

zum Abbruch bestimmt!

geplante Grundstücks-teilung

Bestandsmauer

geplante Grundstücks-teilung

geplante Grundstü neue Grenz

Neubau Carport Haus I

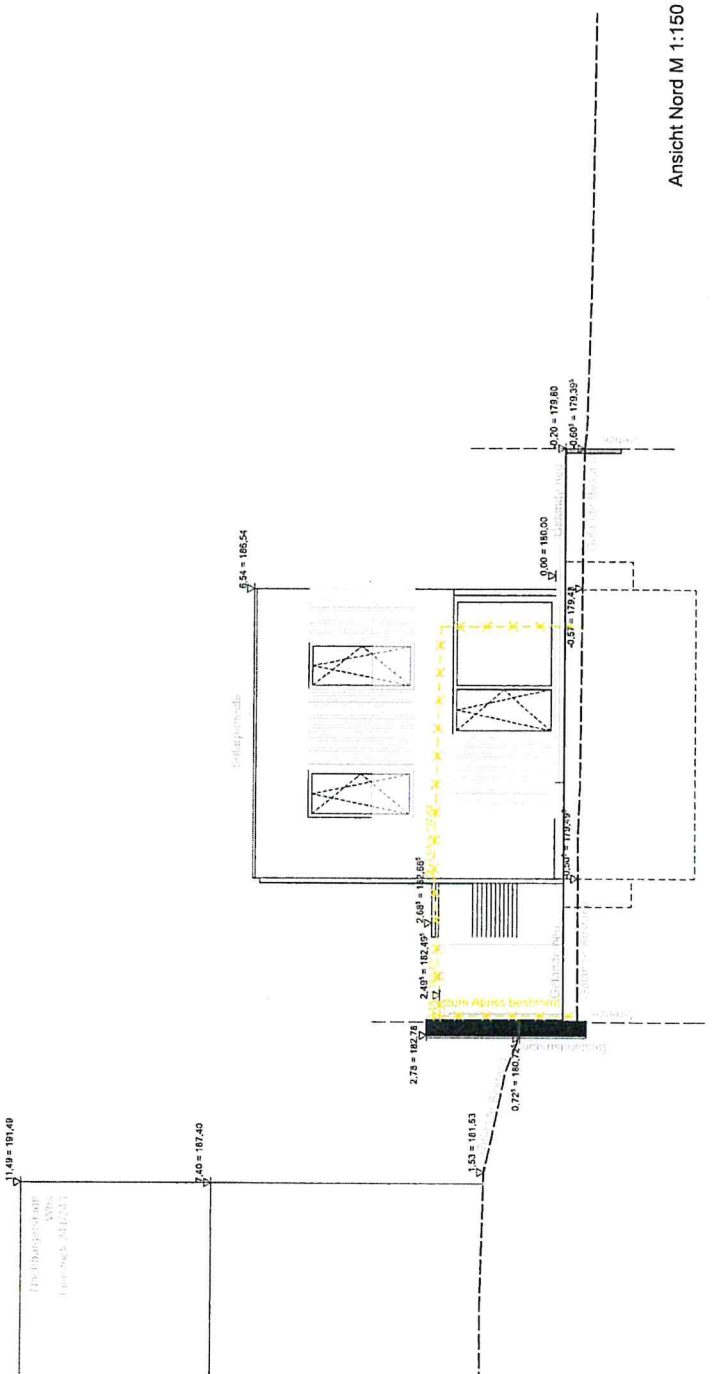
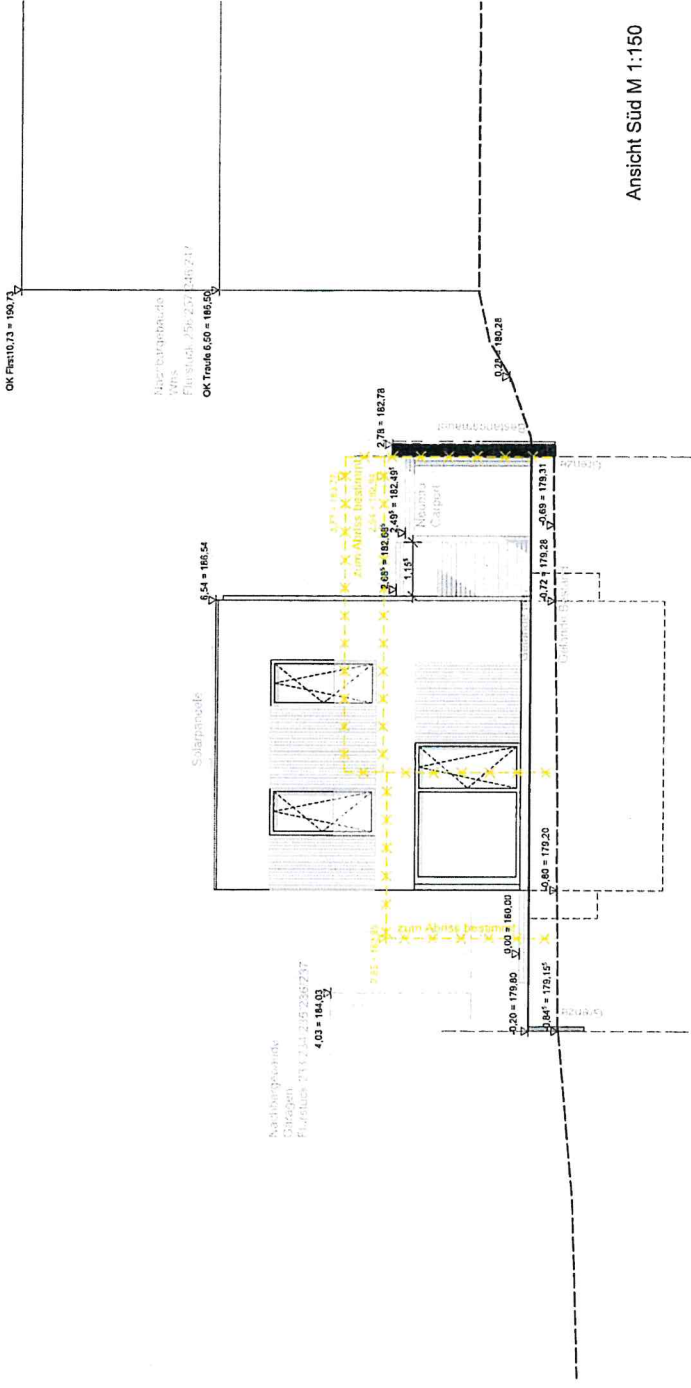
Neubau Carport Haus II

zum Abbruch bestimmt!

24,21

12,10°
 3,74°
 1,41°
 2,26°
 1,14°
 1,01°
 1,36°
 2,00°
 1,01°
 1,14°
 1,41°
 2,26°
 11°
 2,77°
 11°
 3,74°
 11°
 1,01°
 1,11°
 3,58°
 37°
 1,01°
 1,73°
 2,26°

3,74°
 2,26°
 3,74°
 11°
 2,77°
 24°
 12,10°
 1,00°
 1,06°
 1,09°
 2,26°
 1,24°
 2,77°
 11°
 3,75°
 2,02°
 2,01°
 2,26°
 3,58°
 37°
 12,10°
 24,21



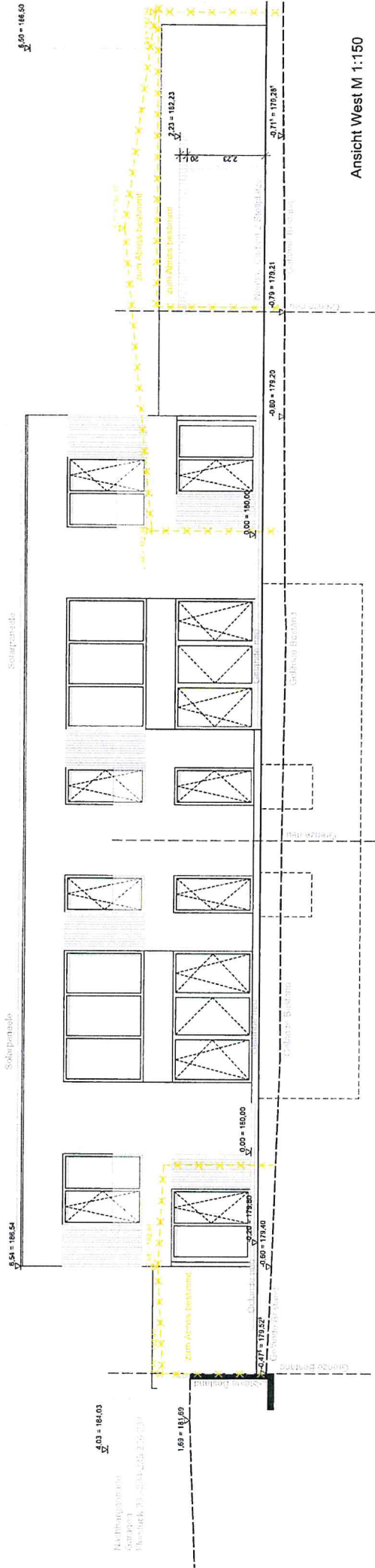
$\sqrt{1.0} = 191.46$

Naturparkstraße
Wohn
Parzelle: 241/243

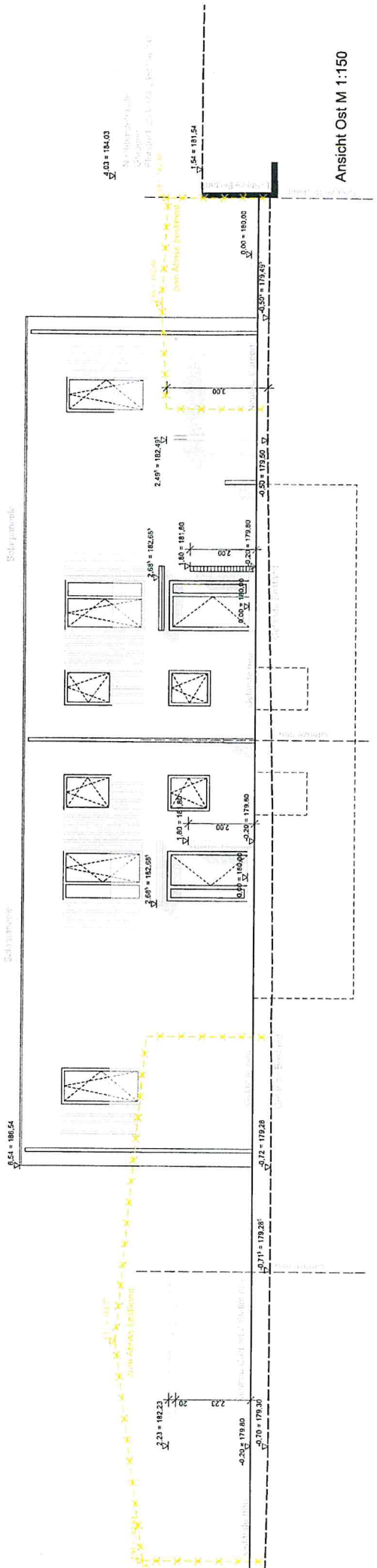
$\sqrt{0.71} = 160.73$

Naturparkstraße
Wohn
Parzelle: 241/243

$\sqrt{1.40} = 187.40$



Ansicht West M 1:150

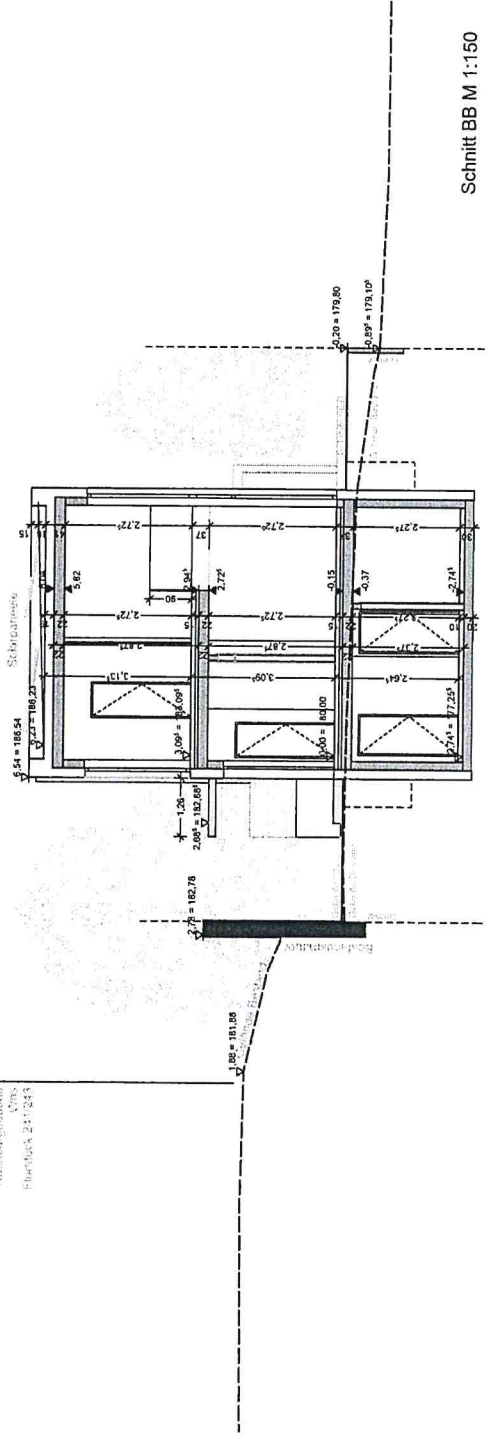


Ansicht Ost M 1:150

11.08 = 191.49

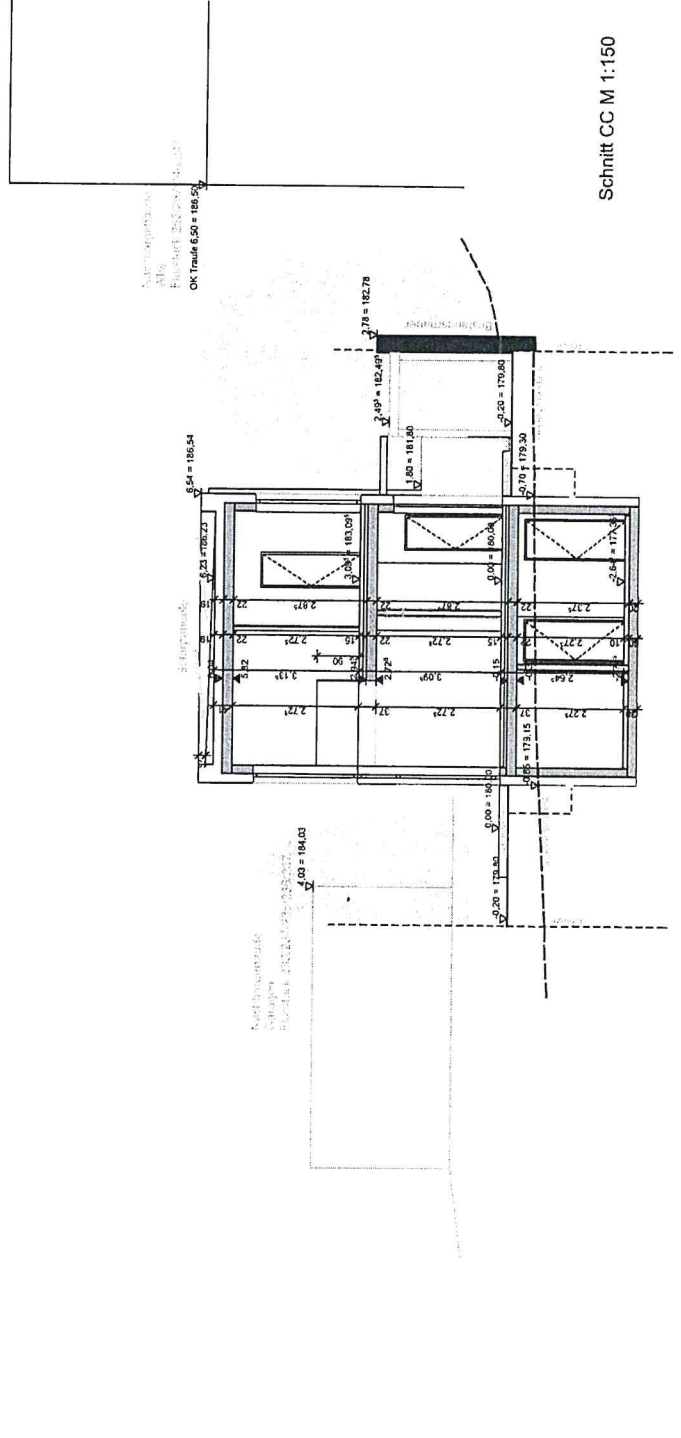
2.40 = 187.40

Nabiměstské
území
Hrušková 23-233

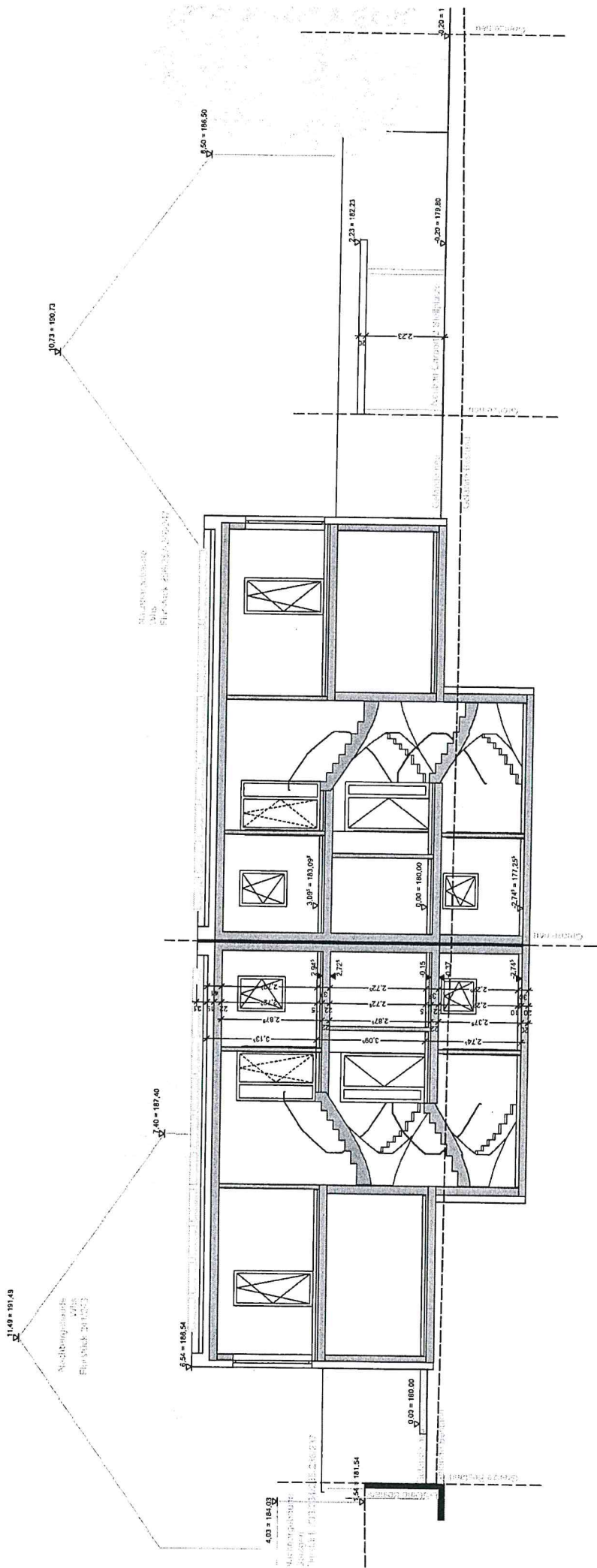


Schnitt BB M 1:150

Nabiměstské
území
Hrušková 23-233
OK Traité 6.50 = 186.50



Schnitt CC M 1:150



Schnitt AA M 1:150