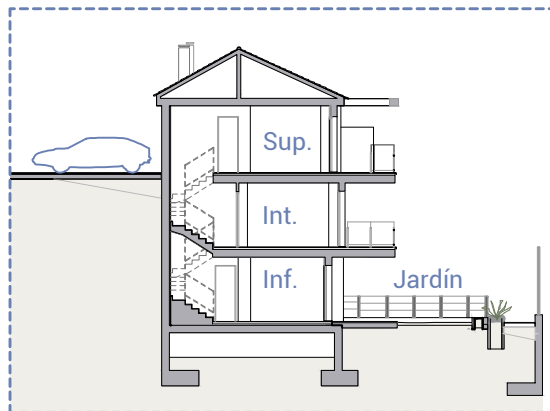


VIVIENDA HOUSE

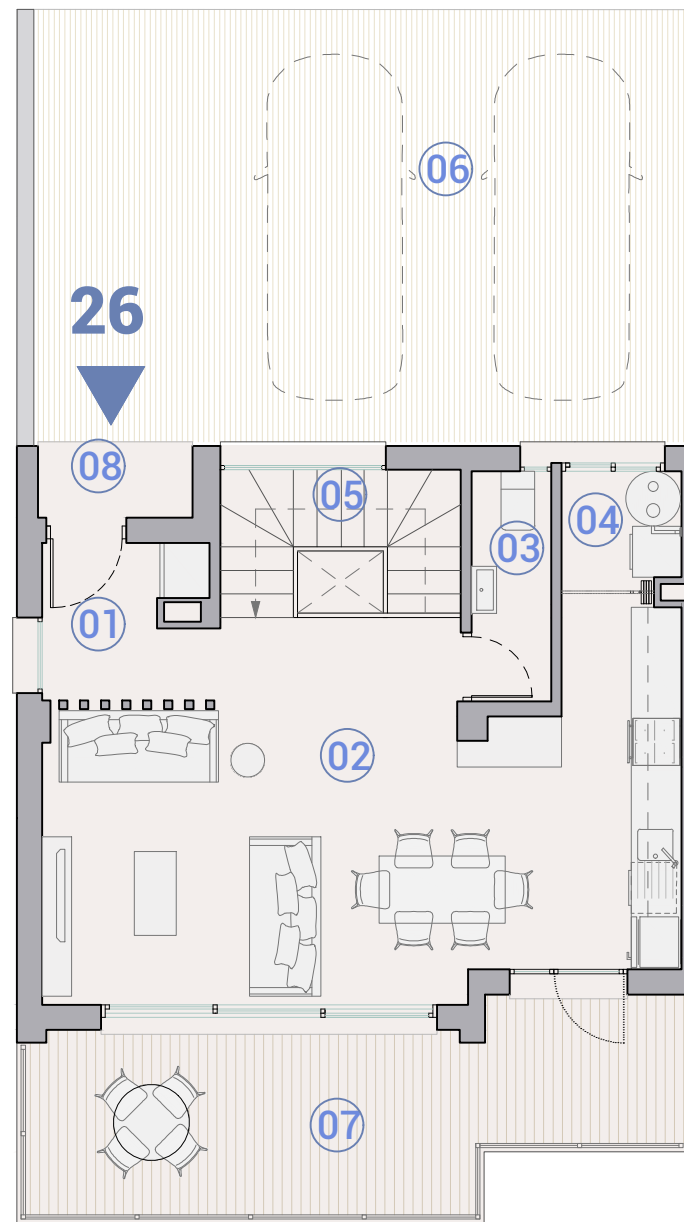
26

Plantas Floors | Superior Intermedia

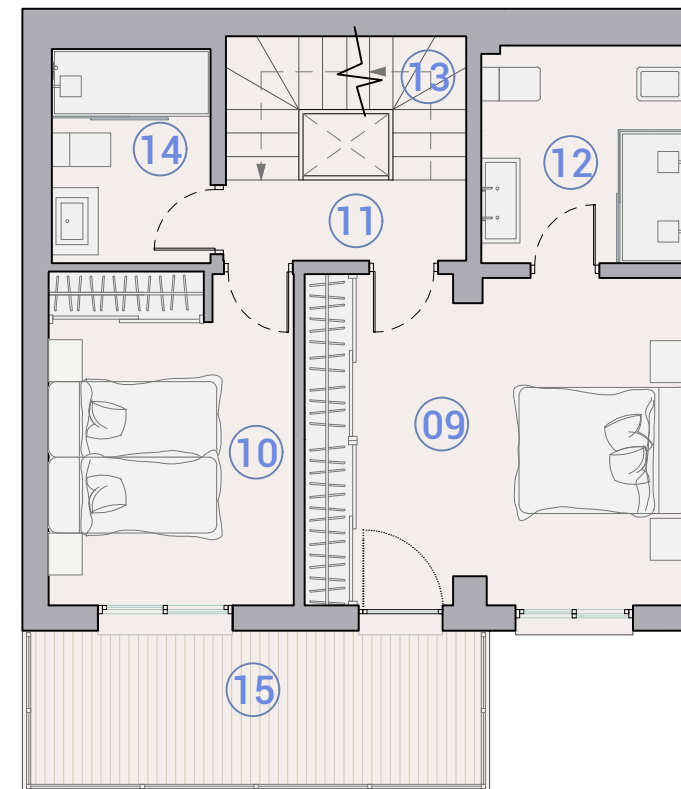
1/2



Sección / Section

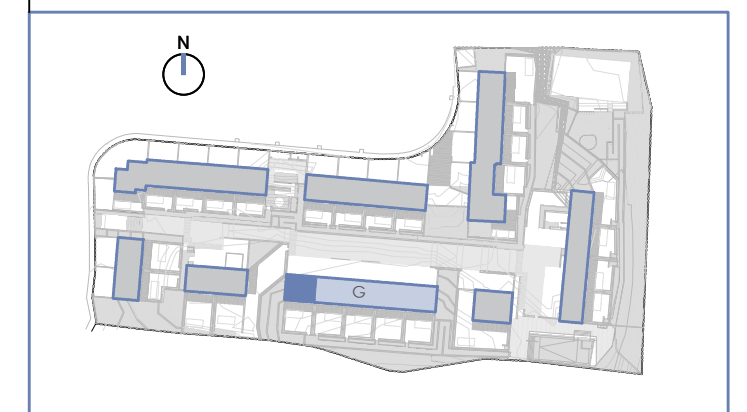


Planta / Floor Superior

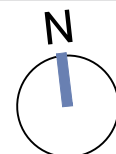


Planta / Floor Intermedia

		sup útil (m2) floor area (m2)	sup const. (m2) built area (m2)
PLANTA / FLOOR SUP.	1. Recibidor / Hall	1,80	
	2. Salón comedor cocina / Living dining kitchen	32,73	
	3. Aseo / Toilet	2,60	
	4. Galería / Gallery	1,80	
	5. Escalera / Stairs	4,23	
	Interior / Indoor	43,16	
	6. Aparcamiento / Parking		40,97
	7. Terraza / Terrace		17,40
8. Acceso / Access		2,34	
	Exterior / Outdoor		60,71
PLANTA / FLOOR INT.	9. Dormitorio 1 / Bedroom 1	17,56	
	10. Dormitorio 2 / Bedroom 2	11,51	
	11. Distribuidor 1 / Hall 1	2,77	
	12. Baño 1 / Bathroom 1	6,32	
	13. Escalera / Stairs	4,08	
	14. Baño 2 / Bathroom 2	4,82	
	Interior / Indoor	47,06	
15. Terraza / Terrace		10,74	
	Exterior / Outdoor		10,74
PLANTA / FLOOR INF.	16. Estancia residencial D3 / Residential room D3	14,54	
	17. Baño 3 / Bathroom 3	4,65	
	18. Estancia residencial D4 / Residential room D4	8,52	
	19. Sala TV / TV room	12,40	
	20. Instalaciones / Facilities	2,49	
	21. Trastero / Storage room	0,76	
	Interior / Indoor	43,36	
22. Jardín solado / Paved garden		20,21	
23. Jardín con césped / Grass garden		50,24	
	Exterior / Outdoor		70,45
SUP. ÚTIL INT. VIV. / FLOOR INT. AREA APARTMENT		133,58	
SUP.CONST.INT.VIV./BUILT INT. AREA APARTMENT			168,95
TOTAL CON EXTERIORES / TOTAL WITH OUTDOORS			310,85
SUPERFICIE DE PARCELA / PLOT AREA			167,48



Escala gráfica



Fecha Edición: **Febrero 2024**

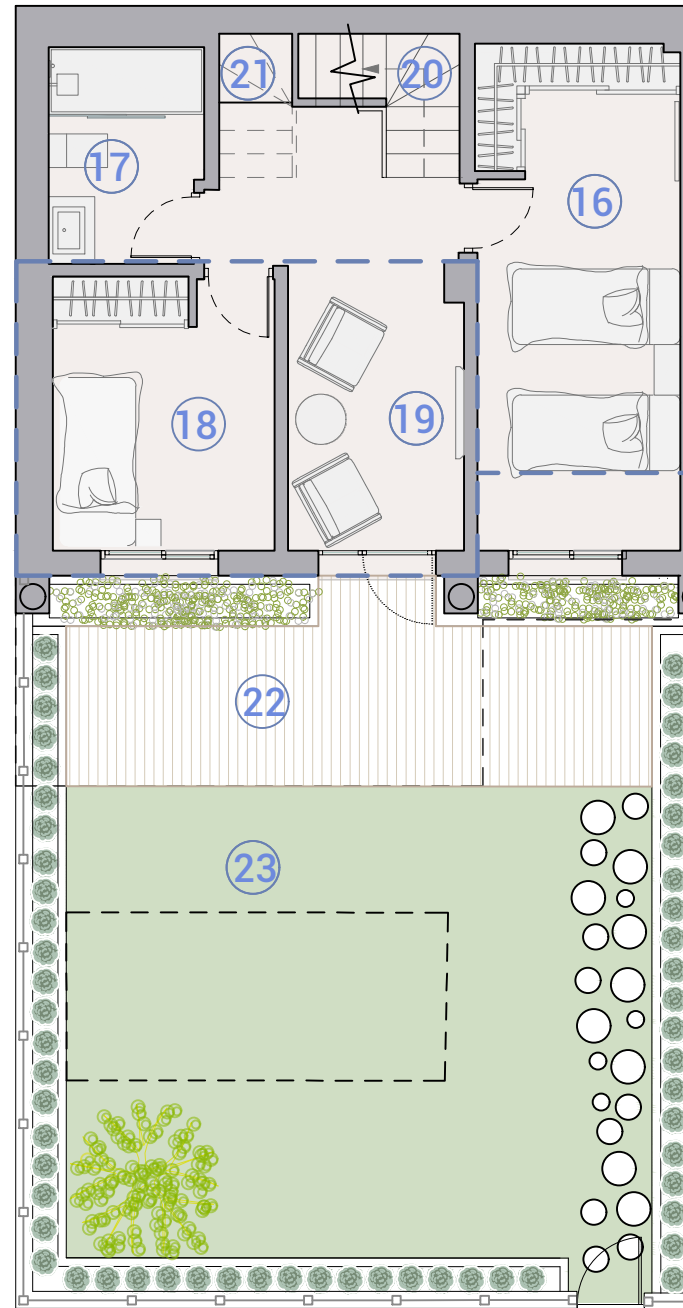
Plano sujeto a posibles modificaciones por razones o exigencias de índole técnica, jurídica o administrativa. Las superficies son aproximadas. Cocina y amueblamiento orientativo, sin valor contractual.
Plans subject to possible modifications for technical, legal or administrative reasons. Measurements shown are approximate. Kitchen and furnishings are for display purposes only, with no contractual value.

VIVIENDA HOUSE

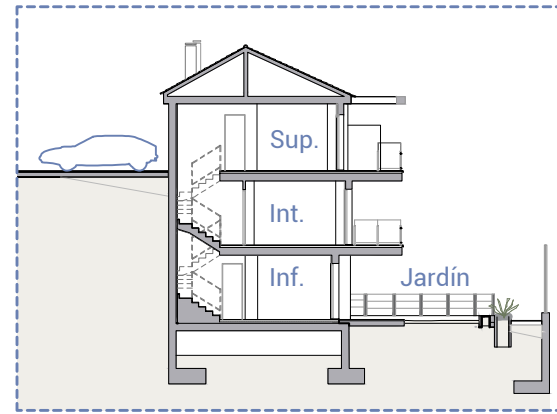
26

Planta Floor | Inferior

2/2

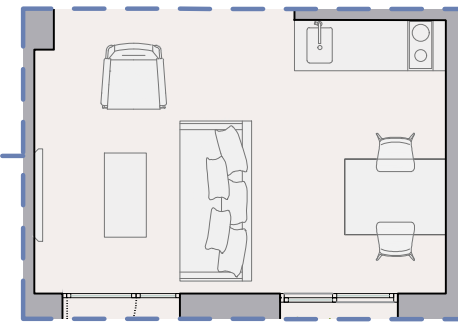


Opción 1: Bedroom + TV room
Planta / Floor Inferior

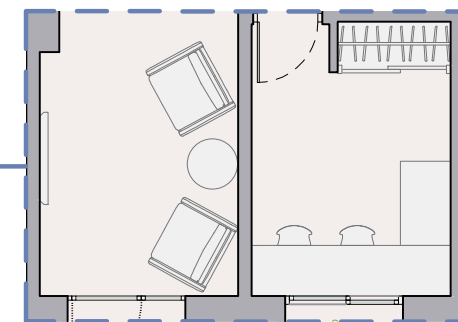


Sección / Section

Opciones distribución
Distribution options

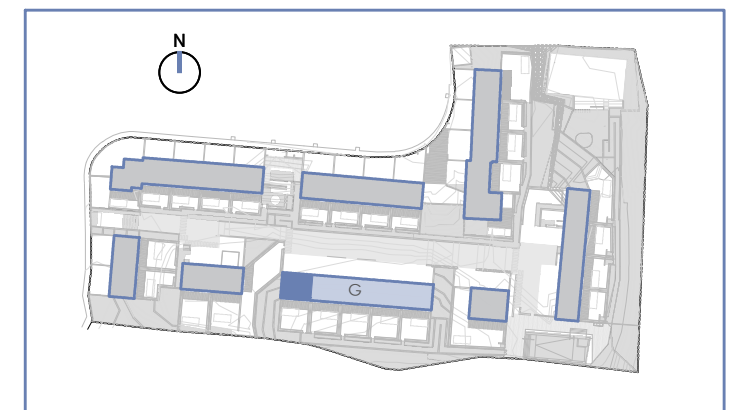


Opción 2: Living + kitchenette
Planta / Floor Inferior

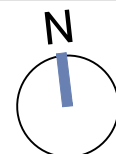


Opción 3: Home office + TV room
Planta / Floor Inferior

	sup útil floor area (m2)	sup const. built area (m2)
PLANTA / FLOOR SUP.	1. Recibidor / Hall	1,80
	2. Salón comedor cocina / Living dining kitchen	32,73
	3. Aseo / Toilet	2,60
	4. Galería / Gallery	1,80
	5. Escalera / Stairs	4,23
	Interior / Indoor	43,16
	6. Aparcamiento / Parking	40,97
	7. Terraza / Terrace	17,40
8. Acceso / Access	2,34	
Exterior / Outdoor	60,71	
PLANTA / FLOOR INT.	9. Dormitorio 1 / Bedroom 1	17,56
	10. Dormitorio 2 / Bedroom 2	11,51
	11. Distribuidor 1 / Hall 1	2,77
	12. Baño 1 / Bathroom 1	6,32
	13. Escalera / Stairs	4,08
	14. Baño 2 / Bathroom 2	4,82
Interior / Indoor	47,06	
15. Terraza / Terrace	10,74	
Exterior / Outdoor	10,74	
PLANTA / FLOOR INF.	16. Estancia residencial D3 / Residential room D3	14,54
	17. Baño 3 / Bathroom 3	4,65
	18. Estancia residencial D4 / Residential room D4	8,52
	19. Sala TV / TV room	12,40
	20. Instalaciones / Facilities	2,49
	21. Trastero / Storage room	0,76
	Interior / Indoor	43,36
22. Jardín solado / Paved garden	20,21	
23. Jardín con césped / Grass garden	50,24	
Exterior / Outdoor	70,45	
SUP. ÚTIL INT. VIV. / FLOOR INT. AREA APARTMENT		133,58
SUP.CONST.INT.VIV./BUILT INT. AREA APARTMENT		168,95
TOTAL CON EXTERIORES / TOTAL WITH OUTDOORS		310,85
SUPERFICIE DE PARCELA / PLOT AREA		167,48



Escala gráfica



Fecha Edición: Febrero 2024

Plano sujeto a posibles modificaciones por razones o exigencias de índole técnica, jurídica o administrativa. Las superficies son aproximadas. Cocina y amueblamiento orientativo, sin valor contractual.
Plans subject to possible modifications for technical, legal or administrative reasons. Measurements shown are approximate. Kitchen and furnishings are for display purposes only, with no contractual value.