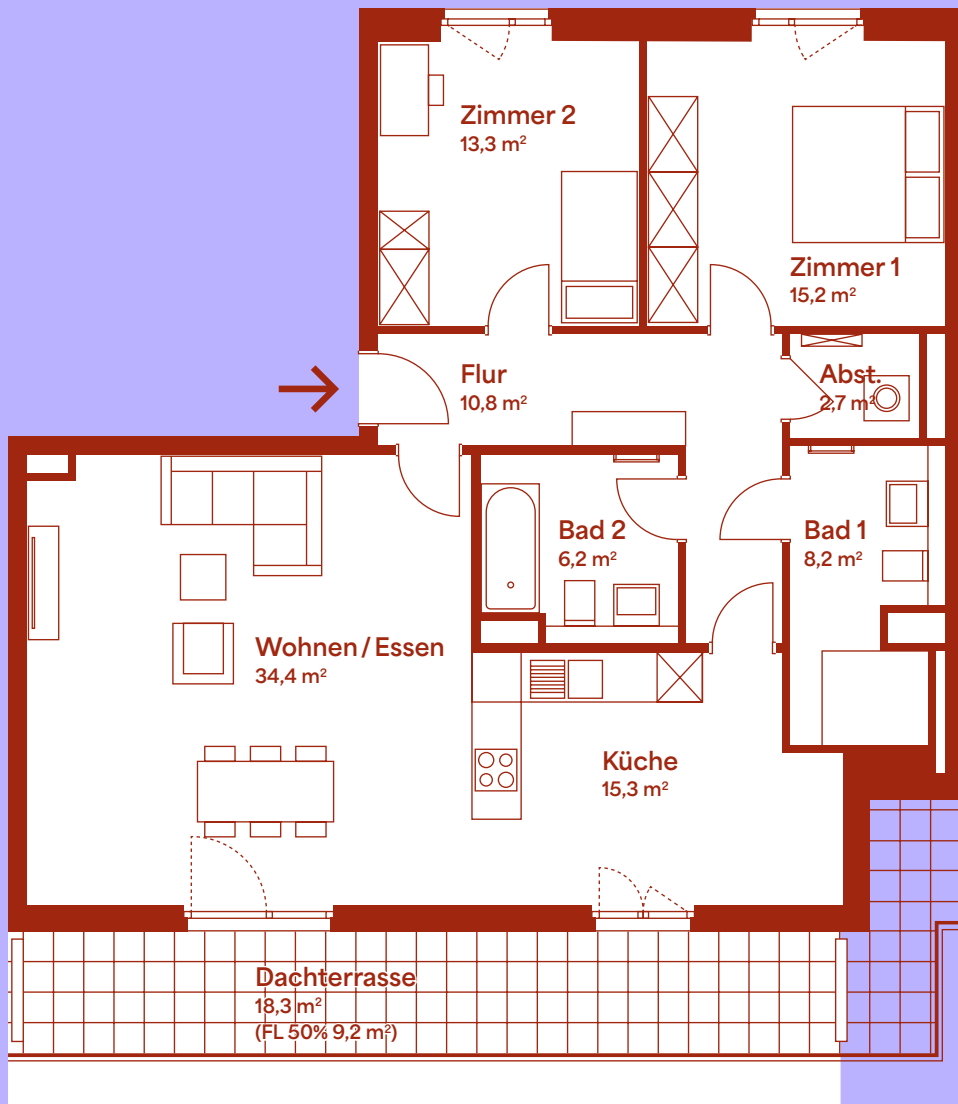


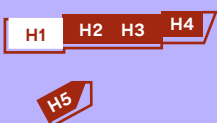
Wohneinheit 17

4. Obergeschoss | Haus 1 | 3 Zimmer

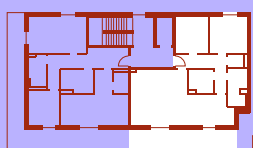
ROTEN BLEICHER



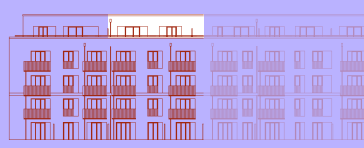
LAGEPLAN



4. OBERGESCHOSS



ANSICHT WEST



Haus 1

Haus 2

Zimmer 1	15,2 m ²
Zimmer 2	13,3 m ²
Abstellraum	2,7 m ²
Flur	10,8 m ²
Bad 1	8,2 m ²
Bad 2	6,2 m ²
Küche	15,3 m ²
Wohnen / Essen	34,4 m ²
Dachterrasse (50%)	9,2 m ²

Grundfläche ca. 115,3 m²