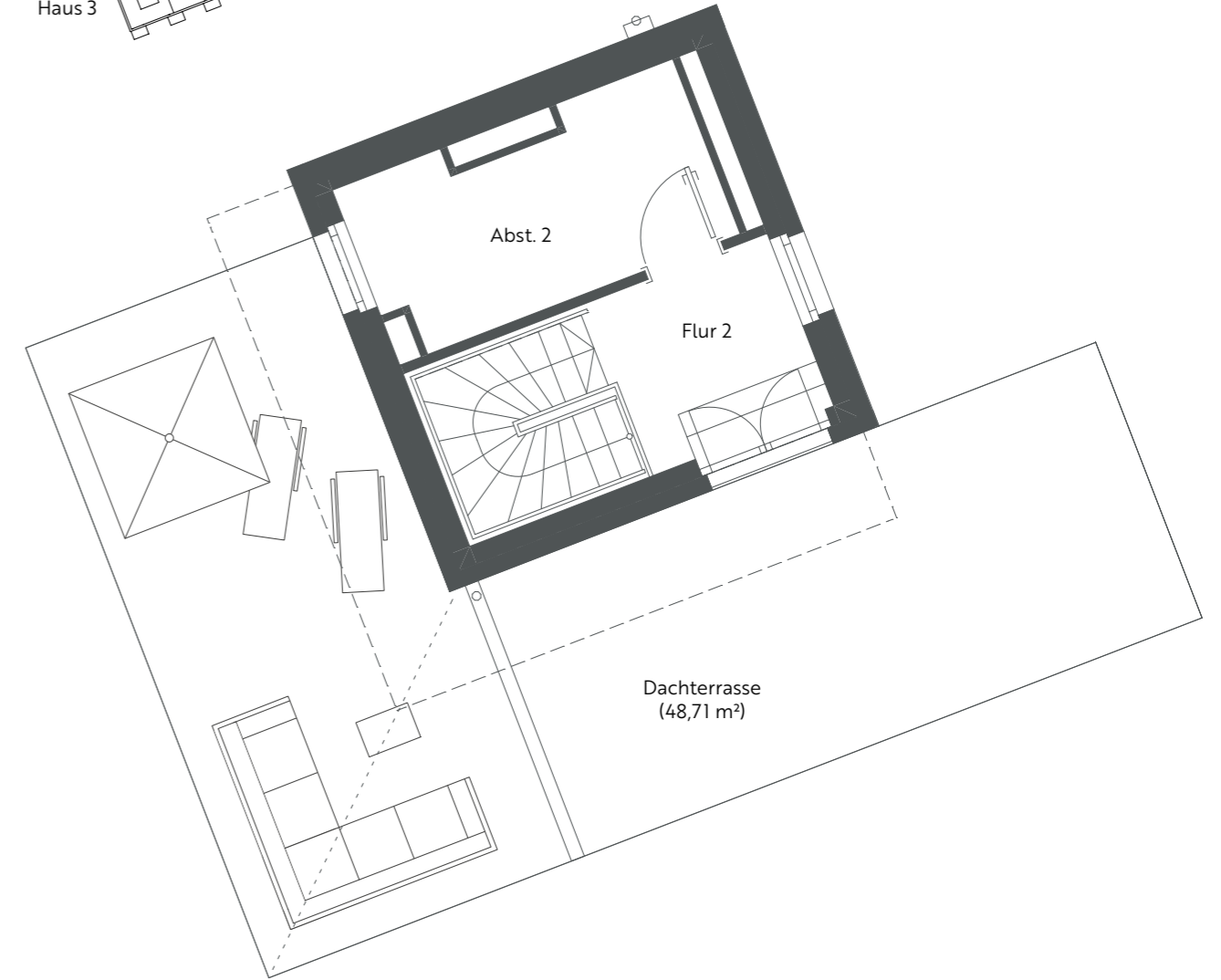
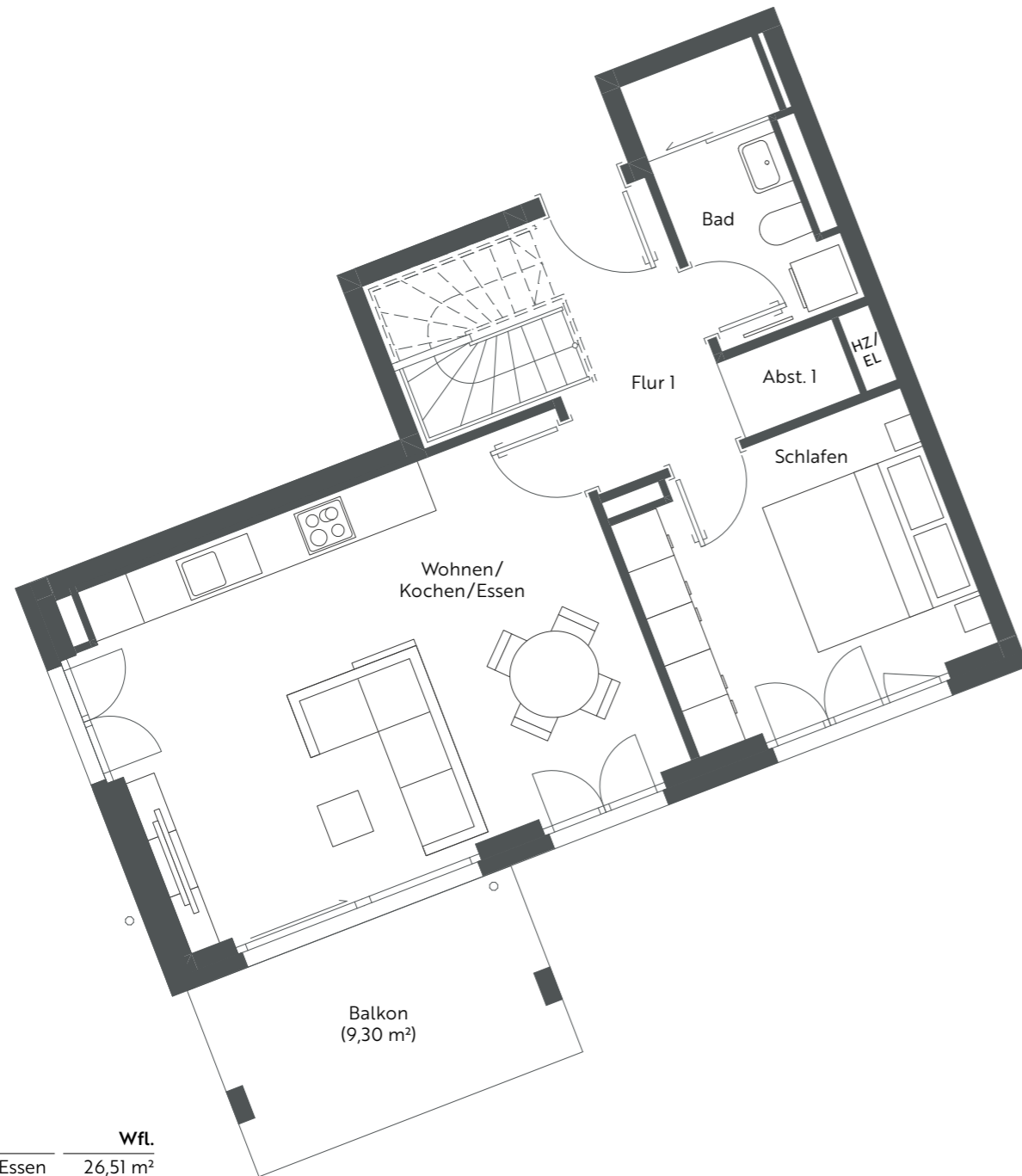
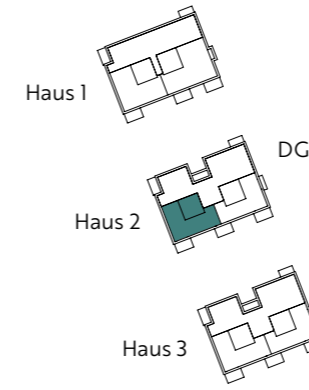
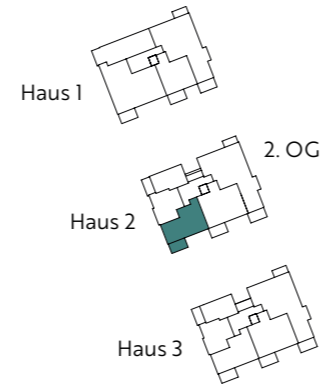


# WOHNUNG 2.2.3

Haus 2 | 2. OG/DG | 2 Zimmer  
87,27 m<sup>2</sup> Wohnfläche | 121,06 m<sup>2</sup> Nutzfläche



| Wohnung 2.2.3       | Wfl.                       |
|---------------------|----------------------------|
| Wohnen/Kochen/Essen | 26,51 m <sup>2</sup>       |
| Schlafen            | 11,36 m <sup>2</sup>       |
| Flur 1              | 6,90 m <sup>2</sup>        |
| Flur 2              | 4,33 m <sup>2</sup>        |
| Bad                 | 5,22 m <sup>2</sup>        |
| Abst. 1             | 1,31 m <sup>2</sup>        |
| Abst. 2             | 7,42 m <sup>2</sup>        |
| Balkon (1/2)        | 4,65 m <sup>2</sup>        |
| Dachterrasse (1/2)  | 10,00 m <sup>2</sup>       |
| Dachterrasse (1/3)  | 9,57 m <sup>2</sup>        |
| <b>Gesamt</b>       | <b>87,27 m<sup>2</sup></b> |

abgehängte Decke  
 Schiebetür  
 HZ/EL = Unterverteilung Heizung/Elektro



Maßstab 1:75 – 1 cm = 0,75 m