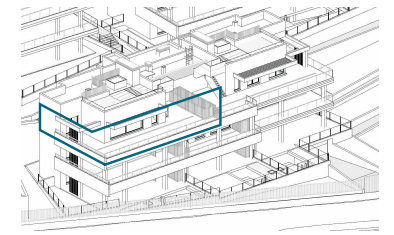
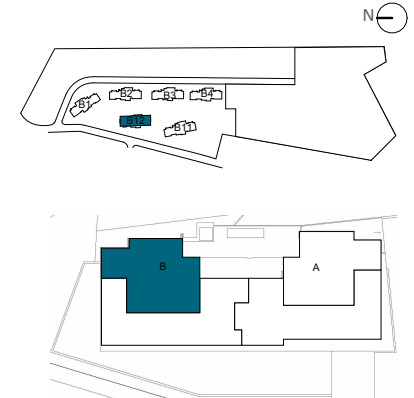


Penthouse 122B

The information contained may be modified during the course of the work execution due to technical or legal requirements, without implying any reduction in the overall level of qualities. The access steps to the dwelling and exits to courtyards may be altered according to the level of the streets and it is up to the D.F. to set the criteria.
 The pool represented in the commercial plan of the solarium floor, and infographics, is not included in the project, nor in the sale price. It is an option for buyers, the cost of which will be added to the purchase price.



LOCATION



BLOCK 12

APPROXIMATE AREAS

Entrance	4,34 m ²
Living room - Kitchen	38,83 m ²
Hall	2,11 m ²
Master bedroom	16,27 m ²
Master bathroom	6,53 m ²
Bedroom 2	11,74 m ²
Bathroom 2	4,62 m ²
INTERNAL USEFUL FLOOR AREA	84,44 m²

INTERNAL BUILT AREA	100,80 m²
P.P. COMMON AREAS	33,75 m²
INTERNAL BUILT AREA INCLUDING PP. COMMON AREAS	134,55 m²

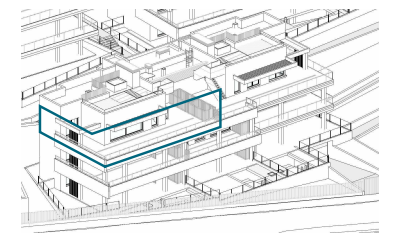
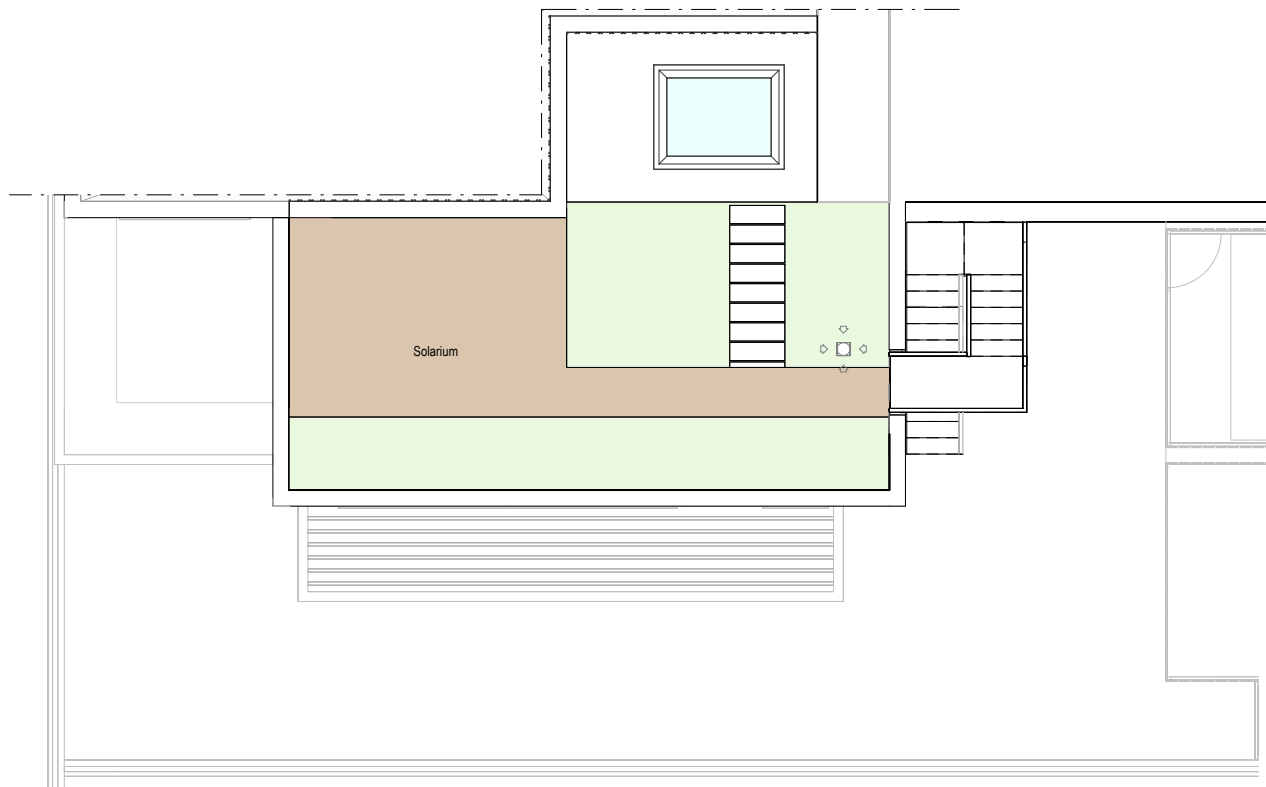
EXTERNAL AREAS	
Uncovered laundry room	5,01 m ²
Terrace pergola	17,38 m ²
Uncovered terrace	81,54 m ²
EXTERNAL USEFUL FLOOR AREA	103,93 m²

USEFUL FLOOR AREA SOLARIUM	49,60 m²
-----------------------------------	----------------------------

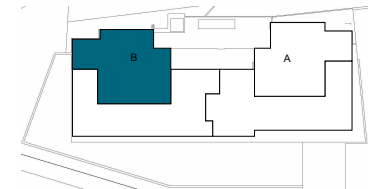
REGARDING DECRETO BOJA 218/2005	
TOTAL USEFUL FLOOR AREA	92,88 m²
TOTAL BUILT AREA	142,99 m²

Penthouse 122B

The information contained may be modified during the course of the work execution due to technical or legal requirements, without implying any reduction in the overall level of qualities. The access steps to the dwelling and exits to courtyards may be altered according to the level of the streets and it is up to the D.F. to set the criteria.
 The pool represented in the commercial plan of the solarium floor, and infographics, is not included in the project, nor in the sale price. It is an option for buyers, the cost of which will be added to the purchase price.



LOCATION



BLOCK 12

APPROXIMATE AREAS

Entrance	4,34 m ²
Living room - Kitchen	38,83 m ²
Hall	2,11 m ²
Master bedroom	16,27 m ²
Master bathroom	6,53 m ²
Bedroom 2	11,74 m ²
Bathroom 2	4,62 m ²
INTERNAL USEFUL FLOOR AREA	84,44 m²

INTERNAL BUILT AREA	100,80 m²
P.P. COMMON AREAS	33,75 m²
INTERNAL BUILT AREA INCLUDING PP. COMMON AREAS	134,55 m²

EXTERNAL AREAS	
Uncovered laundry room	5,01 m ²
Terrace pergola	17,38 m ²
Uncovered terrace	81,54 m ²
EXTERNAL USEFUL FLOOR AREA	103,93 m²

USEFUL FLOOR AREA SOLARIUM	49,60 m²
-----------------------------------	----------------------------

REGARDING DECRETO BOJA 218/2005	
TOTAL USEFUL FLOOR AREA	92,88 m ²
TOTAL BUILT AREA	142,99 m ²