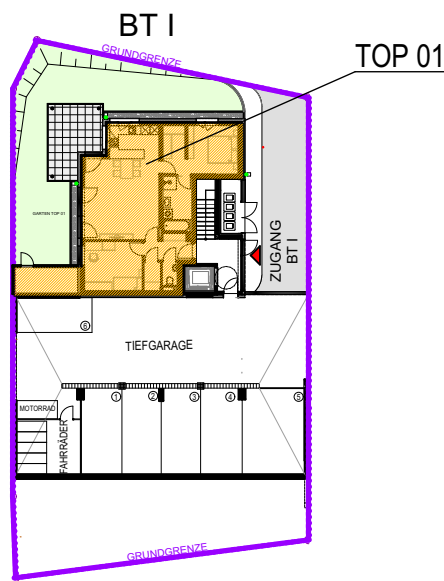


WOHNBEBAUUNG SCHULERTAL 1A  
 BAUTEIL I  
 GARTENGESCHOSS TOP 01  
 GRUNDRISS M = 1:100



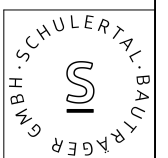
ÜBERSICHT LAGEPLAN 1:500



**GARTENGESCHOSS TOP 01**

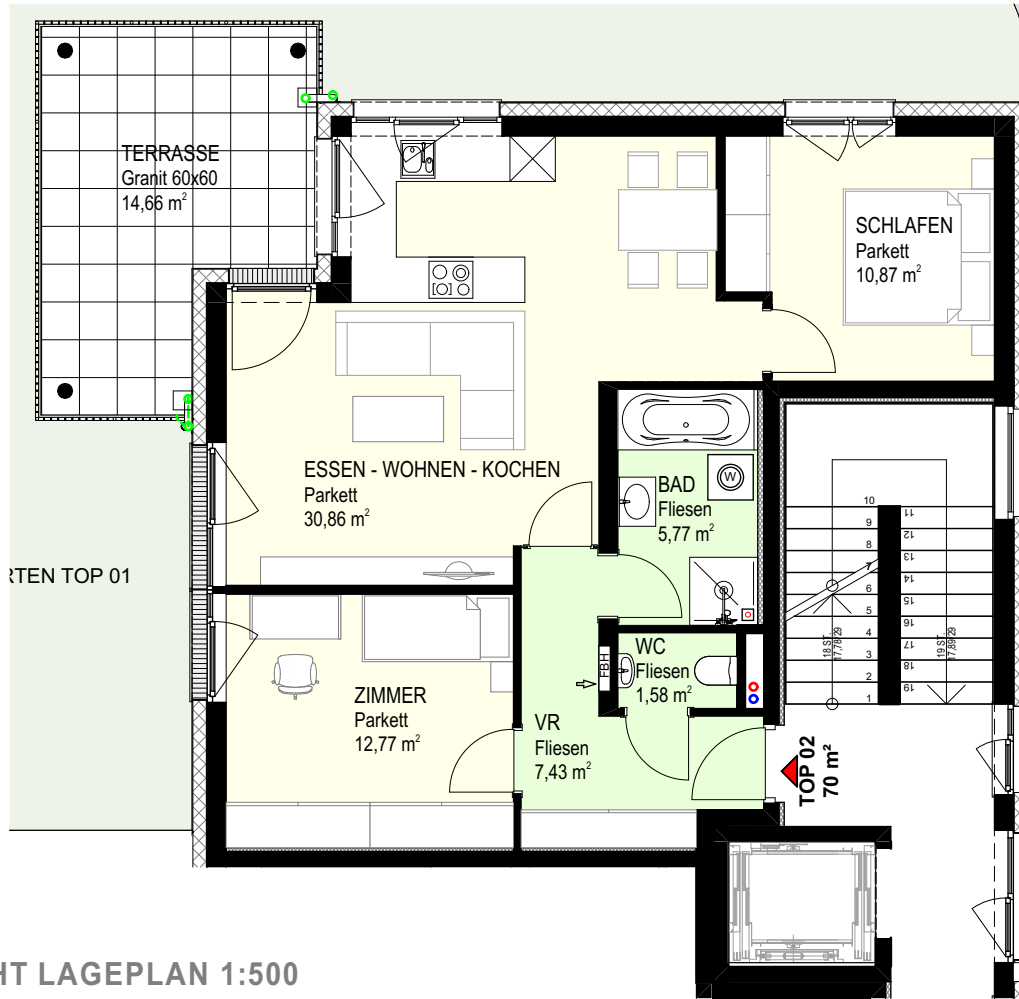
|               |                       |
|---------------|-----------------------|
| WOHNFLÄCHE:   | ca. 78 m <sup>2</sup> |
| TERRASSE:     | ca. 15 m <sup>2</sup> |
| EIGENGARTEN:  | ca. 86 m <sup>2</sup> |
| GARTENGERÄTE: | ca. 7 m <sup>2</sup>  |

ÄNDERUNGEN VORBEHALTEN  
 STAND: 24. 08. 2022

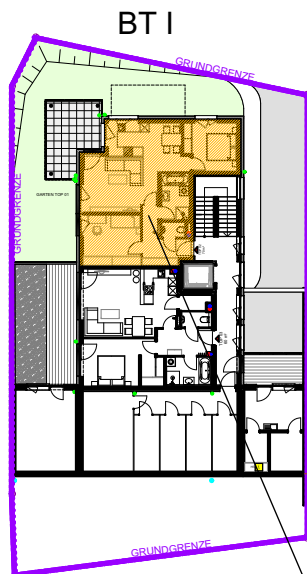


WOHNBEBAUUNG SCHULERTAL 1A  
 BAUTEIL I  
 ERDGESCHOSS  
 GRUNDRISS M = 1:100

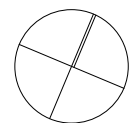
TOP 02



ÜBERSICHT LAGEPLAN 1:500



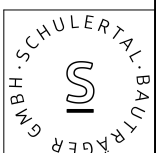
TOP 02



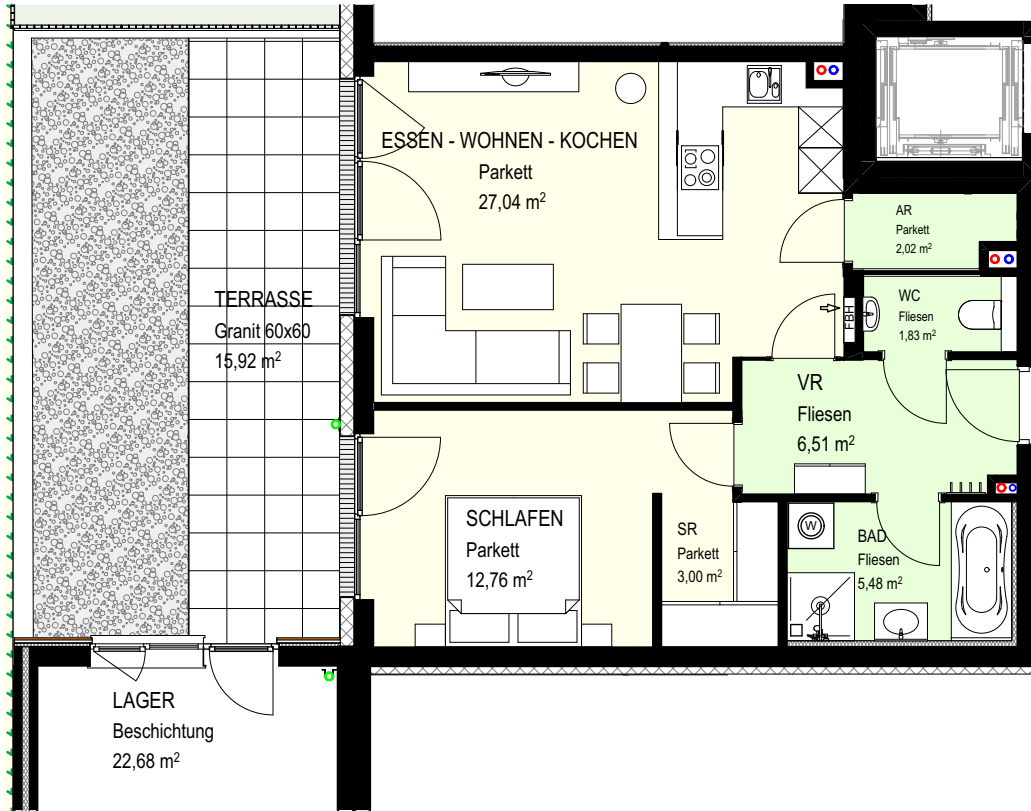
ERDGESCHOSS TOP 02

WOHNFLÄCHE: ca. 70 m<sup>2</sup>  
 TERRASSE: ca. 15 m<sup>2</sup>

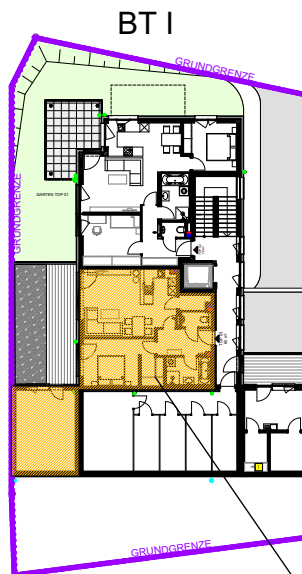
ÄNDERUNGEN VORBEHALTEN  
 STAND: 19. 07. 2022



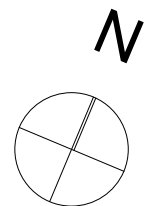
**WOHNBEBAUUNG SCHULERTAL 1A**  
**BAUTEIL I**  
**ERDGESCHOSS**      **TOP 03**  
 GRUNDRISS M = 1:100



**ÜBERSICHT LAGEPLAN 1:500**



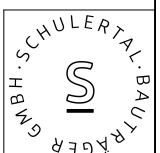
TOP 03



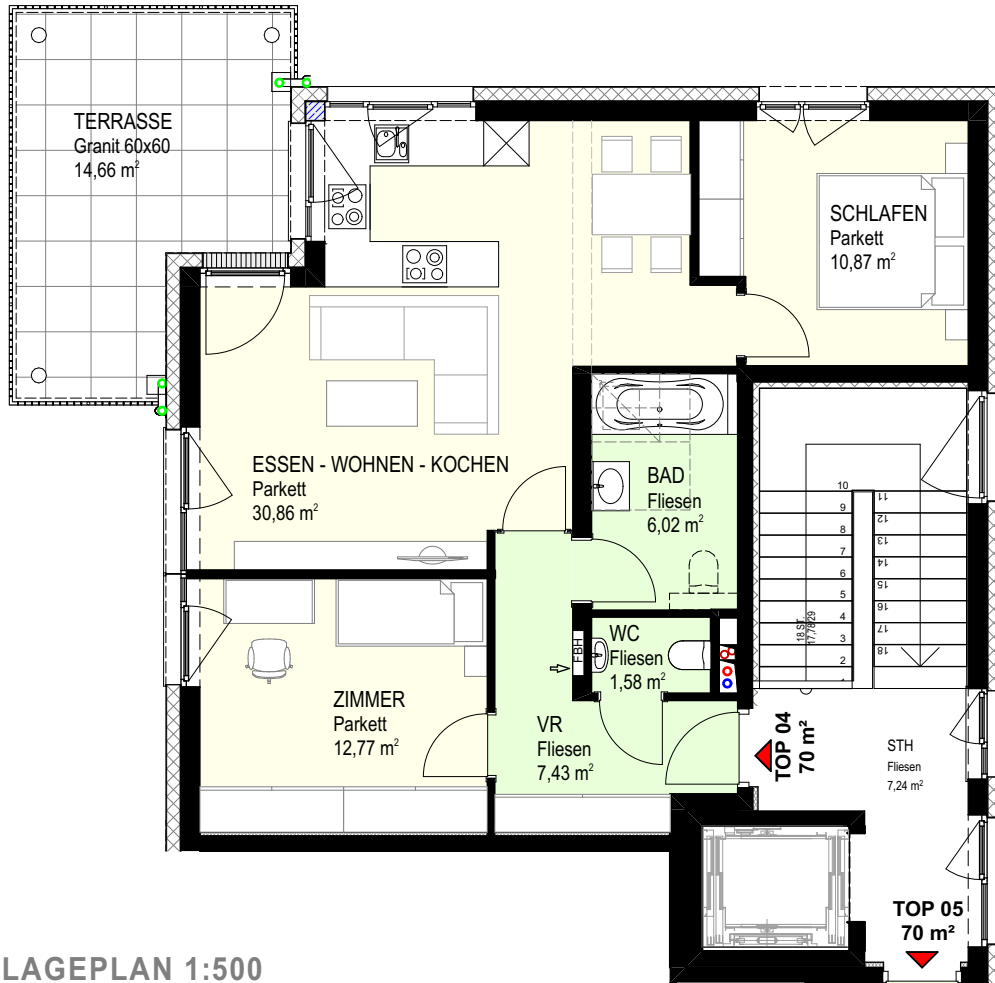
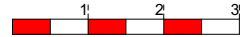
**ERDGESCHOSS TOP 03**

|             |                       |
|-------------|-----------------------|
| WOHNFLÄCHE: | ca. 59 m <sup>2</sup> |
| TERRASSE:   | ca. 16 m <sup>2</sup> |
| LAGERRAUM:  | ca. 23 m <sup>2</sup> |

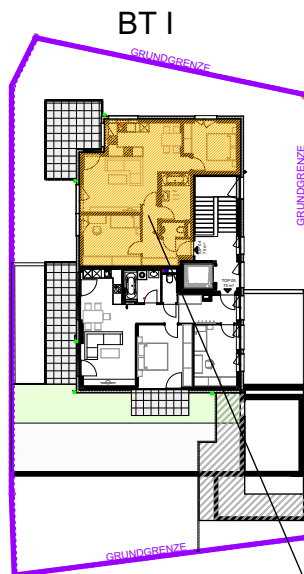
**ÄNDERUNGEN VORBEHALTEN**  
 STAND: 19. 07. 2022



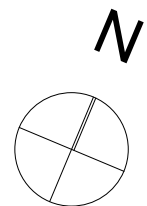
**WOHNBEBAUUNG SCHULERTAL 1A**  
**BAUTEIL I**  
**OBERGESCHOSS**      **TOP 04**  
 GRUNDRISS M = 1:100



ÜBERSICHT LAGEPLAN 1:500



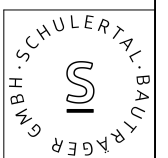
TOP 04



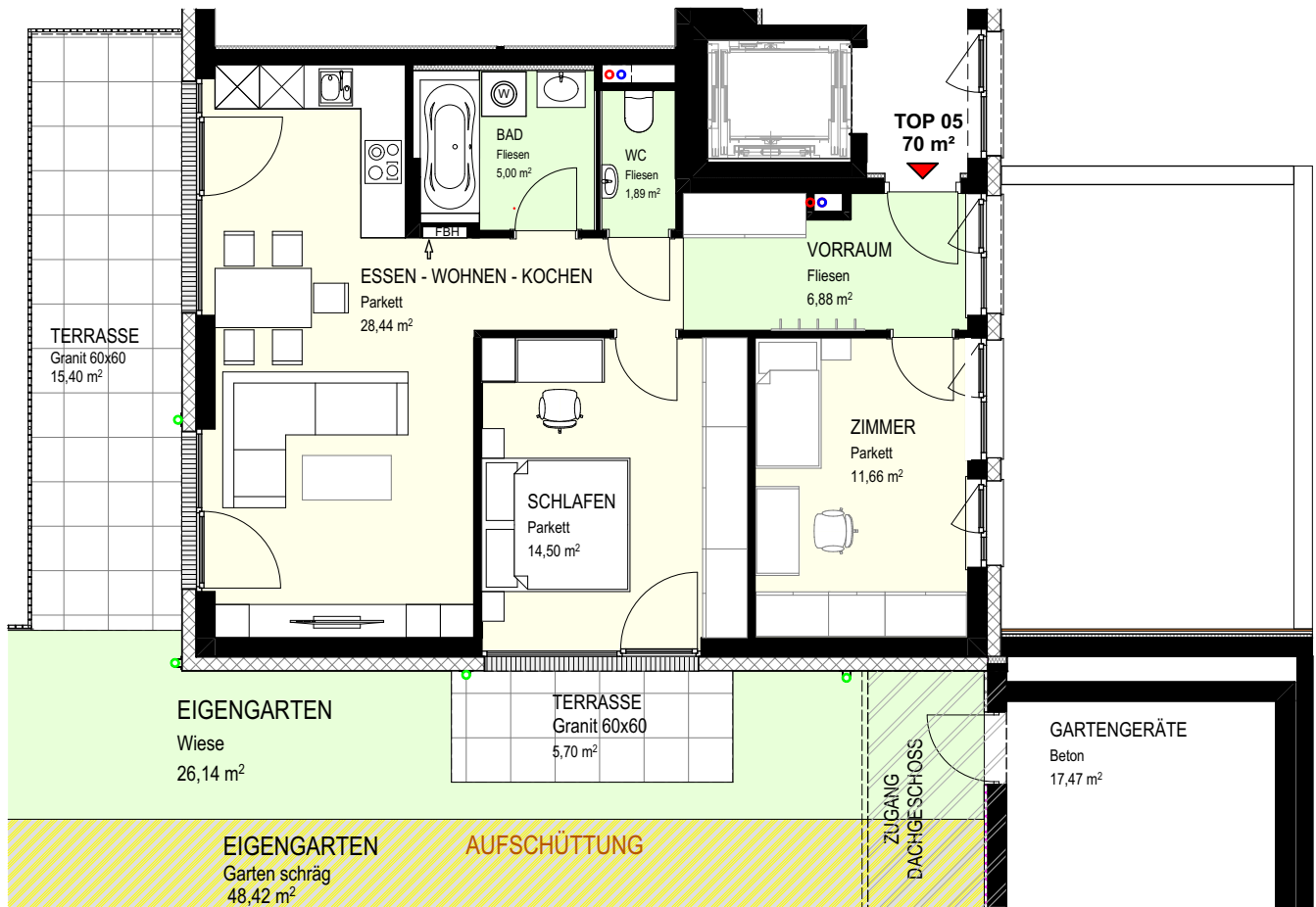
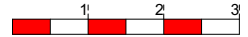
**OBERGESCHOSS TOP 04**

WOHNFLÄCHE: ca. 70 m<sup>2</sup>  
 TERRASSE: ca. 15 m<sup>2</sup>

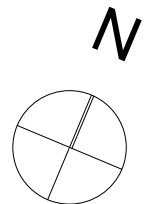
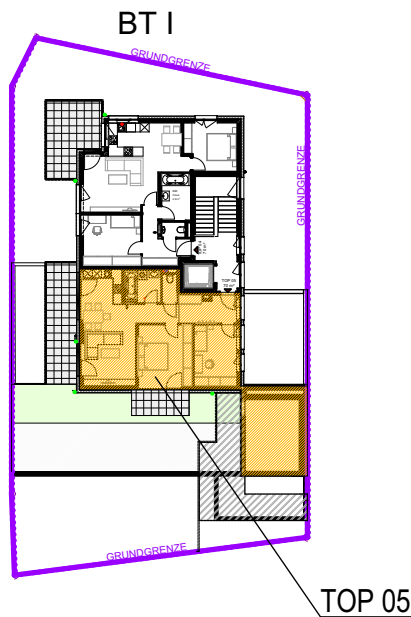
ÄNDERUNGEN VORBEHALTEN  
 STAND: 01. 09. 2022



**WOHNBEBAUUNG SCHULERTAL 1A**  
**BAUTEIL I**  
**OBERGESCHOSS**      **TOP 05**  
 GRUNDRISS M = 1:100



**ÜBERSICHT LAGEPLAN 1:500**



**OBERGESCHOSS TOP 05**

|                |                       |
|----------------|-----------------------|
| WOHNFLÄCHE:    | ca. 68 m <sup>2</sup> |
| TERRASSE:      | ca. 21 m <sup>2</sup> |
| GARTENGERÄTE:  | ca. 17 m <sup>2</sup> |
| EIGENGARTEN:   | ca. 26 m <sup>2</sup> |
| GARTEN SCHRÄG: | ca. 48 m <sup>2</sup> |

**ÄNDERUNGEN VORBEHALTEN**  
 STAND: 01. 09. 2022

