

### -Flächenaufstellung-

Raum	Fläche	Teiler	Wohnflächen
------	--------	--------	-------------

Wohnfläche

EG

Wohnen/Essen	32,73 m <sup>2</sup>	1	32,73 m <sup>2</sup>
Diele	4,61 m <sup>2</sup>	1	4,61 m <sup>2</sup>
Küche	8,10 m <sup>2</sup>	1	8,10 m <sup>2</sup>
WC	2,47 m <sup>2</sup>	1	2,47 m <sup>2</sup>
Terrasse	10,00 m <sup>2</sup>	2	5,00 m <sup>2</sup>

OG

Bad	6,80 m <sup>2</sup>	1	6,80 m <sup>2</sup>
Flur OG	2,94 m <sup>2</sup>	1	2,94 m <sup>2</sup>
Kind 2	10,44 m <sup>2</sup>	1	10,44 m <sup>2</sup>
Kind 1	11,53 m <sup>2</sup>	1	11,53 m <sup>2</sup>
Eltern	15,83 m <sup>2</sup>	1	15,83 m <sup>2</sup>

DG

Dachstudio DG	27,07 m <sup>2</sup>	1	27,07 m <sup>2</sup>
Flur DG	0,76 m <sup>2</sup>	1	0,76 m <sup>2</sup>

Wohnfläche 128,28 m<sup>2</sup>

### -Flächenaufstellung-

Raum	Fläche	Teiler	Wohnflächen
------	--------	--------	-------------

Nutzfläche

UG

FlurUG	2,51 m <sup>2</sup>	1	2,51 m <sup>2</sup>
Keller	43,36 m <sup>2</sup>	1	43,36 m <sup>2</sup>

Nutzfläche 45,87 m<sup>2</sup>

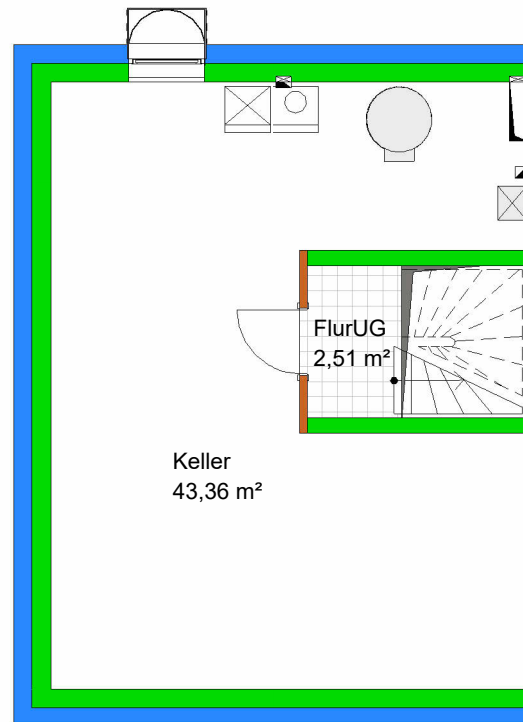
### Kubaturberechnung (-Brutto-)

Name	Fläche	Höhe	Kubikmeter
------	--------	------	------------

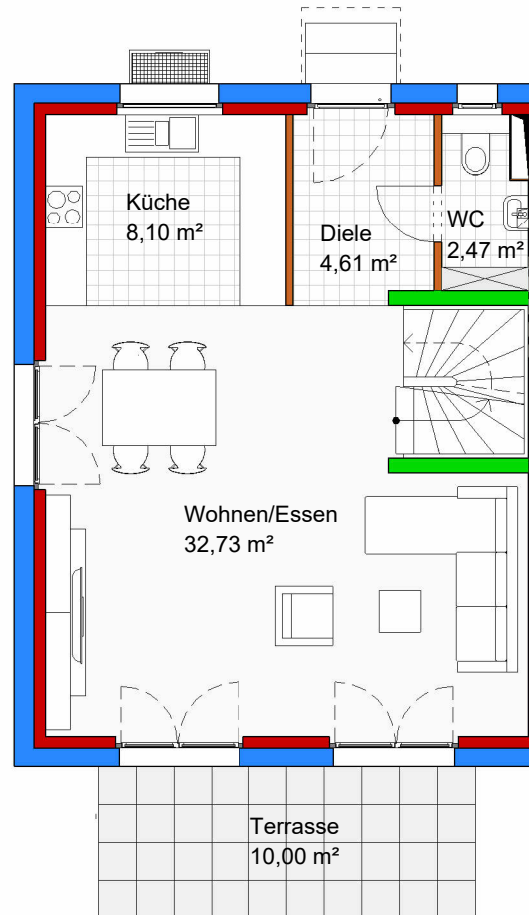
DG	20,29 m <sup>2</sup>	6,9800	141,62 m <sup>3</sup>
EG	62,99 m <sup>2</sup>	3,1300	197,16 m <sup>3</sup>
UG	62,53 m <sup>2</sup>	2,7400	171,33 m <sup>3</sup>
OG	62,99 m <sup>2</sup>	2,7400	172,59 m <sup>3</sup>

Umbauter Raum gesamt 682,70 m<sup>3</sup>

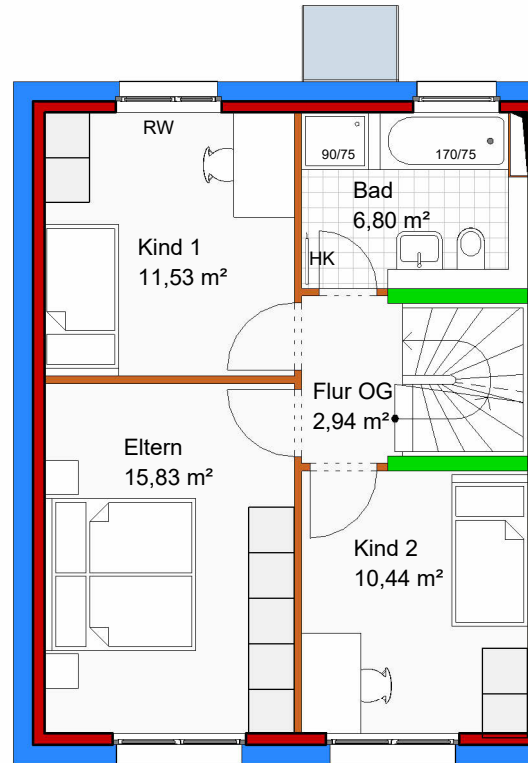
UG



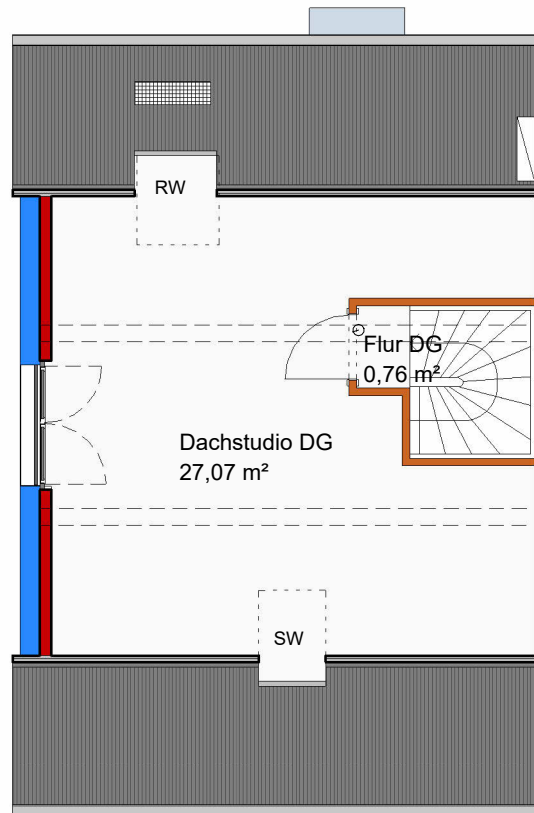
EG

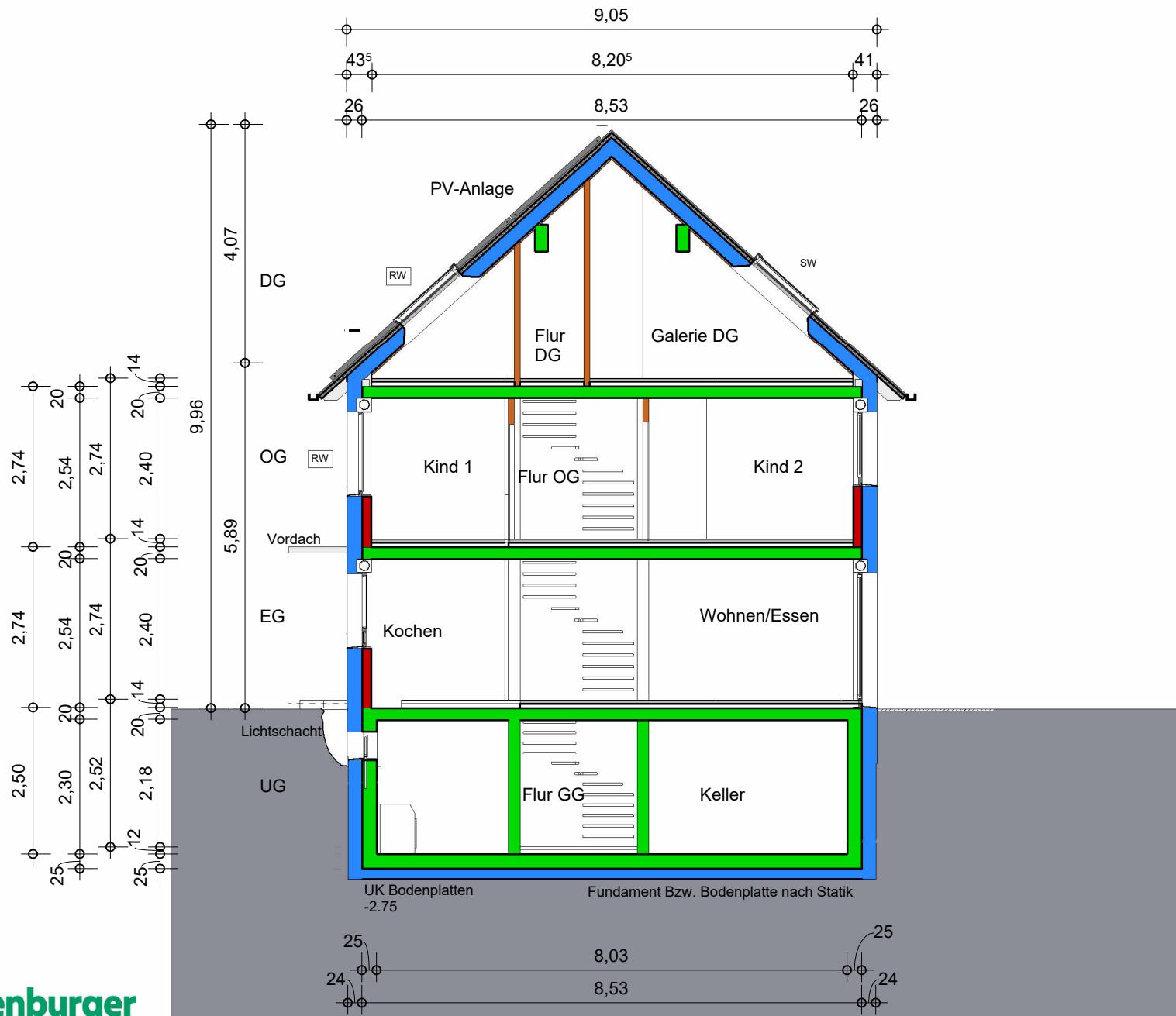


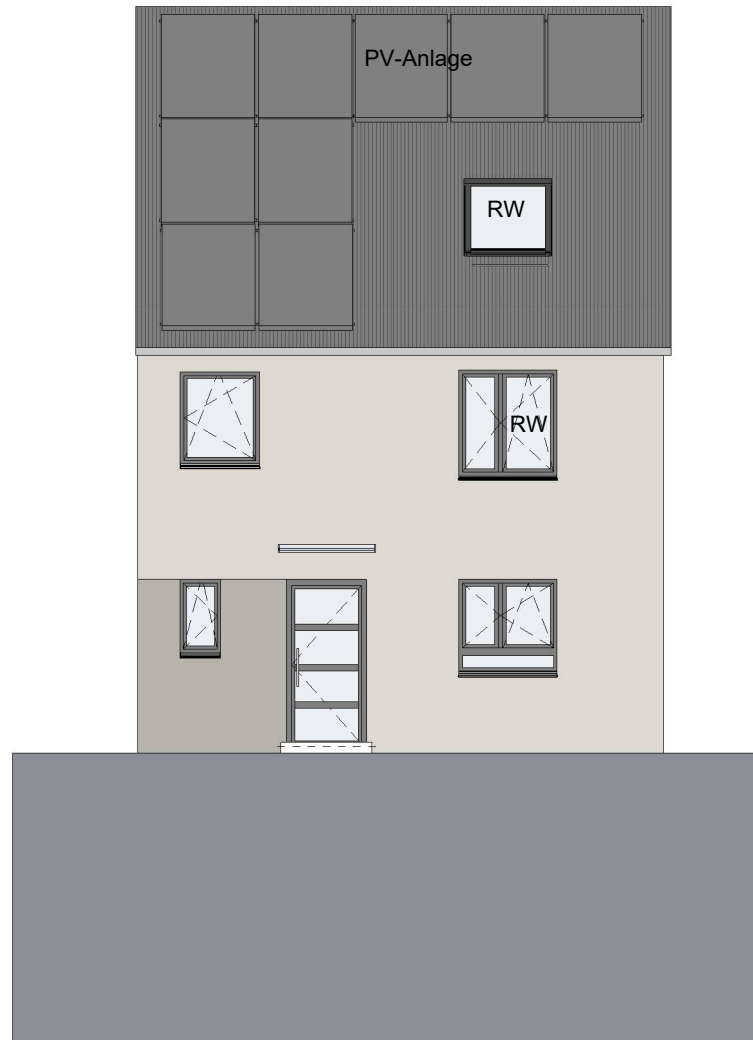
OG



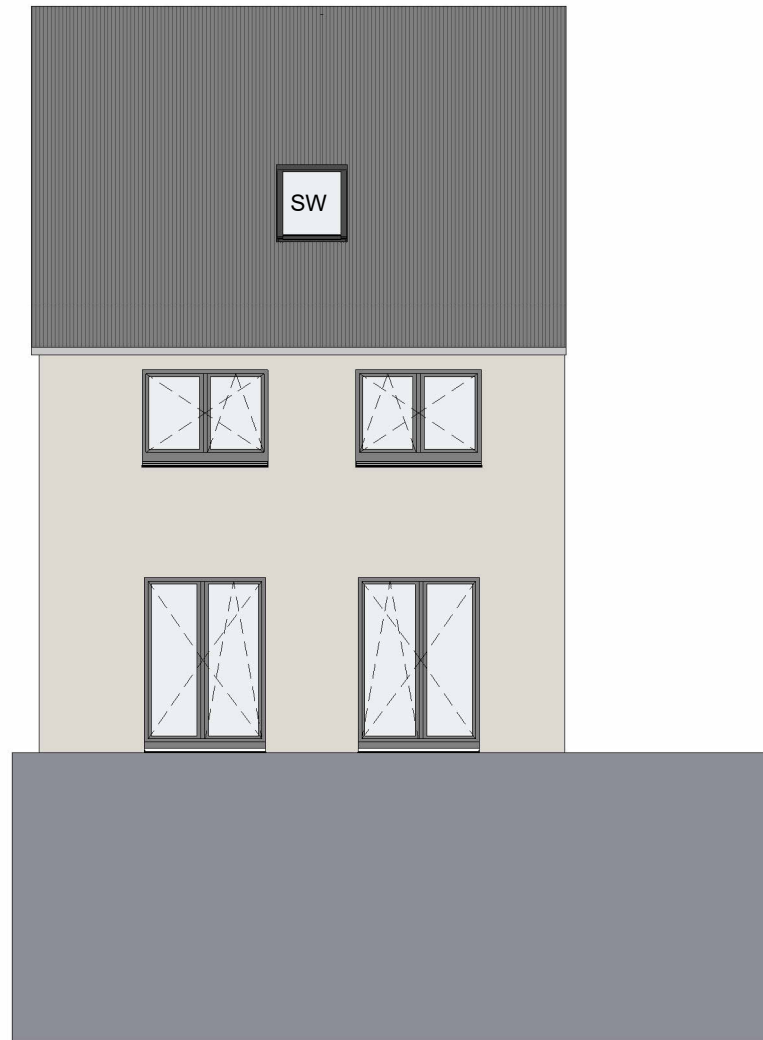
DG







Ansicht Eingang



Ansicht Garten





Ansicht Giebel

