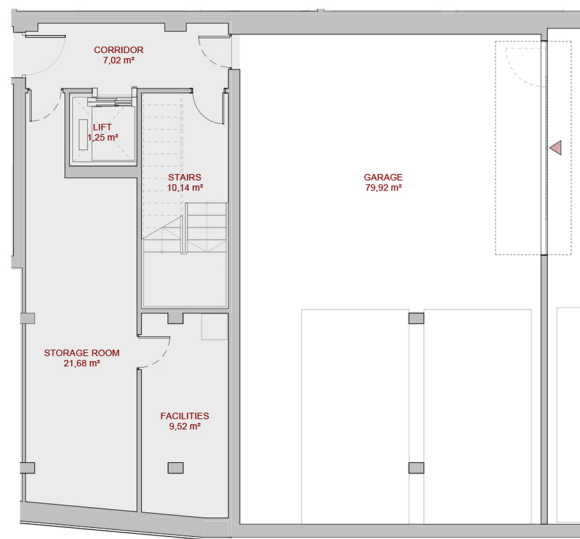


GROUND FLOOR



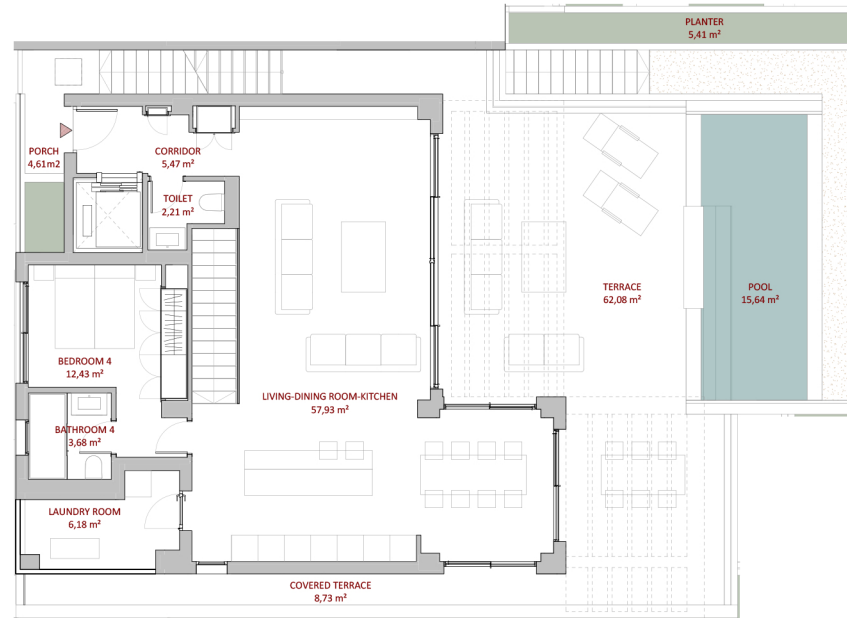
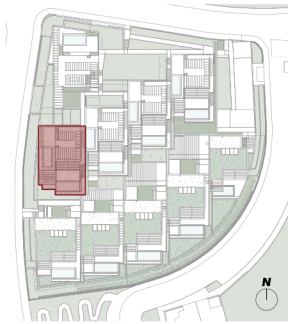
GARAGE FLOOR (ACCESS 2)

AREAS

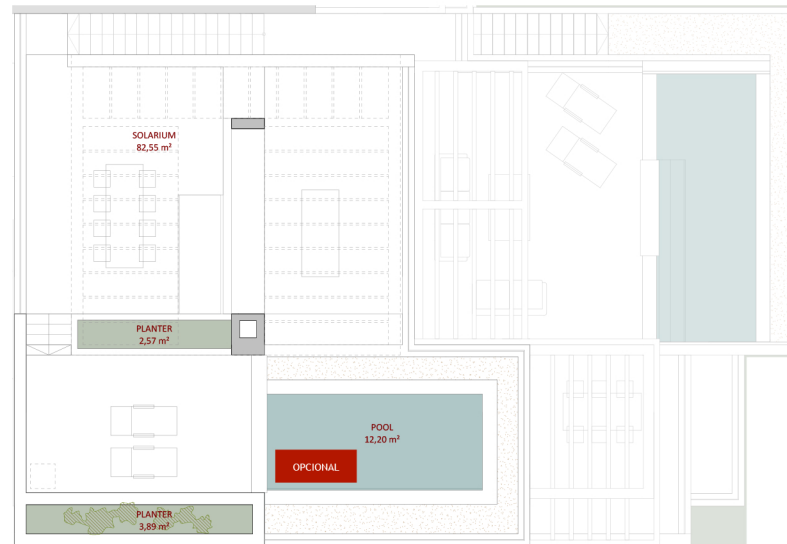
INNER USEFUL AREA	343,94 m ²
OUTER USEFUL AREA	228,53 m ²
INNER BUILT AREA	409,02 m ²
OUTER BUILT AREA	290,29 m ²
TOTAL FLOOR USEFUL AREA	572,47 m ²
TOTAL FLOOR BUILT AREA	699,31 m ²

This document is of purely informative nature and could be subject to changes due to technical requirements. The furniture, including the kitchen unit, is purely informative. The opening direction of the doors and the distribution of the sanitary equipment are non-binding. The areas expressed here are approximated and could be subject to changes for technical considerations during the development and construction of the project. The areas are calculated according to the "Decreto 218/2005" for the information of the customer in the purchase and renting of dwellings in Andalusia.





FIRST FLOOR (ACCESS 1)



CHILL OUT FLOOR

AREAS

INNER USEFUL AREA	343,94 m ²
OUTER USEFUL AREA	228,53 m ²
INNER BUILT AREA	409,02 m ²
OUTER BUILT AREA	290,29 m ²
TOTAL FLOOR USEFUL AREA	572,47 m ²
TOTAL FLOOR BUILT AREA	699,31 m ²

This document is of purely informative nature and could be subject to changes due to technical requirements. The furniture, including the kitchen unit, is purely informative. The opening direction of the doors and the distribution of the sanitary equipment are non-binding. The areas expressed here are approximated and could be subject to changes for technical considerations during the development and construction of the project. The areas are calculated according to the "Decreto 218/2005" for the information of the customer in the purchase and renting of dwellings in Andalusia.

