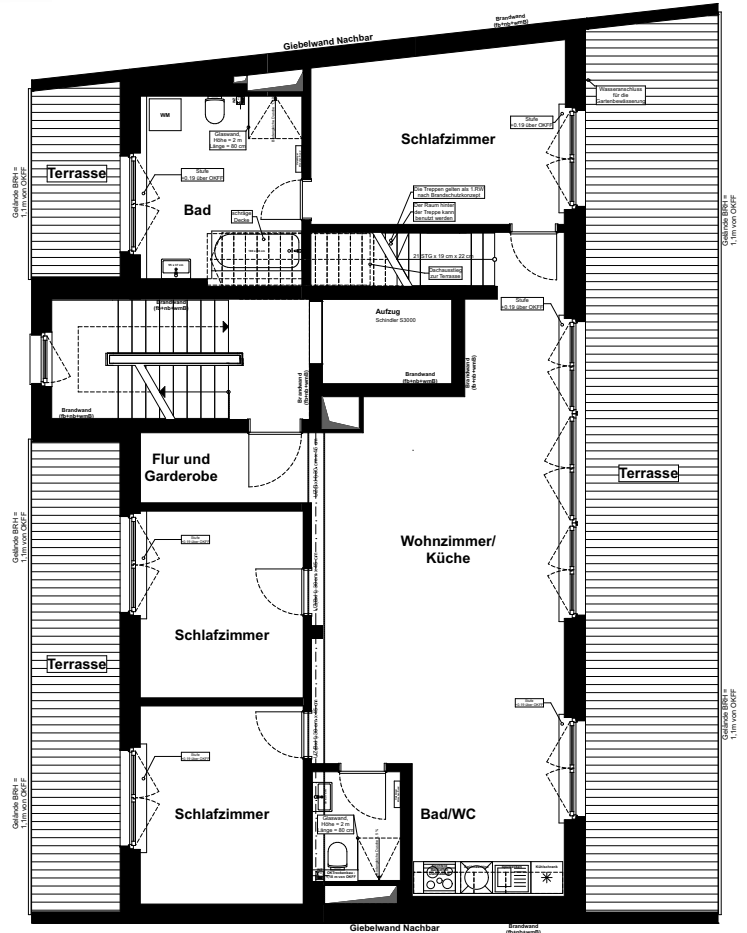
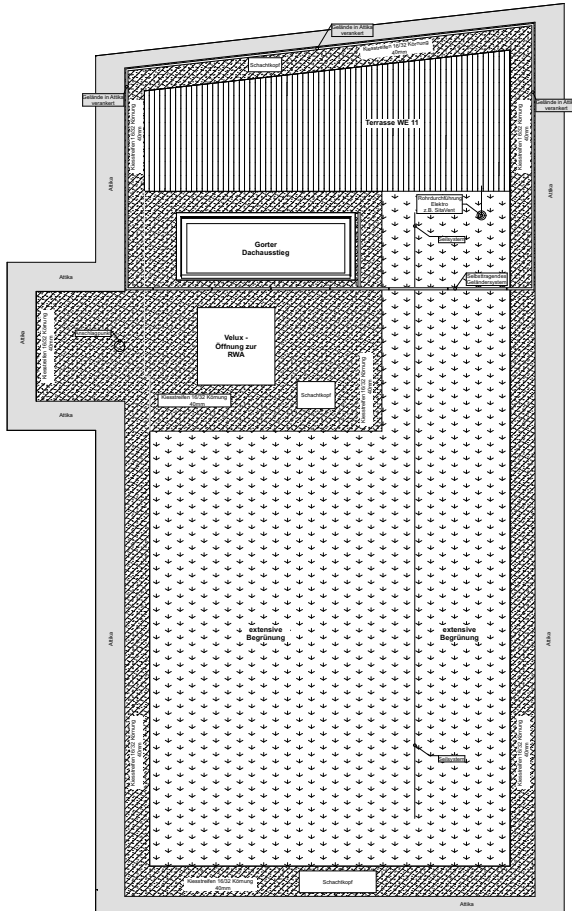


Penthaus 11

Vorderhaus



Eckdaten:

6. OG

Diele / Hall	6,57m ²
Schlafzimmer / Bedroom	16,85m ²
Kinderzimmer 1 / Childroom 1	12,16m ²
Kinderzimmer 2 / Childroom 2	11,58m ²
Wohnen/Essen / Living/Dining	41,41m ²
Badezimmer 1 / Bathroom 1	17,66m ²
Badezimmer 2 / Bathroom 2	4,10m ²
Südterrasse / South Terrace (50%)	10,43m ² (20,85m ²)
Nordterrasse / North Terrace (50%)	21,08m ² (42,16m ²)
Dachterrasse / Rooftop Terrace (50%)	7,12m ² (14,23m ²)

Summe / Total

148,95m² (187,57m²)