

7385

75

1865

201  
1385

101  
226

202

1385

1385

7385

7385

3.00

101

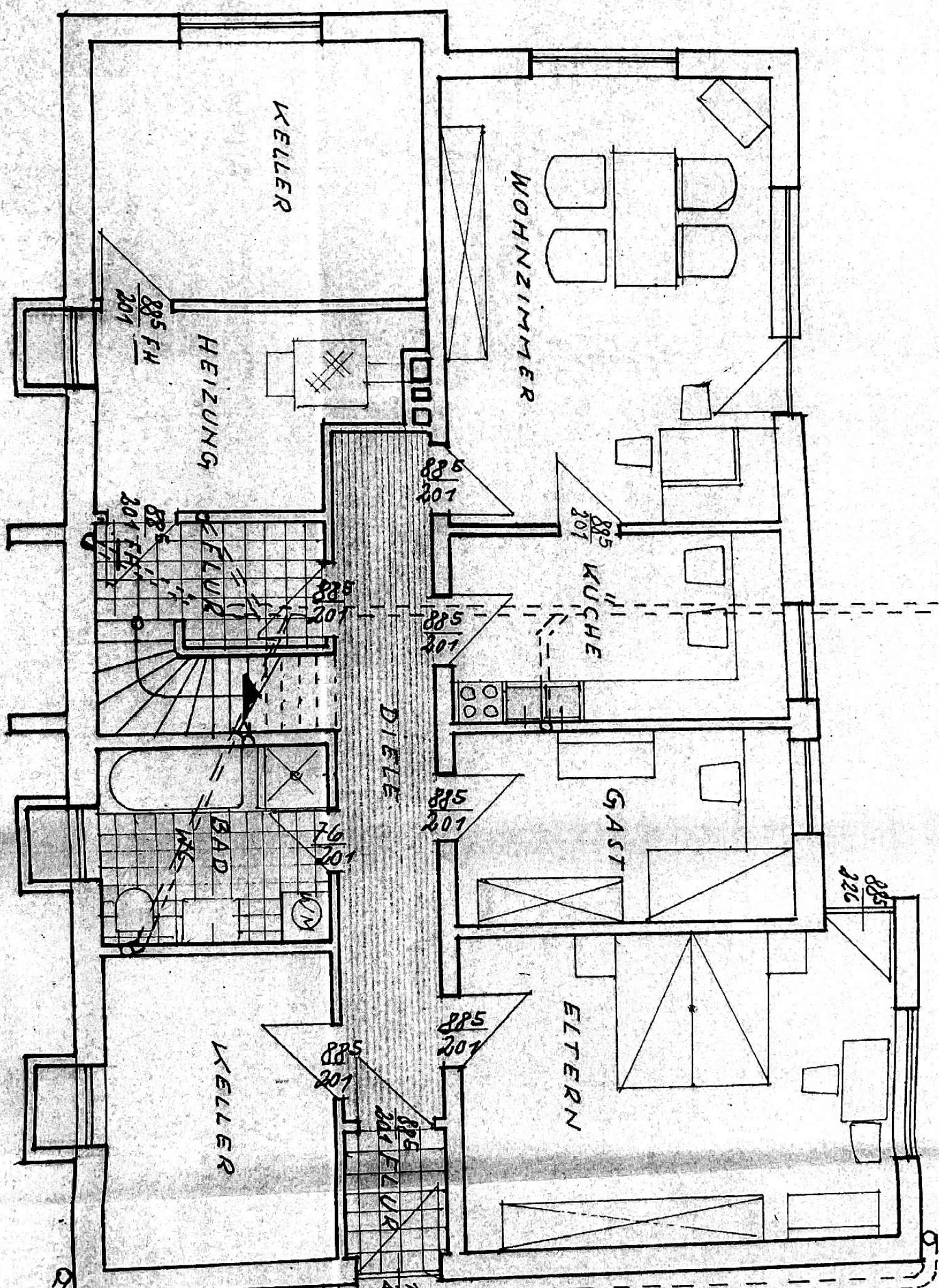
5.71

101

2.365

101

7815

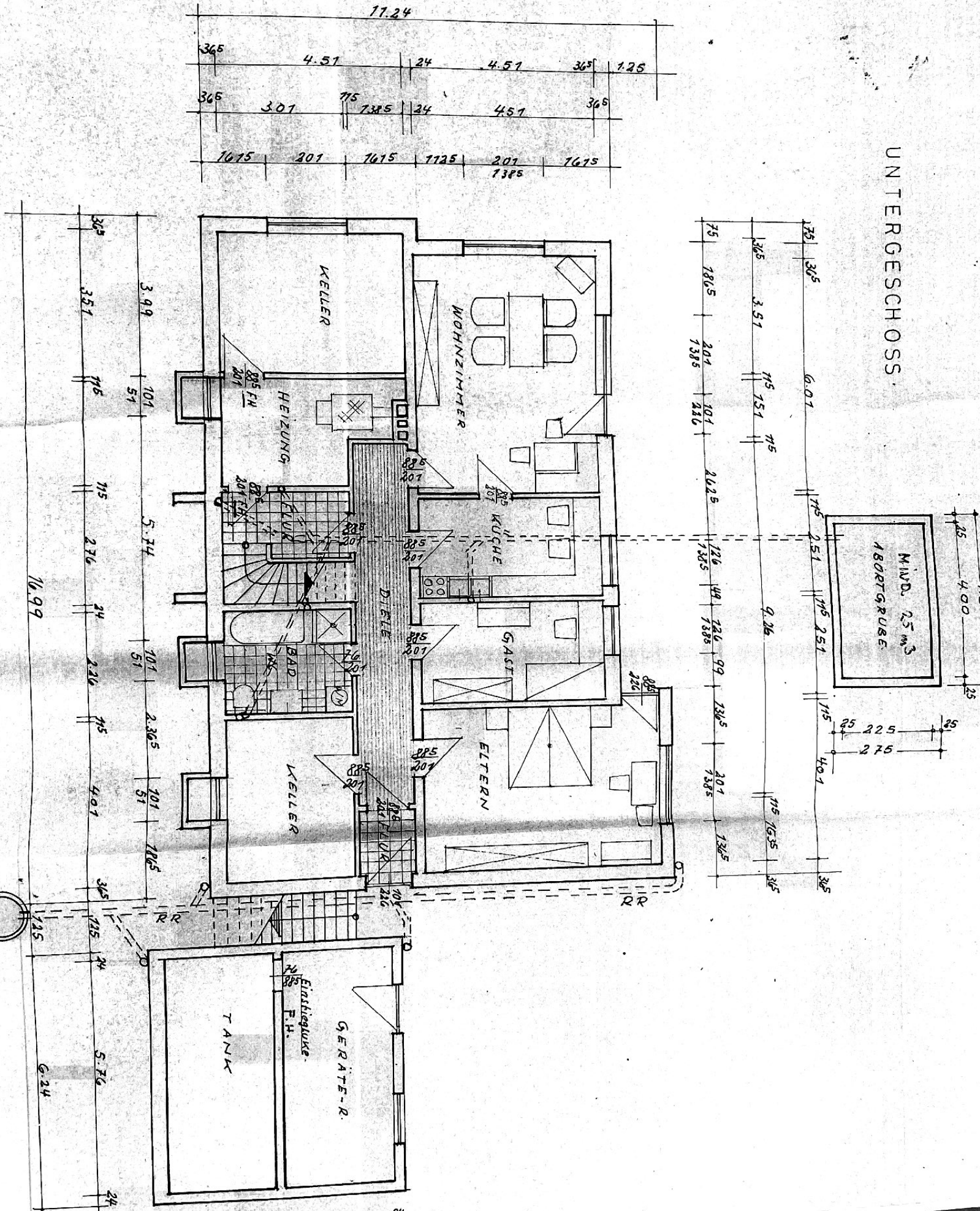


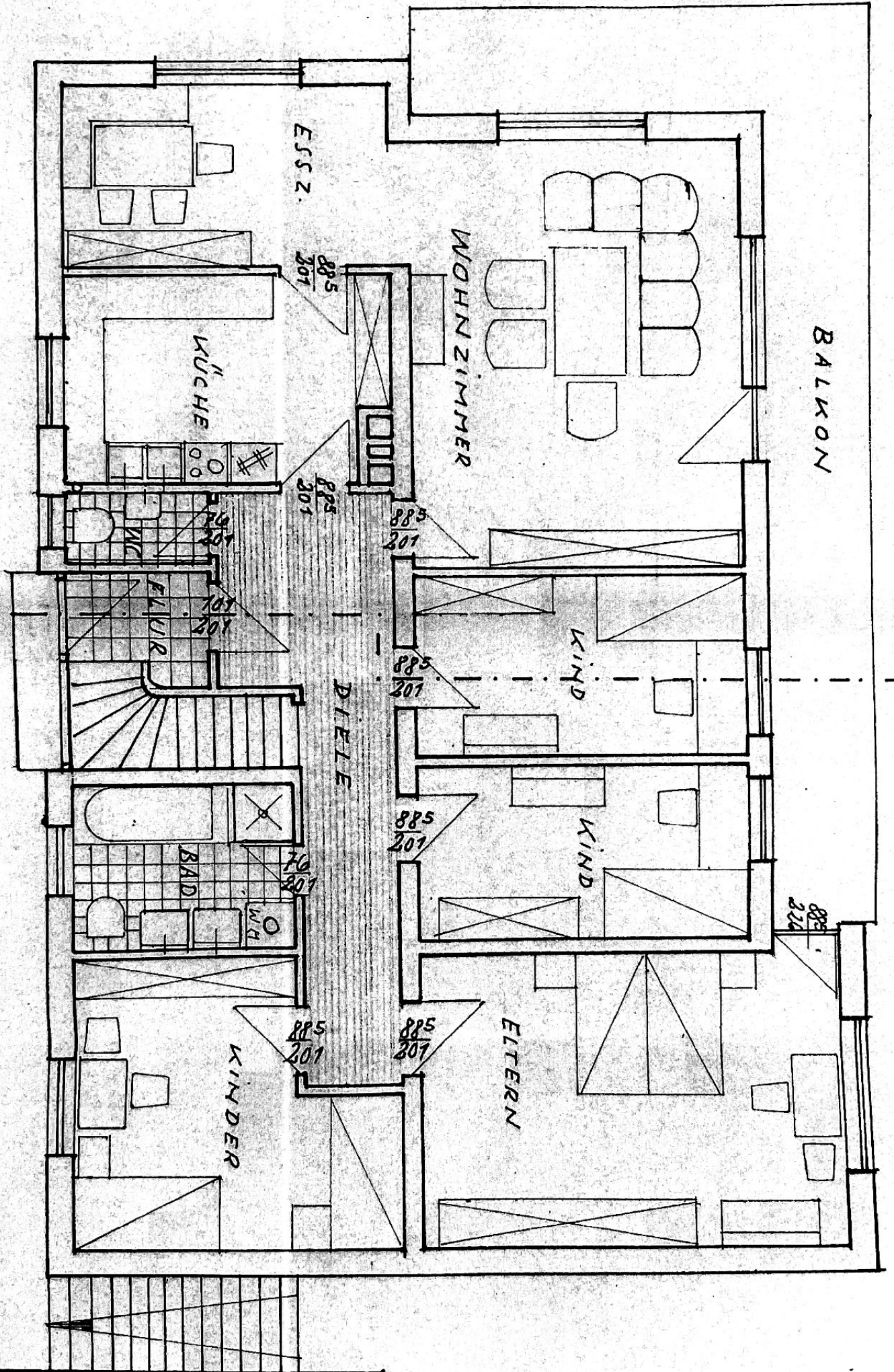
RR

RR



UNTERGESCHOSS

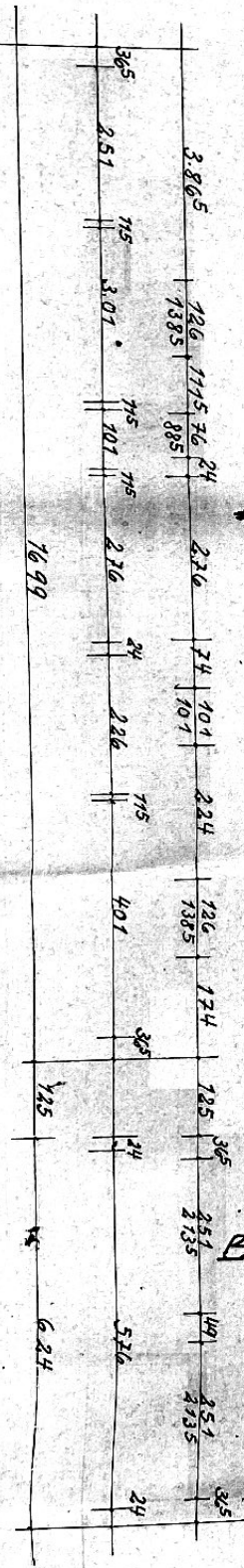
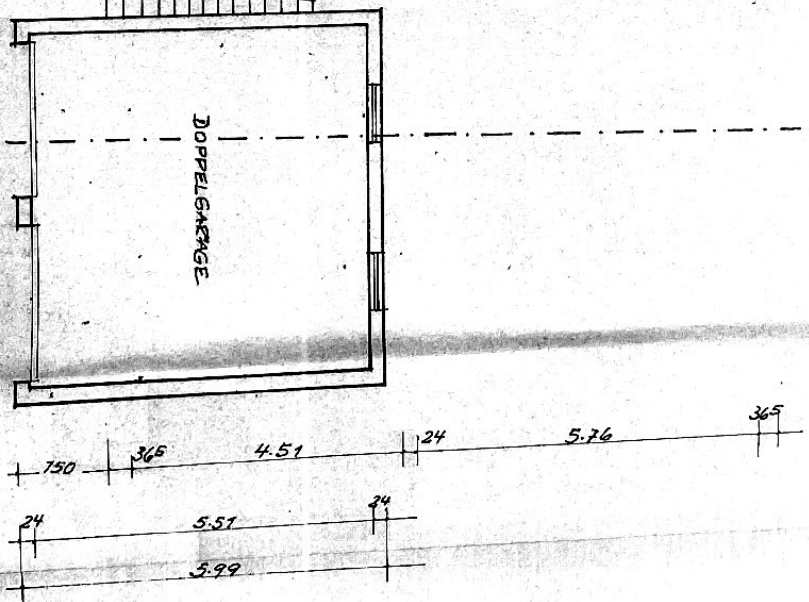
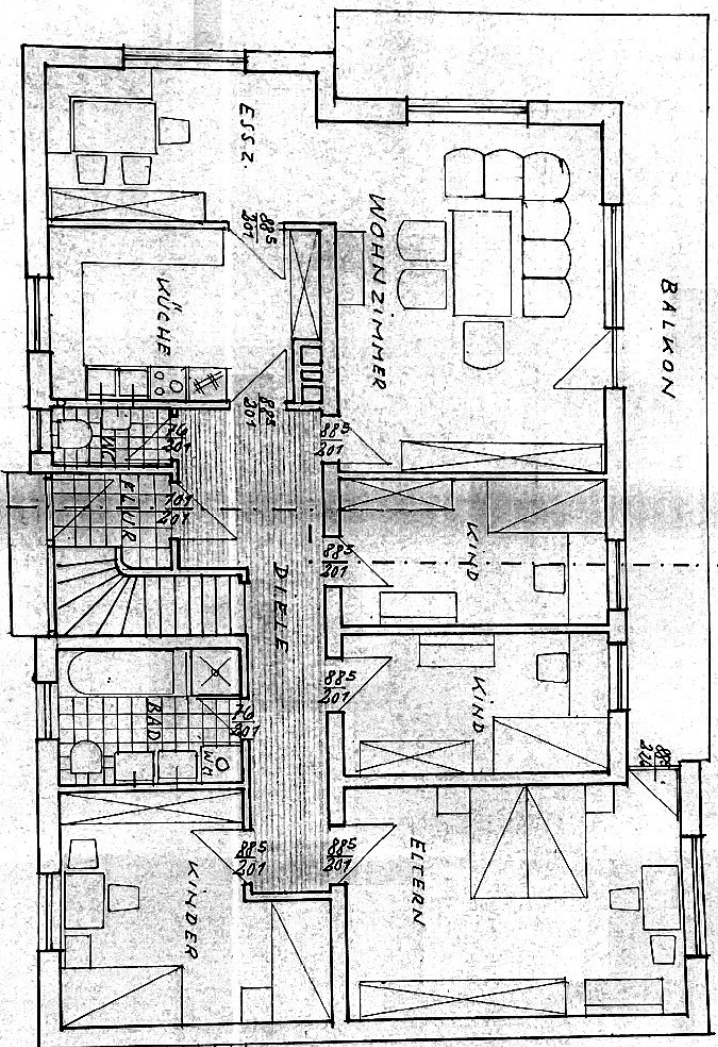
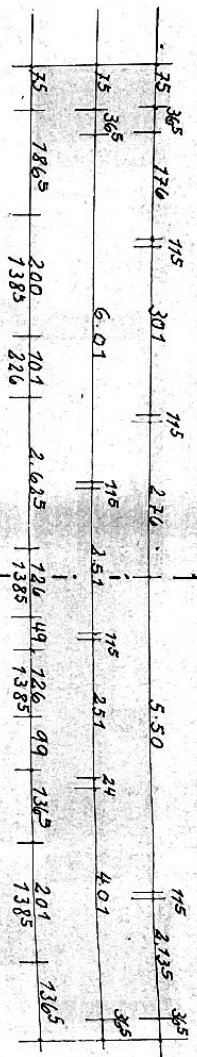
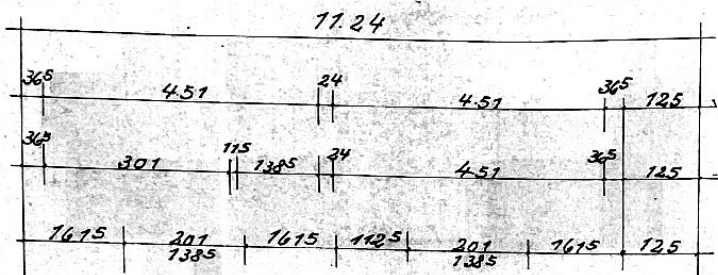




188  
200  
1385  
226  
201  
1385  
1385  
1385  
1385  
1385  
1385

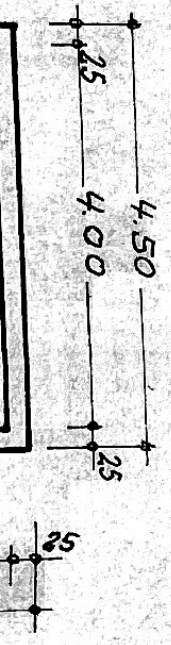
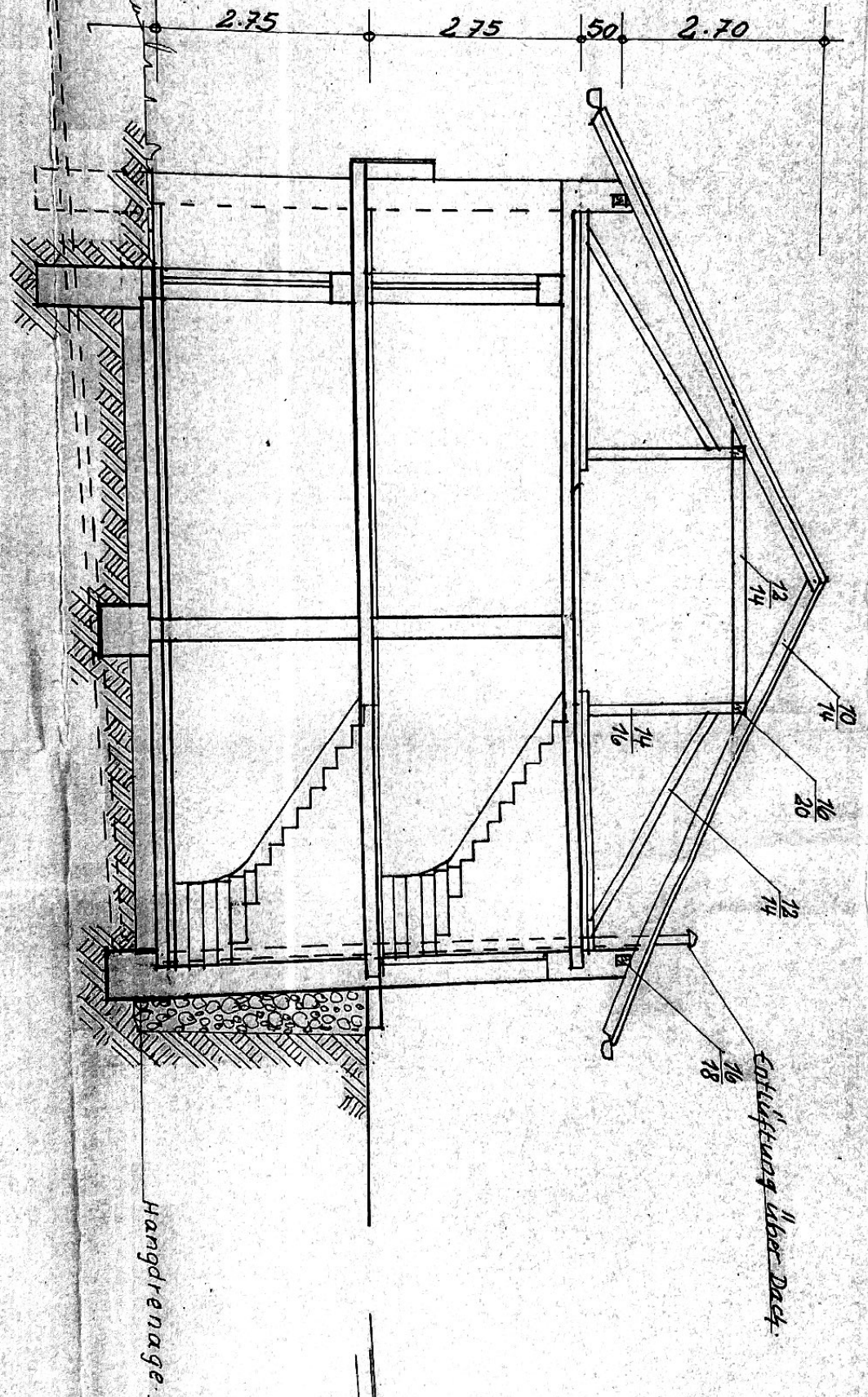


ERDGESCHOSS



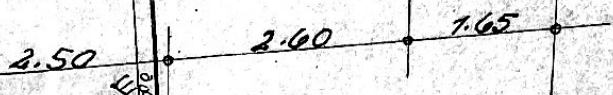


SCHNITT = A-A



Handdrainage

Entlüftung über Dach

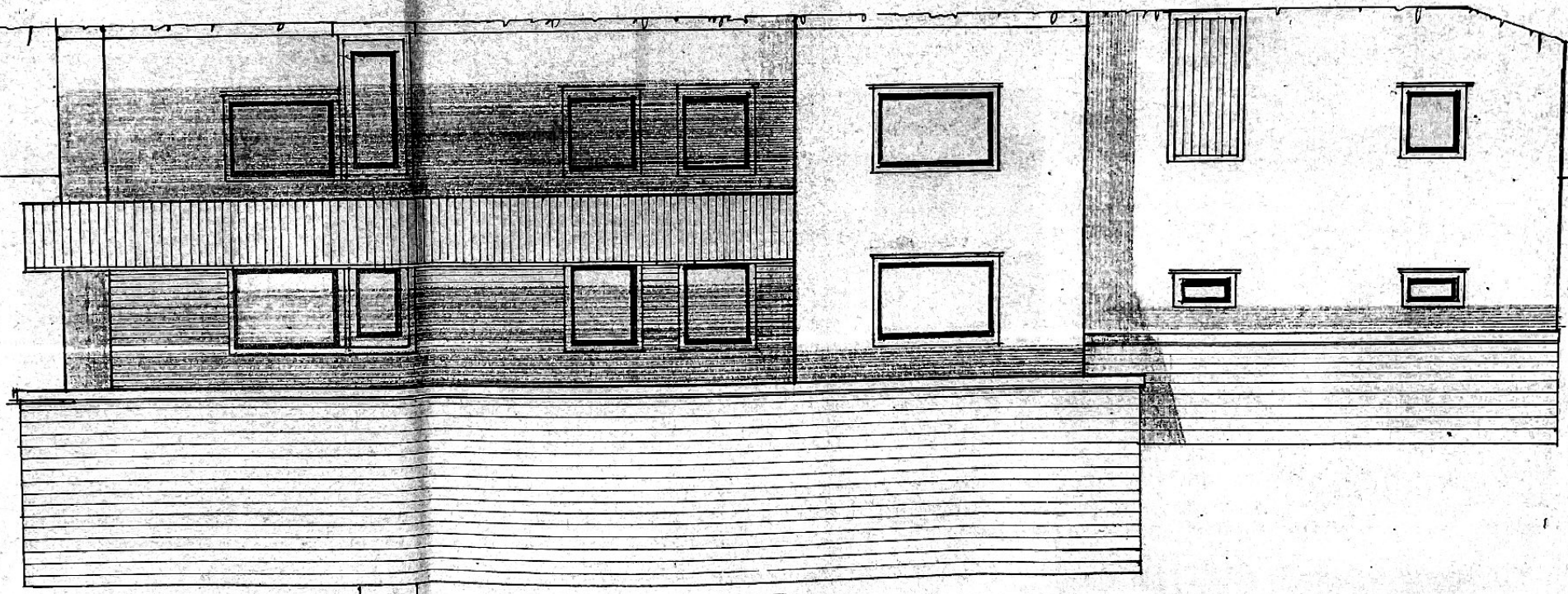






SCHNITT = A-A

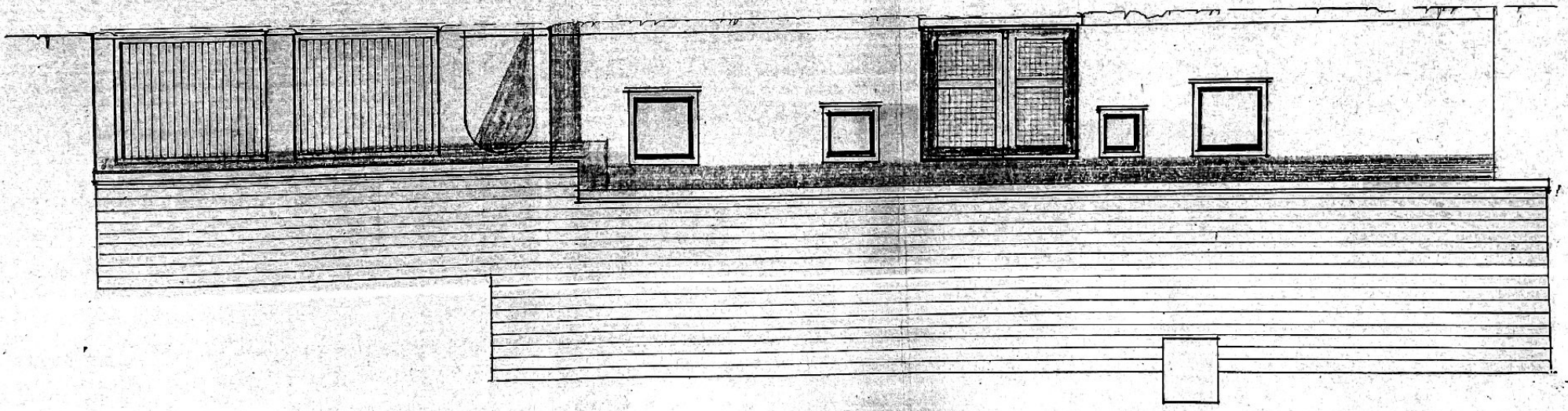
SCHN



WEST = ANSICHT

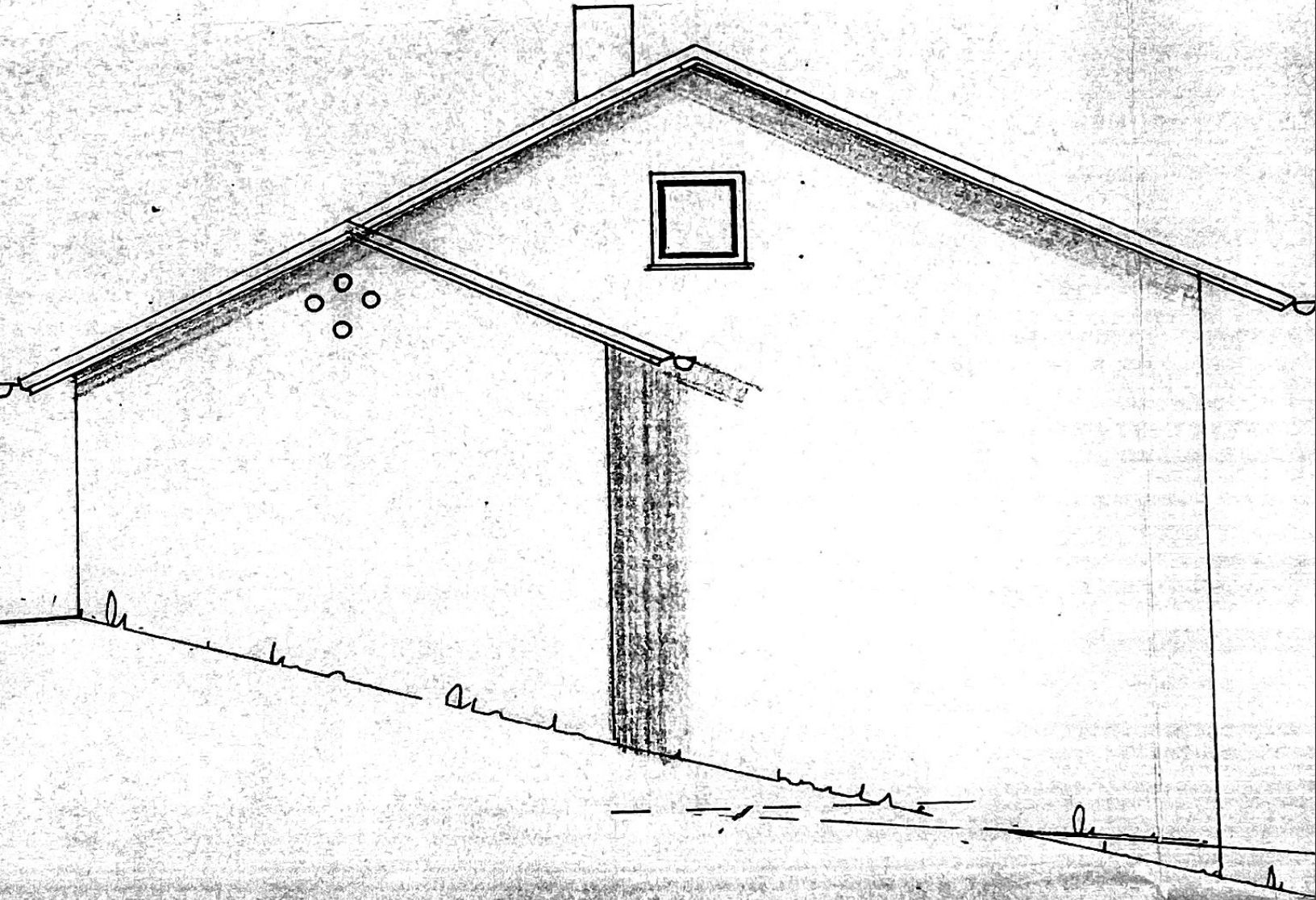


NORD = ANSICHT



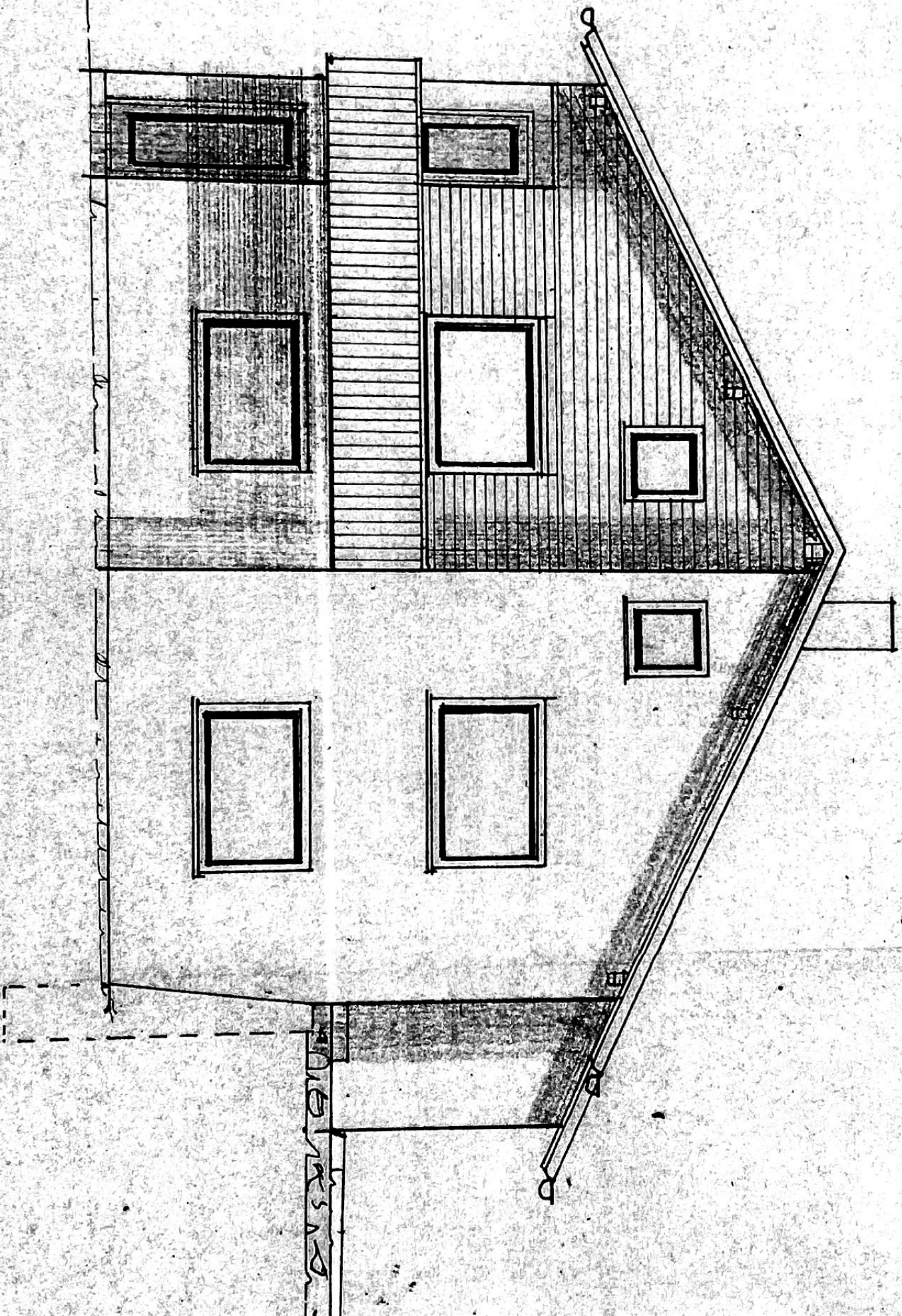
OST = ANSICHT

NORD = ANSICHT





SÜD = ANSICHT



# Berechnung der Wohnraumfläche.

## Wohnraumfläche Untergeschoss:

1. Wohnzimmer	$6,01 \times 4,51 =$	27,10 qm
2. Eltern	$5,76 \times 4,01 =$	23,09 qm
3. Küche	$4,51 \times 2,51 =$	11,32 qm
4. Gast	$4,51 \times 2,51 =$	11,32 qm
5. Bad, WC	$3,01 \times 2,26 =$	6,80 qm
6. Diele	$9,01 \times 1,385 : 2 =$	6,24 qm
		<hr/>
		85,87 qm
	- 3 % für Putz =	2,57 qm
		<hr/>
	Wohnraumfläche Untergeschoss =	83,30 qm
		=====

## Wohnraumfläche Erdgeschoss:

1. Wohnzimmer	$6,01 \times 4,51 =$	27,10 qm
2. Schlafzimmer	$5,76 \times 4,01 =$	23,09 qm
3. Kind	$4,51 \times 2,51 =$	11,32 qm
4. Kind	$4,51 \times 2,51 =$	11,32 qm
5. Kinder	$4,51 \times 2,135 + 3,01 \times 1,875 =$	15,26 qm
6. Küche	$4,51 \times 3,04 - 1,00 \times 0,375 =$	13,20 qm
7. Esszimmer	$4,51 \times 2,51 + 1,76 \times 0,24 =$	11,74 qm
8. Bad	$3,01 \times 2,26 =$	6,80 qm
9. WC	$1,885 \times 1,01 =$	1,90 qm
10. Diele	$8,26 \times 1,385 + 2,76 \times 1,125 =$	14,54 qm
		<hr/>
		136,27 qm
	- 3 % für Putz =	4,08 qm
		<hr/>
	Wohnraumfläche Erdgeschoss =	132,19 qm
		=====
	Wohnraumfläche zusammen =	215,49 qm
		=====

Baugeschäft Kaver Weber  
 3491 Rindling Nr. 68  
 Tel. 09971