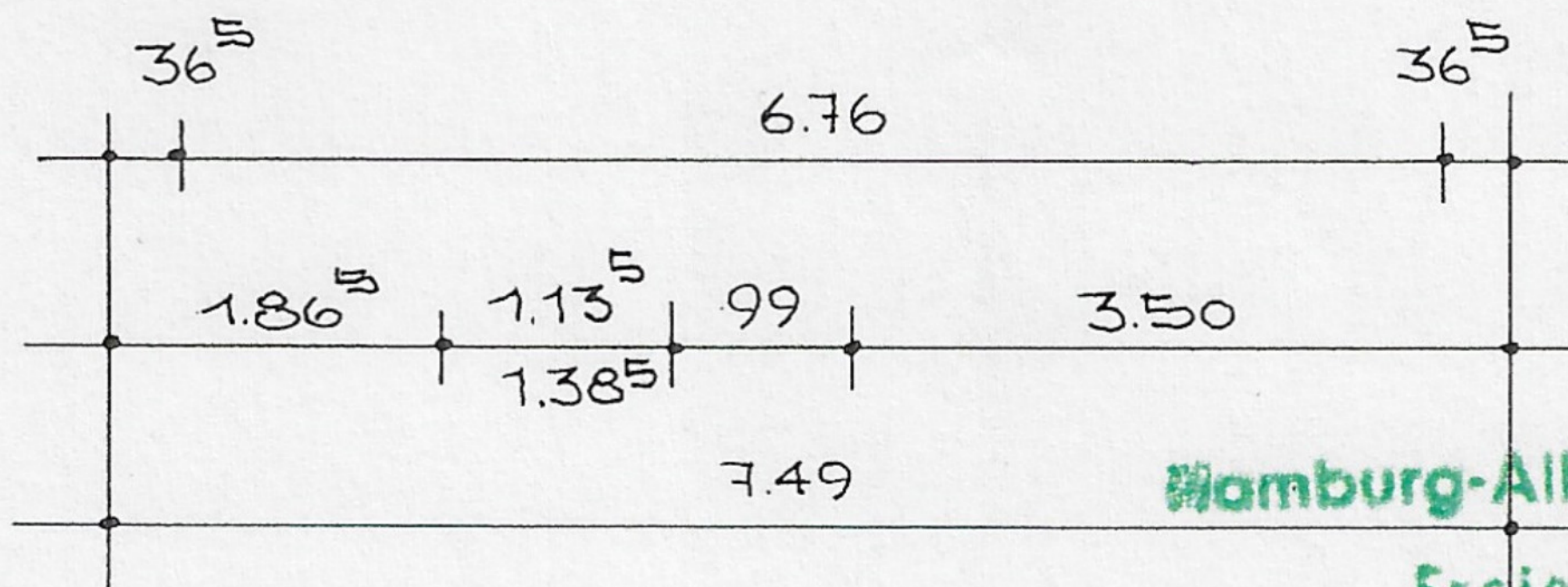
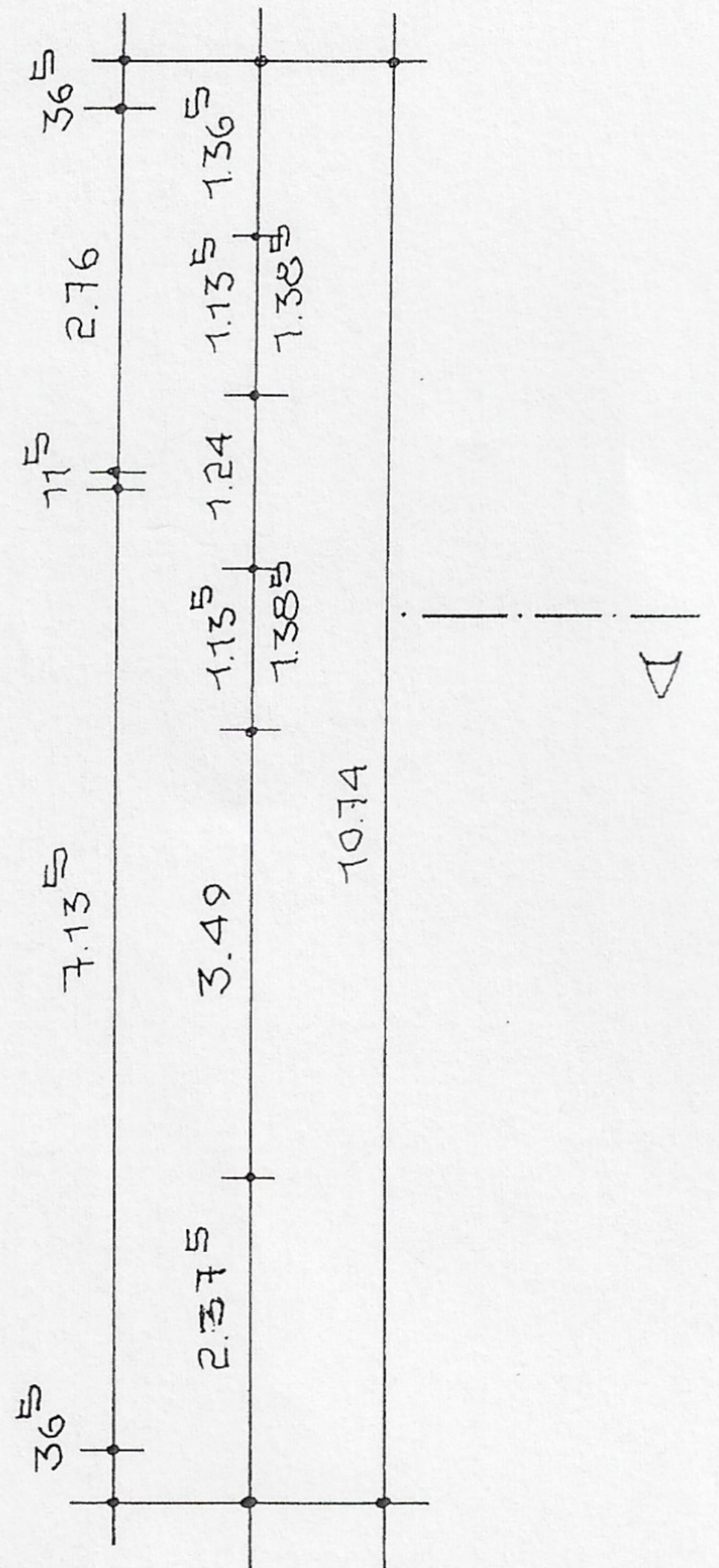
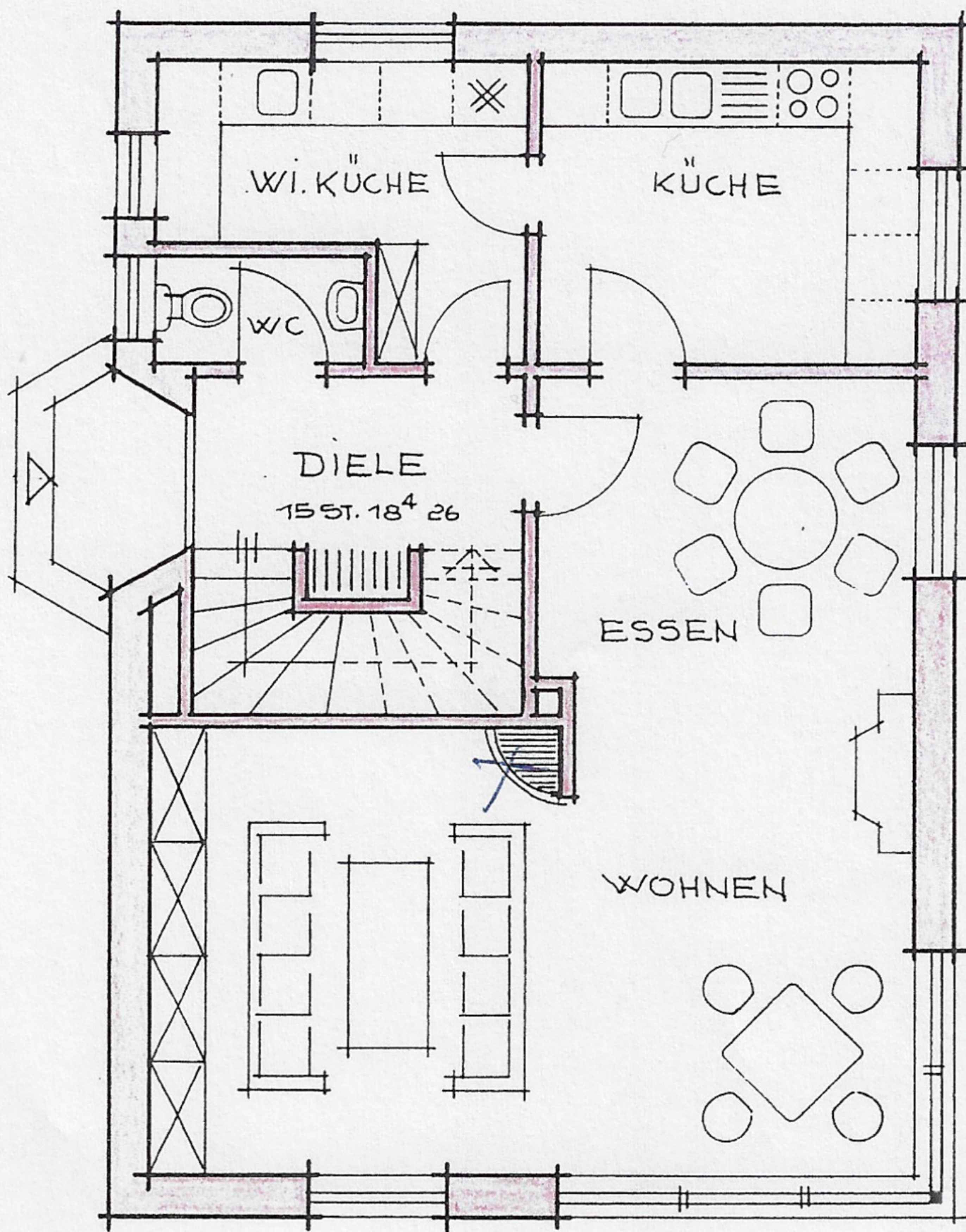
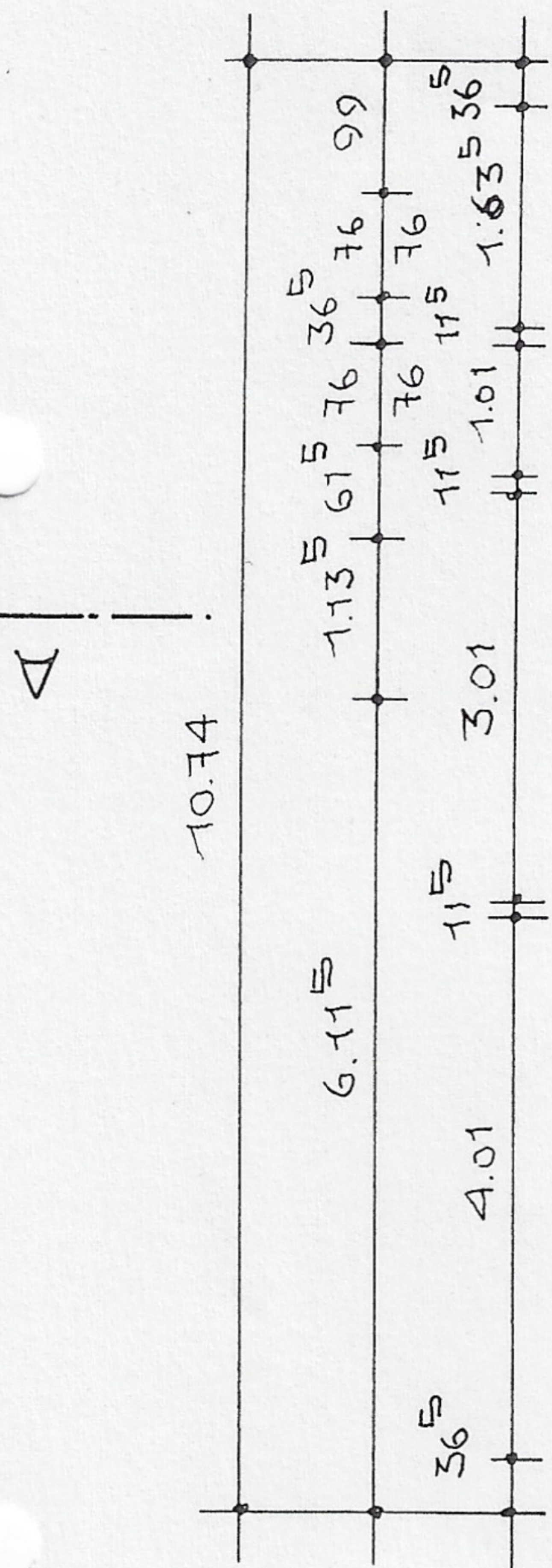
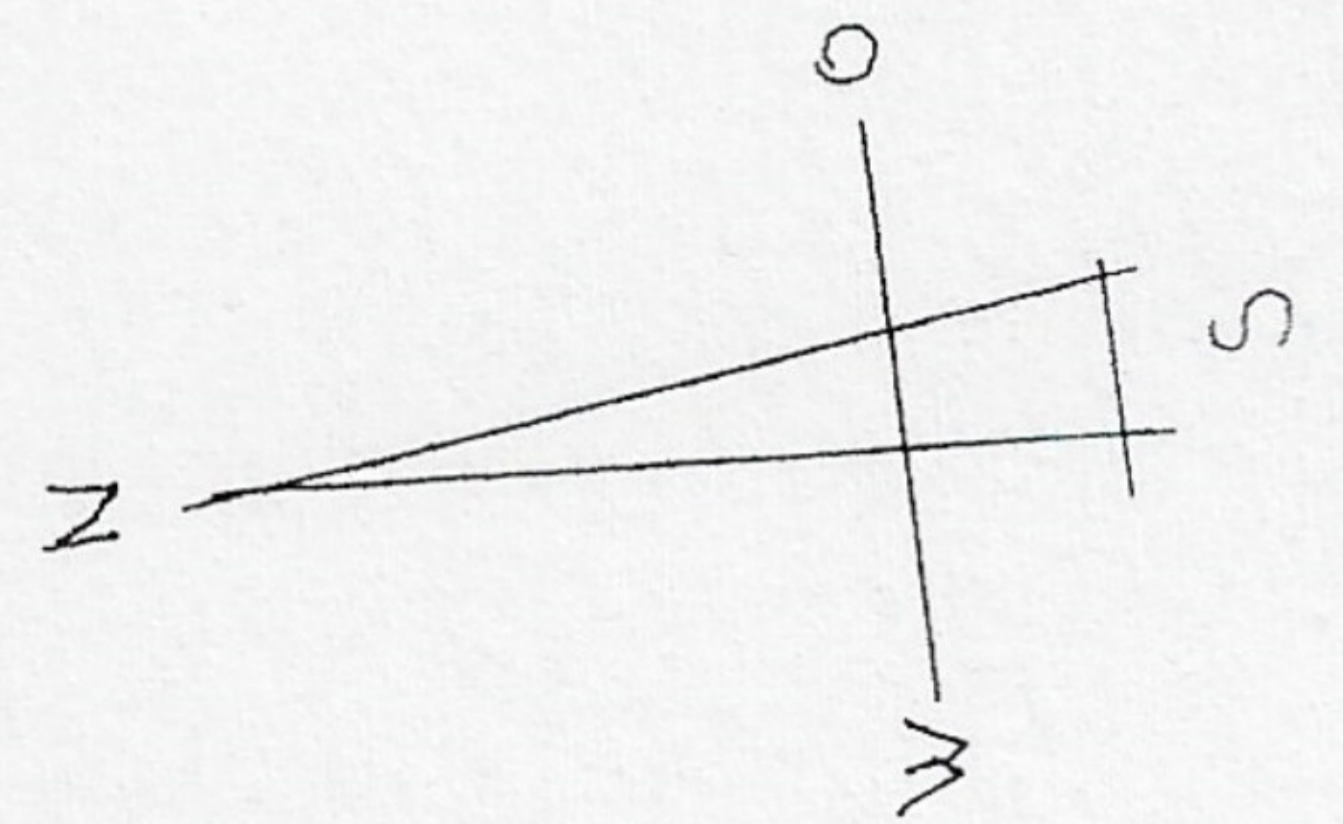
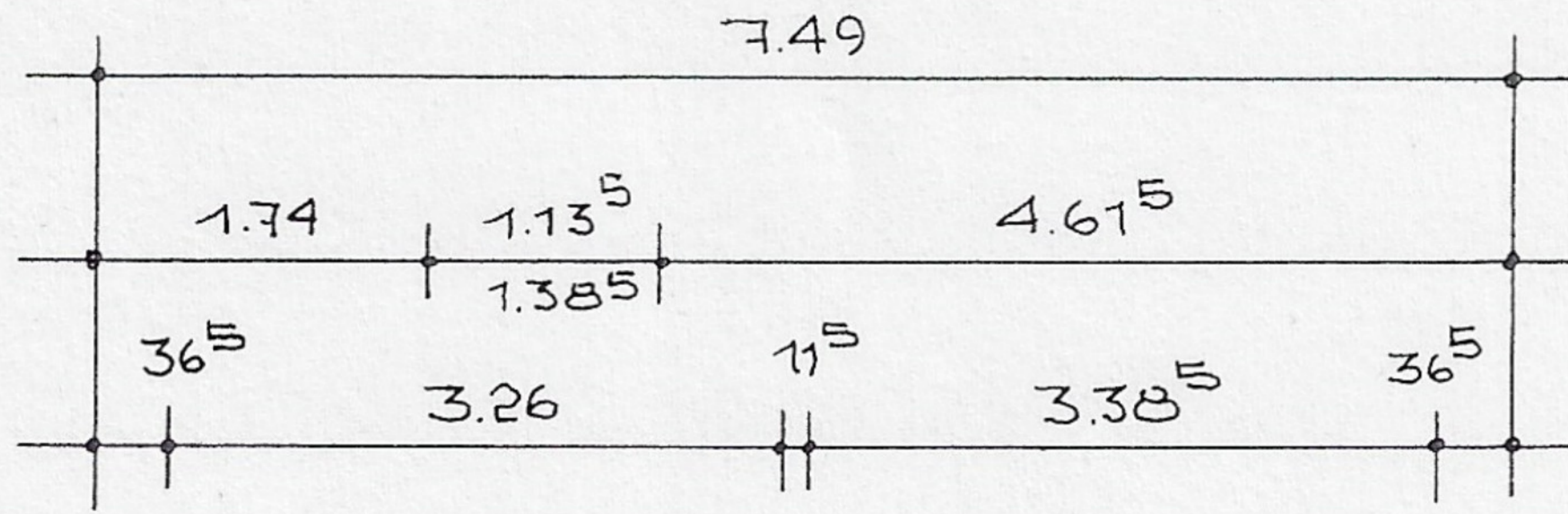


Vm - 382 / 86

Z. D. A. 2 8



GEPROFTI *Feb 2/8-14*

Hamburg-Allermöhe, d. 17. SEP. 1986

Freie und Hansestadt Hamburg  
Bezirksamt Bergedorf  
Ortsamt Vier- und Marschlande  
Baubteilung  
- Bauprüfung - *[Signature]*

ERDGESCHOSS M = 1 : 100