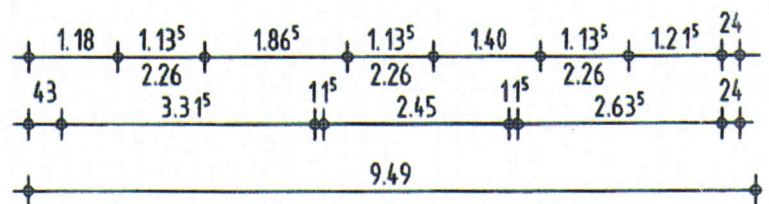
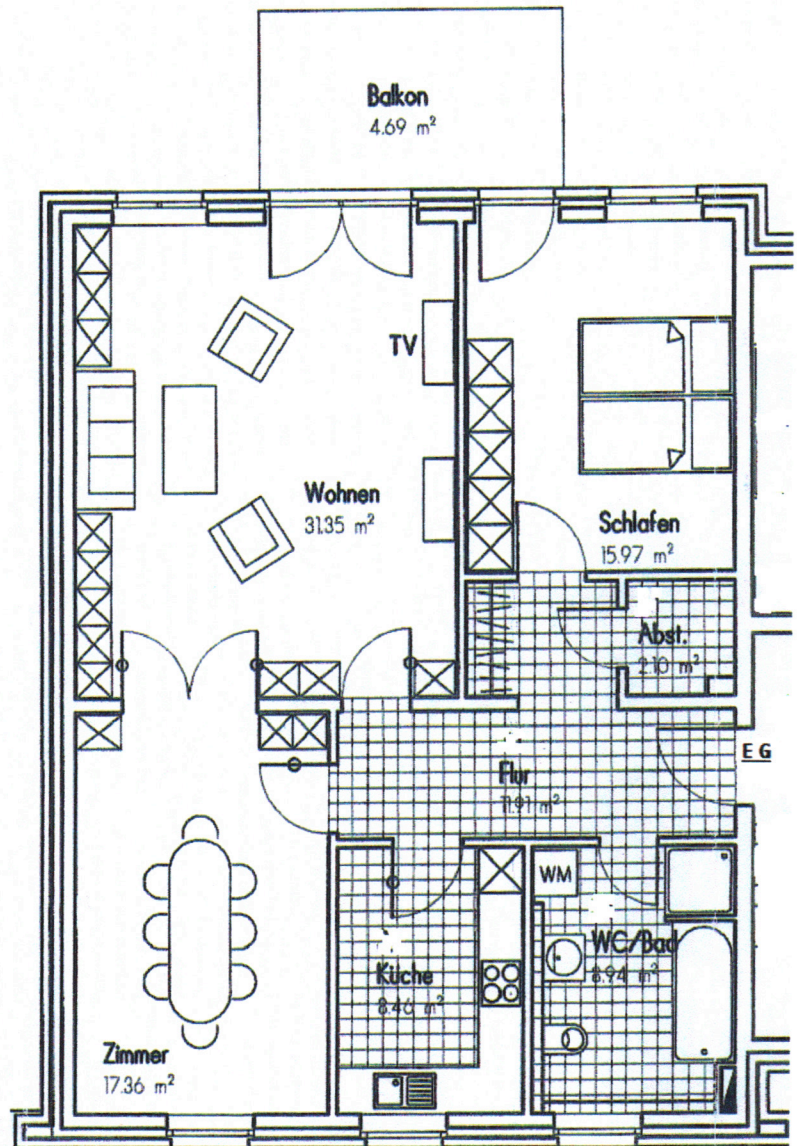
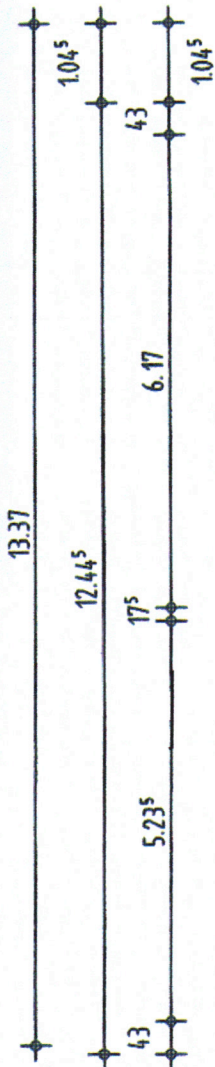
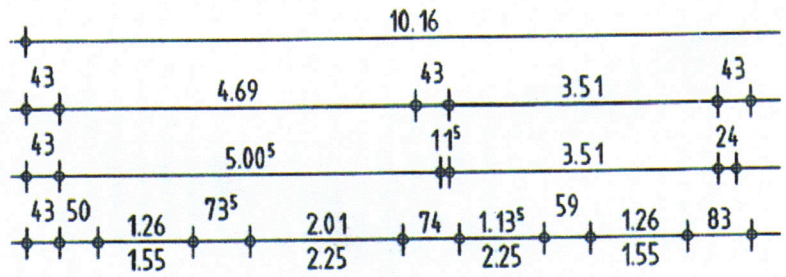


21335 Lüneburg  
Im Wendischen Dorfe 2

Wohnung OG, links

Schlafen	16,0 m <sup>2</sup>
Flur	11,9 m <sup>2</sup>
Küche	8,5 m <sup>2</sup>
Abstellraum	2,1 m <sup>2</sup>
Wohnen	31,3 m <sup>2</sup>
Bad	8,9 m <sup>2</sup>
Essen	17,4 m <sup>2</sup>
Balkon	9,4 m <sup>2</sup>

Wohnfläche Ges. 101 m<sup>2</sup>



# OBERGESCHOSS