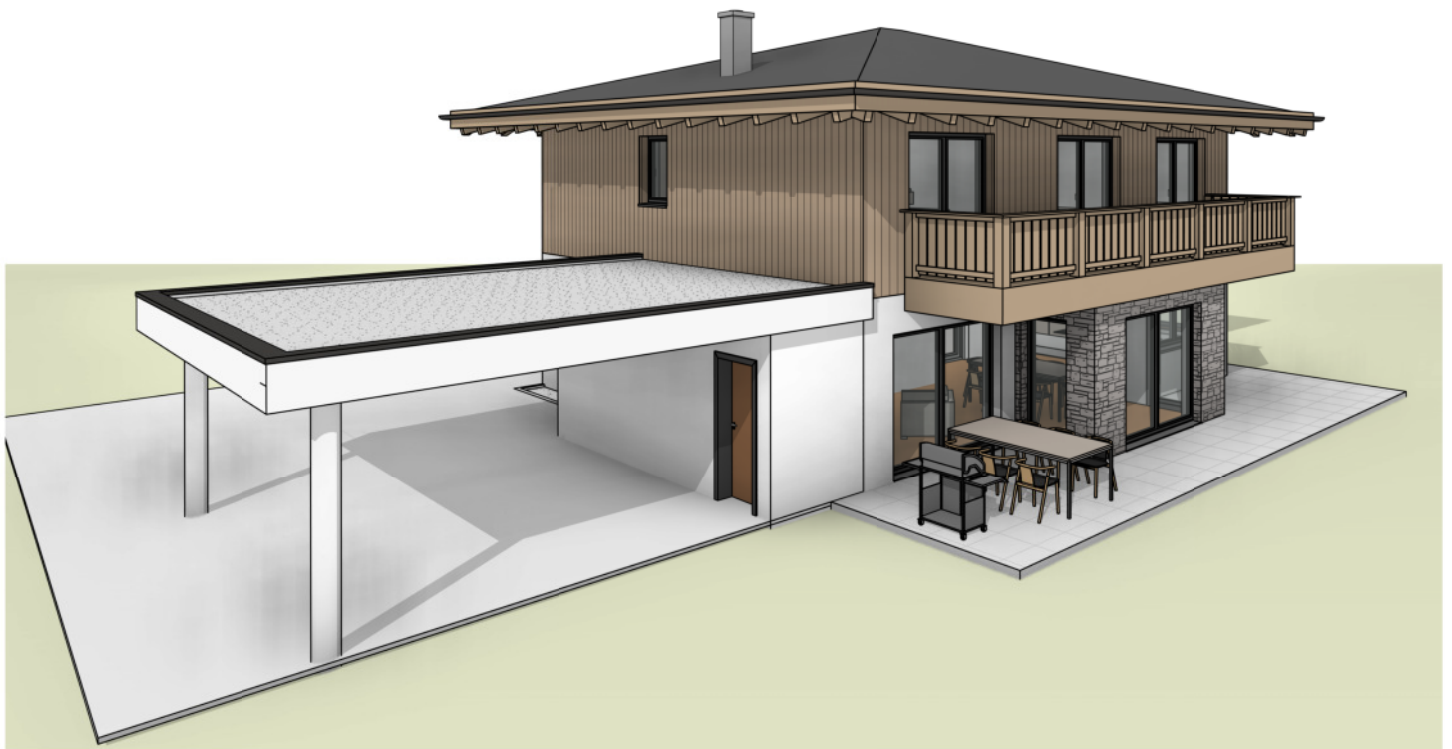


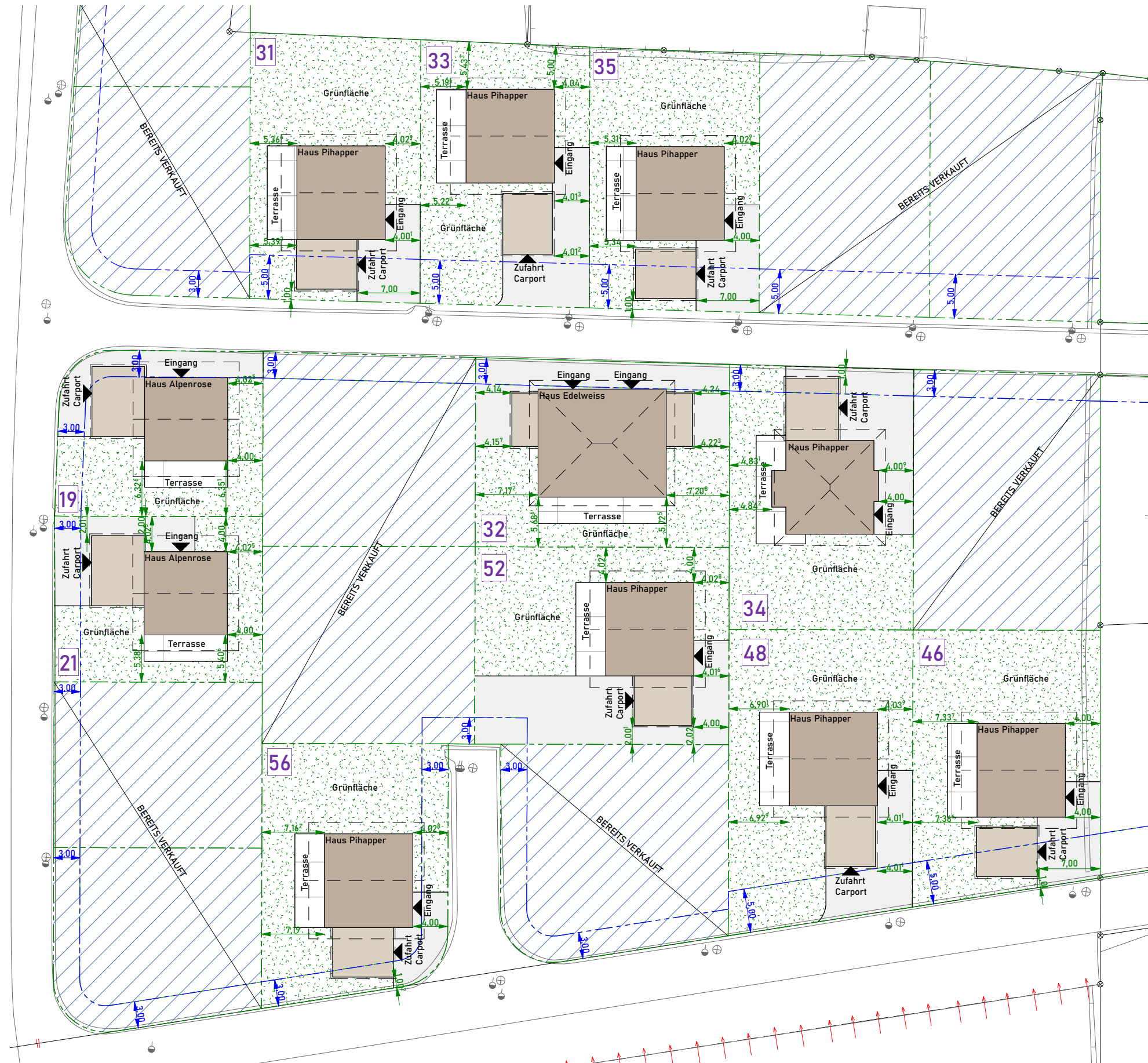
# HAUS PIHAPPER

Haus Pihapper  
Bräufeldweg  
Mittersill

Wohnnutzfläche	161,82m <sup>2</sup>
-01. Untergeschoß	77,14m <sup>2</sup>
Carport/Abstellflächen	40,62m <sup>2</sup>
Terrassenflächen	37,72m <sup>2</sup>
Balkon	15,77m <sup>2</sup>



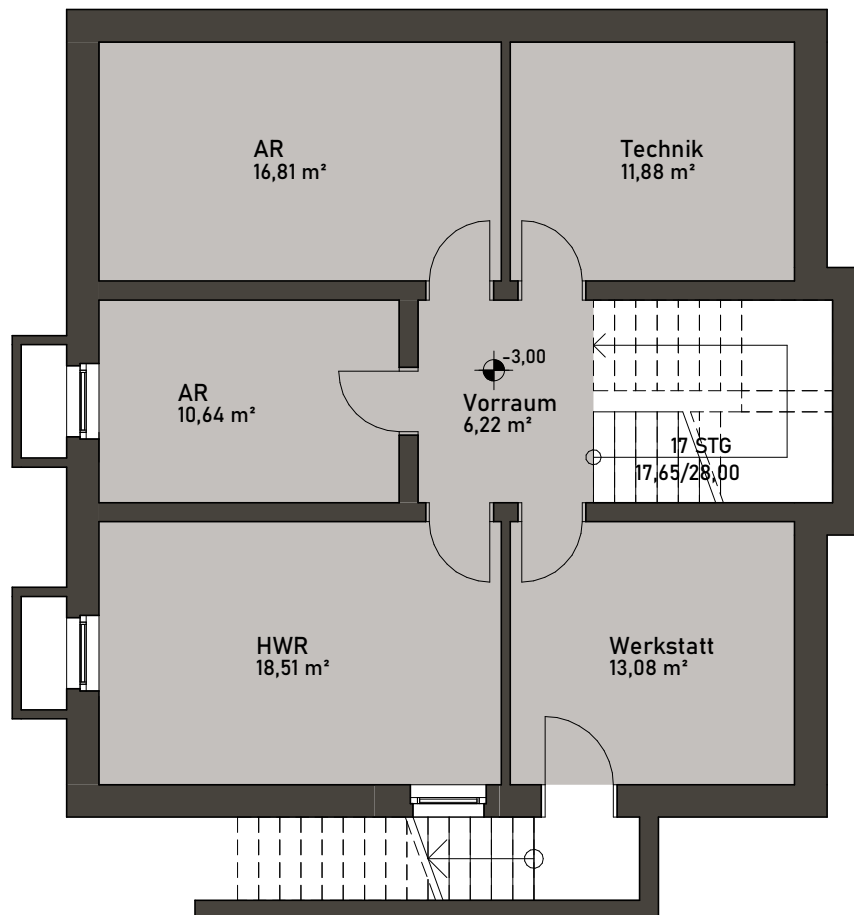
1m 5m  
M 1:100



# HAUS PIHAPPER

## Haus Pihapper Bräufeldweg Mittersill

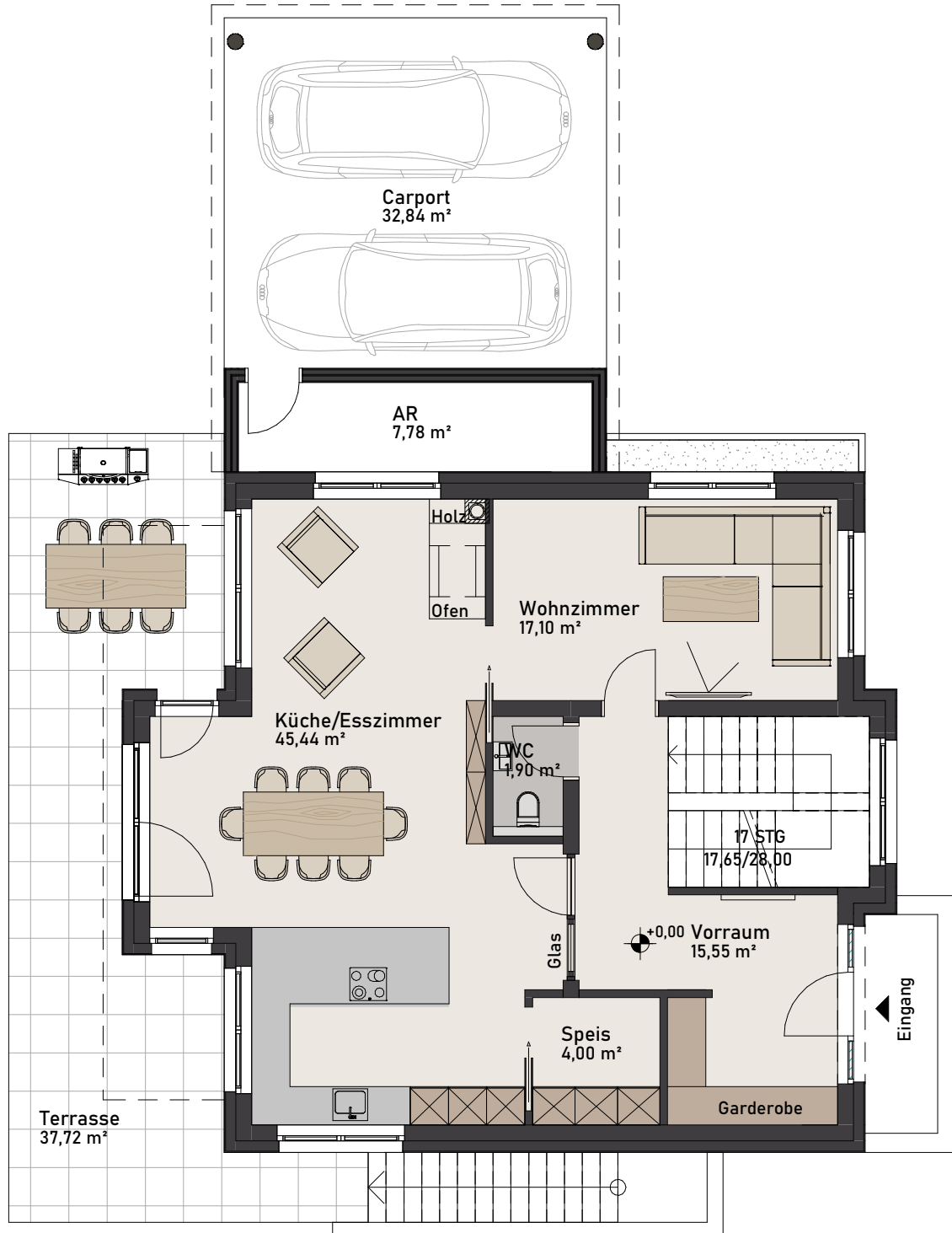
-01. Untergeschoß  
Nutzfläche: 77,14m<sup>2</sup>



# HAUS PIHAPPER

## Haus Pihapper Bräufeldweg Mittersill

±00. Erdgeschoß  
Nutzfläche: 83,99m<sup>2</sup>



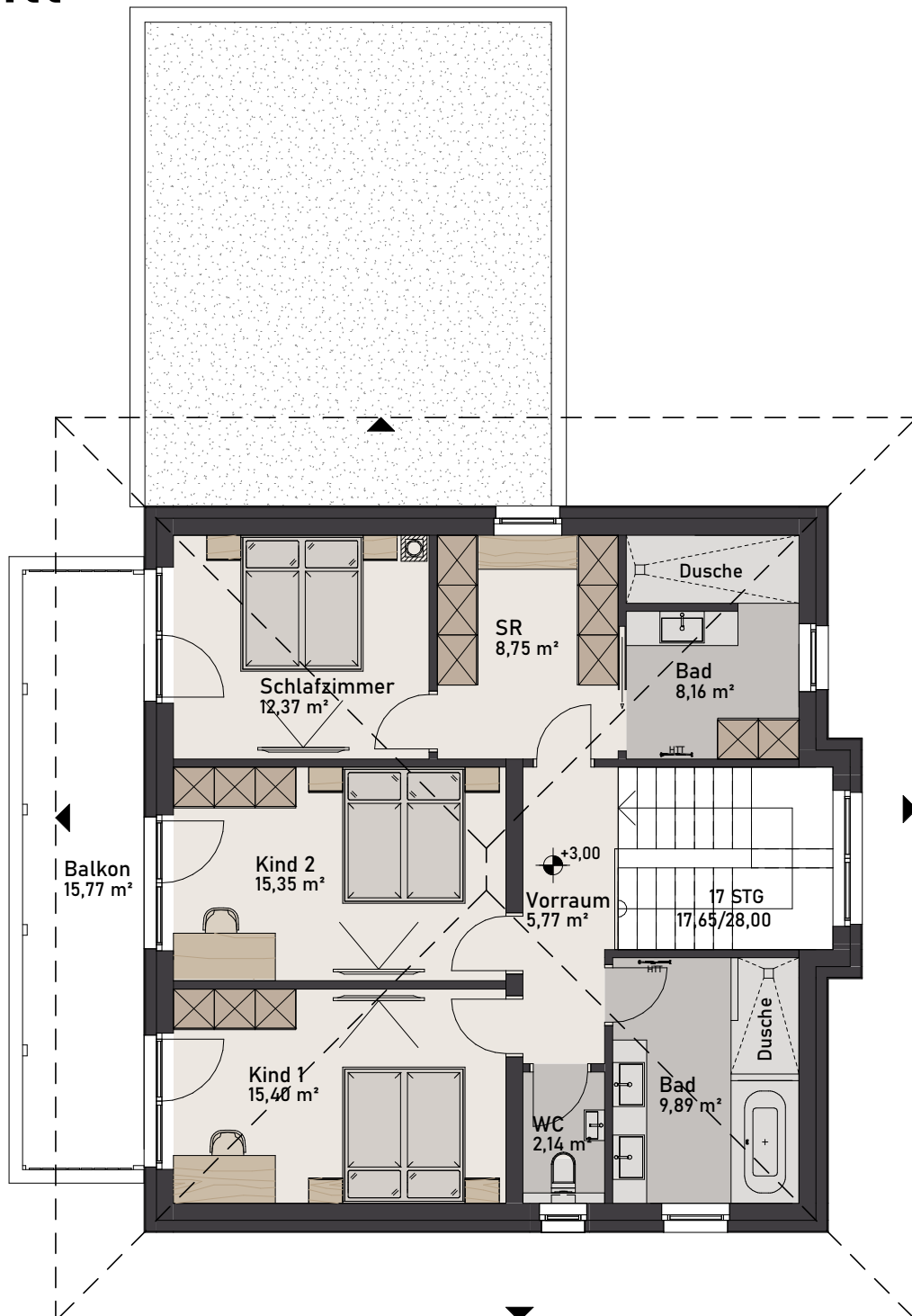
1m 5m  
M 1:100

CN / 12.03.2021

# HAUS PIHAPPER

## Haus Pihapper Bräufeldweg Mittersill

+01. Obergeschoß  
Nutzfläche: 77,83m<sup>2</sup>



M 1:100

CN / 12.03.2021

# HAUS PIHAPPER

## Haus Pihapper Bräufeldweg Mittersill

Haustyp H1 Nr.:34

Grünfläche

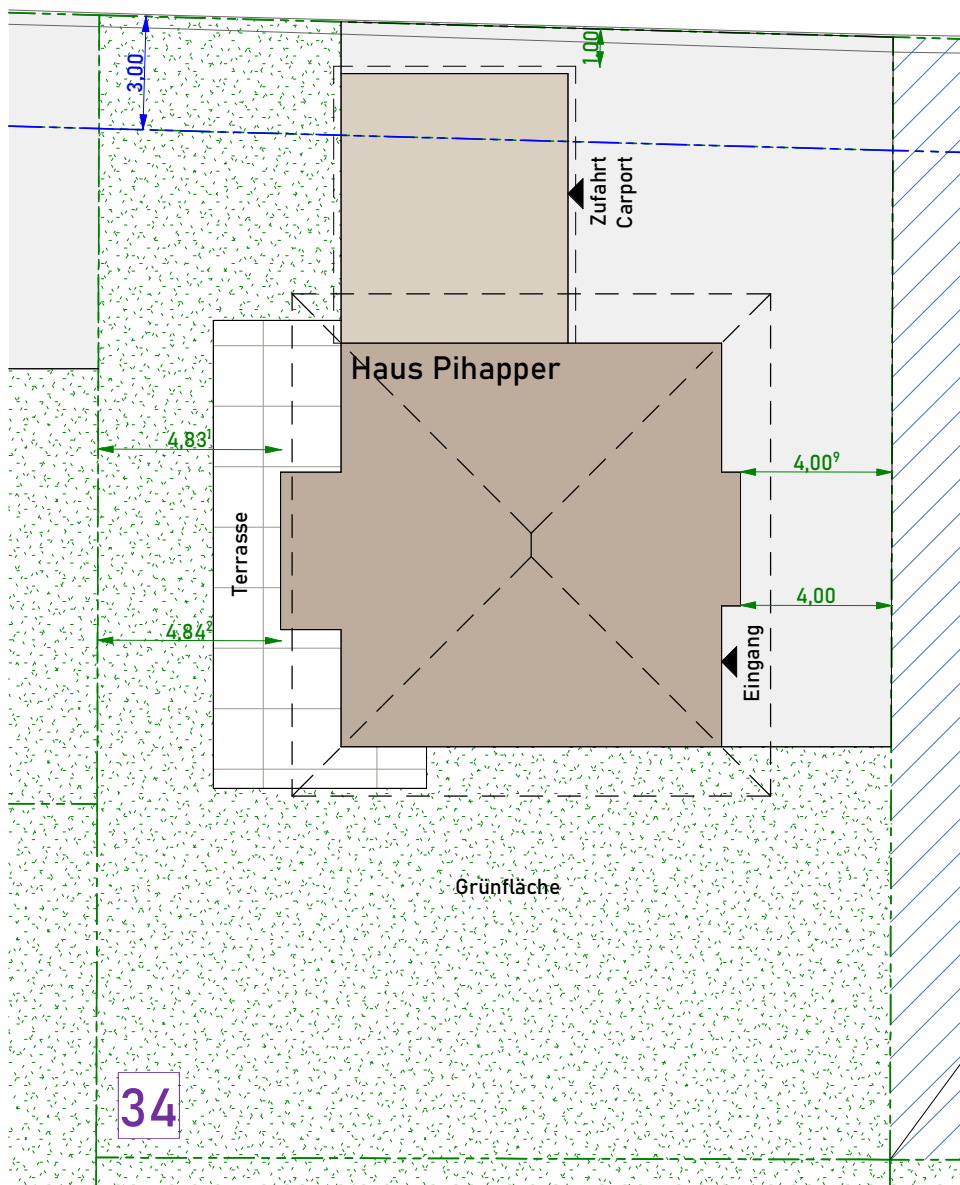
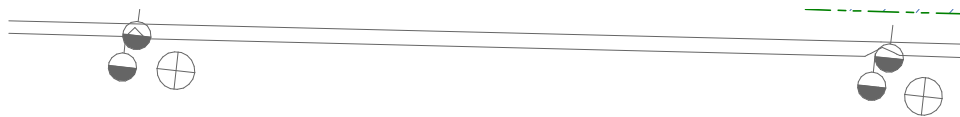
308,16m<sup>2</sup>

Asphaltfläche

124,61m<sup>2</sup>

Grundstückgröße

629m<sup>2</sup>



1m 10m

M 1:200