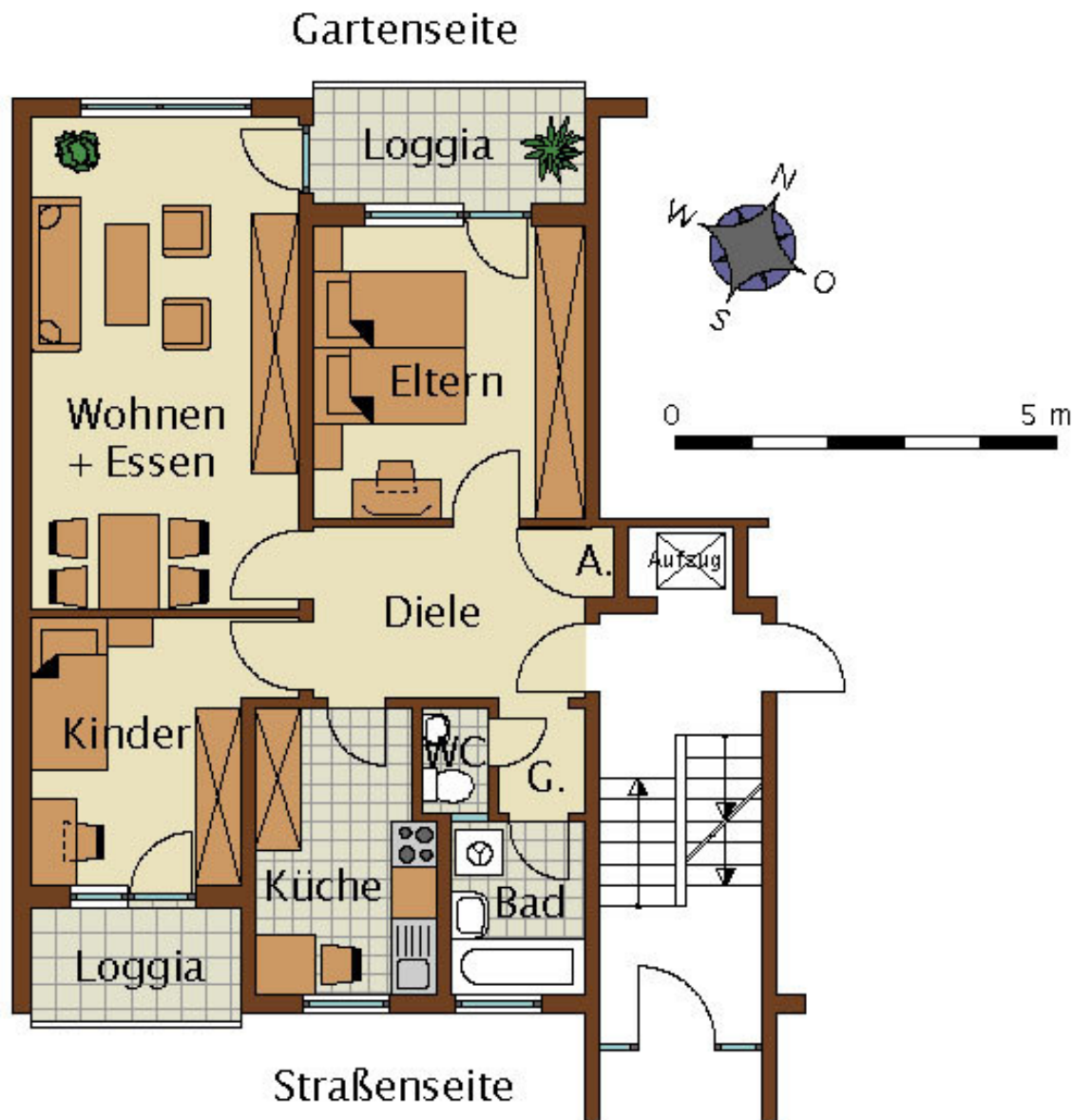


Wohnung Nr. A 11, Erdgeschoss links



Berechnung der Wohnfläche 122006, Nr. A11, EG links

Diele	$3,51 \times 2,26$	=	7,93 m ²
Garderobe	$1,05 \times 1,385$	=	1,57 m ²
WC	$0,885 \times 1,385$	=	1,23 m ²
Bad	$1,76 \times 2,26$	=	3,98 m ²
Küche	$3,76 \times 2,385 - 0,375 \times 1,50$	=	8,41 m ²
Kinder	$3,51 \times 2,76 + 0,75 \times 1,07$	=	10,49 m ²
Wohnen + Essen	$3,51 \times 6,455$	=	22,66 m ²
Eltern	$3,51 \times 3,83$	=	13,44 m ²
Loggia	$3,51 \times 1,495 \times 0,5$	=	2,62 m ²
Loggia	$2,76 \times 1,495 \times 0,5$	=	2,07 m ²
Abstellraum	$0,38 \times 0,93$	=	0,35 m ²
			<u>74,75 m²</u>
	abzüglich 3% Putz		<u>-2,24 m²</u>
			<u>72,51 m²</u>