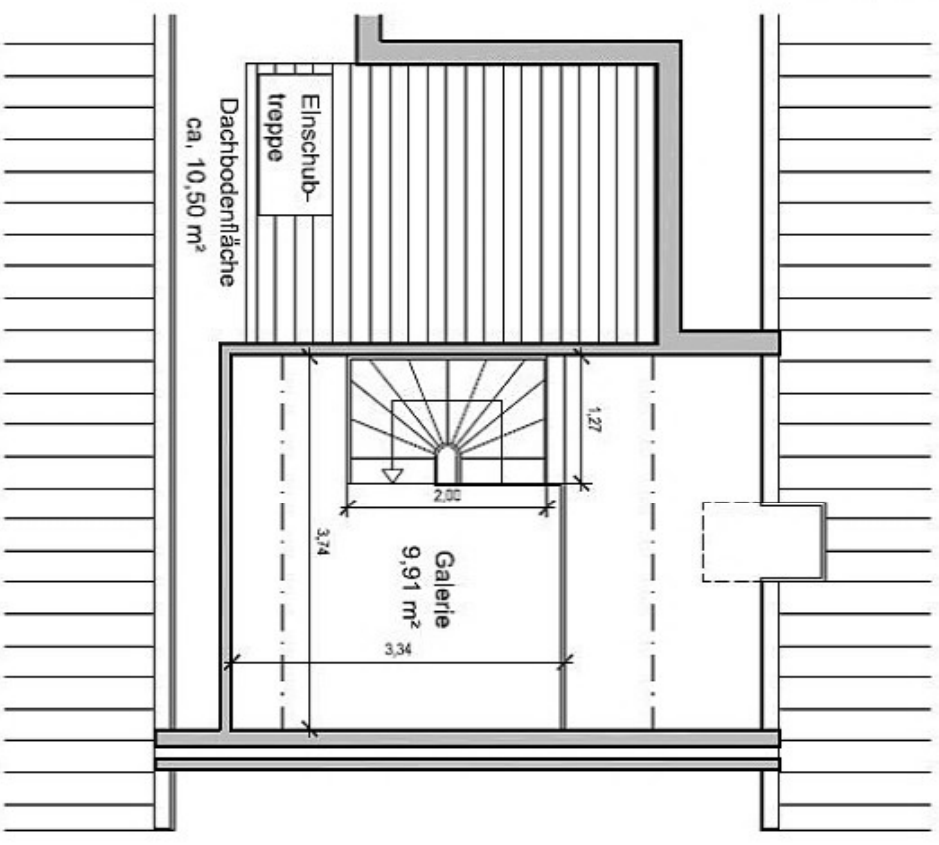


The floor plan shows a rectangular terrace area with a central square feature. The overall dimensions are 3,74 m by 3,34 m. The central square has a side length of 2,00 m. The area of the terrace is 9,91 m². A small square area of 1,27 m by 1,27 m is located in the top right corner. The terrace is bordered by a wall on the left and a wall on the right. The area is labeled 'Dachbodenfläche ca. 10,50 m²' and 'Einschub-treppe'.

79,46 m²

Whg.Nr. 172, 272, 372