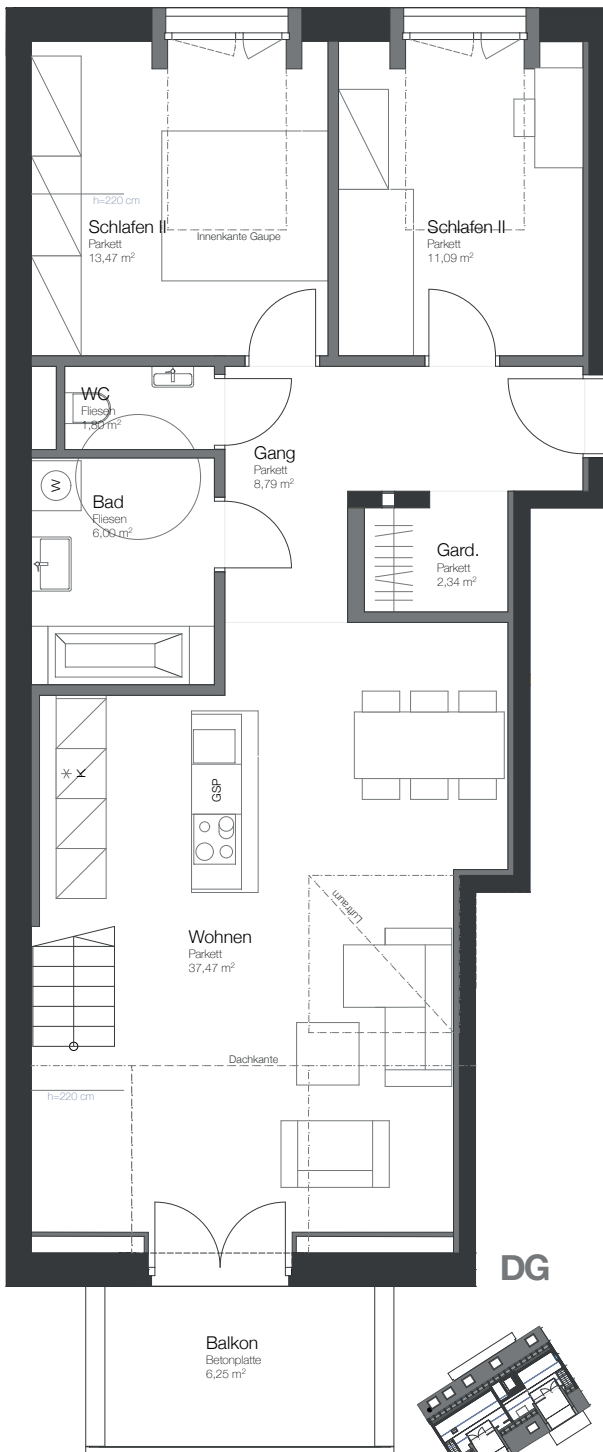
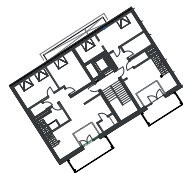
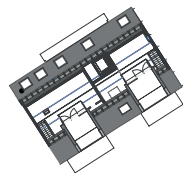
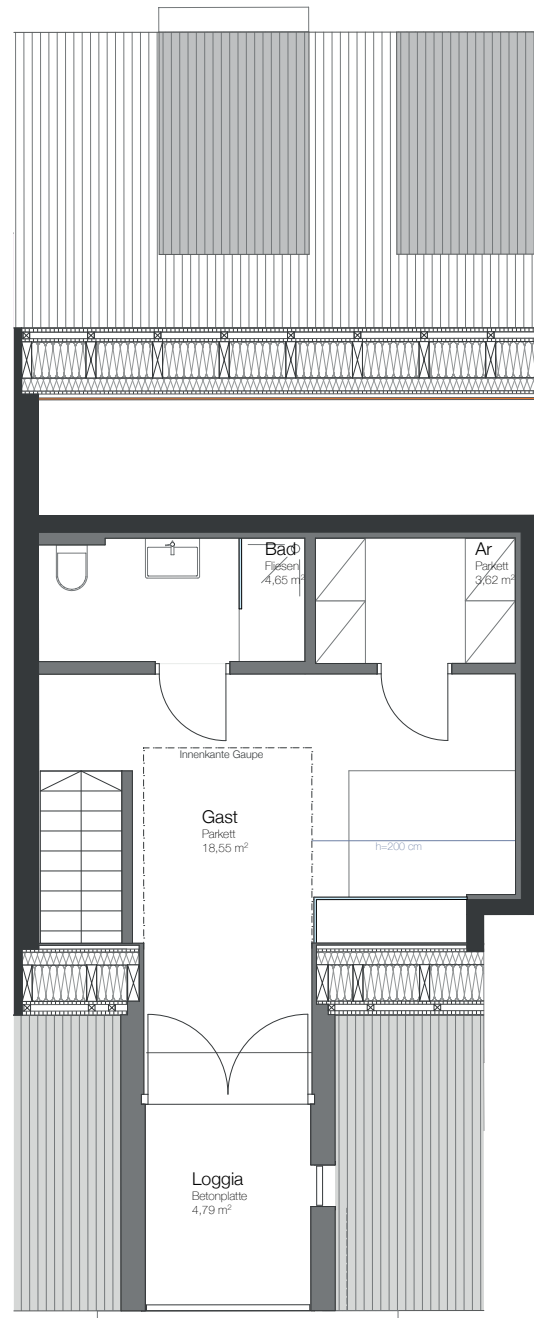


# Pillweinstraße 32

## Grundrisse.



TOP 19



DG + Empore, Top 19 -  
4 Zimmer

**Wohnfläche** 107,87 m<sup>2</sup>

Keller 3,82 m<sup>2</sup>

Balkon 6,25 m<sup>2</sup>

Loggia 4,79 m<sup>2</sup>