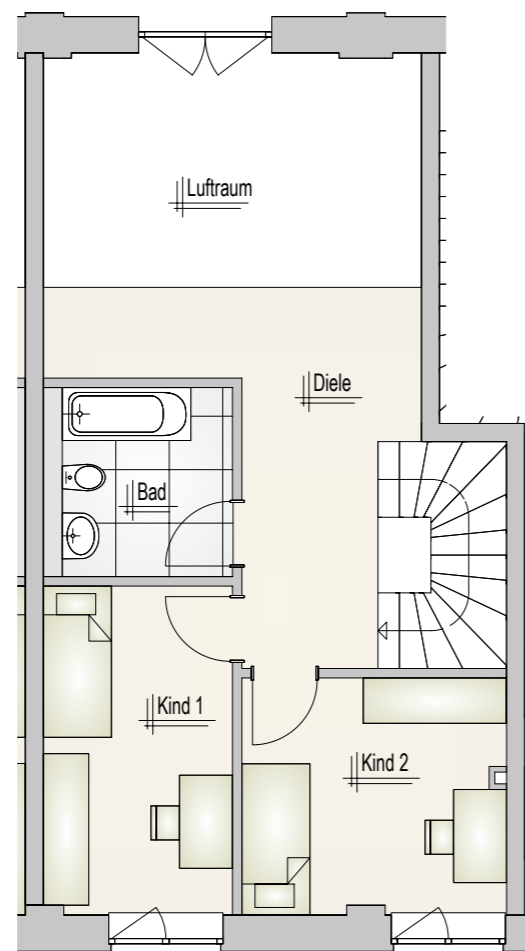
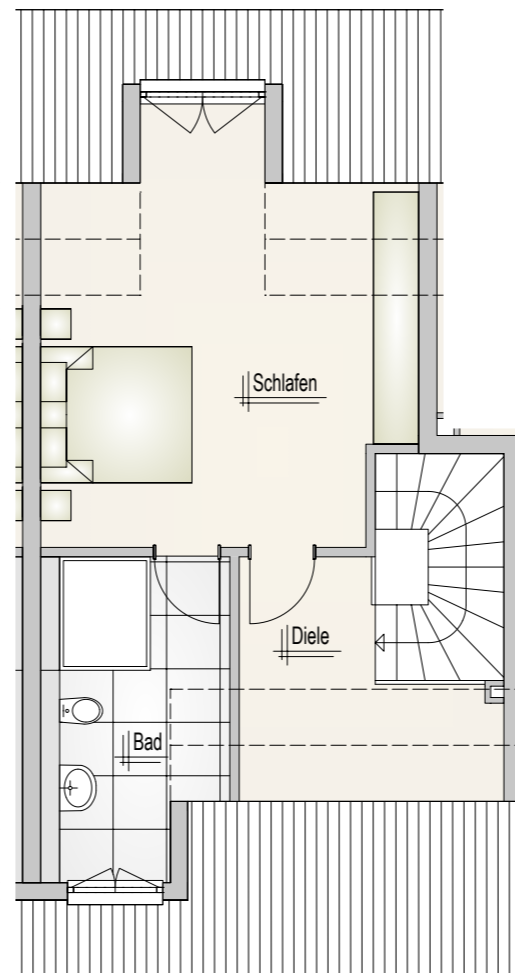


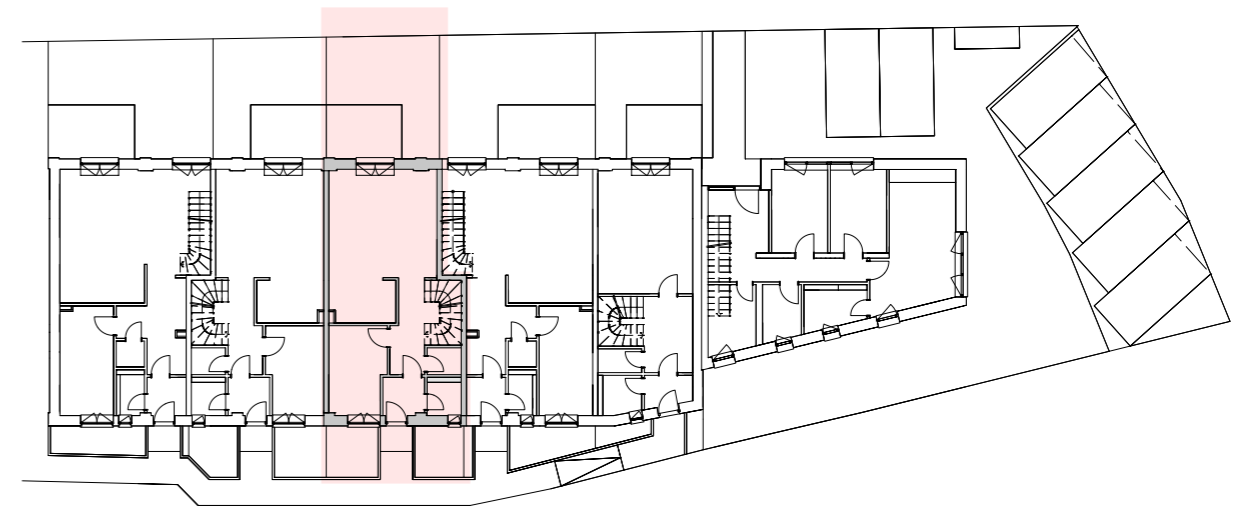
Erdgeschoss



Obergeschoss



Dachgeschoss



**Stadthaus "Grüntal" 4**

Erdgeschoss		Obergeschoss		Dachgeschoss	
Windfang	3,38 m <sup>2</sup>	Diele	13,34 m <sup>2</sup>	Schlafen	22,26 m <sup>2</sup>
WC	2,32 m <sup>2</sup>	Bad	5,53 m <sup>2</sup>	Bad	8,10 m <sup>2</sup>
Abstell	1,93 m <sup>2</sup>	Kind 1	10,77 m <sup>2</sup>	Diele	5,87 m <sup>2</sup>
Flur	8,65 m <sup>2</sup>	Kind 2	10,80 m <sup>2</sup>		
Arbeit	10,51 m <sup>2</sup>				
Kochen	5,91 m <sup>2</sup>				
Wohnen/Essen	25,08 m <sup>2</sup>				
Terrasse	4,38 m <sup>2</sup>				

**Wohnfläche 138,75 m<sup>2</sup>**

**Gartenfläche 32,10 m<sup>2</sup>**