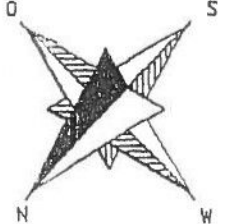
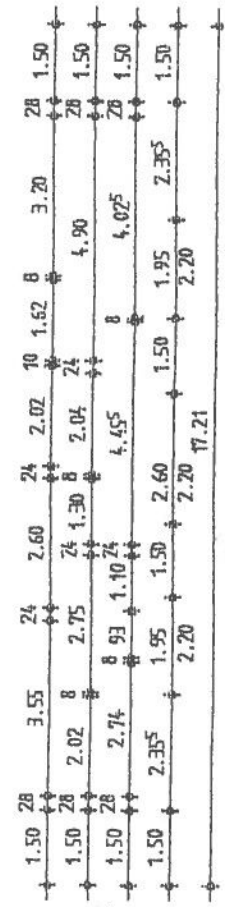
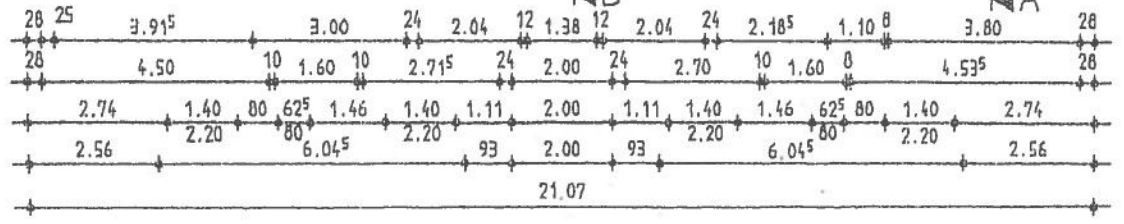
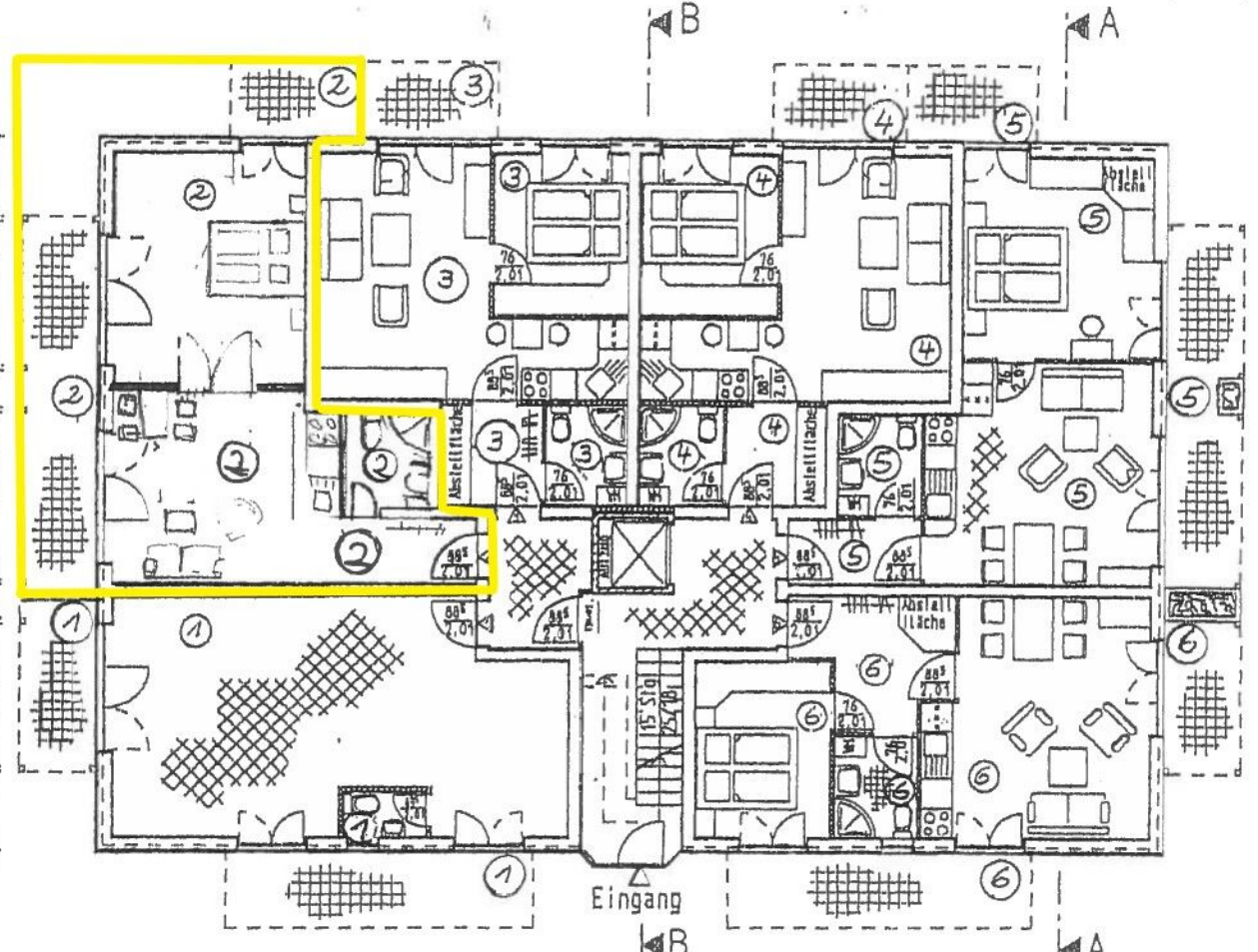
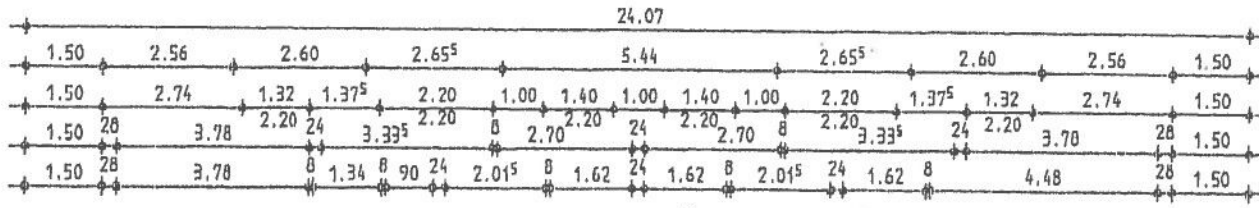
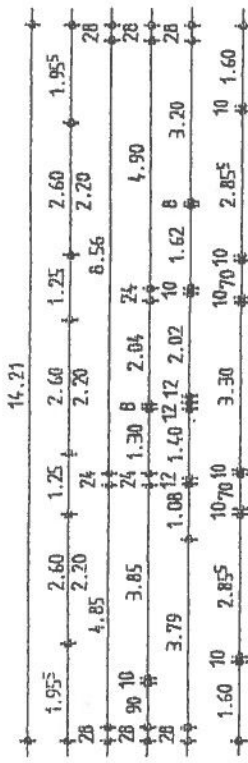


AUFTEILUNGSPLAN 3



Datum: 17.11.2004  
 LAN: SAFT RÜGEN  
 BAUAUFSICHTSBEHÖRDE



ZBO Grevesmühlen GmbH - Grüner Weg 6 - 23936 Grevesmühlen  
 Wohn- und Ferienanlage Haus 1+2  
 Am Kurpark 18586 Baabe / Rügen  
 Bearb.: Jesse gez.: Jesse geändert: 17.08.2004 M 1:150