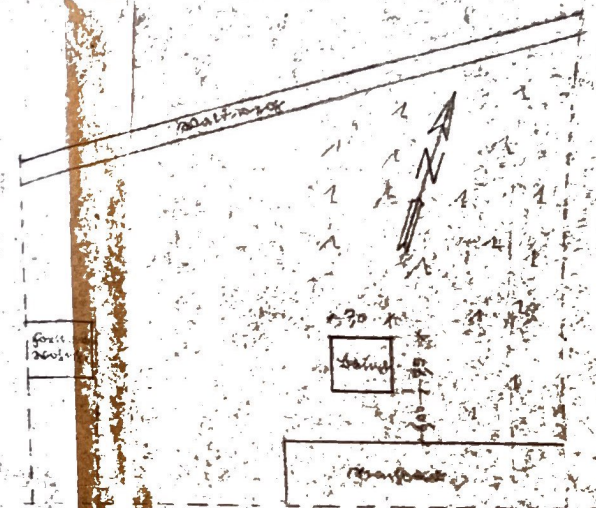
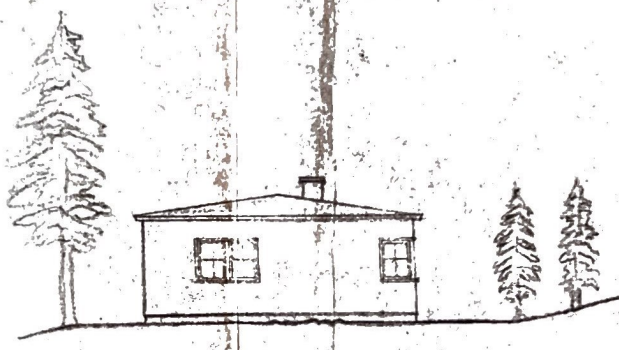
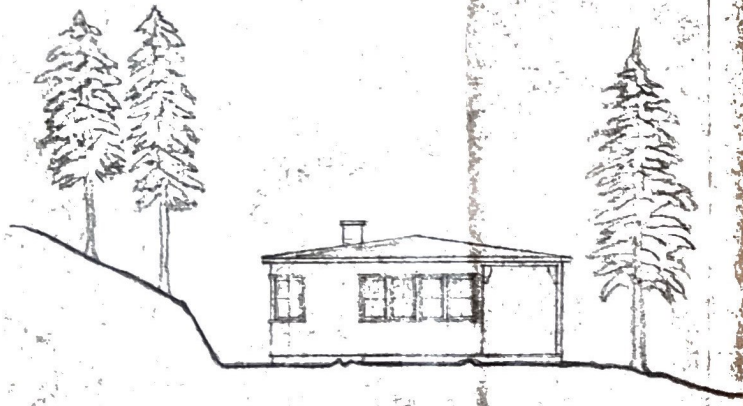
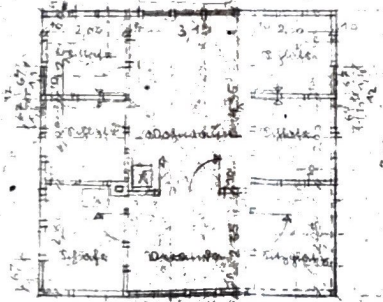


Zur Planung des Einfamilienhauses 200 qm in Holzbohlen im Obergeschoss. Maßstab 1:100

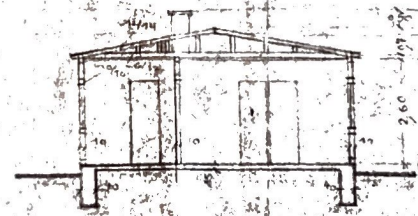
Grundriss: Holzbohlen, Dachstuhl, Keller, Garten, Terrasse



Grundriss 1:500



Grundriss



Frontansicht

10. April 1956

Otto Bosse & Söhne
Baugesellschaft
Harsgerode

10. April 1956