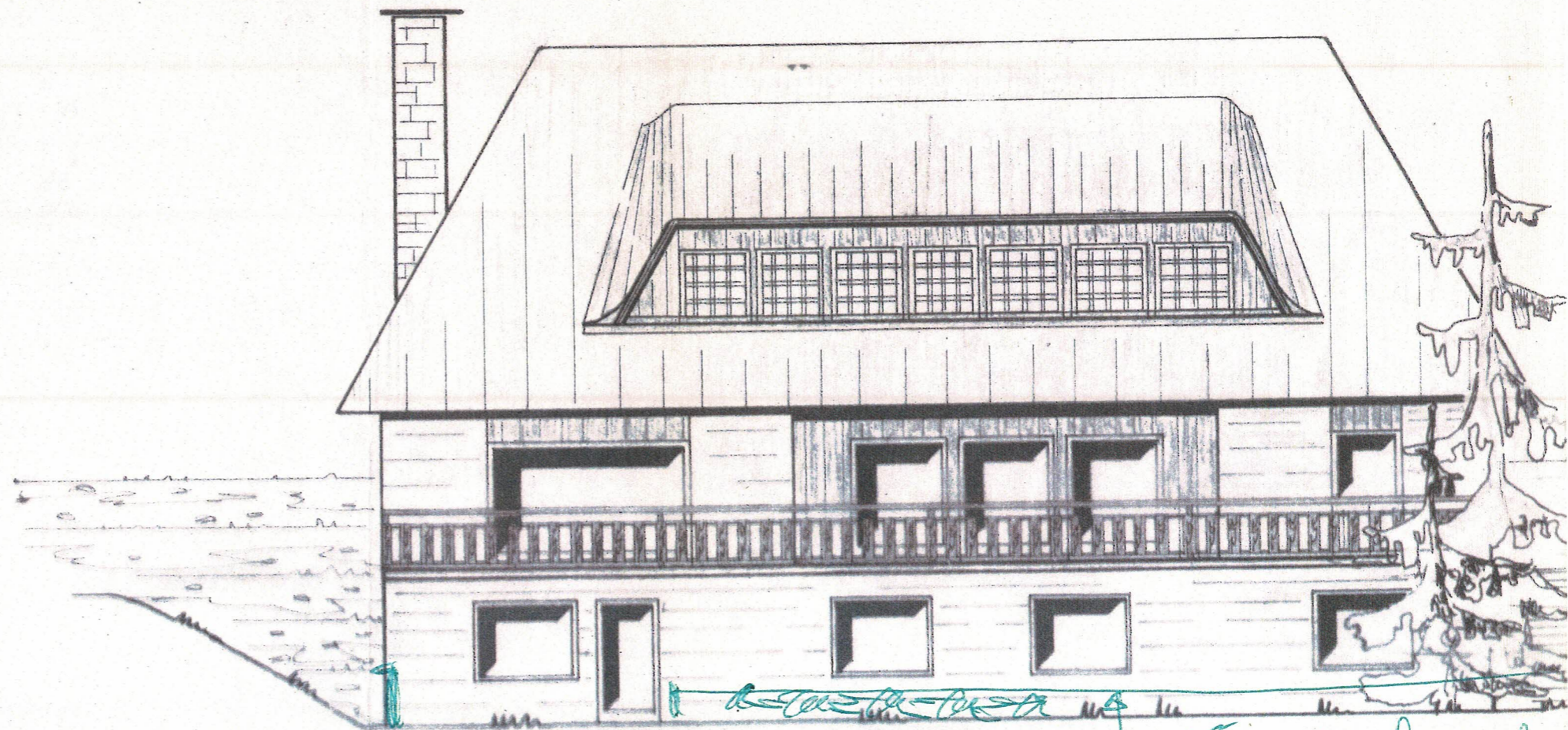


OSTANSICHT



Höhe der Fassade

# KAMPA H

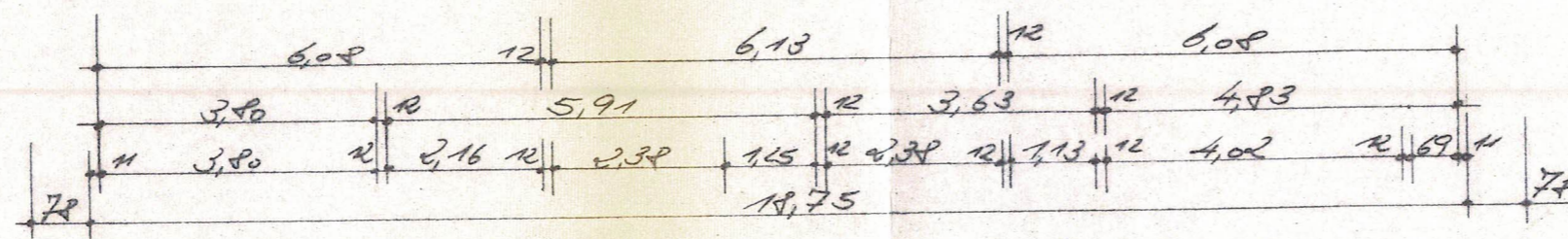
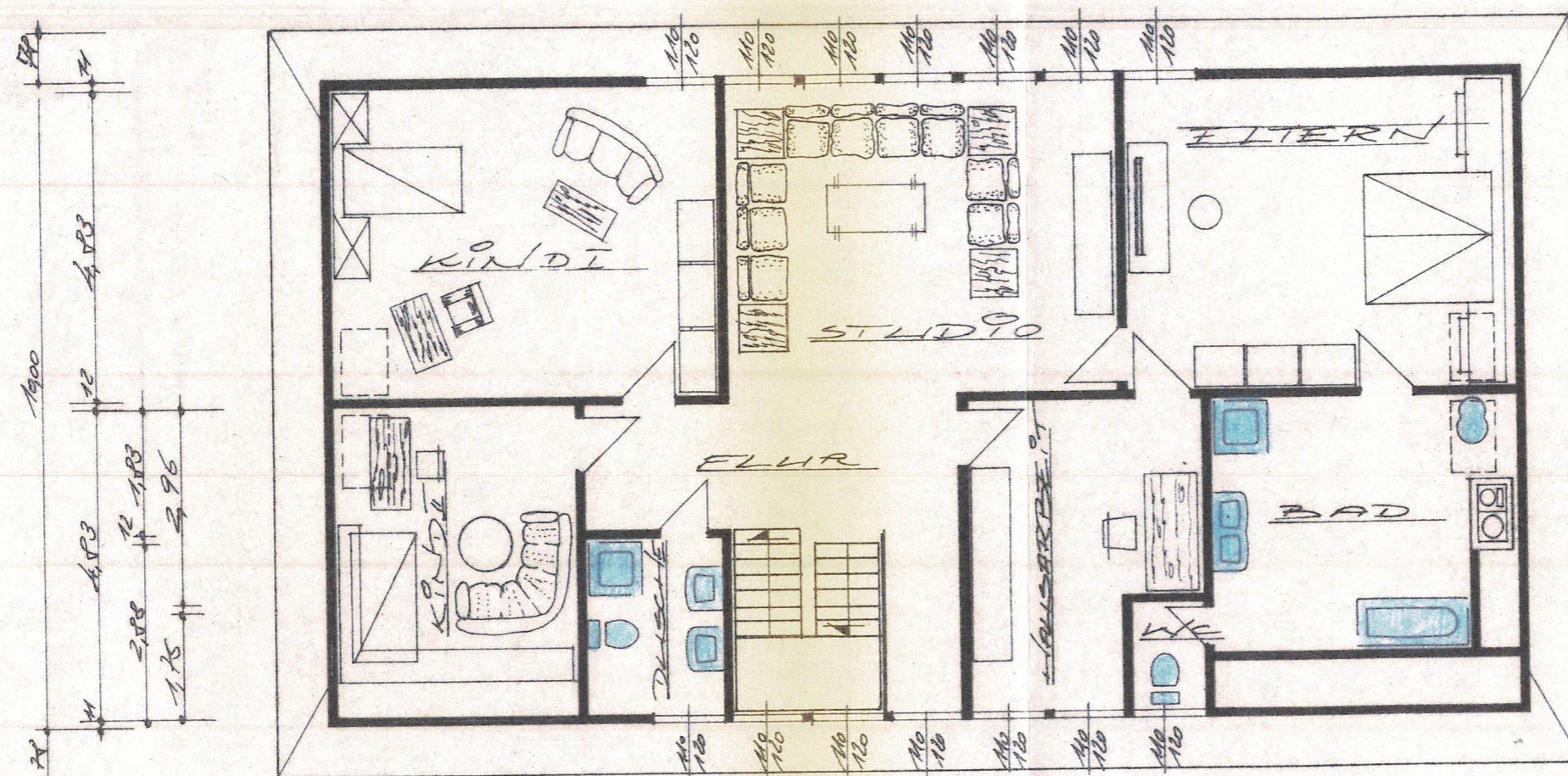
Programm 135

Der Bauherr:

*E. Gohr*

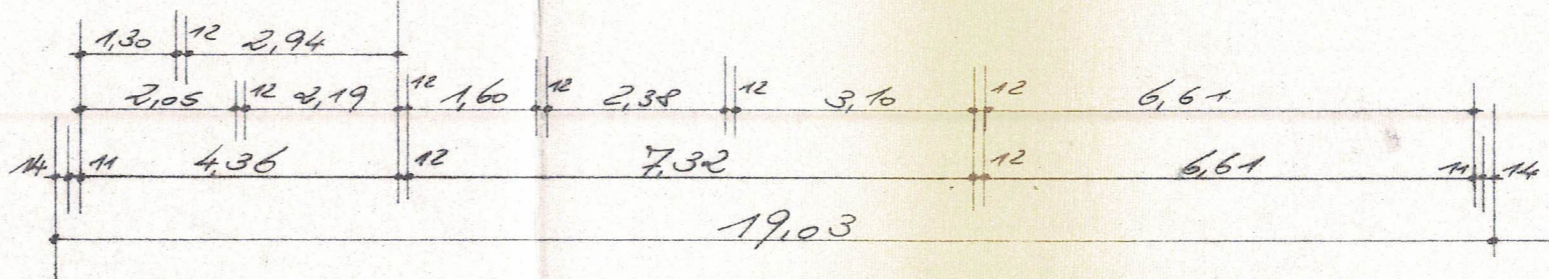
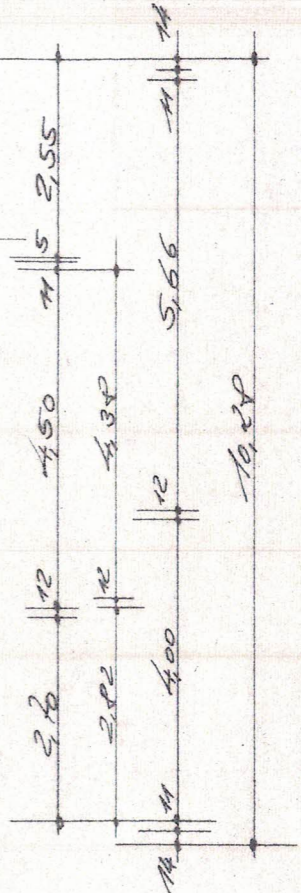
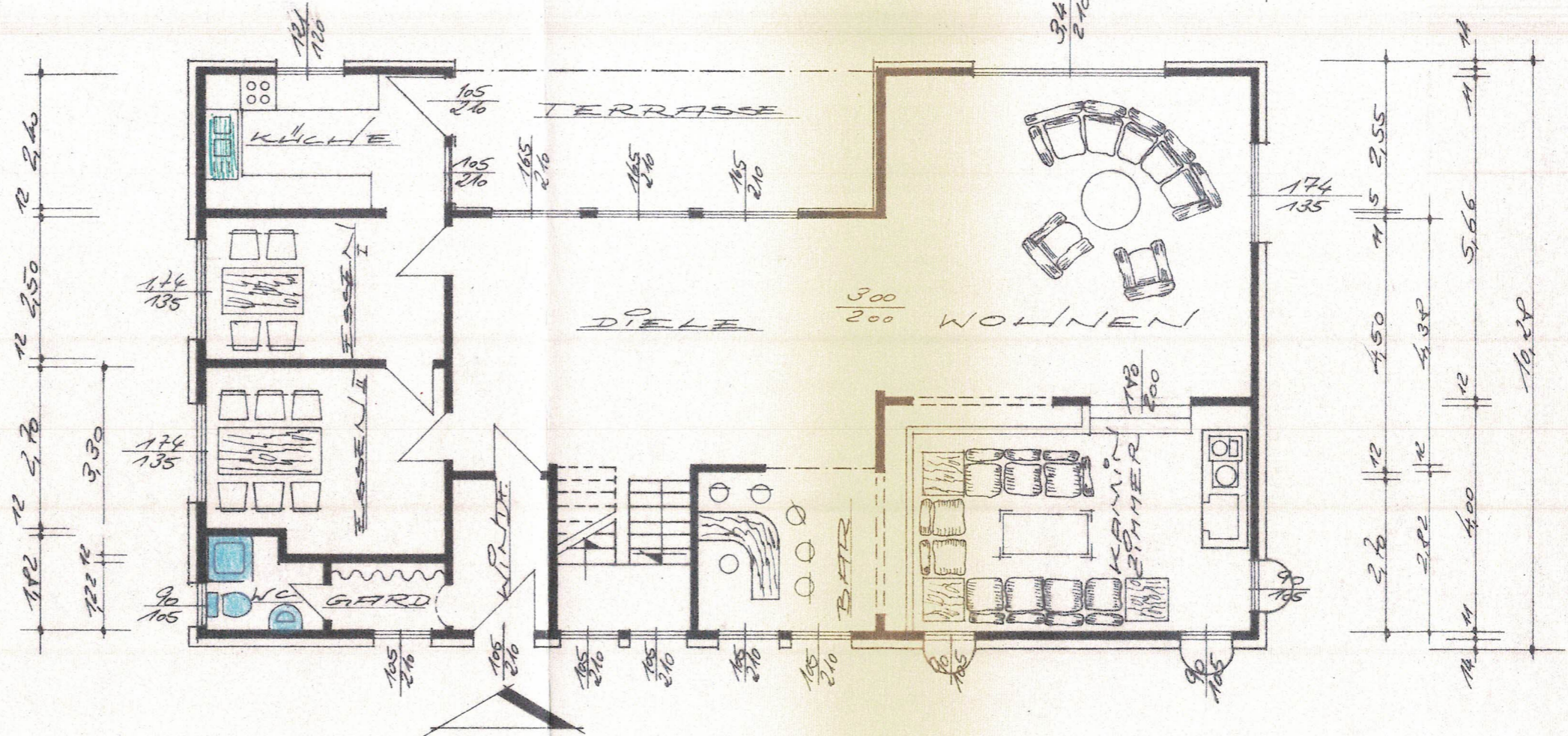
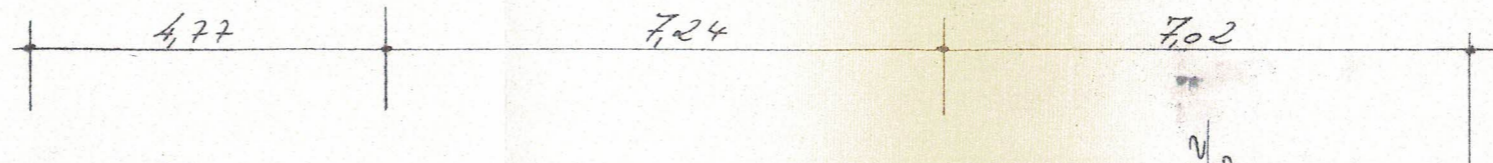
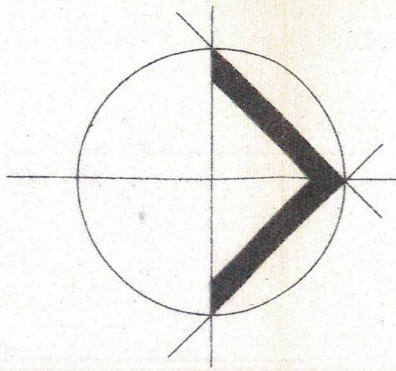
Der Architekt:

**KAMPA-I**  
Werk III K  
8831 KTN  
Industriegelände

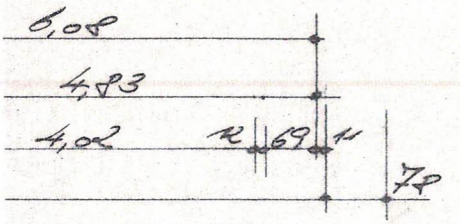
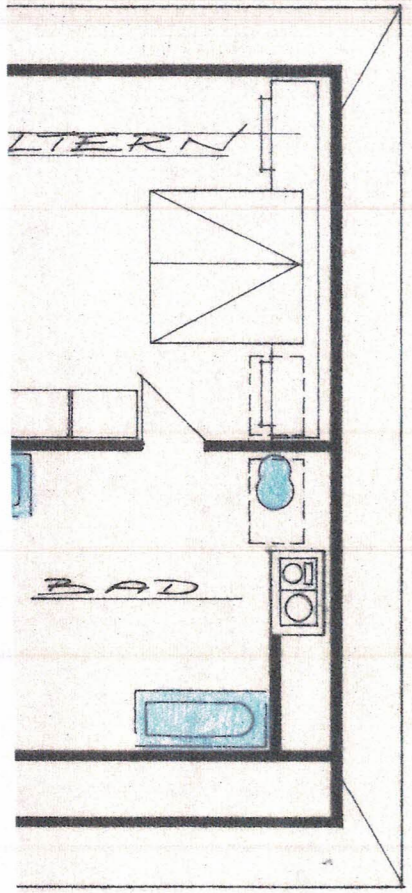


~~OBERRGESCHOSS~~

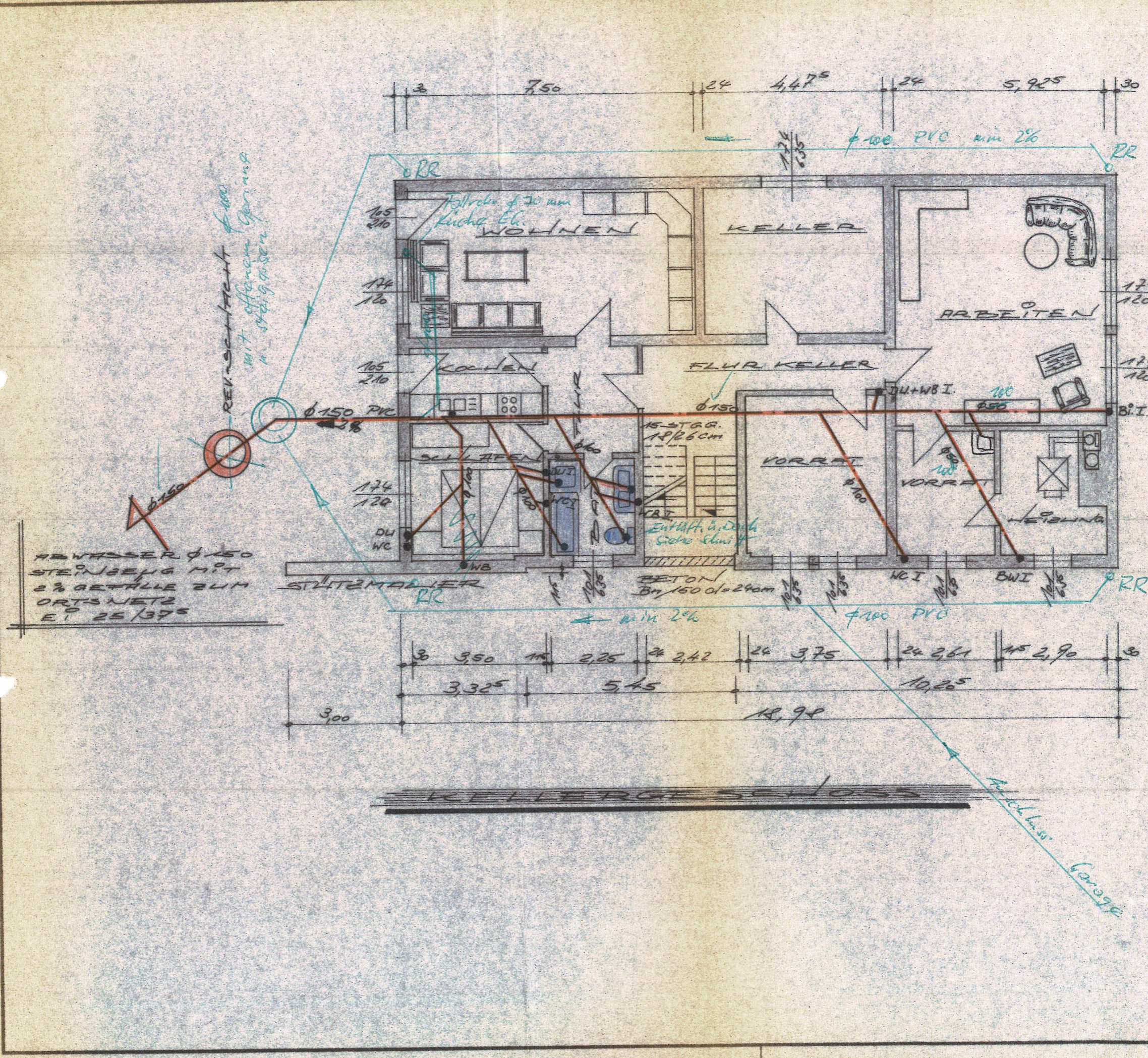
**KAMPA**  
WERK I  
495 MINDEN 1 · UF  
TELEFON 0571/5206  
POSTFACH 28  
BAUVORHABEN:  
BAUORT:  
MASSTAB:  
1:100  
GEZEICHNET:  
FRANKENFELD  
GEANDERT:



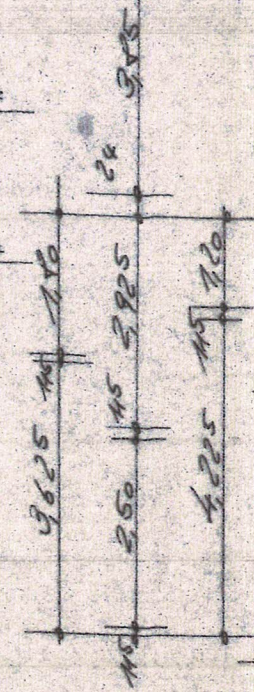
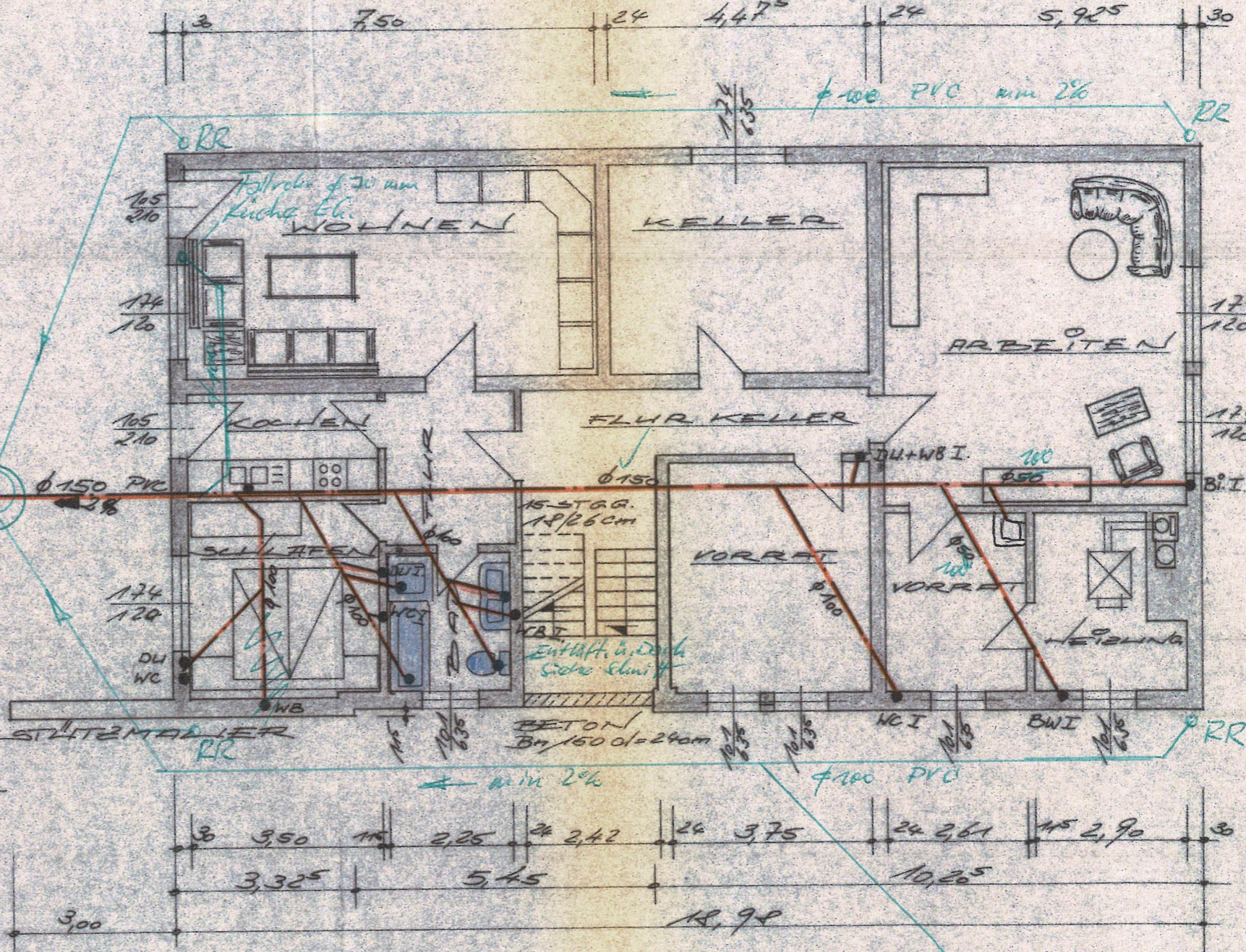
**EDGE SCHLOSS**



Beim Aus-  
zu W  
Bestimmun  
Schallschu



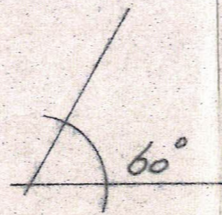
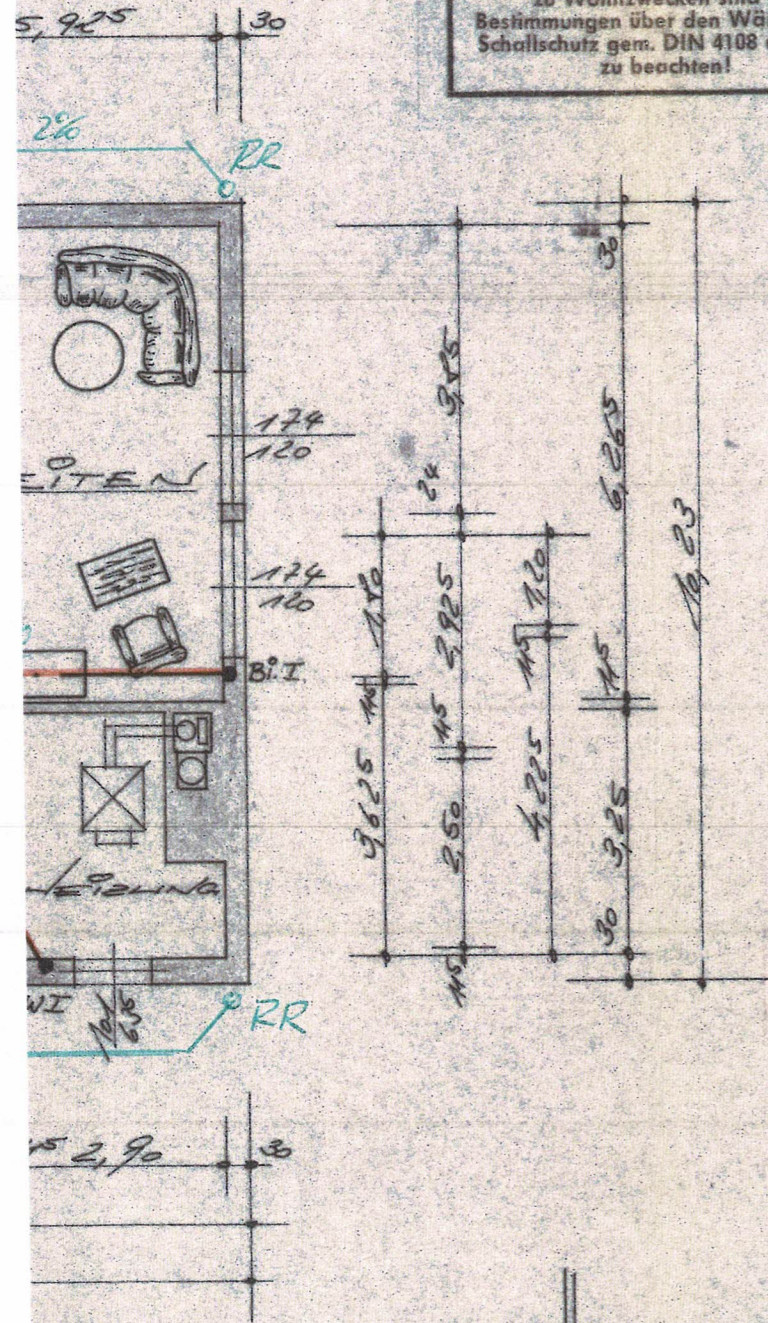
ANWASSER Ø 150  
STEINBELIG MIT  
2% GEFÄLLE ZUM  
ORTSNETZ  
EI 25/375



~~KELLERGESCHOSS~~

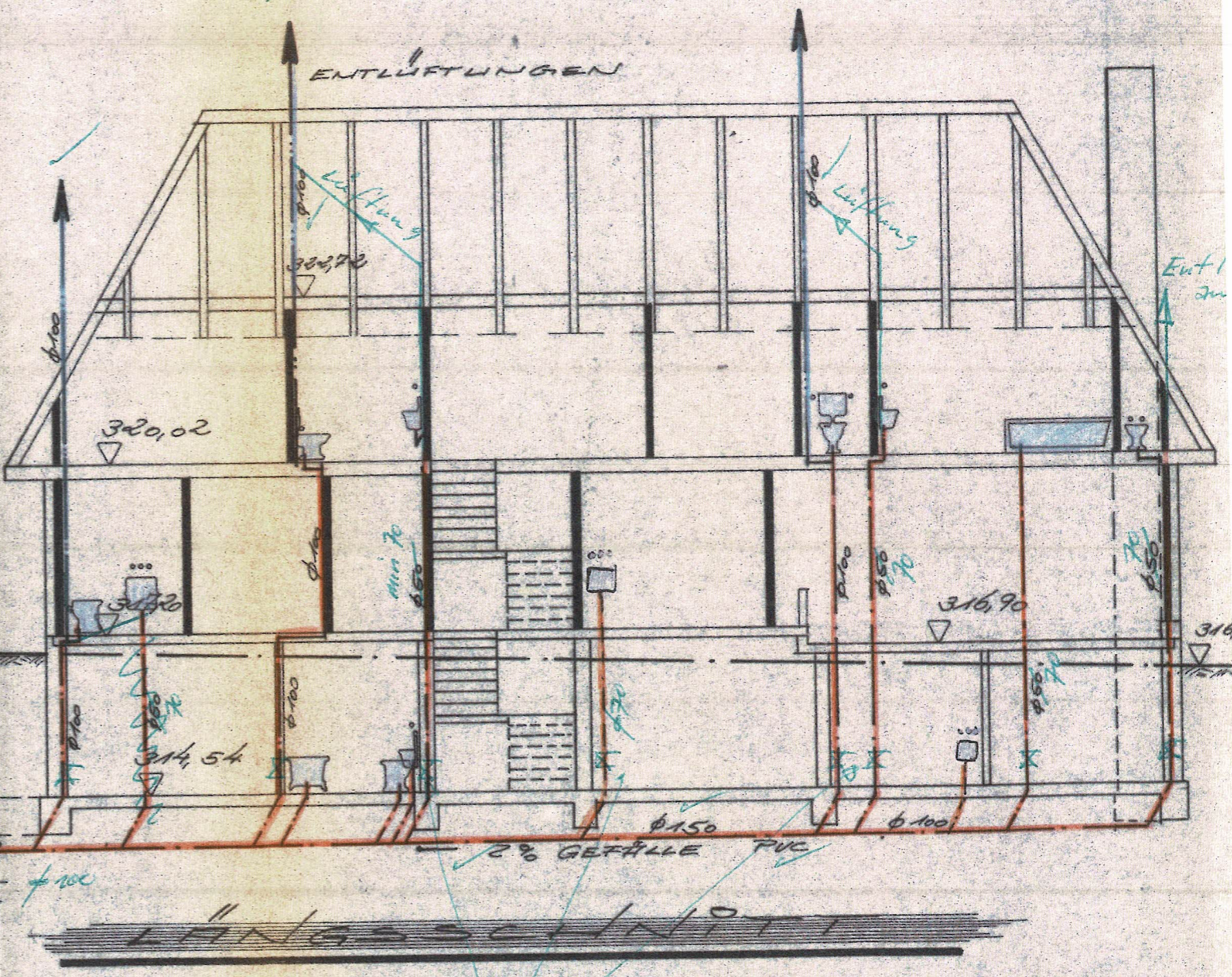
Beim Ausbau des Kellergeschosses zu Wohnzwecken sind die Bestimmungen über den Wärme- und Schallschutz gem. DIN 4108 und 4109 zu beachten!

Grundleitungen mindestens  $\phi 100$  mm!  
Fallleitungen für Schmutzwasser mindestens  $\phi 70$  mm!



ABWASSER  $\phi 150$   
STEINBELAG ZUM  
ORTSNETZ E: 35/375  
EINLAUFHÖHE 313,25m NN

REV.-SCHICHT  
SCHICHT-SOTHE  
313,60 m NN



In allen Fallrohren Putzstücke!