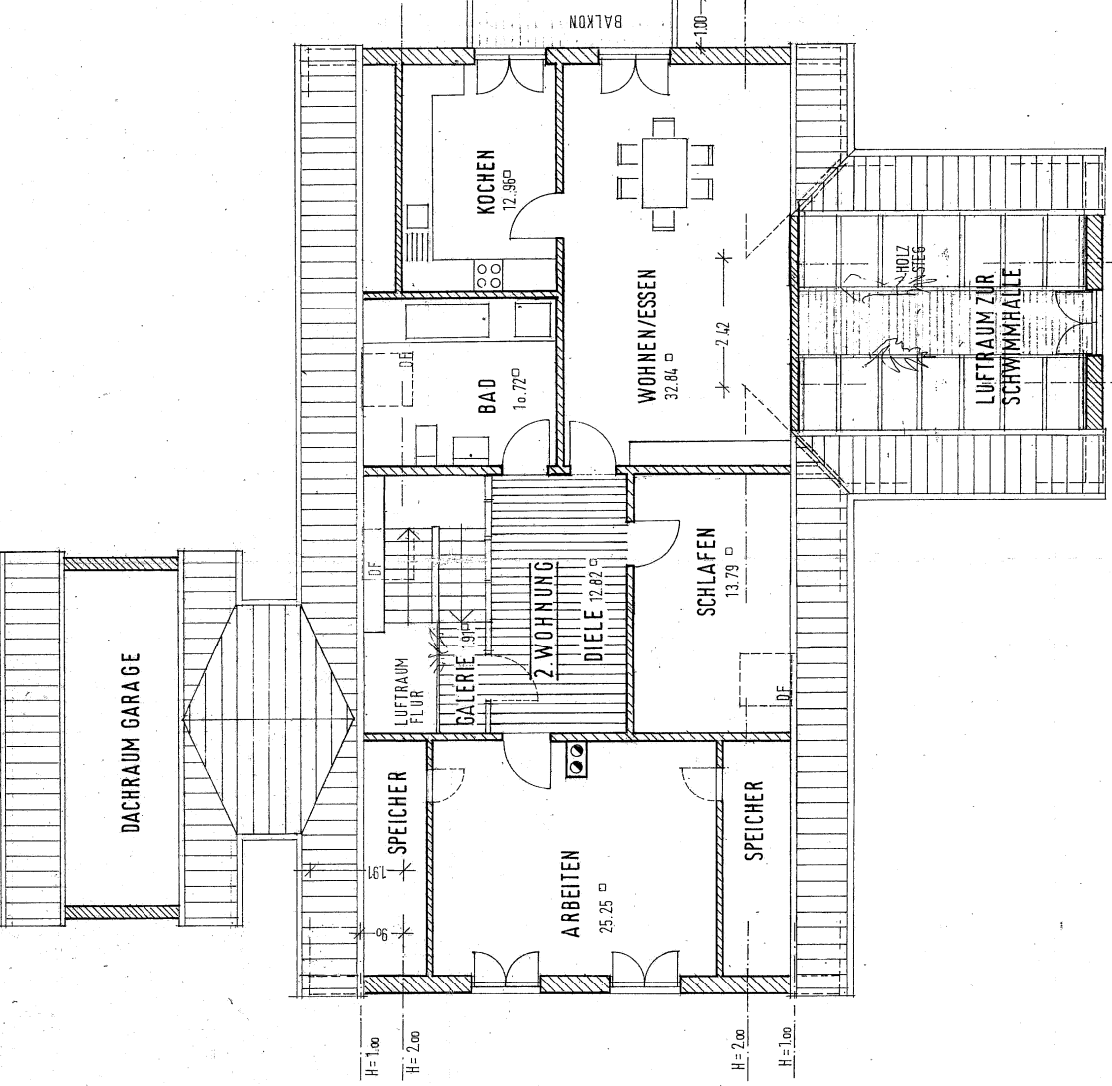


18.24
 4.52 1.15 2.12 2.82 3.26 1.15 4.385 3.65

Brandwand gemäß Art. 29 BayBo



10.365
 6.00 4.25 2.245 1.15 5.645 2.245 1.15

10.365
 4.00 1.15 2.84 1.15 4.49 1.15 0.95 1.15 4.635 3.65

18.24
 9.75 4.52 1.15 4.94 6.24 7.76 2.25 3.65

DACHGESCHOSS