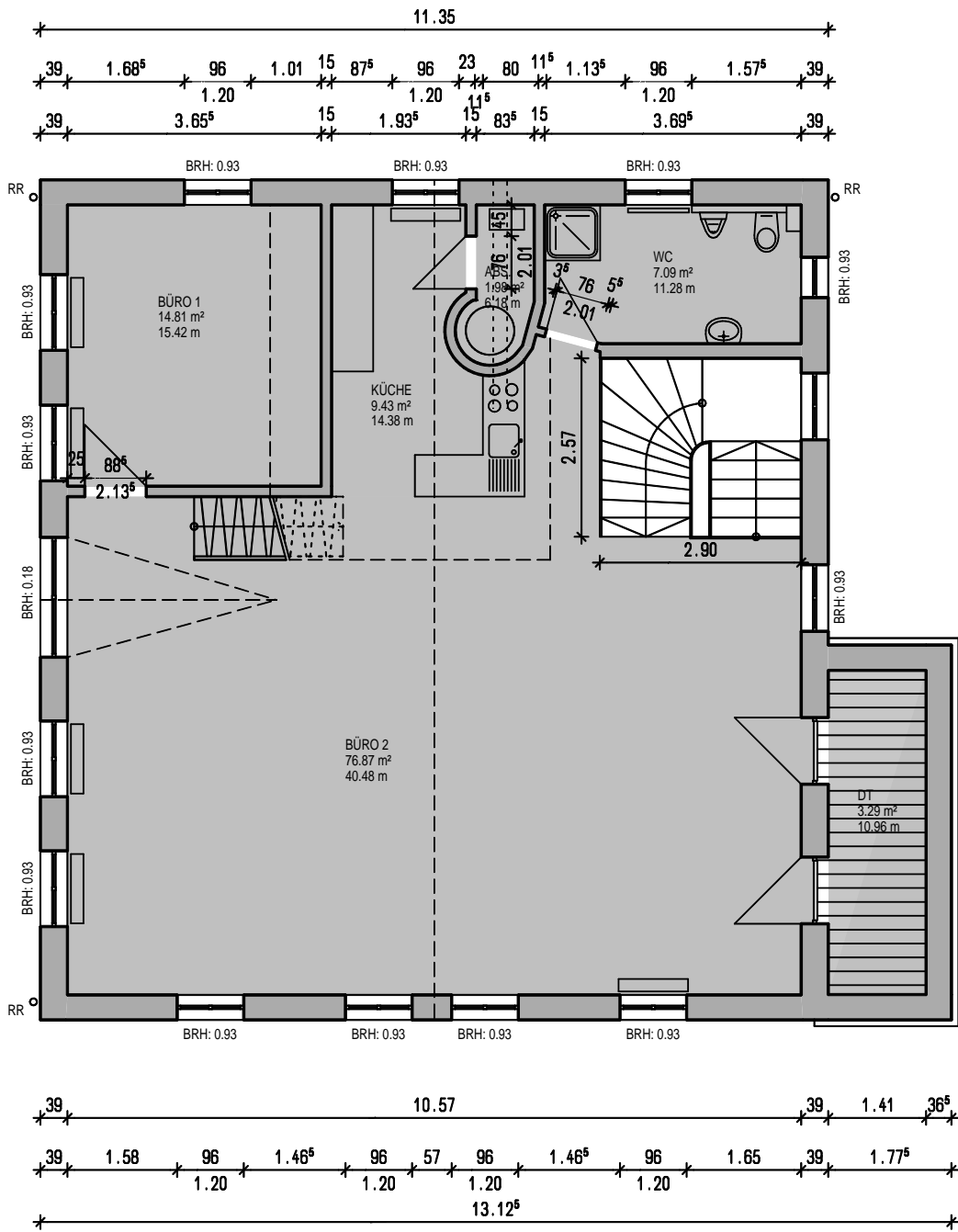
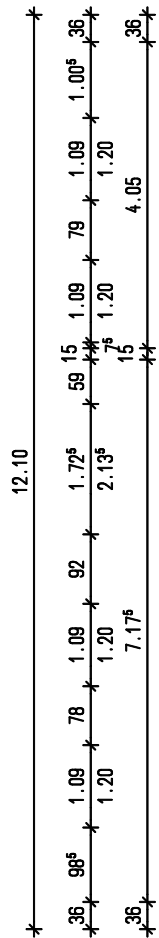


FLÄCHE GEWERBE 3:

ABSTELL	1,99
BÜRO 1	14,81
BÜRO 2	76,86
DACHTER.	3,29
KÜCHE	9,43
WC	7,09

GES.	113,47 m ²



Datum: 05.07.2006
 Masstab: 1 : 100
 Drehergasse 20 DG