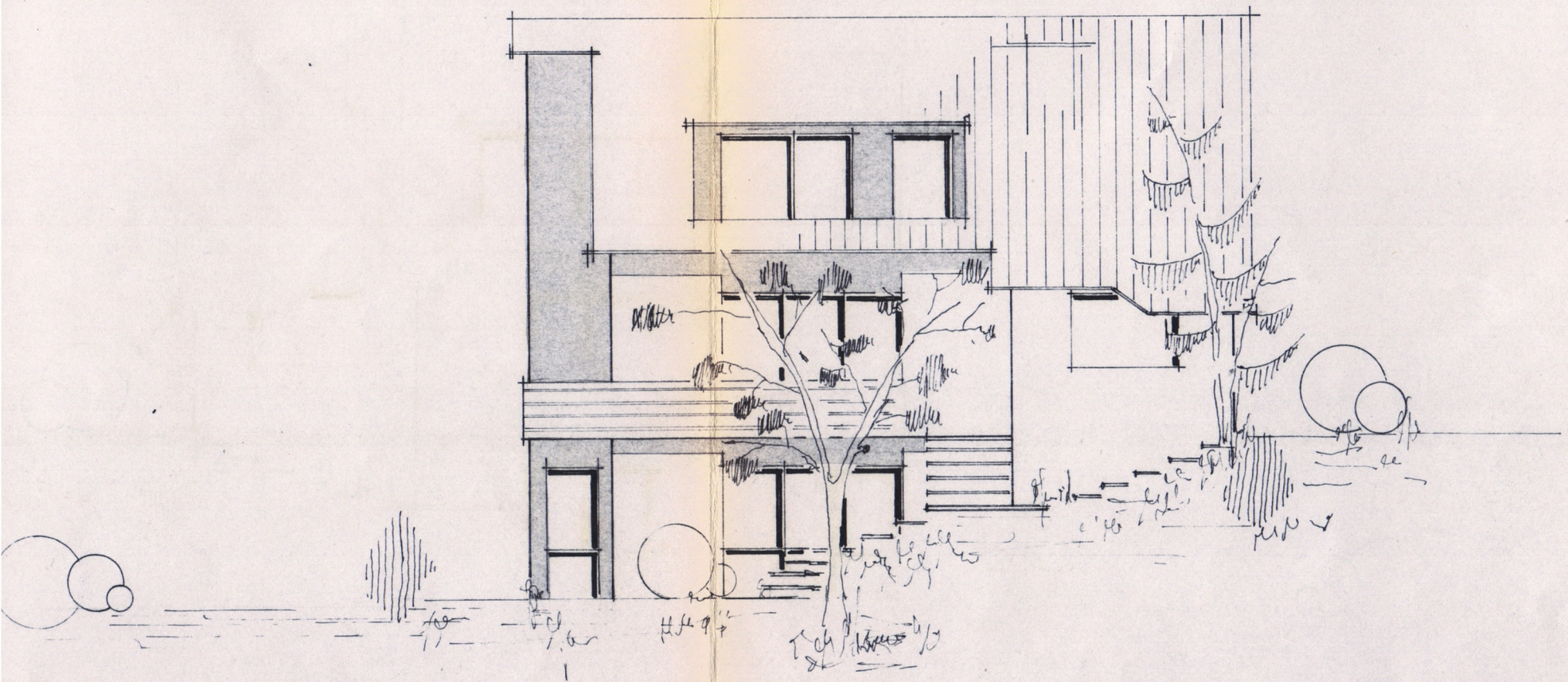
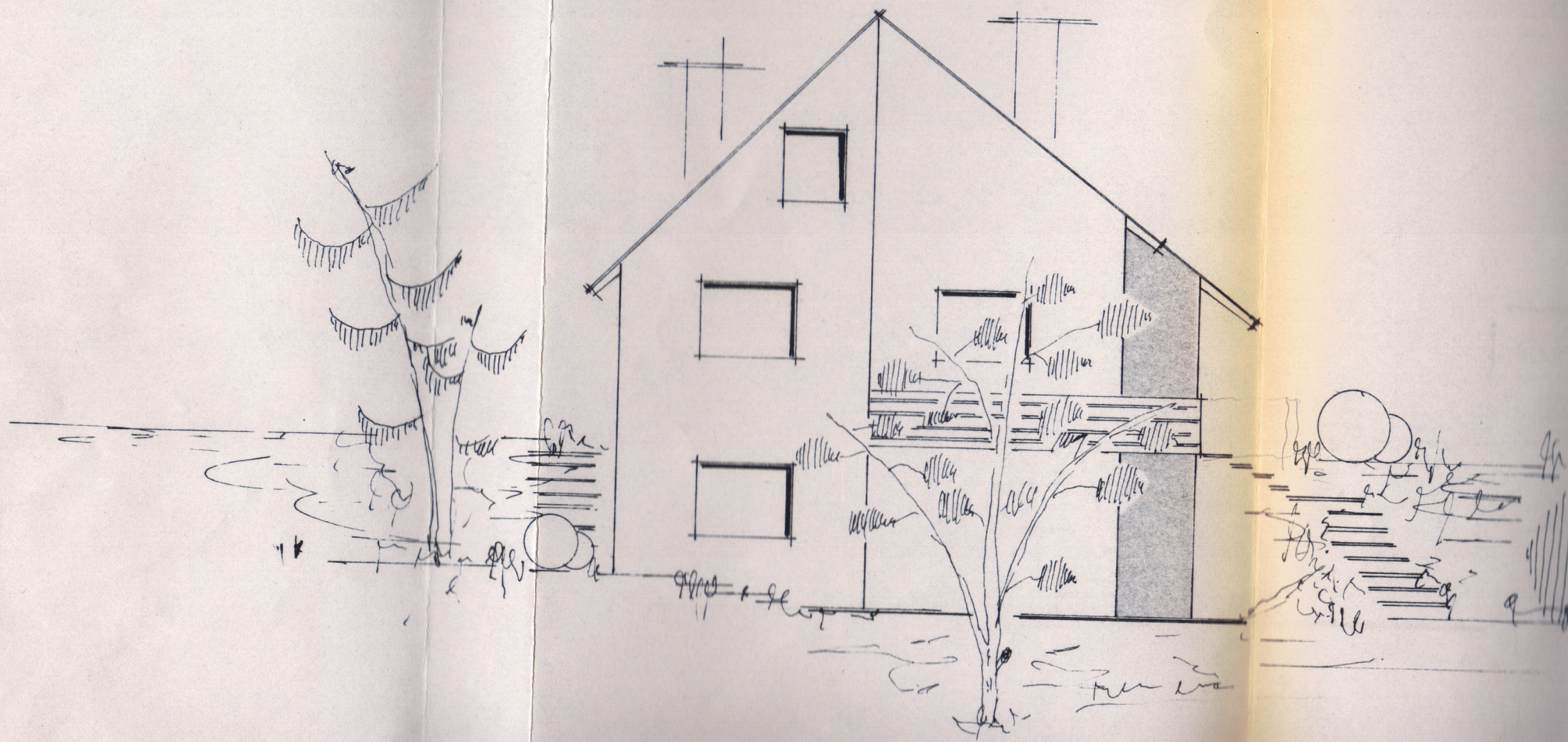
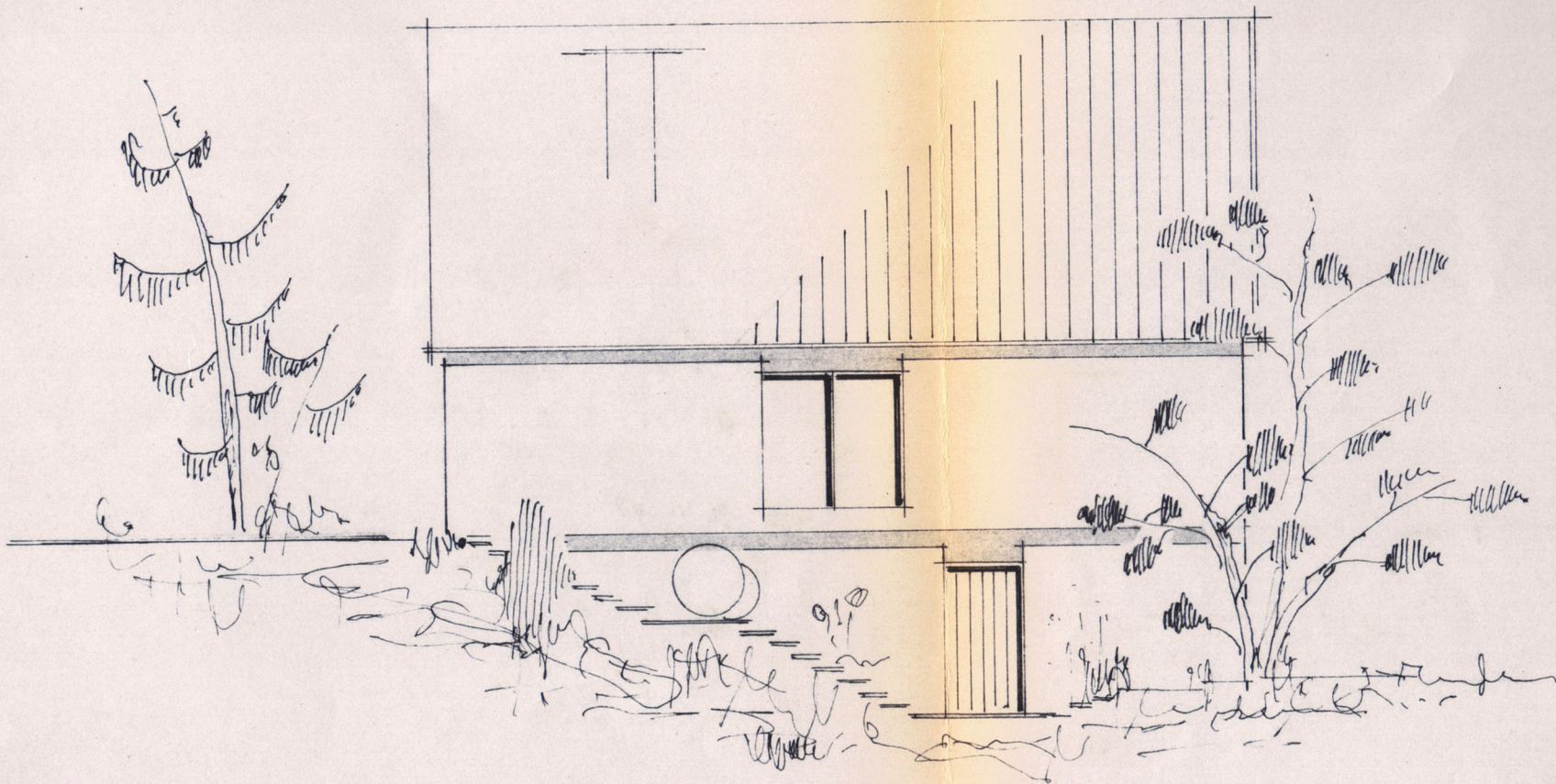


o s t - a n s i c h t







n o r d - a n s i c h t

11 48⁵

30 115 24 24 30
301 126 301 301

170

zugang -
einliegerwohnung

30

351

158

24

251

30

184
115
176
115
126

terrasse

kochn.

abst.r.

hobby -
raum

terrasse

wohn-
schl.
raum

flur

wc
dusche

keller -
flur

heiz-
raum

ca 4000 l

öllager

keller-
raum

30

115

115

470

30

201

251

975

30

131

30

632⁵

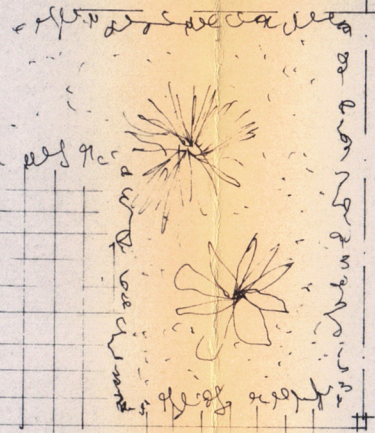
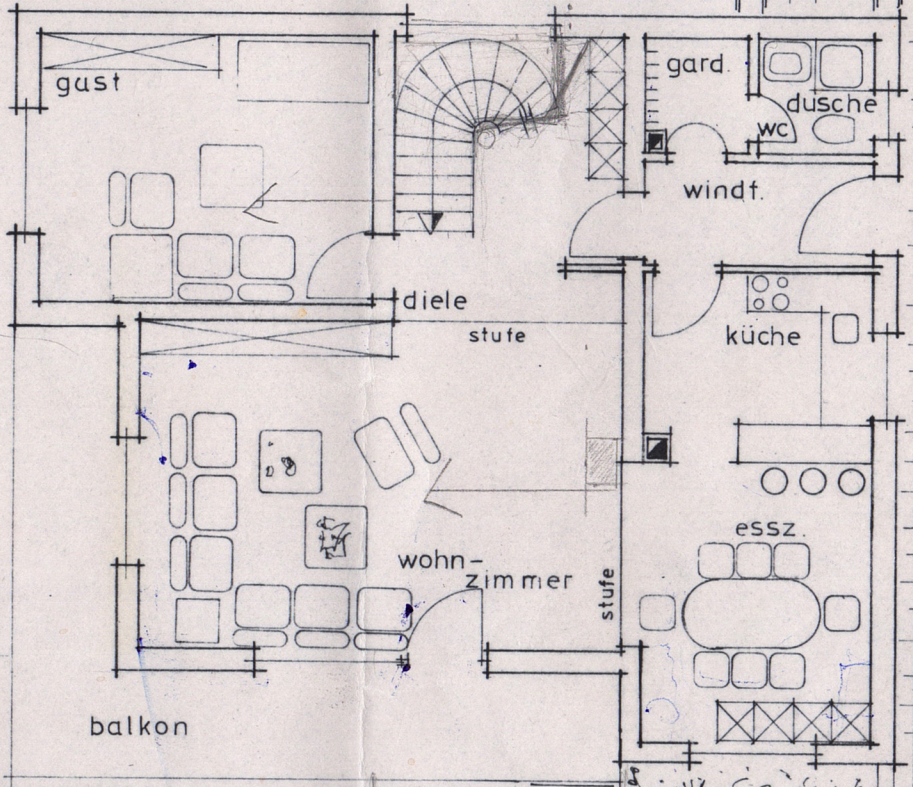
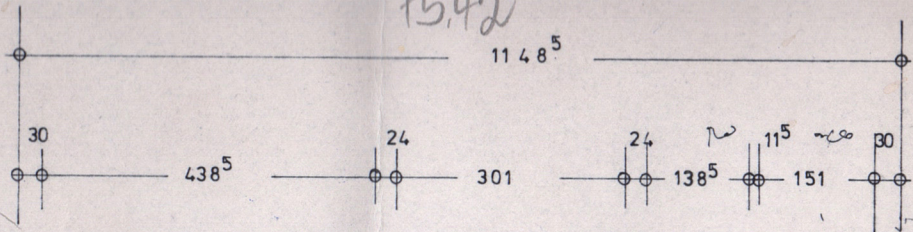
24

301

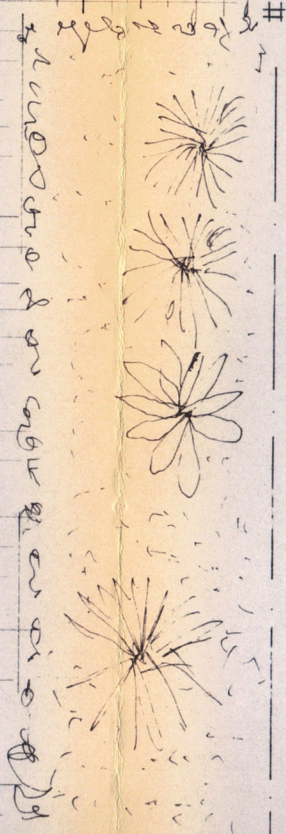
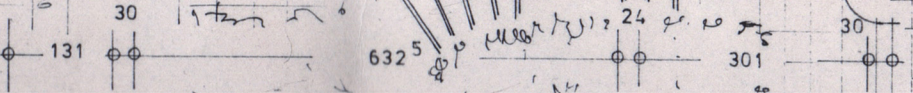
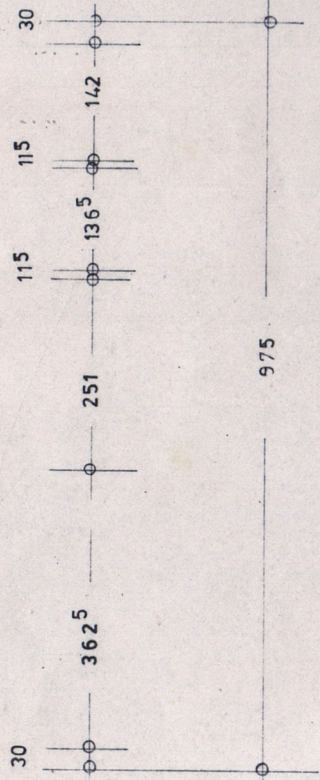
30

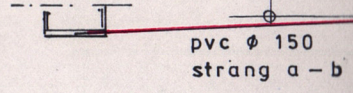
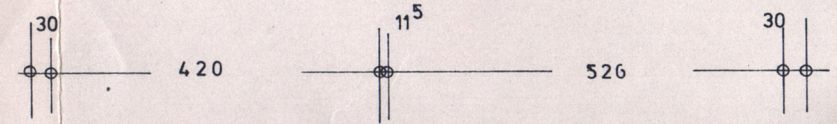
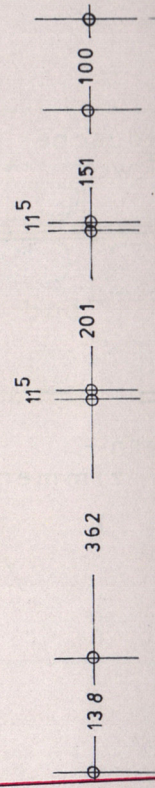
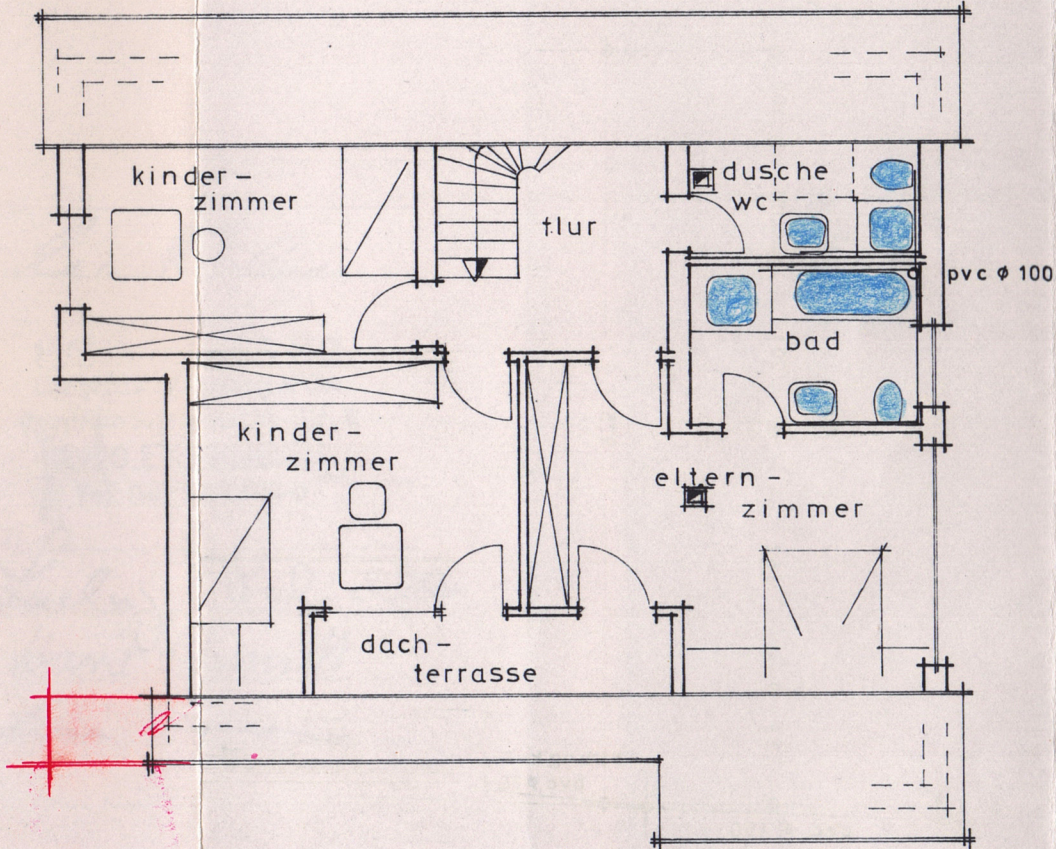
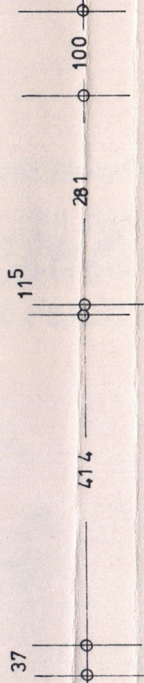
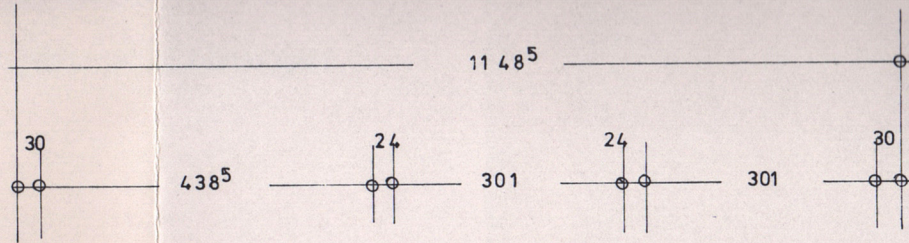
Diele 330 x 400 = 75,42

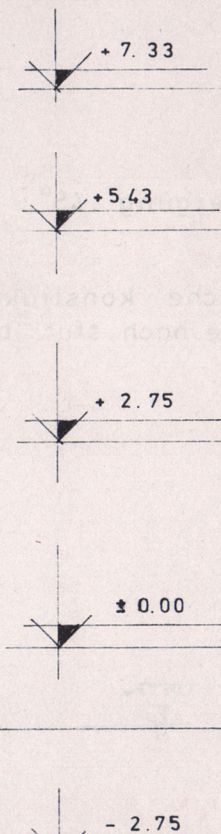
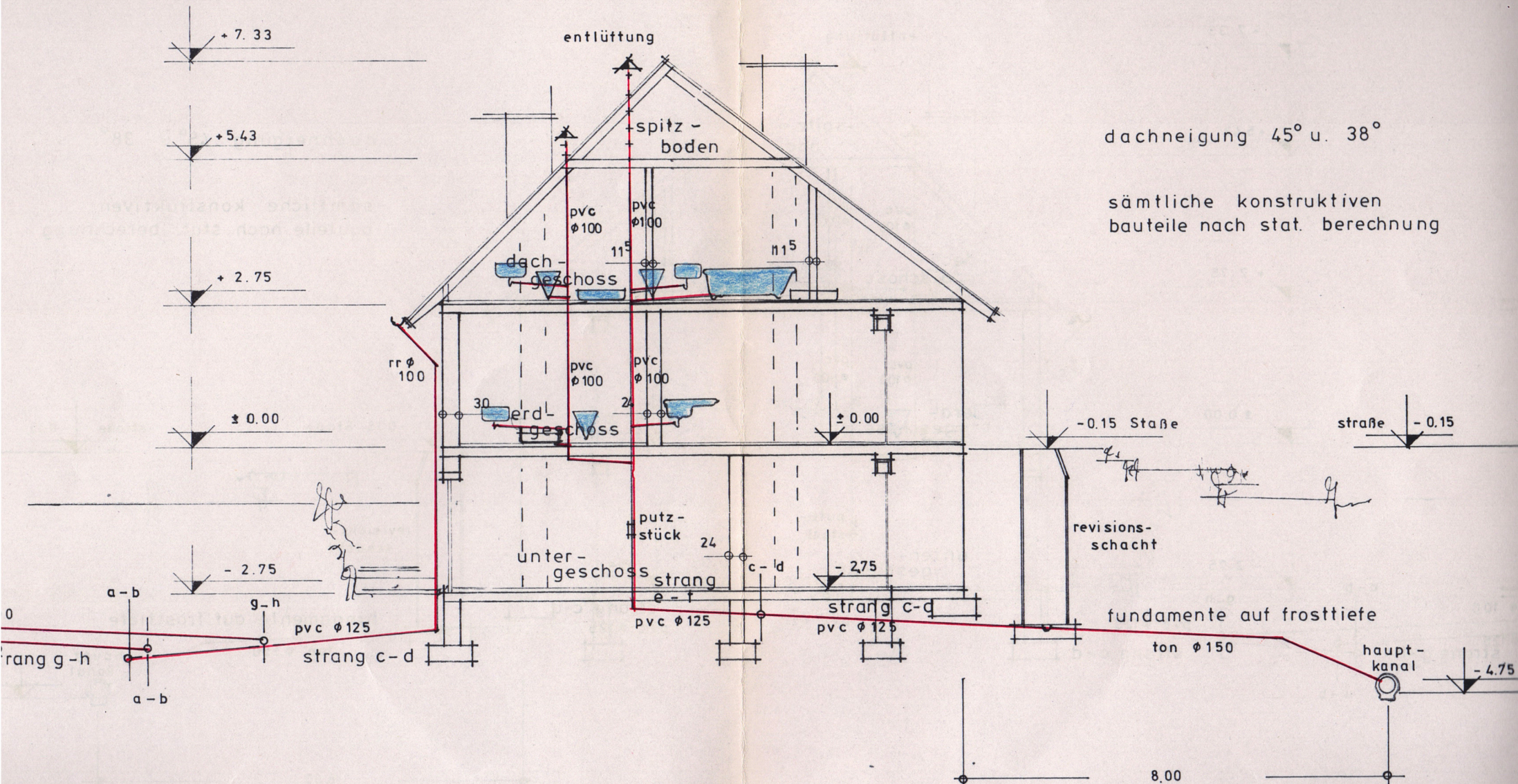
75,42



eingang







dachneigung 45° u. 38°

sämtliche konstruktiven bauteile nach stat. berechnung

schnitt

8.00

-4.75

straße -0.15

-0.15 Staße

revisions-schacht

fundamente auf frosttiefe

ton ø 150

haupt-kanal

strang c-d

pvc ø 125

unter-geschoss

pvc ø 125

putz-stück

24

erd-geschoss

pvc ø 100

24

dach-geschoss

pvc ø 100

11.5

spitz-boden

entlüftung

rr ø 100

pvc ø 125

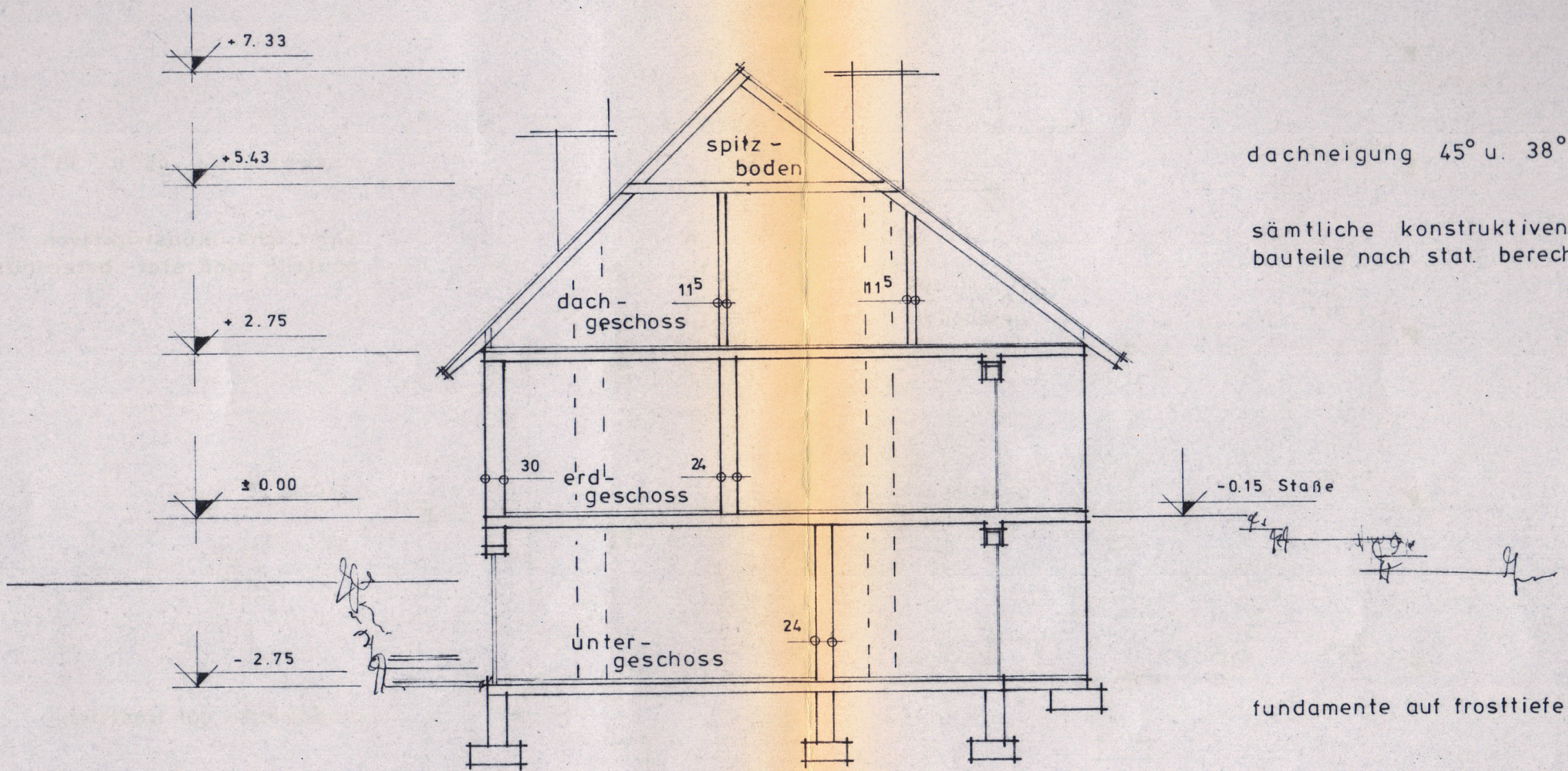
strang c-d

strang g-h

a-b

g-h

a-b



dachneigung 45° u. 38°

sämtliche konstruktiven bauteile nach stat. berechnung

fundamente auf frosttiefe

s c h n i t t