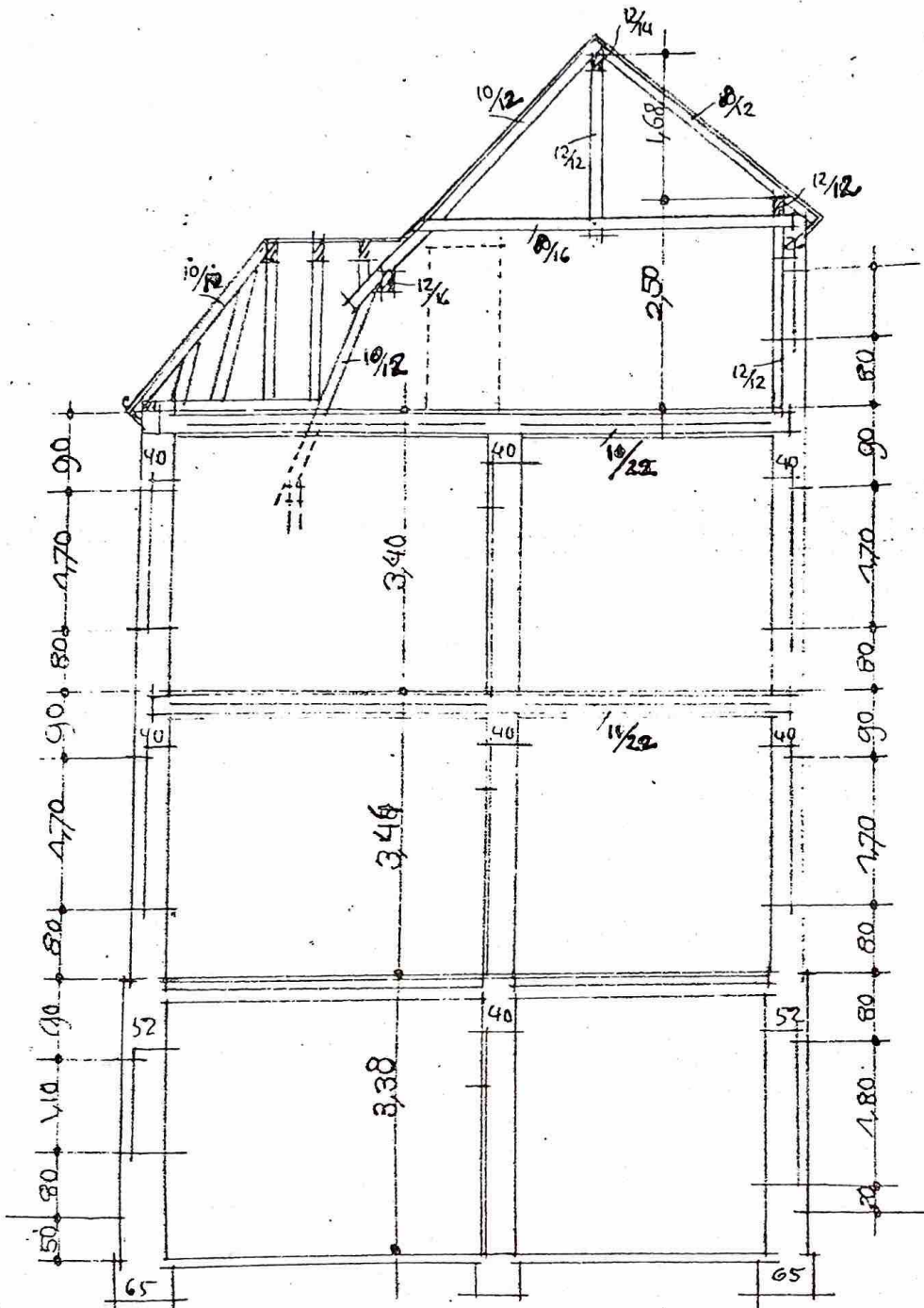
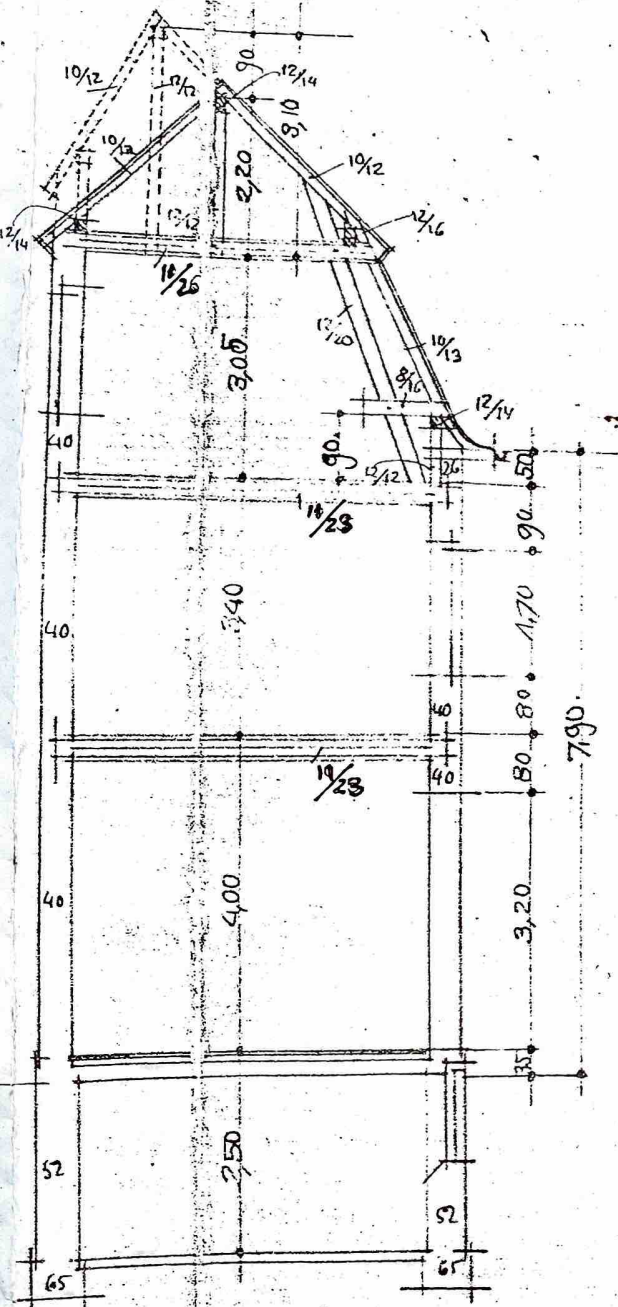


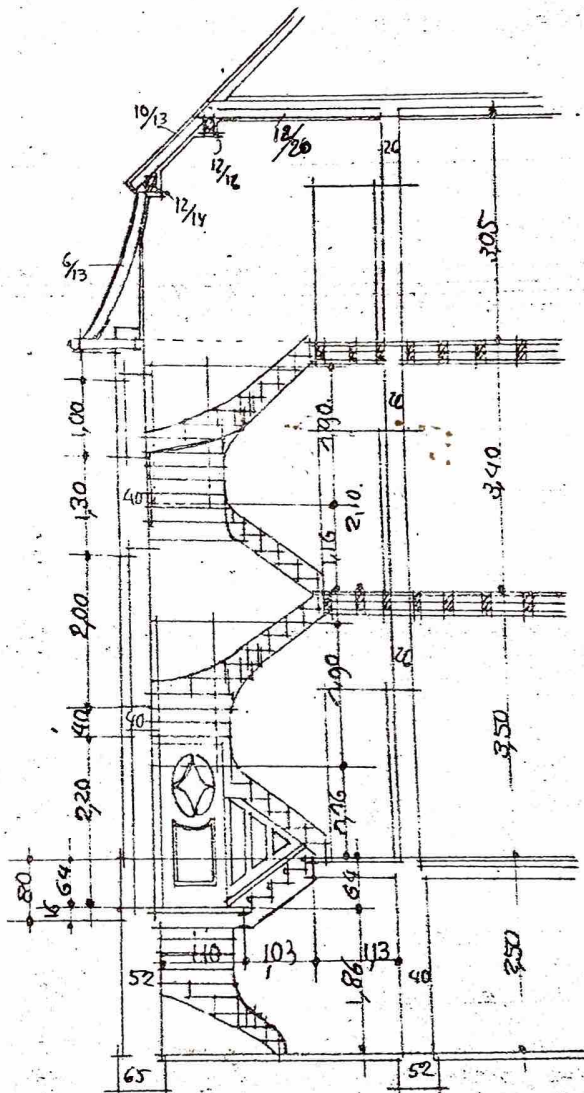
Schnitt E.F.



Schnitt P.H.



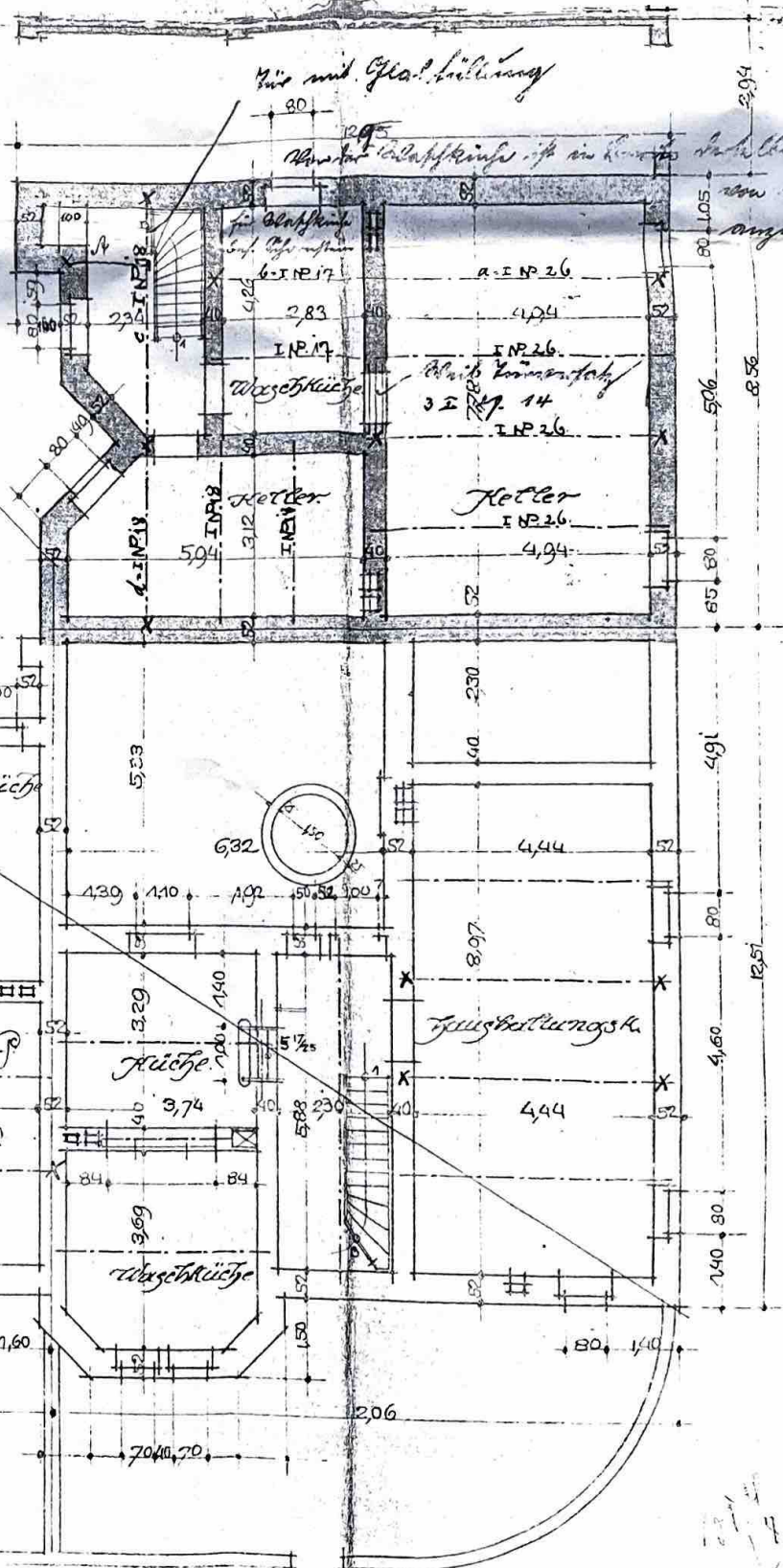
Schnitt J.K.



Schnitt G

Ansicht von der Ringstrasse.

Handwritten note:
 3. Stiegen im Schiefelhof
 ist in der Richtung
 nach Osten



Handwritten calculations:
 102
 12

 204
 102

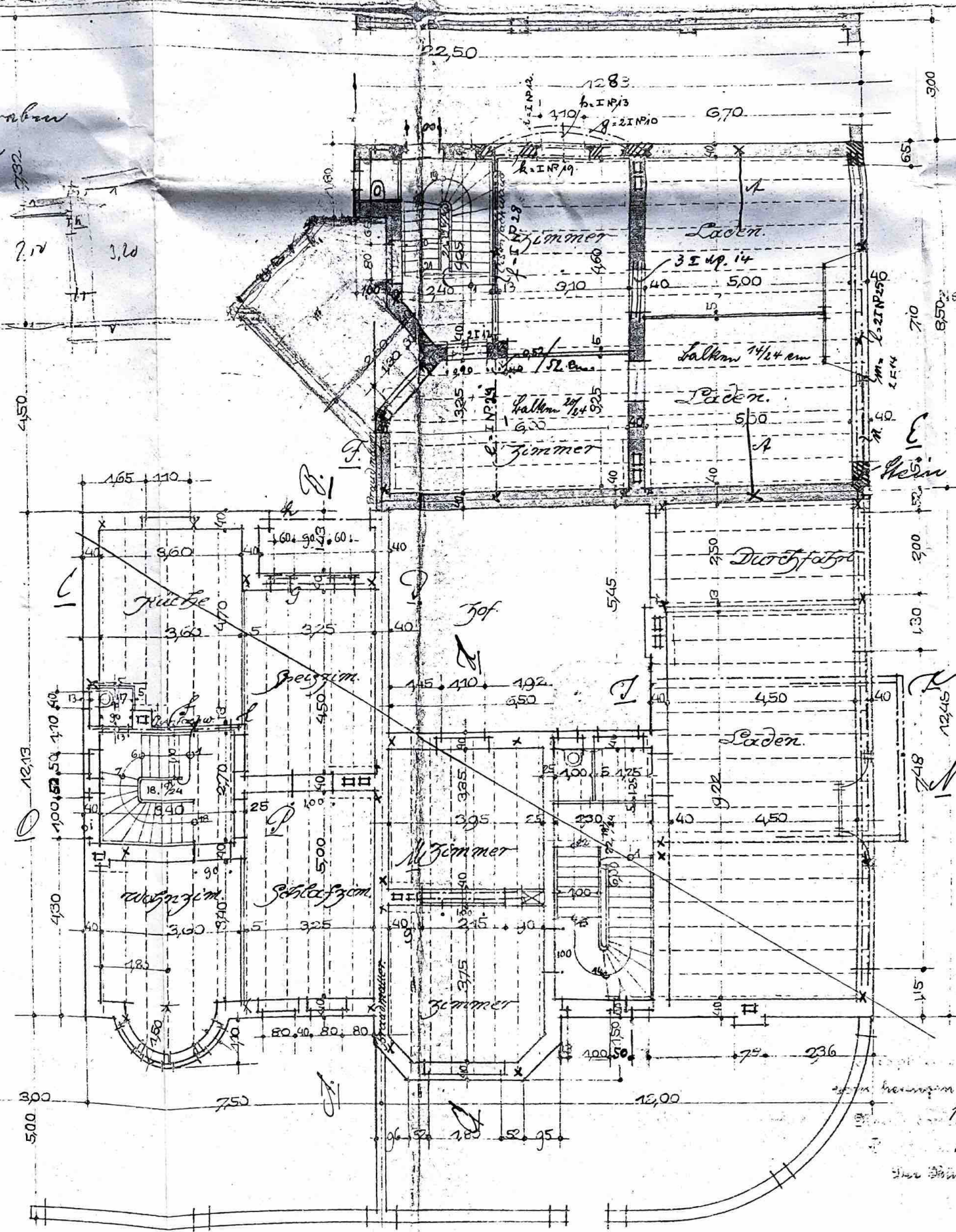
 1224
 13

 3672
 4

 14688

Handwritten numbers:
 1114
 14
 99,600

im Auftrage
v. H. W. ...



2.24
3.67
2.4

7.17 3.20

4.50

1.65 1.10

12.13

4.30

3.00
5.00

22.50

12.83
h. I.N.P.13
7.10
2.I.N.P.10
6.70

3.00

6.5

7.10

8.50

1.30

2.00

1.30

4.50

2.48

12.45

1.15

12.00

2.36

1.15

1.15

1.15

1.15

1.15

1.15

1.15

1.15

1.15

1.15

1.15

1.15

1.15

1.15

1.15

1.15

1.15

1.15

1.15

1.15

1.15

1.15

1.15

1.15

1.15

1.15

1.15

1.15

1.15

1.15

1.15

1.15

1.15

1.15

1.15

1.15

1.15

1.15

1.15

1.15

1.15

1.15

1.15

1.15

1.15

1.15

1.15

1.15

1.15

1.15

1.15

1.15

1.15

1.15

1.15

1.15

1.15

1.15

1.15

1.15

1.15

1.15

1.15

1.15

1.15

1.15

1.15

1.15

1.15

1.15

1.15

1.15

1.15

1.15

1.15

1.15

1.15

1.15

1.15

1.15

1.15

1.15

1.15

1.15

1.15

1.15

1.15

1.15

1.15

1.15

1.15

1.15

1.15

1.15

1.15

1.15

1.15

1.15

1.15

1.15

1.15

1.15

1.15

1.15

1.15

1.15

1.15

1.15

1.15

1.15

1.15

1.15

1.15

1.15

1.15

1.15

1.15

1.15

1.15

1.15

1.15

1.15

1.15

1.15

1.15

1.15

1.15

1.15

1.15

1.15

1.15

1.15

1.15

1.15

1.15

1.15

1.15

1.15

1.15

1.15

1.15

1.15

1.15

1.15

1.15

1.15

1.15

1.15

1.15

1.15

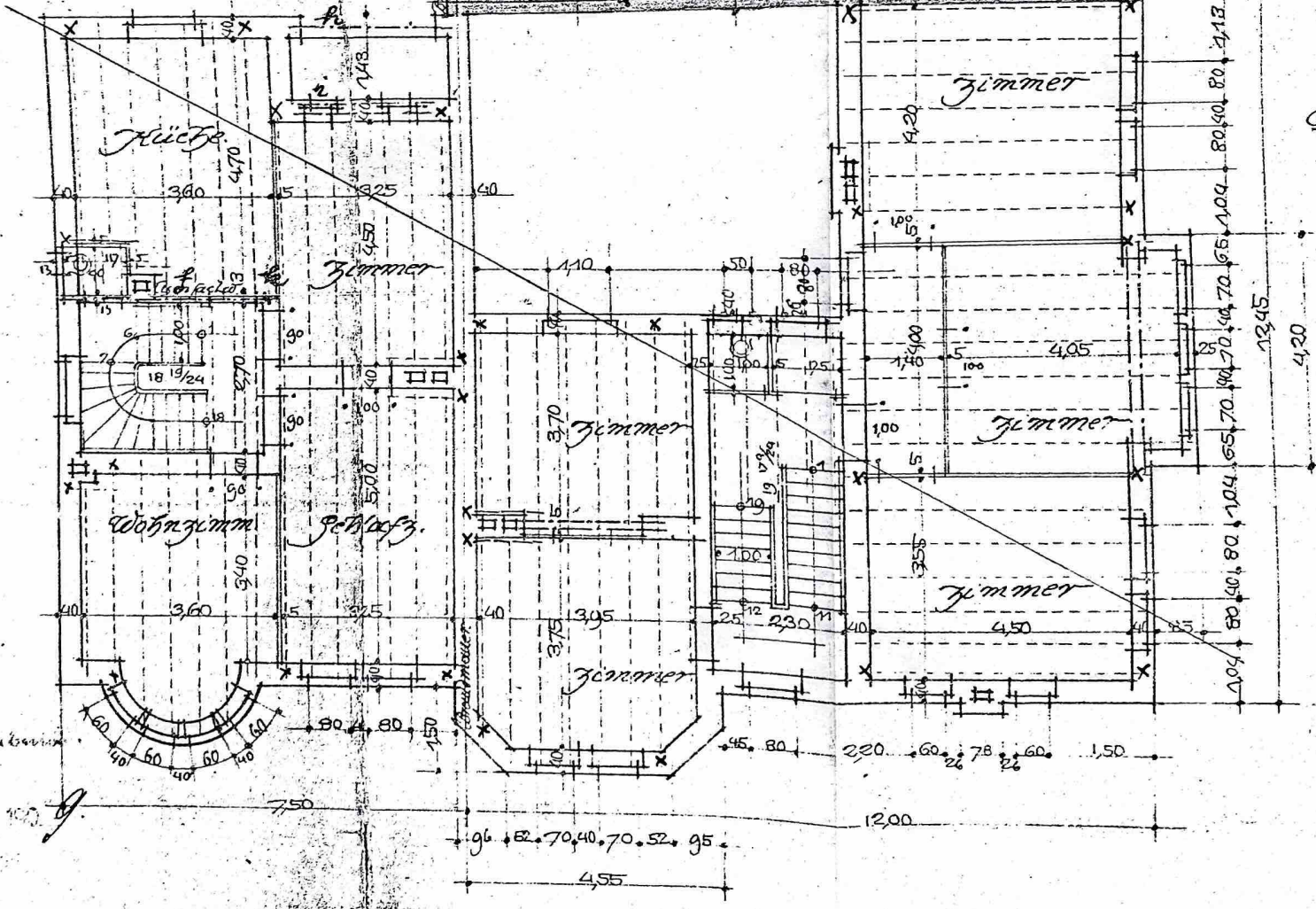
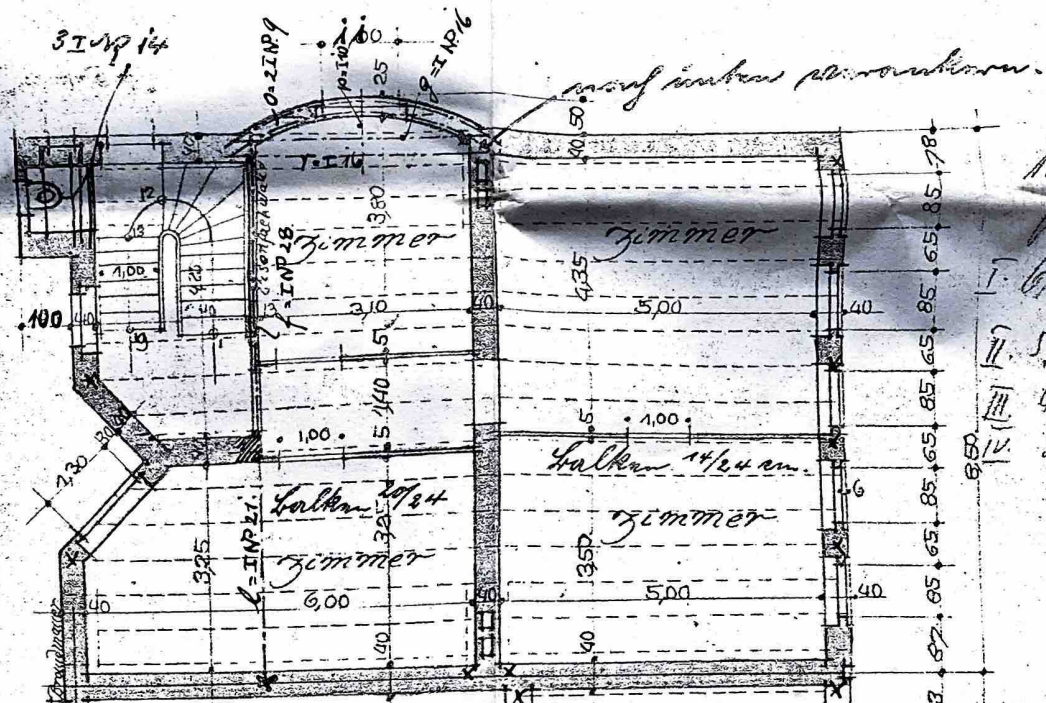
1.15

1.15

1.15

x Anker
 Cementmauerwerk
 Einzellich geprüft.
 12ten Februar 1909
 Stadtbaumeister:

[Signature]
 G. Pa



1210
 I. 6. 14
 II. 5. 14
 III. 4. 4
 IV. 3. 24

Amerikaner
 mir...

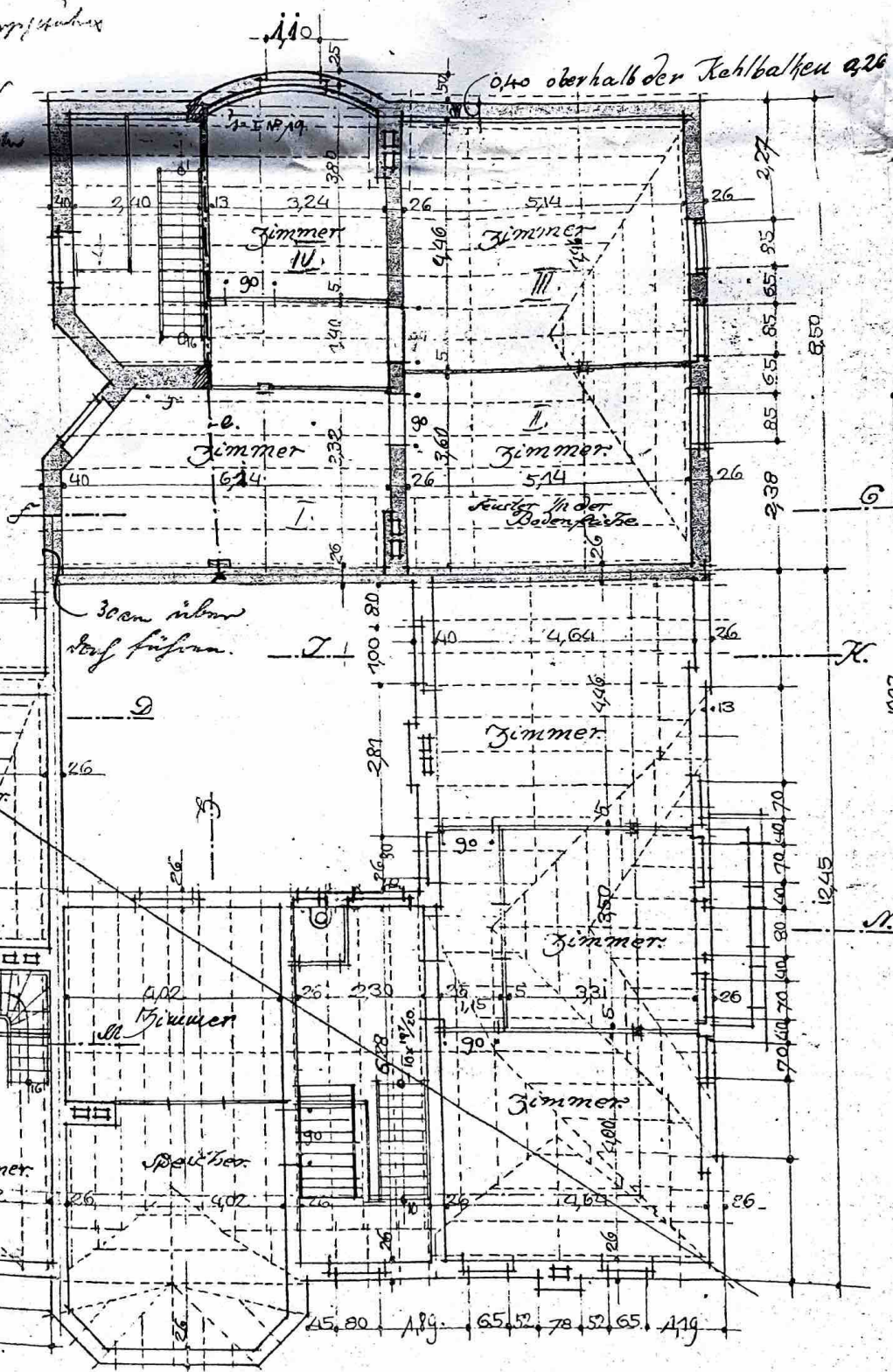
Vorgl. Entwurf 1. der Deckungsfläche

Grundfläche 121 qm - 4,28 · 2,5 - 1,91 · 2,15 - 2 · 2,215 = 102,90 qm

Wohnräume

- I. 6,14 · 3,32 = 140,140 19,40 qm
 - II. 5,14 · 3,60 = 18,51
 - III. 4,46 · 5,14 = 22,92
 - IV. 3,24 · 3,80 = 12,31
- 73,13 qm

19,40
18,51
22,92
12,31
73,13



12,45
4,20

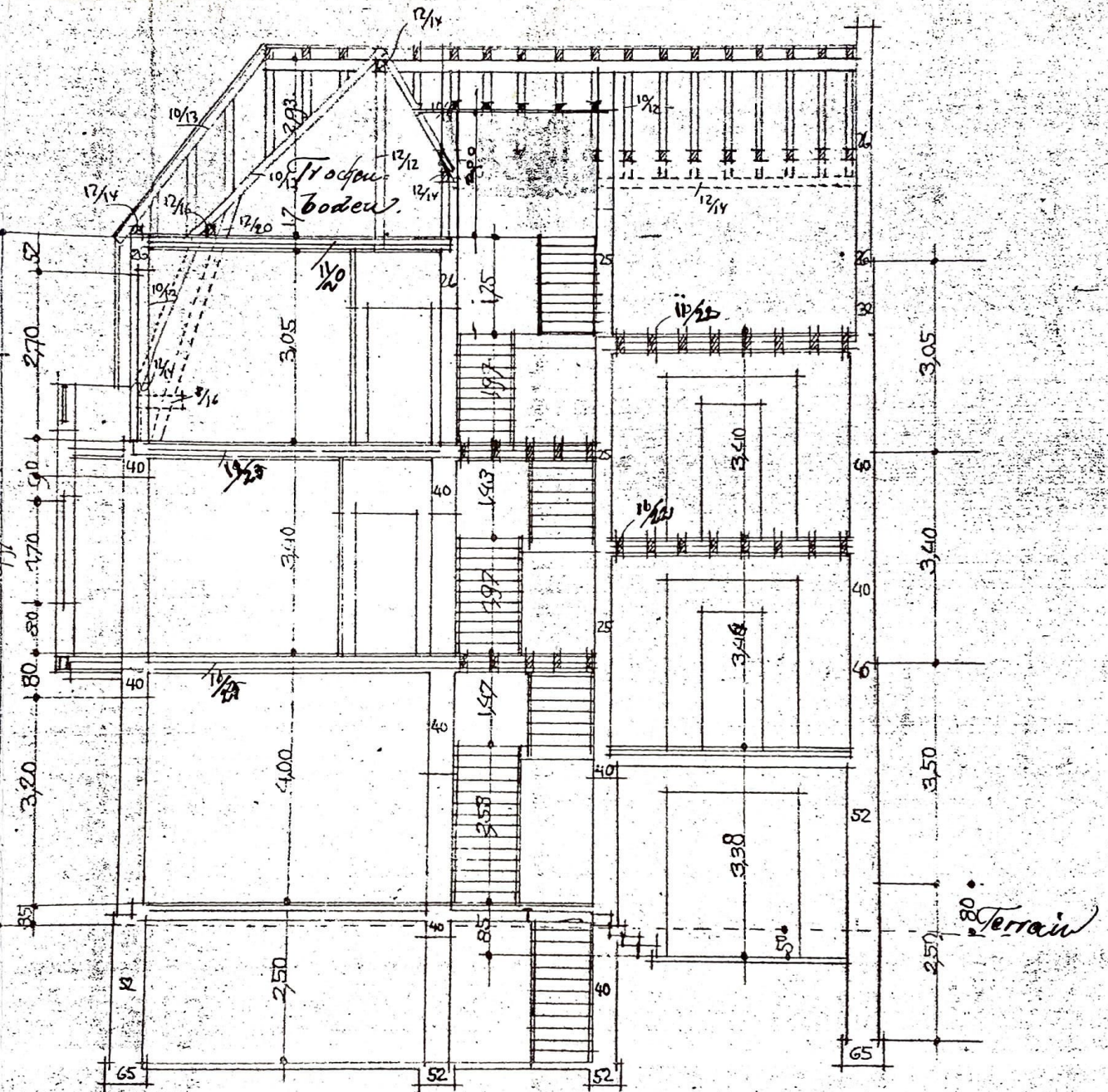
8,50

12,45

10,07

11,07

Meuss, den 7. Jänner
Dezember 1908



Schnitt M. N.

AKTEN EXEMPLAR

Der Bauherr:

Der Bauleiter:

Grundbesitz Caspar Thywissen

G. m. b. H.

Herrn Ingenieur *Paulus Meyer*

P. Schrammberg

Prof.