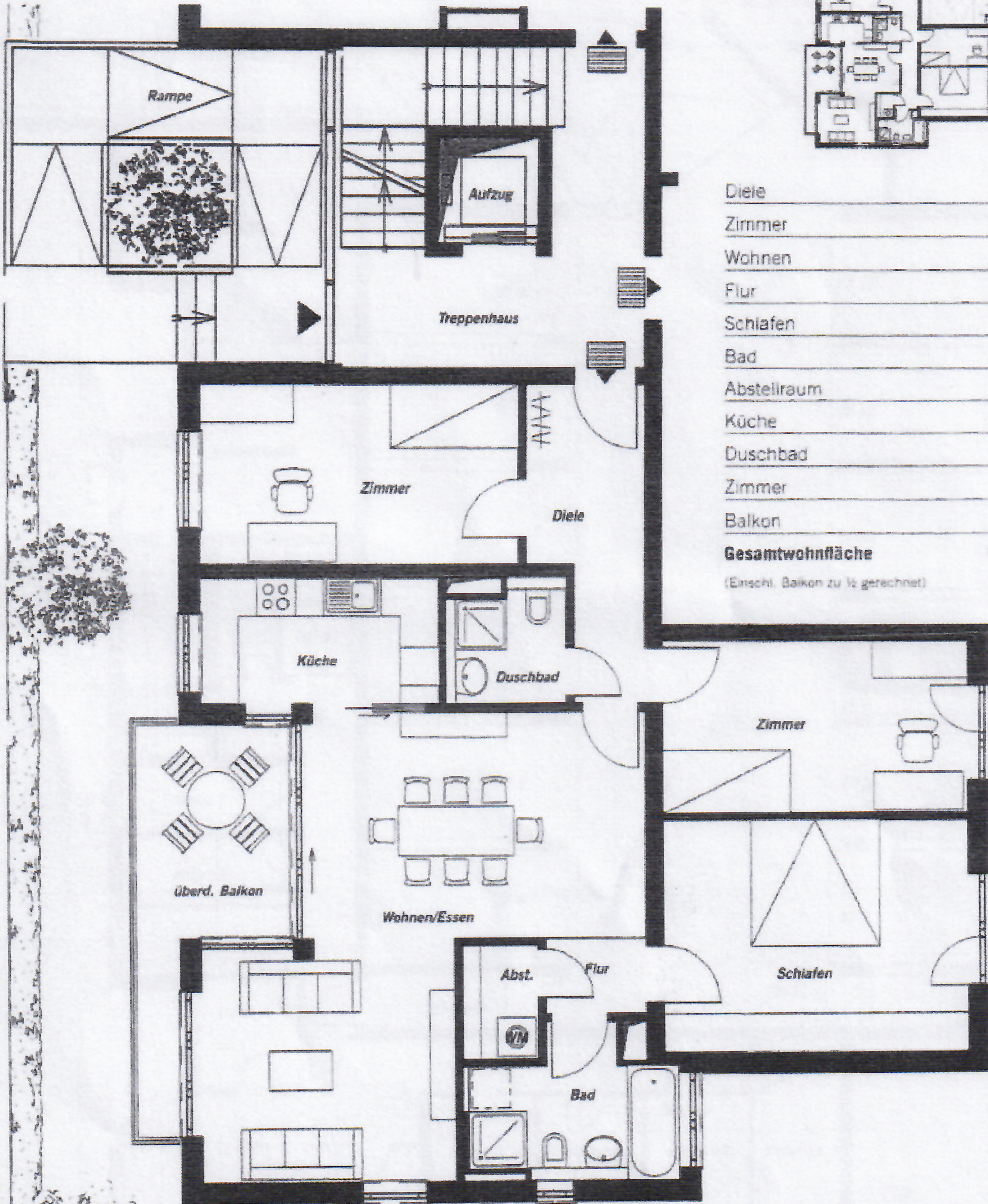
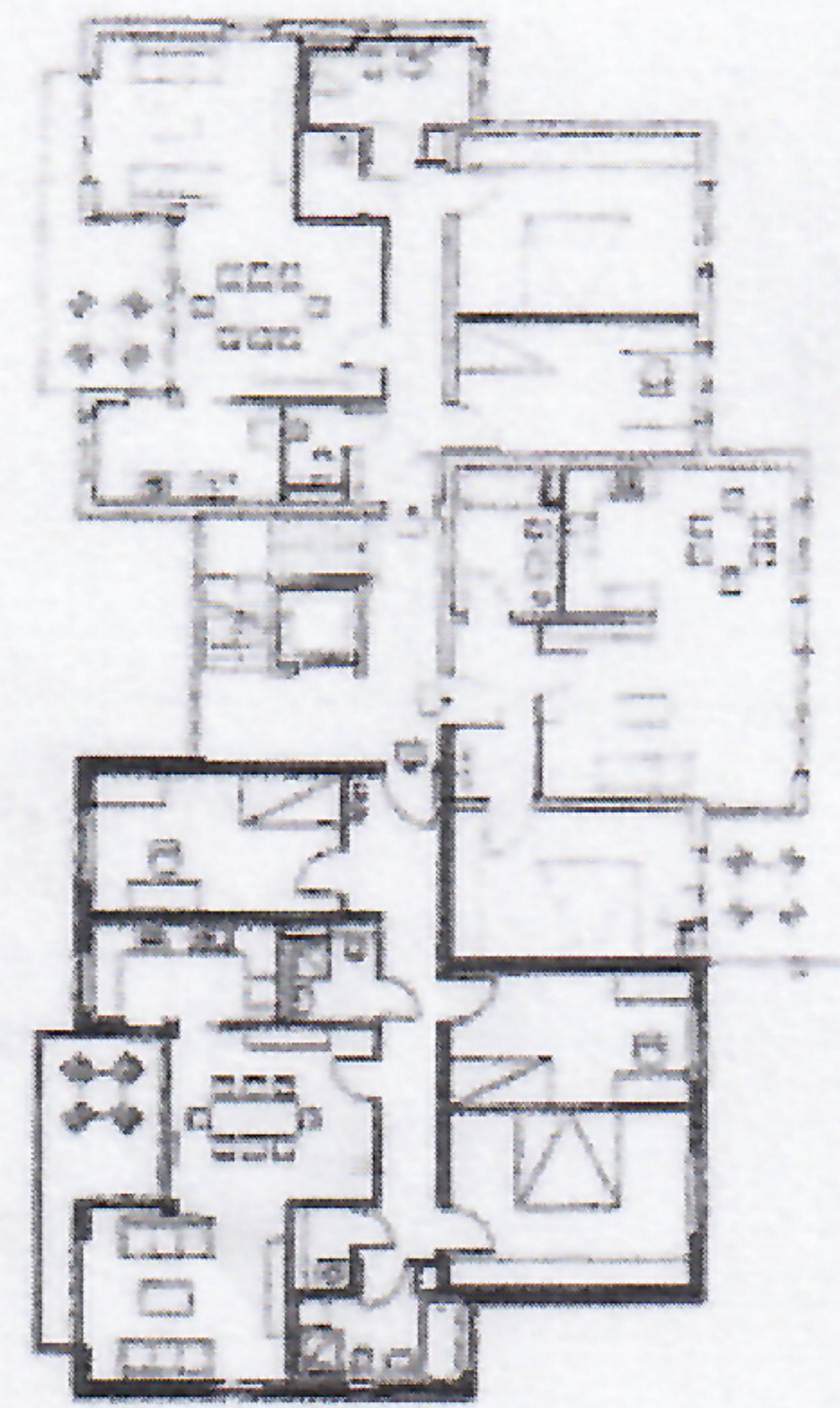


4,5 Zimmer-Wohnung  
Erdgeschoss

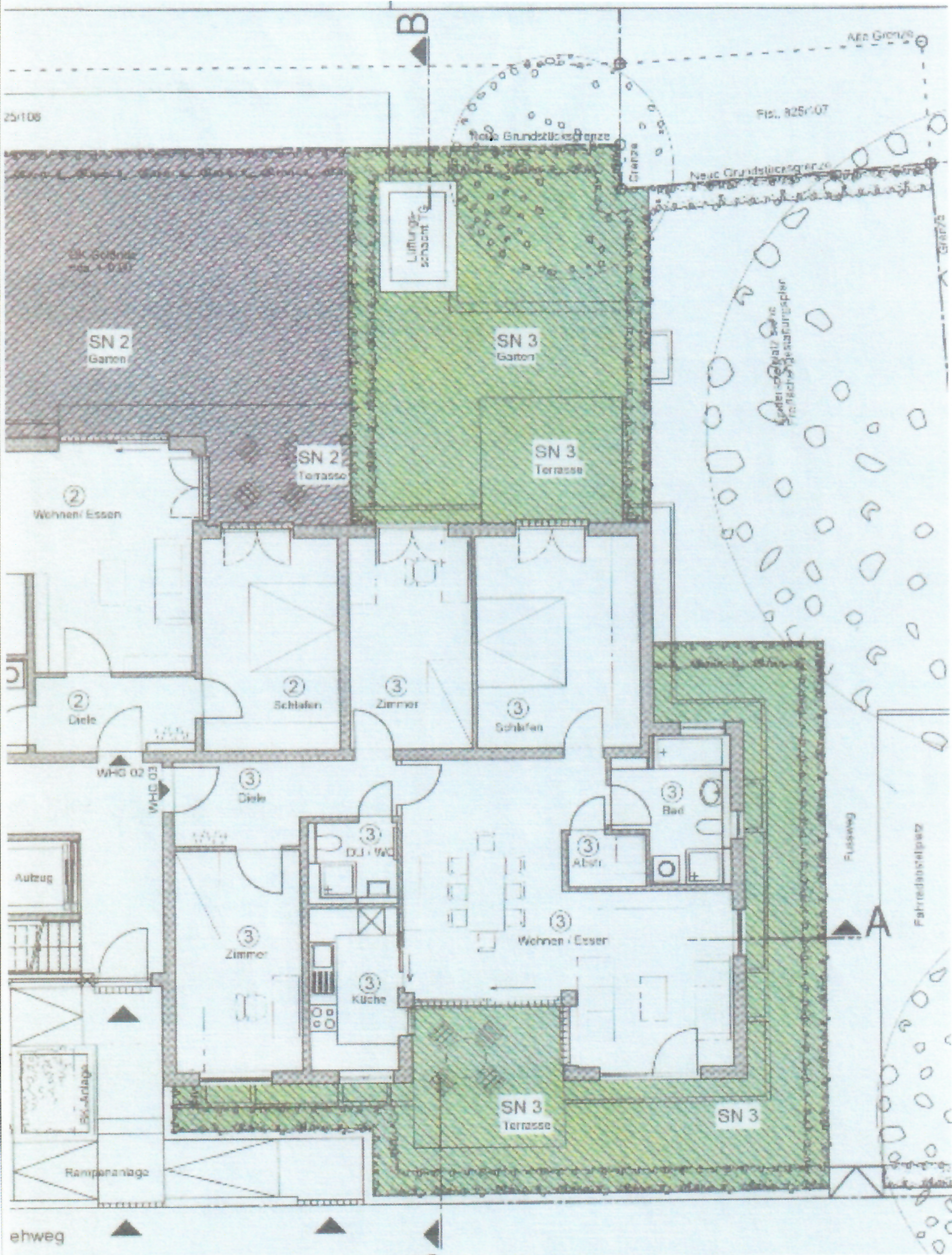


Diele	7,79 m <sup>2</sup>
Zimmer	13,25 m <sup>2</sup>
Wohnen	34,41 m <sup>2</sup>
Flur	1,92 m <sup>2</sup>
Schlafen	17,61 m <sup>2</sup>
Bad	6,57 m <sup>2</sup>
Abstellraum	2,15 m <sup>2</sup>
Küche	7,56 m <sup>2</sup>
Duschbad	3,47 m <sup>2</sup>
Zimmer	14,00 m <sup>2</sup>
Balkon	4,60 m <sup>2</sup>
<b>Gesamtwohnfläche</b>	<b>113,33 m<sup>2</sup></b>

(Einschl. Balkon zu 1/2 gerechnet)

Handwritten notes and signatures in the bottom left corner.

Handwritten notes and signatures in the bottom right corner.



# Kellergeschoss und Tiefgarage

