










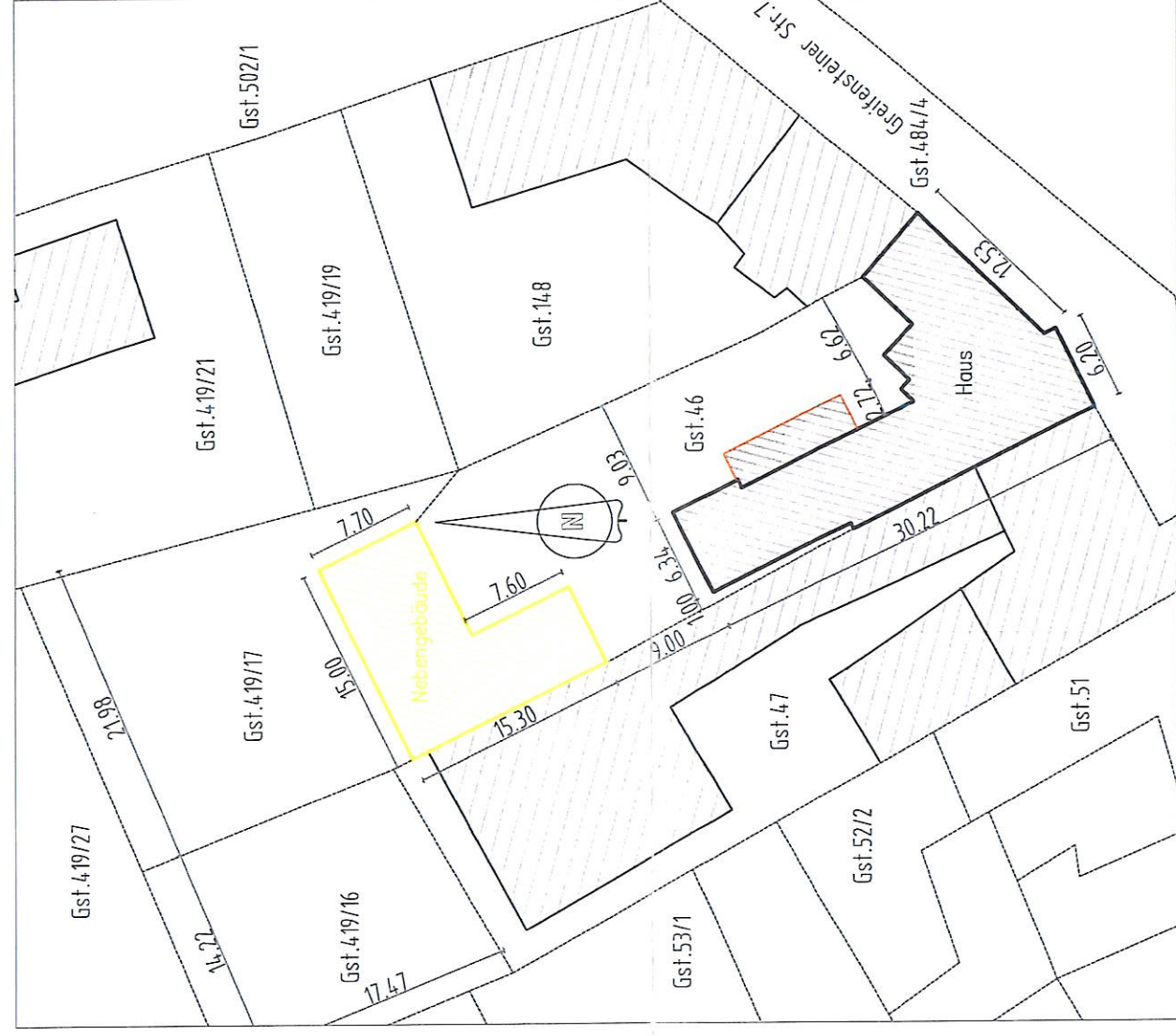


LEGENDE:

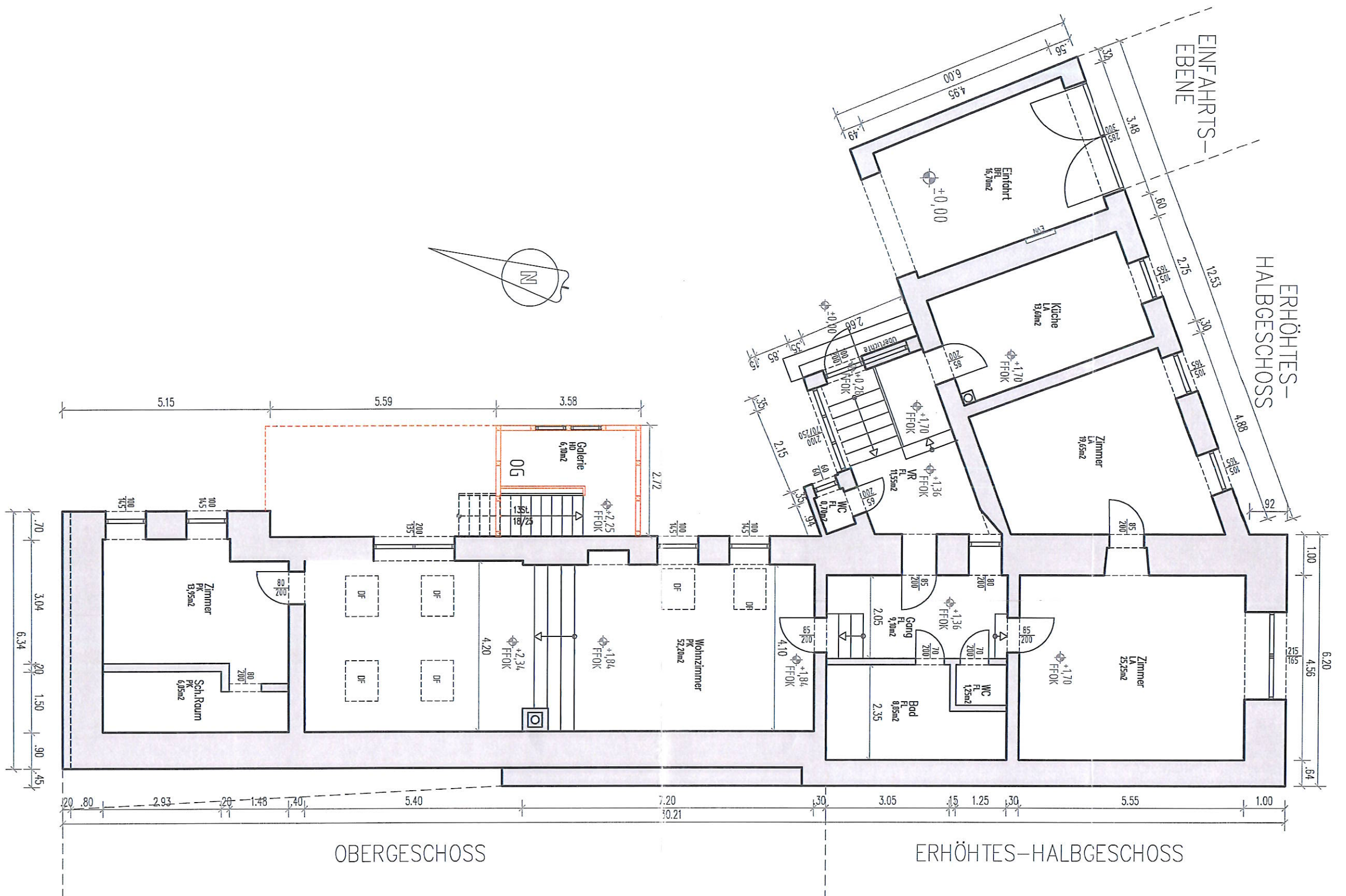
- |   |                            |   |  |
|---|----------------------------|---|--|
|  | NUK, SCHOTTER, ERDE...     |  | STAHLBETON   |
|  | BESTEHENDE BAUTEILE ALG.   |  | STAHL  |
|  | NEUERRECHT. BAUTEILE ALG.  |  | HOLZ   |
|  | ABZUTRAGENDE BAUTEILE ALG. |  | ABZUTRAGENDE B-TEILE UND,<br>AUF DER SELBEN STELLE NEUERRECHT. B-TEILE |
|  | GIPSKARTON                 |   |  |
|  | ZIEGELMAUERWERK            |   |  |
|  | BETON                      |   |  |

- ALLE INNENLIEGENDEN RÄUME MECHANISCH ENTLÜFTET
- OBERFLÄCHENWASSER WERDEN AM EIGENEN GRUNDSTÜCK ZUR VERSICKERUNG GEBRACHT
- PLÄNE AUFBAUEND AUF LETZTBEWILLIGTEN KONSENS
- DIE MASSE SIND VOR ORT ZU PRÜFEN, KOTEN PRÜFEN

LAGEPLAN M 1:500

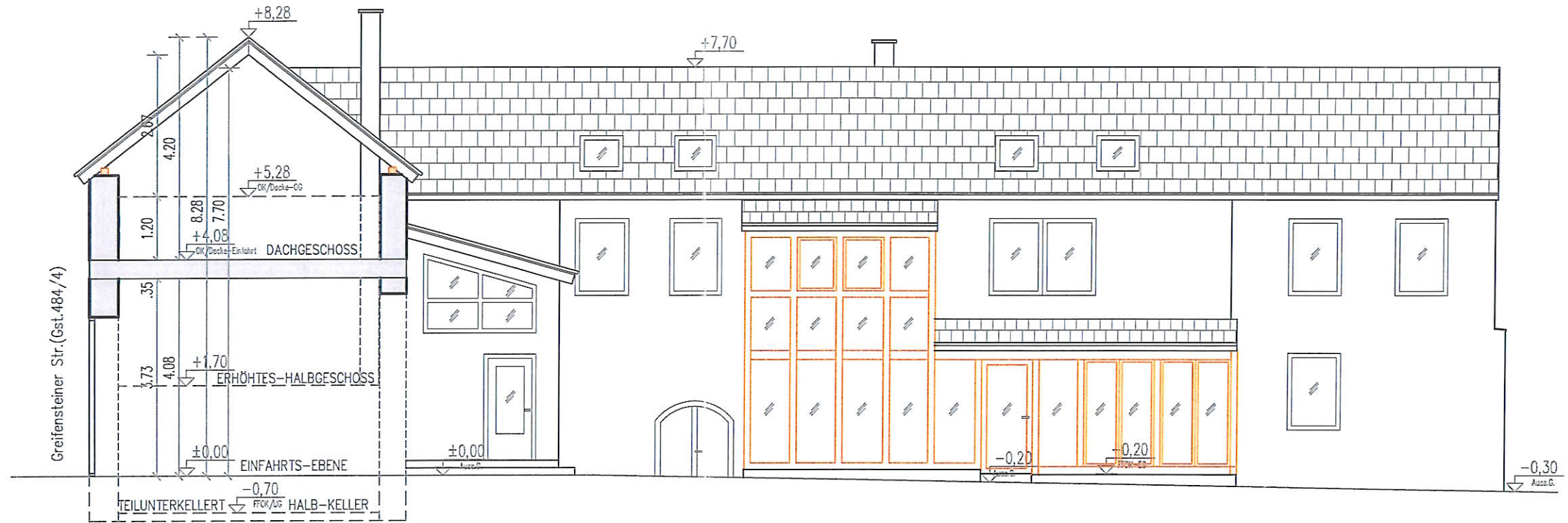




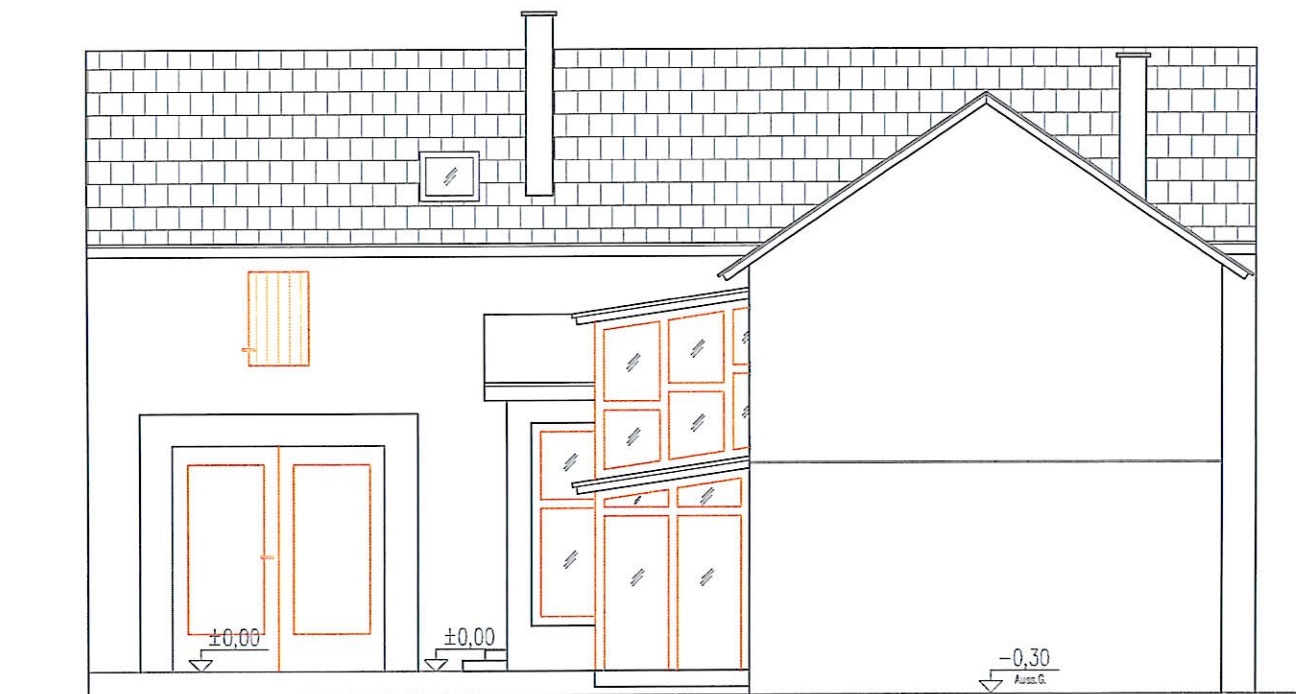


M 1:100

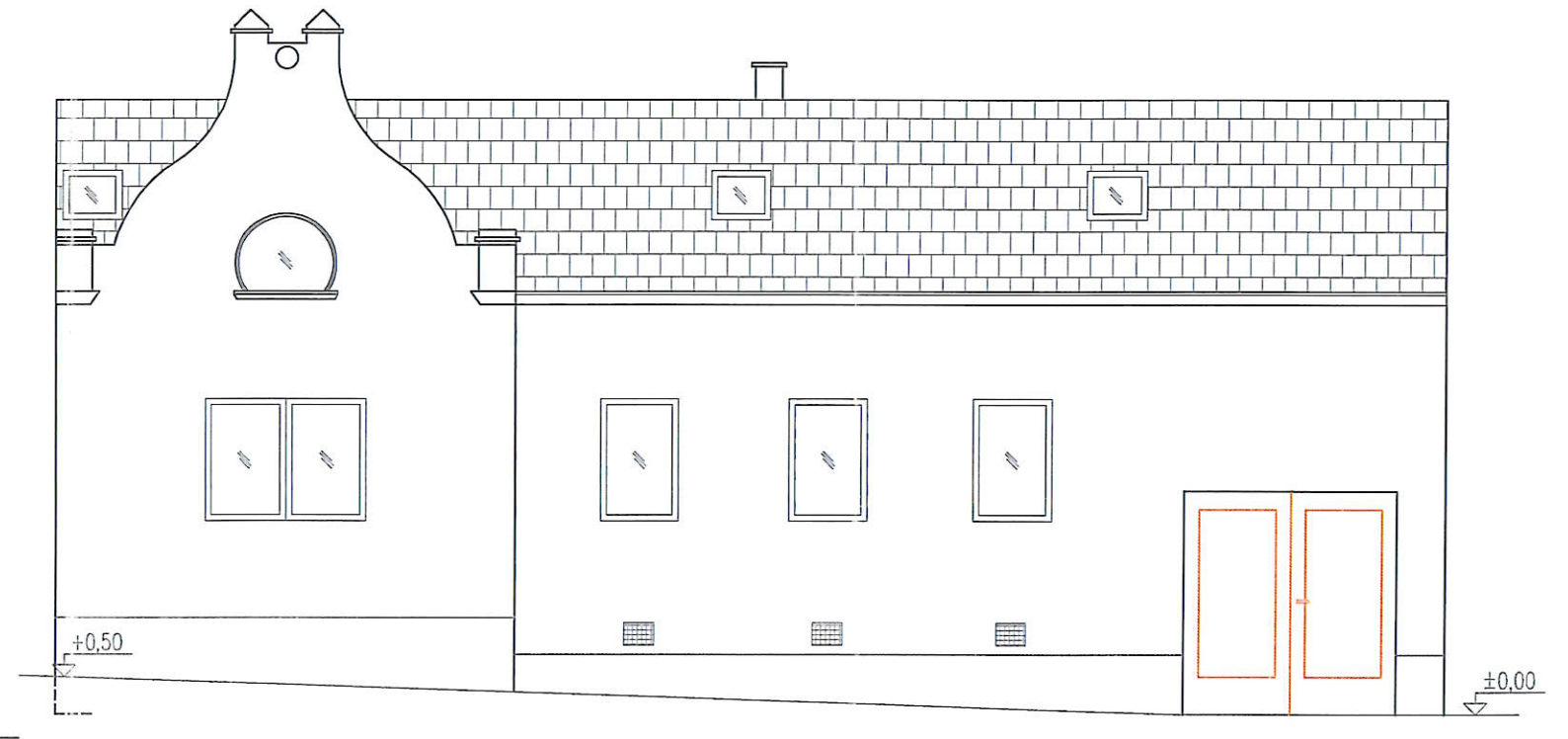
# SCHNITT: A-A/OSTANSICHT



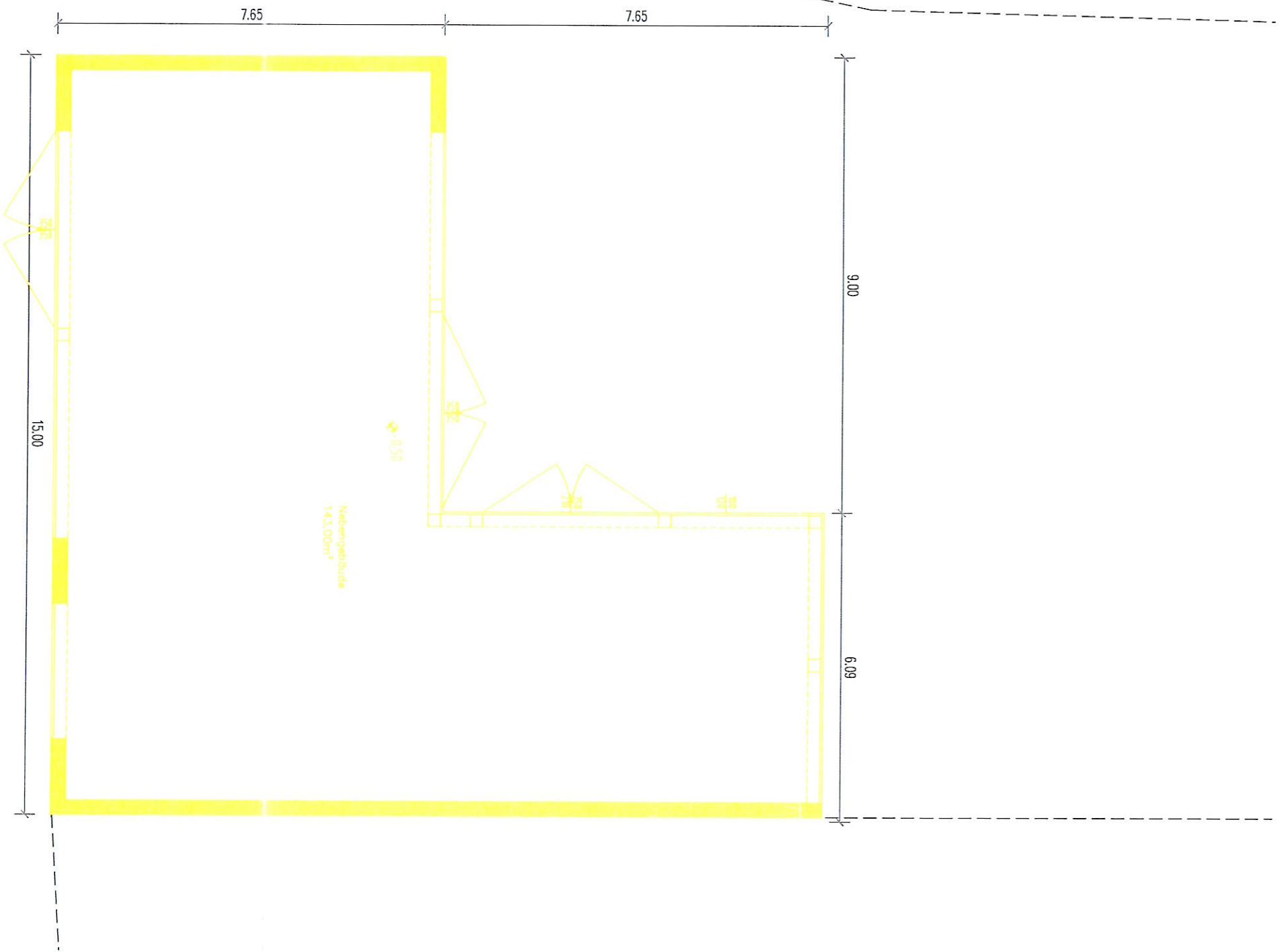
## NORDANSICHT



## SÜDANSICHT



M 1:100



Nebengebäude  
M 1:100