

EDEN BEACH

LA MATA (TORREVIEJA) - ALICANTE



NEW APARTMENTS WITH SEA VIEWS



EDEN BEACH

LA MATA

Located near the beach, La Mata (Torrevieja) is a wonderful location, with one of Costa Blanca's favoured destinations, with golf courses, theatres, museums and nautical sports.

The great salt lakes nearby are celebrated as wonderful bird sanctuaries, where sightings of herons and flamingos are commonplace.

For all of this, Eden Beach is a paradise to live.



LA MATA BEACH (TORREVIEJA)

Eden Beach is a new Taylor Wimpey de España apartment development in La Mata beach (Torrevieja, Alicante), with spectacular views over the sea in a residential area with all amenities.

La Mata beach is distinguished by its good communication and health infrastructures, quality restaurants, proximity to the Alicante airport and the amount of services available all year round.



Alicante Airport
40 km away

PROPERTIES TO LIVE ALL YEAR

2-bedroom apartments and 3-bedroom penthouses with large terraces with spectacular views over the sea in a residential area with all amenities.

The apartments have been designed for comfort and convenience, with excellent qualities and a layout that allows maximum enjoyment of the communal areas of the development.

The Costa Blanca is blessed by a spring-like, Mediterranean climate all year round, with an average temperature of 19°C, which means you can enjoy your favorite outdoor activities at any time of the year.

The Costa Blanca is the ideal destination for all kinds of sports and outdoor activities 365 days a year



LARGE TERRACES WITH PANORAMIC VIEWS

All the homes feature spacious terraces with sea views, private gardens on the ground floor, and solariums on penthouse floors with access from inside the home.

Eden Beach is a private gated community, 700 metres from La Mata beach, in Torrevieja.

The development stands out for its ample landscaped areas and complete installations, from which you will be able to enjoy the sun and the sea views; the communal areas include cascading pools and landscaped gardens.



A HOME LIKE NOWHERE ELSE

Materials and finishes have been selected to provide the homes with a high degree of elegance, comfort and exclusivity.

Highlights include porcelain flooring, PVC exterior carpentry, large windows to ensure maximum natural light, fully fitted kitchen, modern bathrooms with top of the range taps, mirrors and sanitary fittings, aerothermal climatization system throughout the apartment with equipment included.

As part of our customization program, you will be able to choose between different color options for the kitchen furniture and several options for the tiles in the bathrooms.*

Built with excellent, high-quality materials, the new homes form an attractive residential complex, with private outdoor parking, bicycle parking area, swimming pools and garden areas.

** Subject to the time limit and offers available from Taylor Wimpey Spain, so as not to impair the progress of the work.*



DESIGN AND COMFORT

2 BEDROOM GROUND FLOOR - TYPE A



2 BEDROOM GROUND FLOOR - TYPE A					
Build area	From	60,68 m ²	to	75,87 m ²	
Terrace	From	17,28 m ²	to	29,86 m ²	
Garden	From	12,81 m ²	to	63,55 m ²	

Images and project drawings are for illustrative purposes only.
Its content does not constitute a contract, part of a contract, or a guarantee.



Car and bicycle parking.

2 BEDROOM GROUND FLOOR - TYPE C



2 BEDROOM GROUND FLOOR - TYPE C				
Build area	From	60,68 m ²	to	75,87 m ²
Terrace	From	17,28 m ²	to	29,86 m ²
Garden	From	12,81 m ²	to	63,55 m ²

Images and project drawings are for illustrative purposes only.
Its content does not constitute a contract, part of a contract, or a guarantee.



Car and bicycle parking.

2 BEDROOM APARTMENTS - TYPE A



2 BEDROOM APARTMENTS - TYPE A

Build area	From	60,68 m ²	to	75,87 m ²
Terrace	From	17,28 m ²	to	29,86 m ²

Images and project drawings are for illustrative purposes only.
Its content does not constitute a contract, part of a contract, or a guarantee.



Car and bicycle parking.

2 BEDROOM APARTMENTS - TYPE B



2 BEDROOM APARTMENTS - TYPE B

Build area	From	60,68 m ²	to	75,87 m ²
Terrace	From	17,28 m ²	to	29,86 m ²

Images and project drawings are for illustrative purposes only.
Its content does not constitute a contract, part of a contract, or a guarantee.



Car and bicycle parking.

3 BEDROOM PENTHOUSES - TYPE E



3 BEDROOM PENTHOUSES - TYPE E

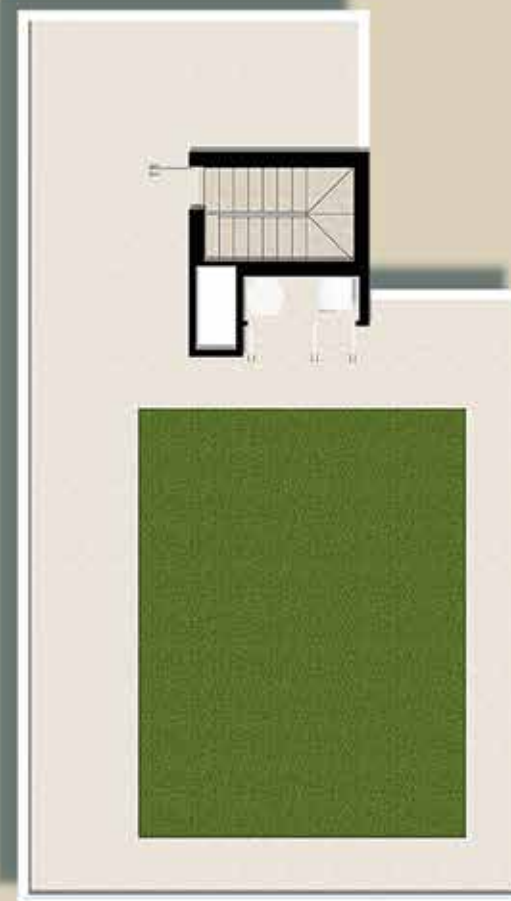
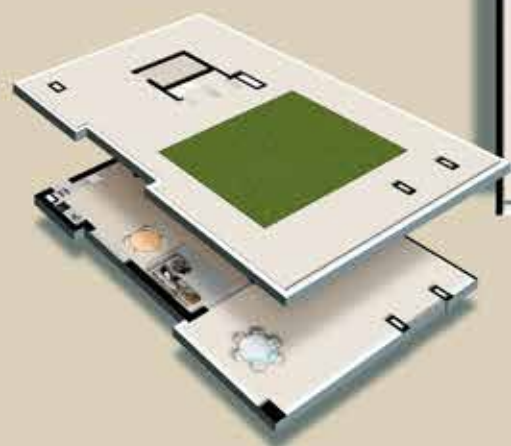
Build area	From	85,16 m ²	to	117,26 m ²
Terrace	From	24,26 m ²	to	39,03 m ²
Solarium	From	86,24 m ²	to	175,26 m ²

Images and project drawings are for illustrative purposes only.
Its content does not constitute a contract, part of a contract, or a guarantee.



Car and bicycle parking.

3 BEDROOM PENTHOUSES - TYPE F



3 BEDROOM PENTHOUSES - TYPE F

Build area	From	85,16 m ²	to	117,26 m ²
Terrace	From	24,26 m ²	to	39,03 m ²
Solarium	From	86,24 m ²	to	175,26 m ²

Images and project drawings are for illustrative purposes only.
Its content does not constitute a contract, part of a contract, or a guarantee.



Car and bicycle parking.

ENERGY EFFICIENCY AND THE ENVIRONMENT

At Taylor Wimpey Spain we are committed to adapting all our processes and supply chain to fight climate change, be more sustainable and contribute to improve health and well-being in your new home.

To do this, we adapt our construction processes and work to make our homes as efficient and healthy as possible.

What measures does TWE adopt in the execution of its works:

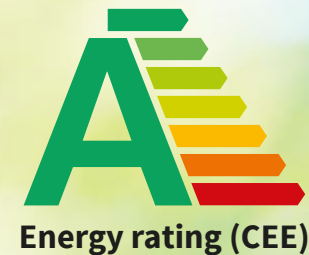
- Nearby suppliers that help minimize the carbon footprint derived from transportation.
- We segregate and recycle the waste produced on site.
- Exterior and environmental conditioning once our work is completed.
- We contract electrical energy with a Certified Guarantee of Origin for the execution of our work.

What do we do to make your home more sustainable and efficient:

- Domestic Hot Water using atherothermal machines.
- In those homes where possible, we install photovoltaic panels for the production of electricity, connected directly to the electrical distribution panel.
- Faucets with aerators to save water and dual flush cisterns.
- Installation of efficient appliances.
- Air conditioning equipment with R32 refrigerant gas (low Global Warming Potential and high energy efficiency).
- In selected homes, installation of pergolas for solar protection.
- Controlled mechanical ventilation for interior air renewal in all homes.
- Execution control and verification of thermal bridges.

What do we do to improve our common areas:

- Private parking space with pre-installation for charging an electric vehicle.
- Installation of drip irrigation systems with timers in garden areas.
- Presence detectors and/or timers in common areas. We install low consumption lighting.
- Native vegetation will be maintained in areas where possible and new plantations will be made with vegetation that needs little irrigation.
- In certain urbanizations, salt chlorination pools with sizes and depths adjusted to save water.



WHY IS TAYLOR WIMPEY ESPAÑA THE RIGHT DECISION?

Buying a Taylor Wimpey property in Spain doesn't just mean that you will now have a residence in a beautiful location, it also means that you are purchasing with total peace of mind. **Taylor Wimpey España** is a subsidiary of Taylor Wimpey PLC, a leading developer of residential real estate in Europe since 1880.

The subsidiary in Spain has been building properties in exclusive residential areas in the Balearic Islands, on the Costa Blanca and on the Costa del Sol since 1958. Sustainability and protecting the environment is important to us, as is creating architecture that blends harmoniously into the surrounding area.

In Spain we can look back with pride on over 65 years of experience building exclusive residential complexes. More than 7,000 customers have already placed their trust in us and have been very satisfied with the quality of our new build properties and our extensive After-Sales service which is a vital part of the customer service that sets us apart. We want you to relax and enjoy your new home knowing that every detail meets the highest quality standards, even those you cannot see.

TAYLOR WIMPEY IS THERE FOR YOU

If you are looking for your new home, or a holiday home, we will be delighted to help you find your perfect place in the sun.

**Taylor
Wimpey**
España



Freephone UK

08000 121 020

Rest of the world:

+34 971 70 69 72

www.taylorwimpeyspain.com

OTHER DEVELOPMENTS IN COSTA BLANCA

