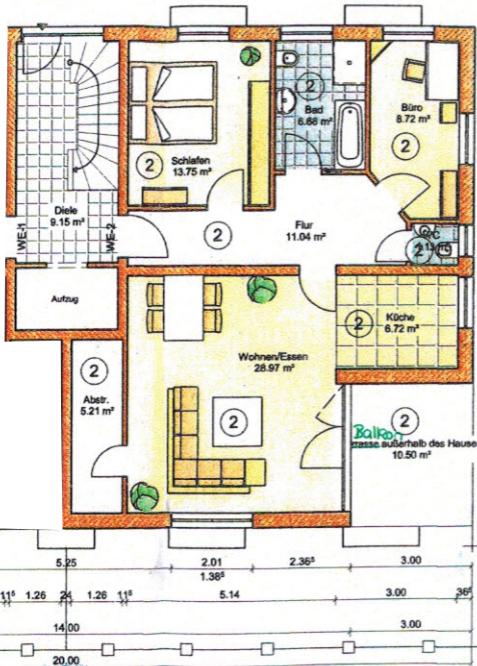


2.01 1.87^s 1.26 1.24 1.26 1.24 1.38^s 99
 2.28 1.36^s 1.38^s



37
 3.13
 2.26
 3.50
 3.50
 1.36^s
 1.26
 1.38^s
 2.31
 2.11^s
 1.26
 1.38^s
 1.48
 1.26
 1.38^s
 4.35^s
 24
 1.00
 1.1^s
 8.75
 12.25
 36^s

5.25 2.01 2.36^s 3.00
 1.38^s 5.14 3.00 36^s
 11^s 1.26 24 1.26 11^s
 14.00 3.00
 20.00