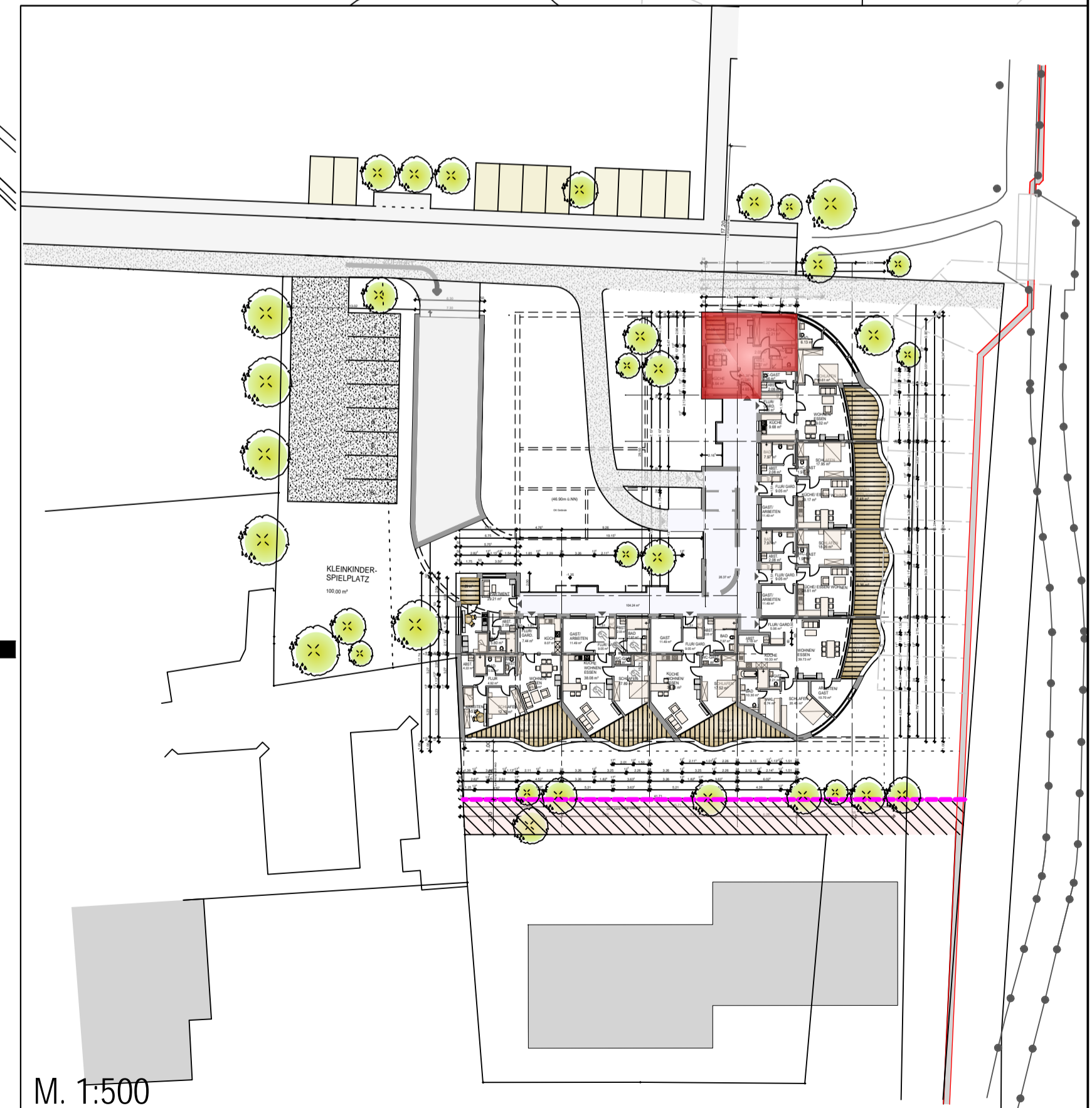
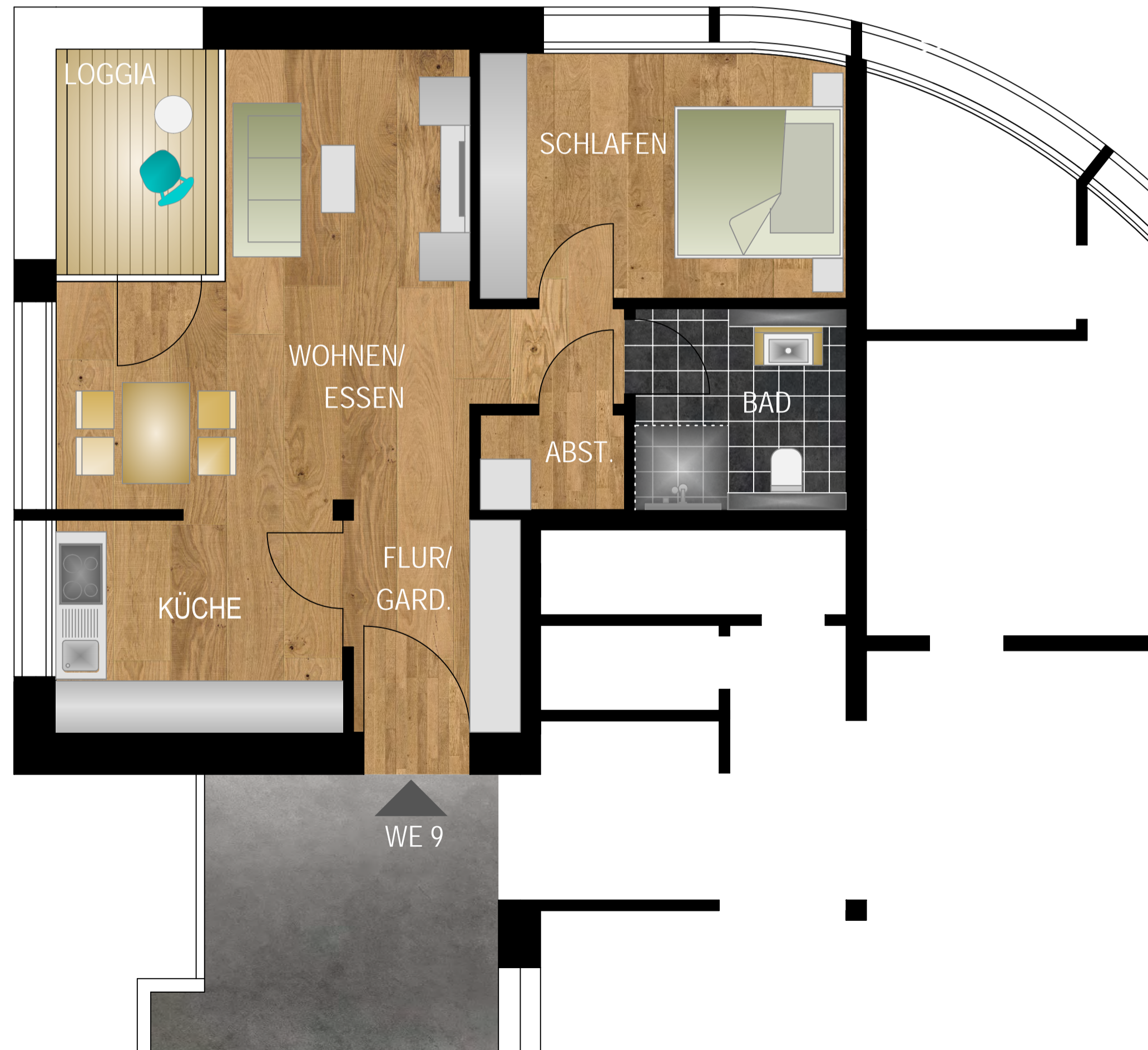
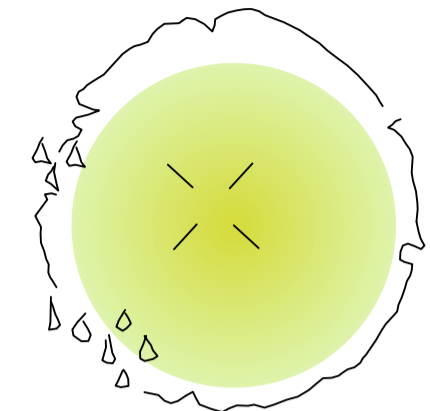


# ERDGESCHOSS WOHNEINHEIT 9

Loggia 5.06 m <sup>2</sup> (25% anrechenbar)	1.27 m <sup>2</sup>
Bad	5.81 m <sup>2</sup>
Flur/ Gard.	4.83 m <sup>2</sup>
Wohnen/ Essen	20.70 m <sup>2</sup>
Küche	8.61 m <sup>2</sup>
Schlafen	12.21 m <sup>2</sup>
Abstellraum	1.87 m <sup>2</sup>
<b>GESAMT</b>	<b>55.30 m<sup>2</sup></b>



M. 1:500

H/B = 420 / 594 (0.25m<sup>2</sup>)