

h 2,42

EG.

Wohnküche	19,09 + 13,52 =	32,41
HWR		13,07
WC		3,24
Speis		2,86

HWR

Heizung
h 2,40

$0,98 \times 3,39 = 3,24$

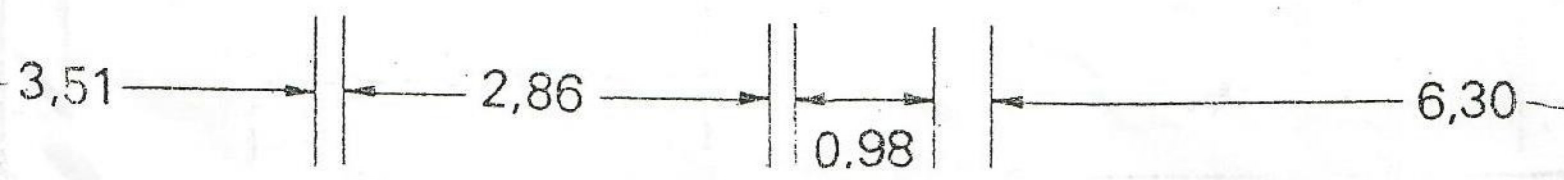
h 1,94

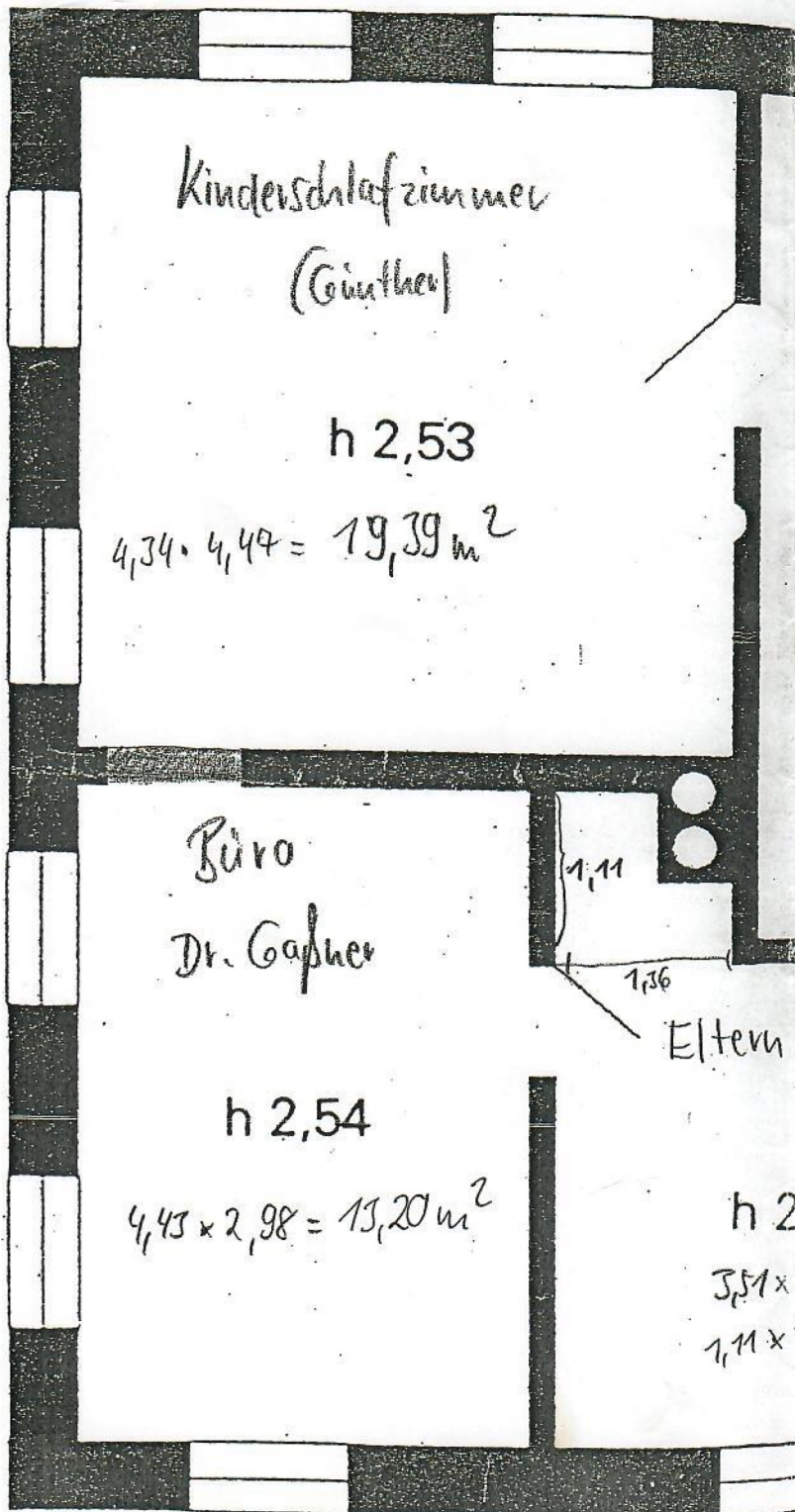
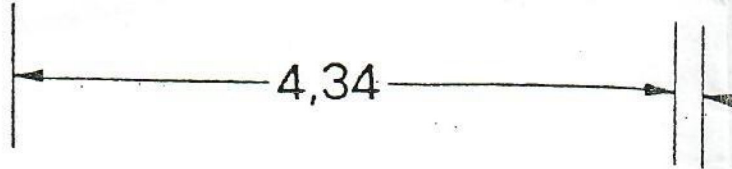
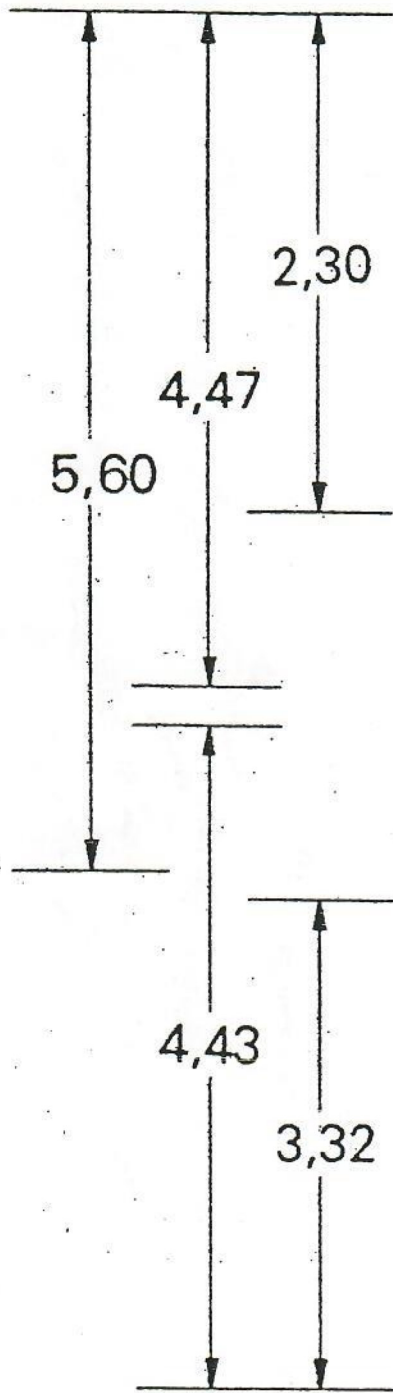
öltanks

Speis
h 2,40
2,86 x 1

WC

h 2,41
 $\times 3,31 = 12,61$
 $\times 1,10 = 1,46$
 13,07





2,21

3,87

Kinderschlafzimmer
(Barbara)

h 2,51

$3,87 \cdot 2,30 = 8,90$

h 2,56

I. OG. ²_m

Ki. Schlafzimmer 19,39 ²_m

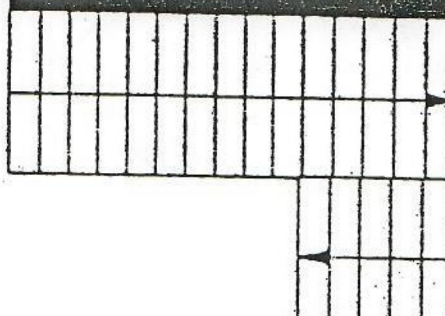
Ki. " 8,90

Büro Dr. Gaspner 13,20

Elternschlafzimmer 13,15 ²_m

Bad 9,49

WC 3,08 ²_m



h 2,23

Schlafzimmer

Bad

h 2,64

$3,32 \cdot 2,86 = 9,495$

h 2,37

$3,32 \cdot 3,32 = 11,0224$
 $11,0224 - 1,53 = 9,4924$
WC

2,56

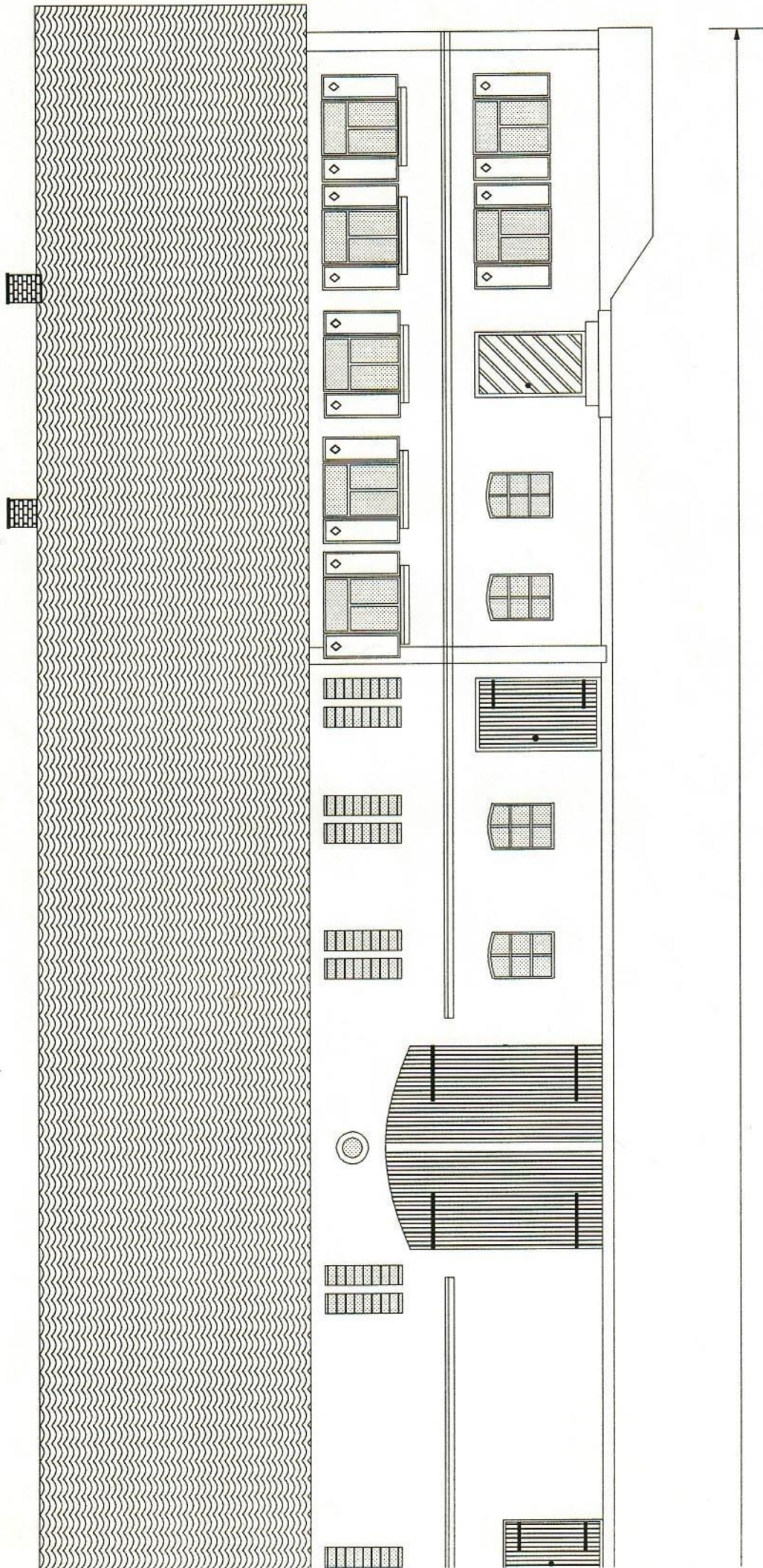
$3,32 = 11,65$
 $1,36 = 1,50$
13,15

51

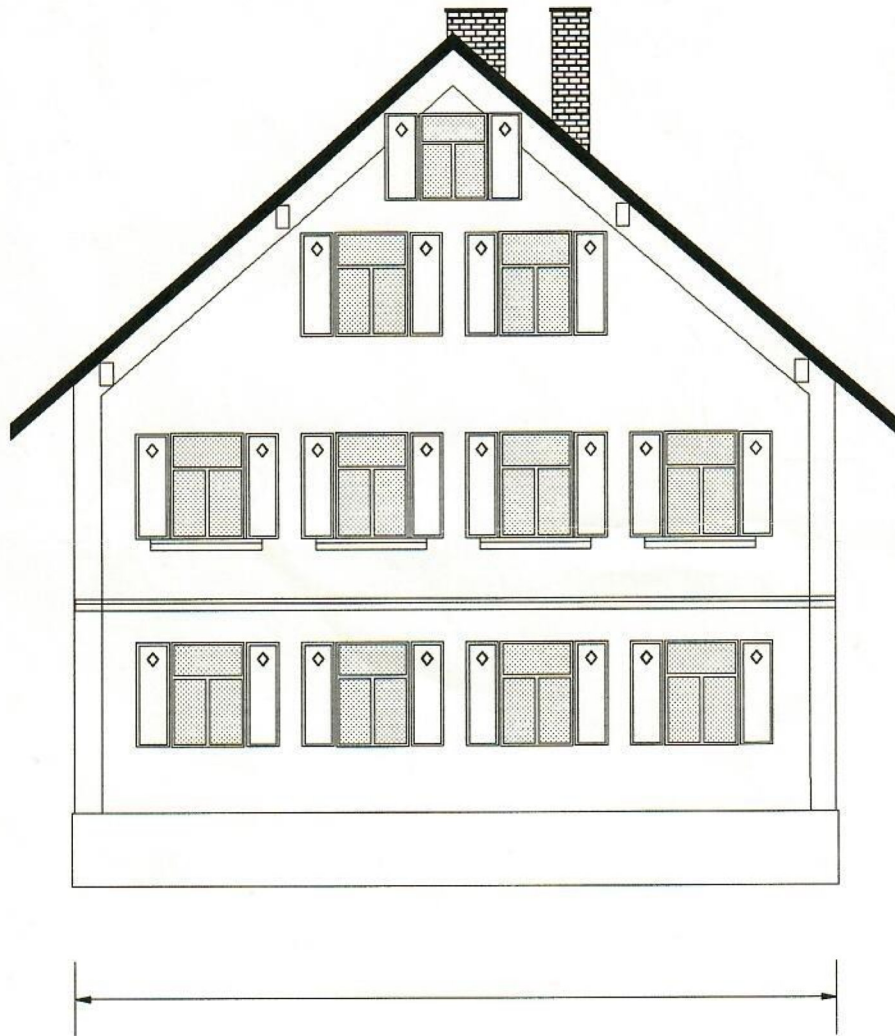
2,86

0,93

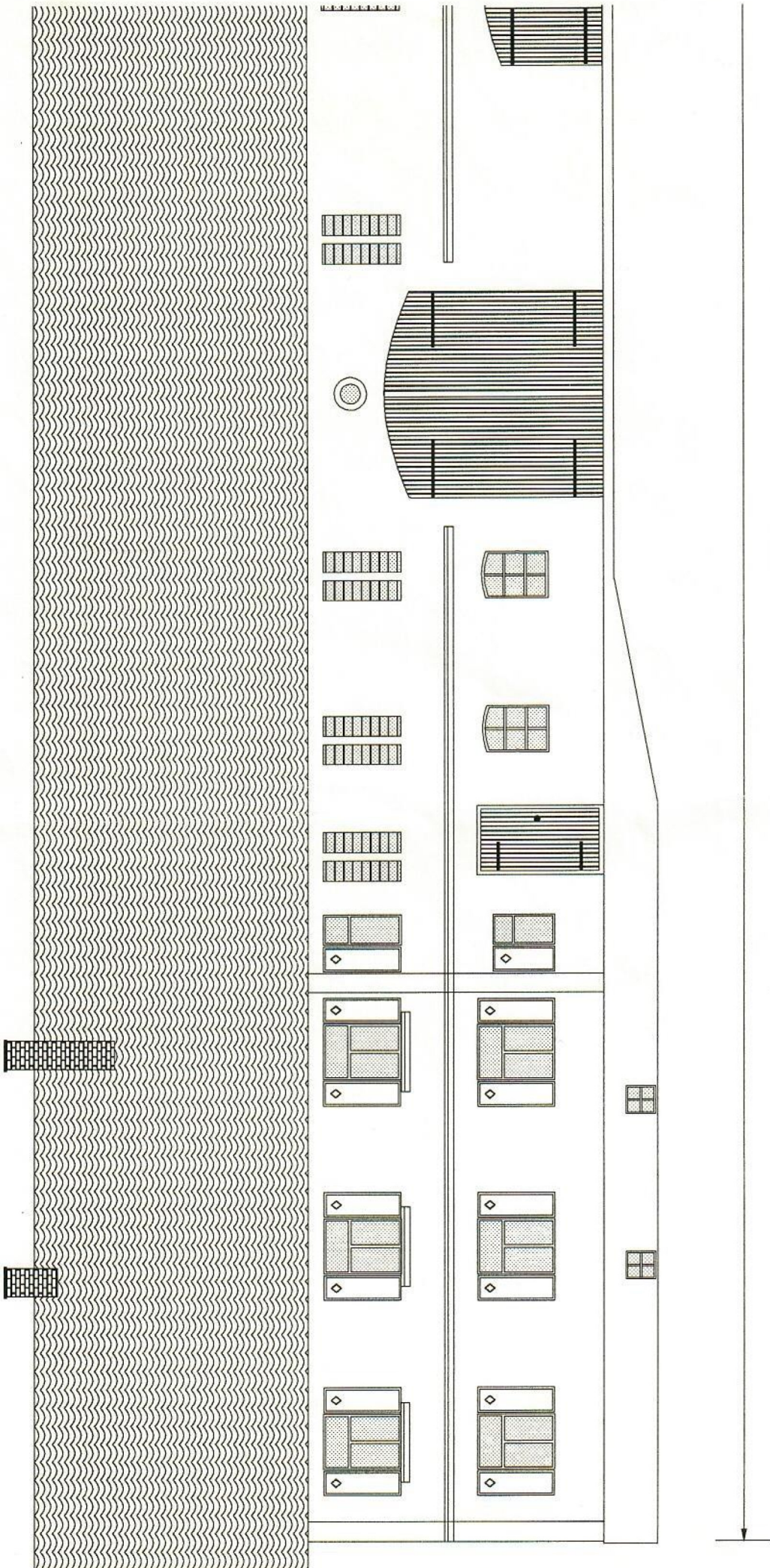
6,88



Ansicht von Süden



Ansicht von Osten



Ansicht von Norden