



FLOOR PLANS
8 INDEPENDENT LUXURY VILLAS



LIEGE *Mediterranean*

MEDITERRANEAN ARCHITECTURE
IN A CONTEMPORARY STYLE

Lovivin



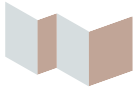
8 INDEPENDENT LUXURY VILLAS



 **LIEGE** *Mediterránea*

MEDITERRANEAN ARCHITECTURE
IN A CONTEMPORARY STYLE





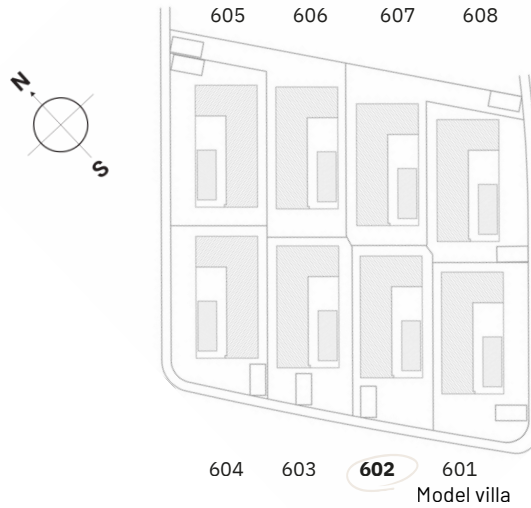
LIEGE *Mediterránea*

FLOOR PLANS 602

Num	Model	Plot Size
601	A	428,22
602	B	366,67
603	B	371,25
604	C	401,11
605	C	403,98
606	B	442,48
607	B	431,21
608	A	389,30

All measures are expressed in m²

Surface area in m ²	
SCK	40,19
BEDROOM 1	15,80
BATHROOM 1	4,24
BEDROOM 2	10,70
BATHROOM 2	5,00
BEDROOM 3	10,70
HALLWAY	4,25
ACCESS	3,70
OPEN TERRACES	46,00
OPEN SOLARIUM	61,00
TOTAL USABLE LIVING SPACE	94,58
TOTAL BUILT LIVING SPACE	118,98
TOTAL BUILDABLE AREA	121,60



Included

Kitchen appliances. Domotic system with electric shutters. Underfloor heating in bathrooms. Landscaped garden with irrigation system. Private pool 8 by 3 meters.



Legal notice. All the audiovisual, graphic and written info about this Project, is only for publicity and information purposes. Lovivin won't be responsible, about all the modifications that the project may suffer until completion and delivery.



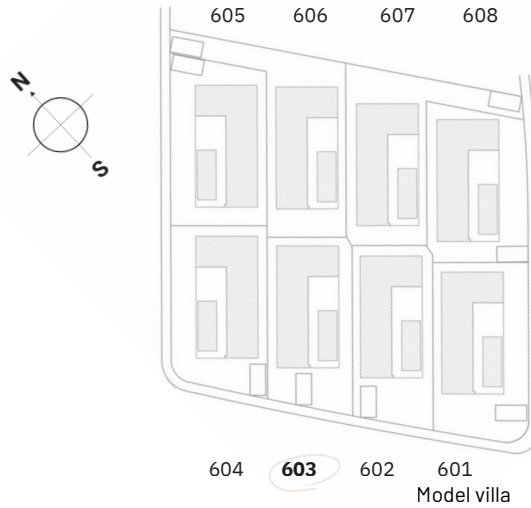
LIEGE *Mediterránea*

FLOOR PLANS 603

Num	Model	Plot Size
601	A	428,22
602	B	366,67
603	B	371,25
604	C	401,11
605	C	403,98
606	B	442,48
607	B	431,21
608	A	389,30

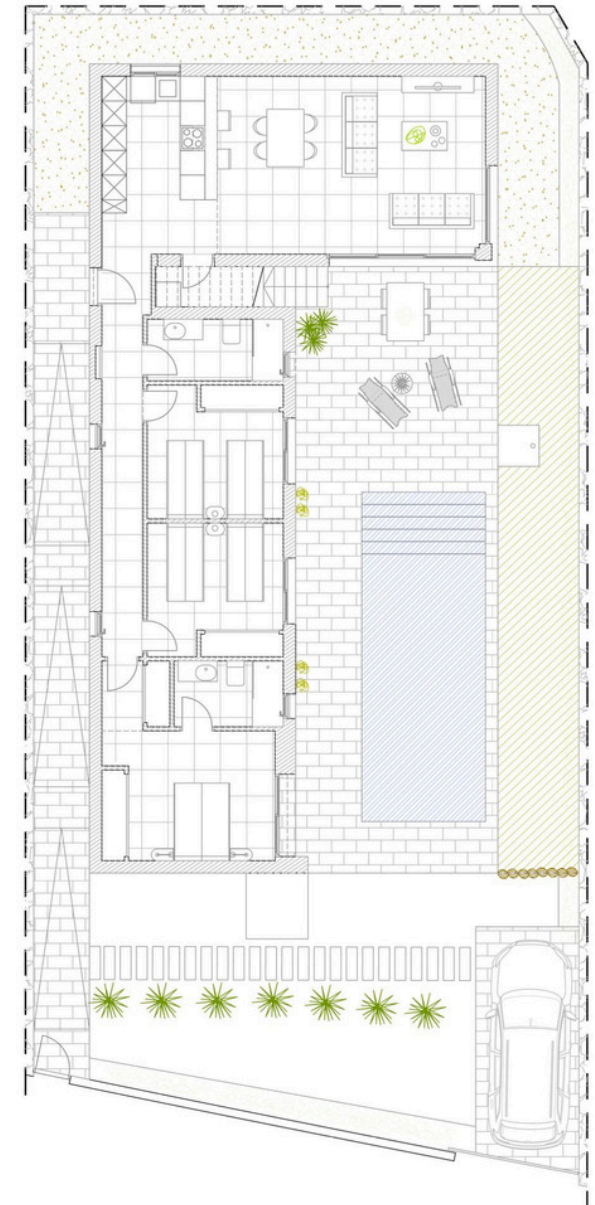
All measures are expressed in m²

Surface area in m ²	
SCK	40,19
BEDROOM 1	15,80
BATHROOM 1	4,24
BEDROOM 2	10,70
BATHROOM 2	5,00
BEDROOM 3	10,70
HALLWAY	4,25
ACCESS	3,70
OPEN TERRACES	46,00
OPEN SOLARIUM	61,00
TOTAL USABLE LIVING SPACE	94,58
TOTAL BUILT LIVING SPACE	118,98
TOTAL BUILDABLE AREA	121,60

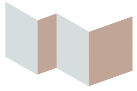


Included

Kitchen appliances. Domotic system with electric shutters. Underfloor heating in bathrooms. Landscaped garden with irrigation system. Private pool 8 by 3 meters.



Legal notice. All the audiovisual, graphic and written info about this Project, is only for publicity and information purposes. Lovivin won't be responsible, about all the modifications that the project may suffer until completion and delivery.



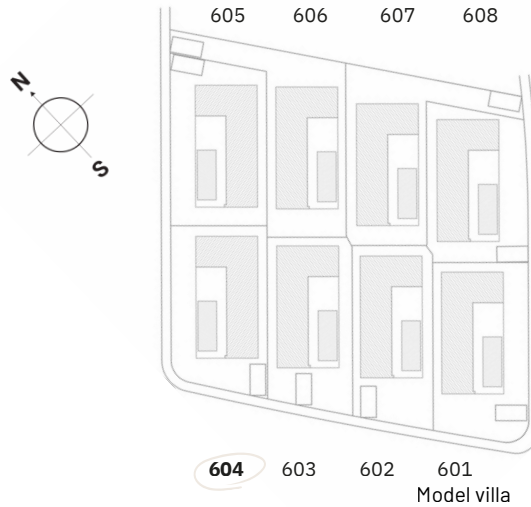
LIEGE *Mediterránea*

FLOOR PLANS 604

Num	Model	Plot Size
601	A	428,22
602	B	366,67
603	B	371,25
604	C	401,11
605	C	403,98
606	B	442,48
607	B	431,21
608	A	389,30

All measures are expressed in m²

Surface area in m ²	
SCK	40,19
BEDROOM 1	15,80
BATHROOM 1	4,24
BEDROOM 2	10,70
BATHROOM 2	5,00
BEDROOM 3	10,70
HALLWAY	4,25
ACCESS	3,70
OPEN TERRACES	46,00
OPEN SOLARIUM	61,00
TOTAL USABLE LIVING SPACE	94,58
TOTAL BUILT LIVING SPACE	118,98
TOTAL BUILDABLE AREA	121,60

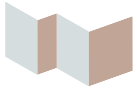


Included

Kitchen appliances. Domatic system with electric shutters. Underfloor heating in bathrooms. Landscaped garden with irrigation system. Private pool 8 by 3 meters.



Legal notice. All the audiovisual, graphic and written info about this Project, is only for publicity and information purposes. Lovivin won't be responsible, about all the modifications that the project may suffer until completion and delivery.



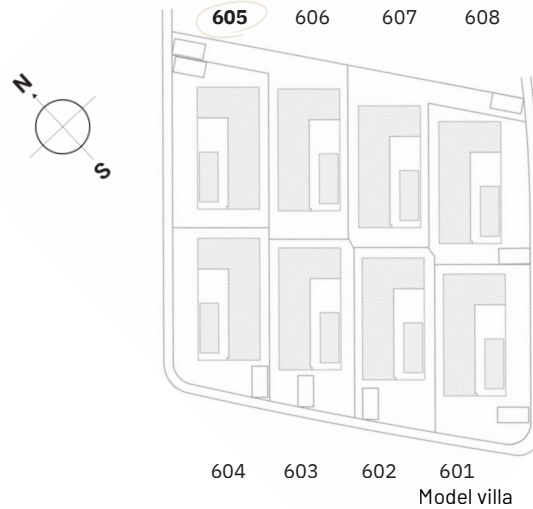
LIEGE *Mediterránea*

FLOOR PLANS 605

Num	Model	Plot Size
601	A	428,22
602	B	366,67
603	B	371,25
604	C	401,11
605	C	403,98
606	B	442,48
607	B	431,21
608	A	389,30

All measures are expressed in m²

Surface area in m ²	
SCK	40,19
BEDROOM 1	15,80
BATHROOM 1	4,24
BEDROOM 2	10,70
BATHROOM 2	5,00
BEDROOM 3	10,70
HALLWAY	4,25
ACCESS	3,70
OPEN TERRACES	46,00
OPEN SOLARIUM	61,00
TOTAL USABLE LIVING SPACE	94,58
TOTAL BUILT LIVING SPACE	118,98
TOTAL BUILDABLE AREA	121,60

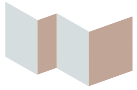


Included

Kitchen appliances. Domotic system with electric shutters. Underfloor heating in bathrooms. Landscaped garden with irrigation system. Private pool 8 by 3 meters.



Legal notice. All the audiovisual, graphic and written info about this Project, is only for publicity and information purposes. Lovivin won't be responsible, about all the modifications that the project may suffer until completion and delivery.



LIEGE *Mediterránea*

FLOOR PLANS 606

Num	Model	Plot Size
601	A	428,22
602	B	366,67
603	B	371,25
604	C	401,11
605	C	403,98
606	B	442,48
607	B	431,21
608	A	389,30

All measures are expressed in m²

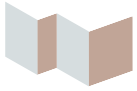
Surface area in m ²	
SCK	40,19
BEDROOM 1	15,80
BATHROOM 1	4,24
BEDROOM 2	10,70
BATHROOM 2	5,00
BEDROOM 3	10,70
HALLWAY	4,25
ACCESS	3,70
OPEN TERRACES	46,00
OPEN SOLARIUM	61,00
TOTAL USABLE LIVING SPACE	94,58
TOTAL BUILT LIVING SPACE	118,98
TOTAL BUILDABLE AREA	121,60



Included

Kitchen appliances. Domotic system with electric shutters. Underfloor heating in bathrooms. Landscaped garden with irrigation system. Private pool 8 by 3 meters.

Legal notice. All the audiovisual, graphic and written info about this Project, is only for publicity and information purposes. Lovivin won't be responsible, about all the modifications that the project may suffer until completion and delivery.



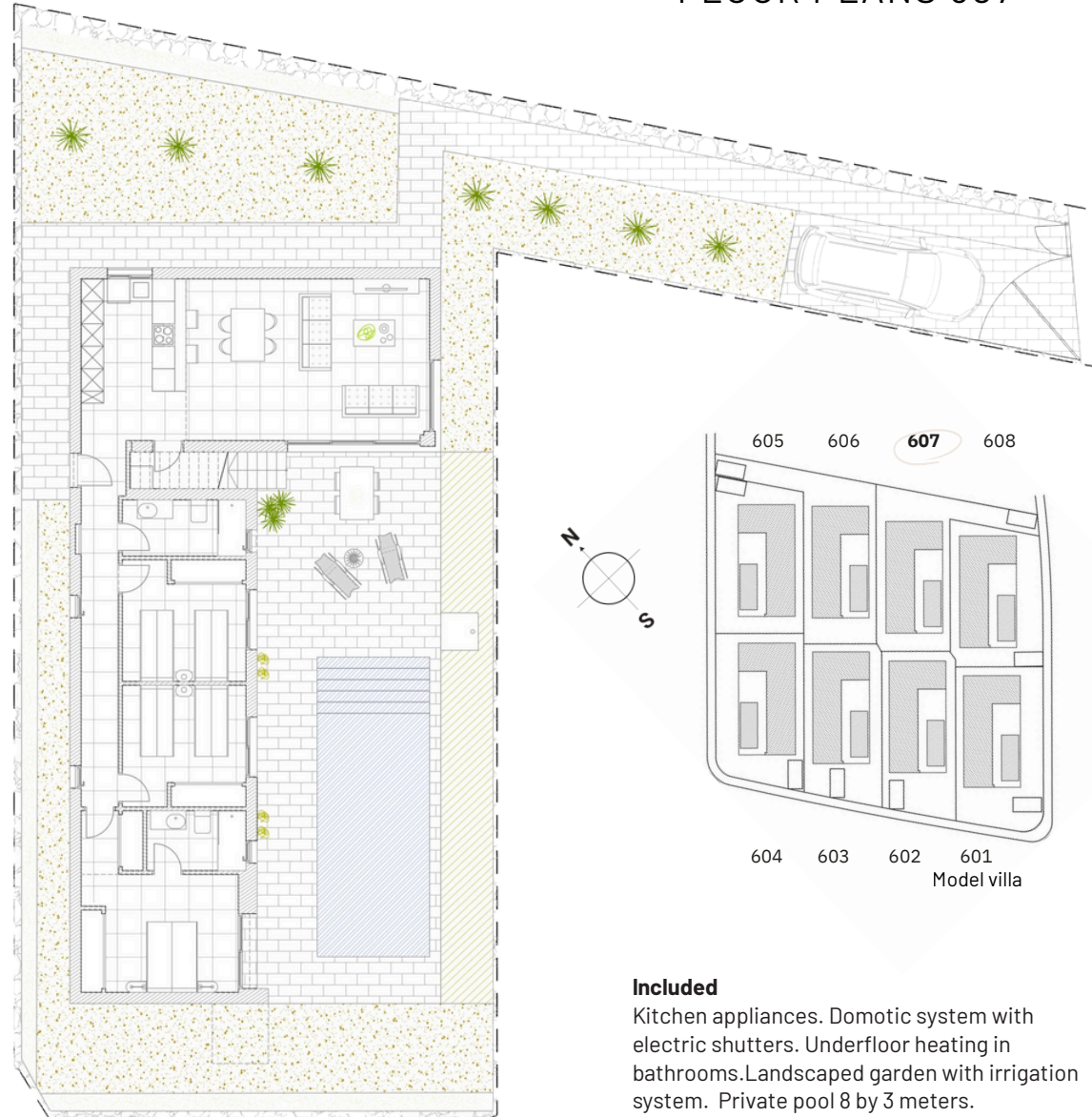
LIEGE *Mediterranea*

FLOOR PLANS 607

Num	Model	Plot Size
601	A	428,22
602	B	366,67
603	B	371,25
604	C	401,11
605	C	403,98
606	B	442,48
607	B	431,21
608	A	389,30

All measures are expressed in m²

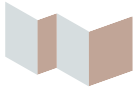
Surface area in m ²	
SCK	40,19
BEDROOM 1	15,80
BATHROOM 1	4,24
BEDROOM 2	10,70
BATHROOM 2	5,00
BEDROOM 3	10,70
HALLWAY	4,25
ACCESS	3,70
OPEN TERRACES	46,00
OPEN SOLARIUM	61,00
TOTAL USABLE LIVING SPACE	94,58
TOTAL BUILT LIVING SPACE	118,98
TOTAL BUILDABLE AREA	121,60



Included

Kitchen appliances. Domotic system with electric shutters. Underfloor heating in bathrooms. Landscaped garden with irrigation system. Private pool 8 by 3 meters.

Legal notice. All the audiovisual, graphic and written info about this Project, is only for publicity and information purposes. Lovivin won't be responsible, about all the modifications that the project may suffer until completion and delivery.



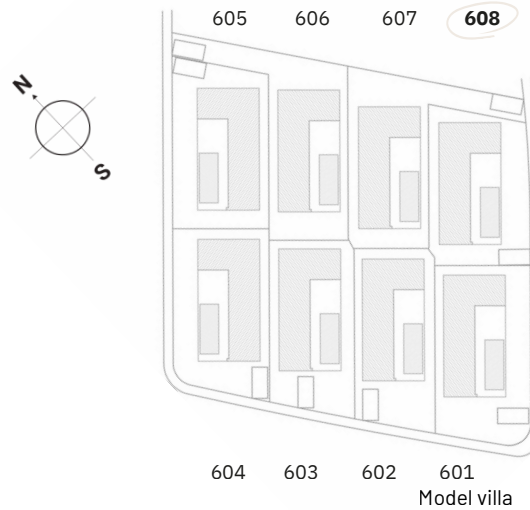
LIEGE *Mediterránea*

FLOOR PLANS 608

Num	Model	Plot Size
601	A	428,22
602	B	366,67
603	B	371,25
604	C	401,11
605	C	403,98
606	B	442,48
607	B	431,21
608	A	389,30

All measures are expressed in m²

Surface area in m ²	
SCK	40,19
BEDROOM 1	15,80
BATHROOM 1	4,24
BEDROOM 2	10,70
BATHROOM 2	5,00
BEDROOM 3	10,70
HALLWAY	4,25
ACCESS	3,70
OPEN TERRACES	46,00
OPEN SOLARIUM	61,00
TOTAL USABLE LIVING SPACE	94,58
TOTAL BUILT LIVING SPACE	118,98
TOTAL BUILDABLE AREA	121,60

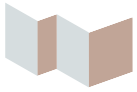


Included

Kitchen appliances. Domotic system with electric shutters. Underfloor heating in bathrooms. Landscaped garden with irrigation system. Private pool 8 by 3 meters.



Legal notice. All the audiovisual, graphic and written info about this Project, is only for publicity and information purposes. Lovivin won't be responsible, about all the modifications that the project may suffer until completion and delivery.

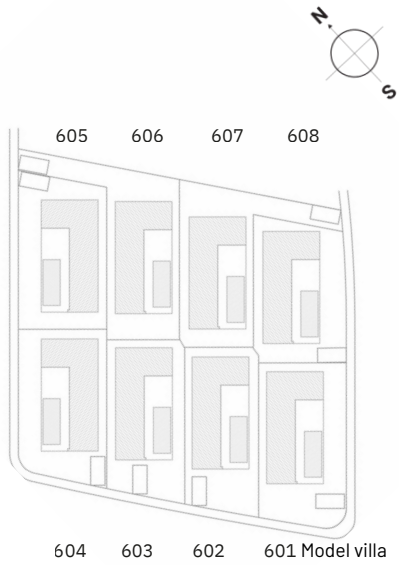


LIEGE *Mediterránea*

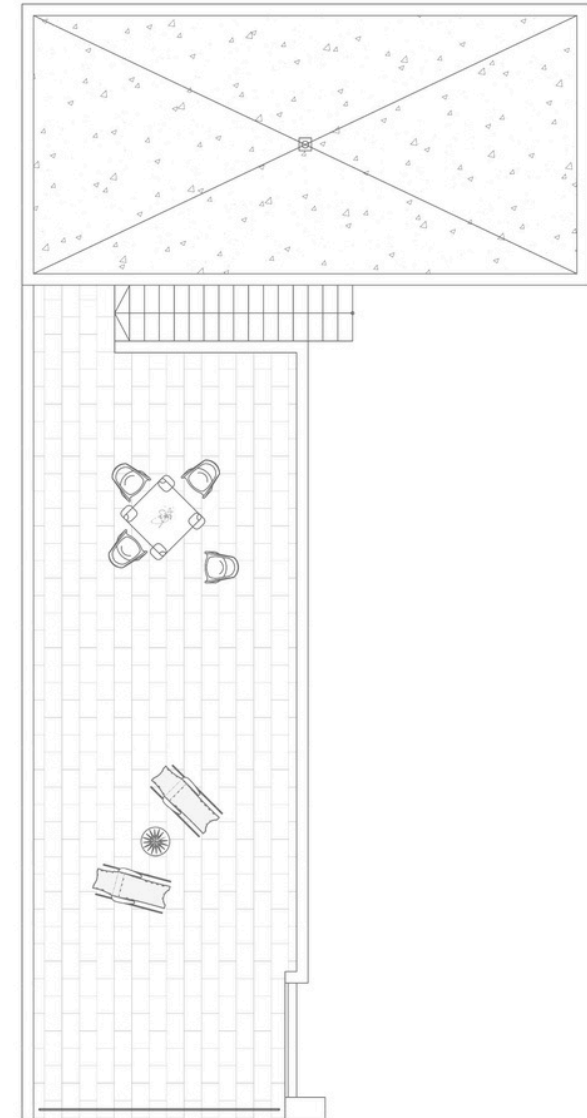
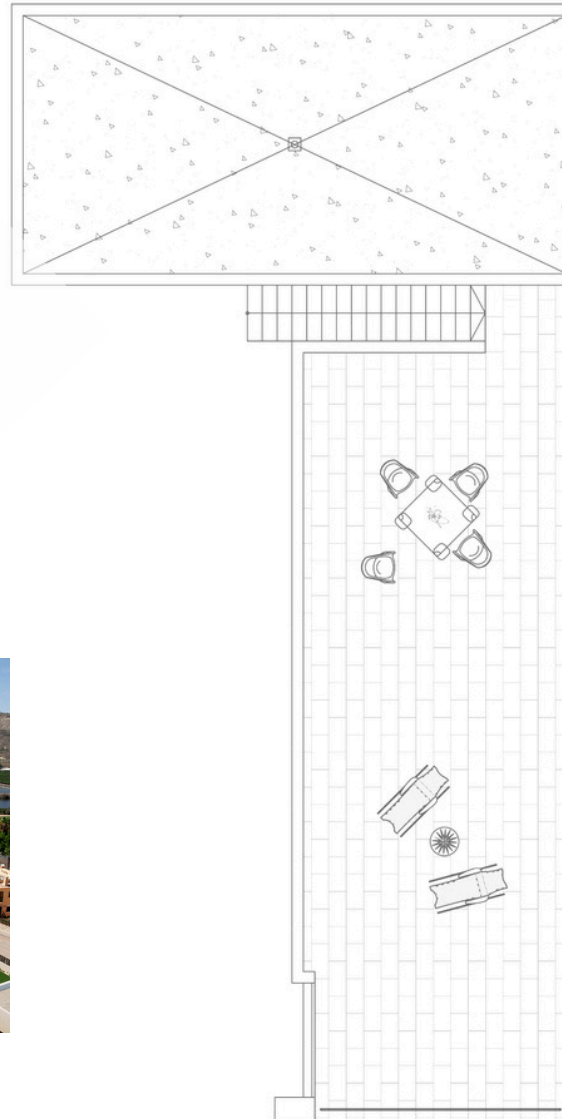
FLOOR PLANS SOLARIUM

MODEL: 604 - 605

MODEL: 601 - 602 - 603 - 604 - 606 - 607 - 608



OPEN SOLARIUM 61 M²





Lovivin



LIEGE *Mediterránea*

MEDITERRANEAN ARCHITECTURE
IN A CONTEMPORARY STYLE

8 INDEPENDENT LUXURY VILLAS

INFO & SALES

(+34) 629 170 640

nuria@thepalmgroupspain.com