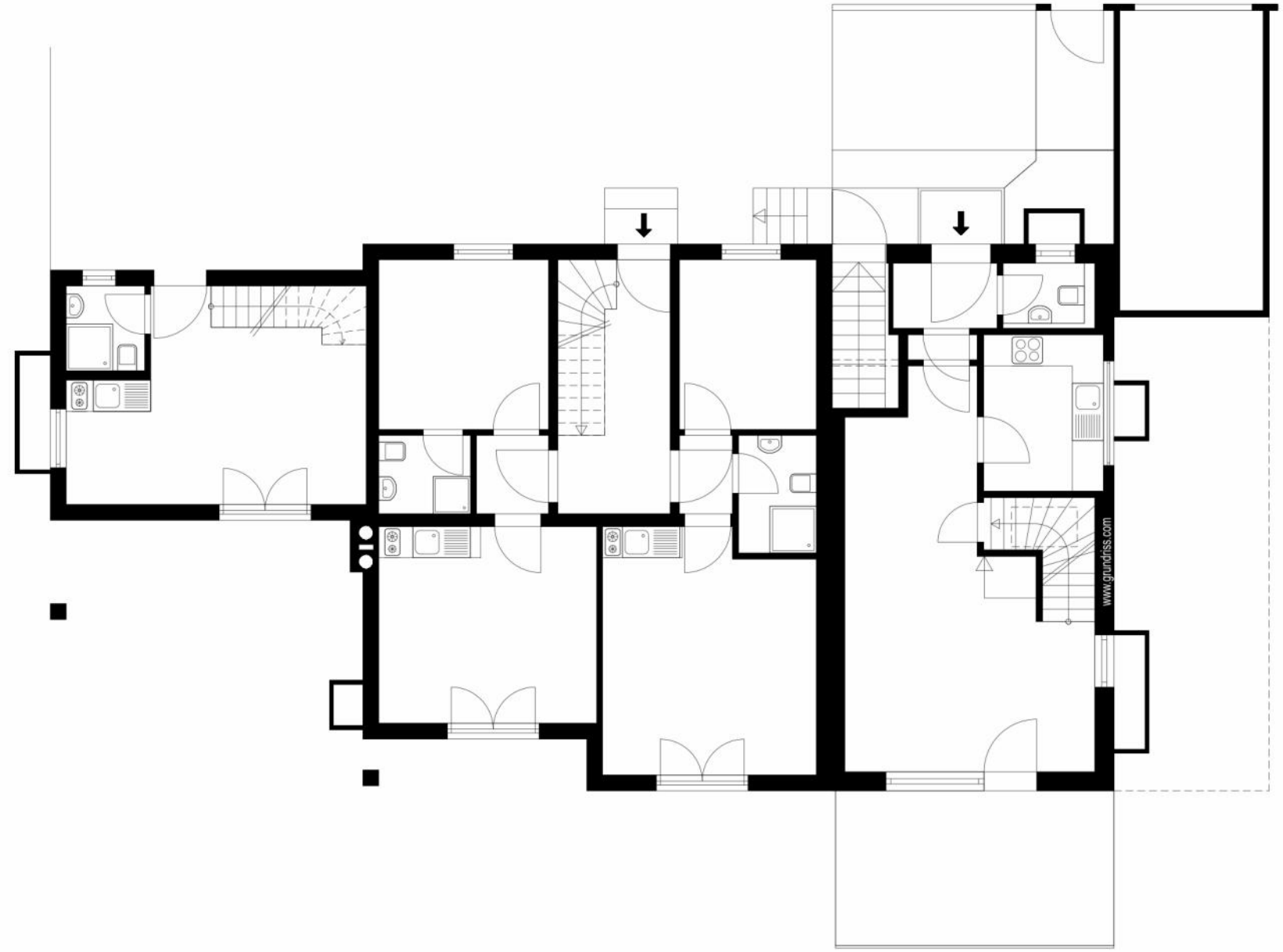


30 1.51 11.5 4.14 24 3.26 17.5 2.16 17.5 2.64 30 1.08 8 2.00 11.5 1.76 36.5

30 17.5 1.64 30 2.39 30 3.90 30 70 30



36.5 5.27 11.5 3.01 11.5 1.26 36.5

30 5.76 24 4.18 11.0 4.11 54 4.80 36.5

Erdgeschoss