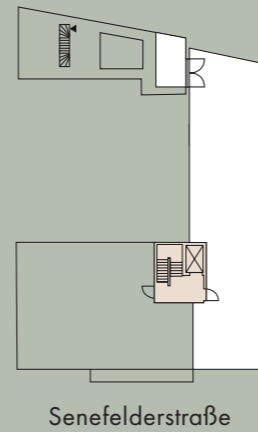


TERRACE RESIDENCE
WOHNUNG 20
TREPPENHAUS FRONT
5. OG LINKS | BARRIEREFREI
4 ZIMMER | 178,92 m²

| | | |
|-------------------------|---------------------|-----------------------------|
| Wohnküche | kitchen living room | 64,45 m ² |
| Zimmer 1 | bedroom 1 | 13,89 m ² |
| Zimmer 2 | bedroom 2 | 11,18 m ² |
| Zimmer 3 | bedroom 3 | 36,39 m ² |
| Bad 1 | bathroom 1 | 5,99 m ² |
| Bad 2 | bathroom 2 | 6,52 m ² |
| WC | WC | 3,37 m ² |
| Flur | hallway | 23,07 m ² |
| HWR | laundry storage | 3,06 m ² |
| AR | storage | 6,12 m ² |
| Terrasse* | terrace* | 19,46 m ² |
| Gesamtwohnfläche | Total Area | 178,92 m² |



*Die Balkone und Loggien sind zu 50 % und alle Terrassen sowie Privatgärten sind zu 25 % in die Wohnfläche eingerechnet.

*The balconies and loggias are factored into the floor area at a ratio of 50% and the terraces and privat gardens at a ratio of 25 %.



Front Staircase

APT. 20

178,92 m²

3-bedroom Apartment | barrier free

Senefelderstraße 21 | Terrace Residence | 5th floor left

