

**NEUBAU EINFAMILIENHAUS  
MIT EINLIEGERWOHNUNG**

**EINGABEPLAENE M = 1:100**

**BAUHERR : JUERGEN BERNAUER  
7859 EIMELDINGEN  
VOGESENSTR. 3**

**BAUORT : 7859 EIMELDINGEN  
SCHAFACKERWEG  
KREIS LOERRACH**

|                              |                           |             |
|------------------------------|---------------------------|-------------|
| <b>BEARBEITER:</b><br>KOENIG | <b>DATUM:</b><br>05.12.84 | <b>GEA:</b> |
|------------------------------|---------------------------|-------------|

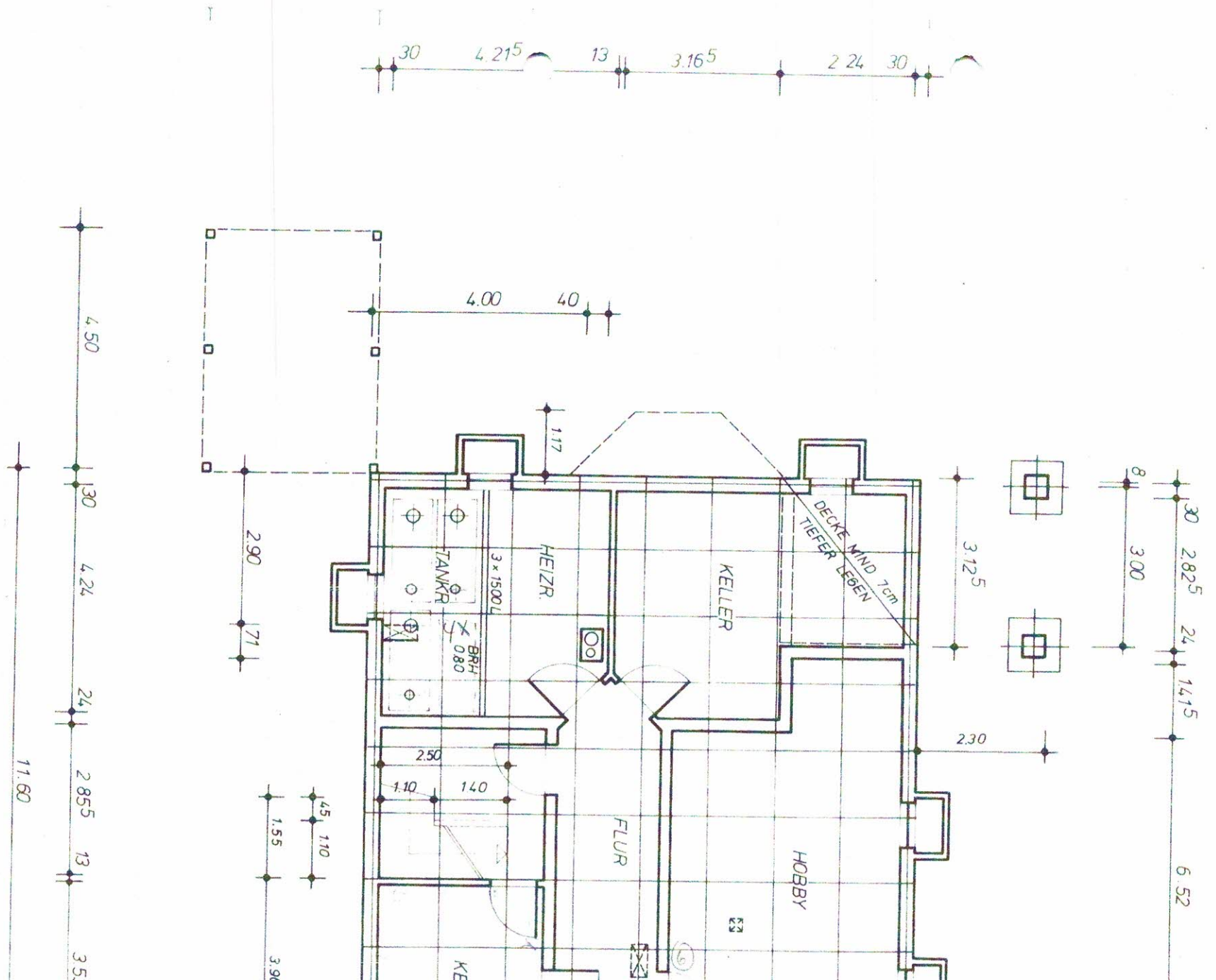
**HANS WEBER FERTIGHAUSBAU GMBH 7597**

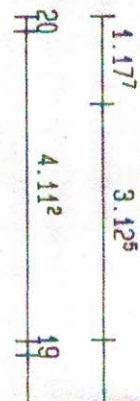
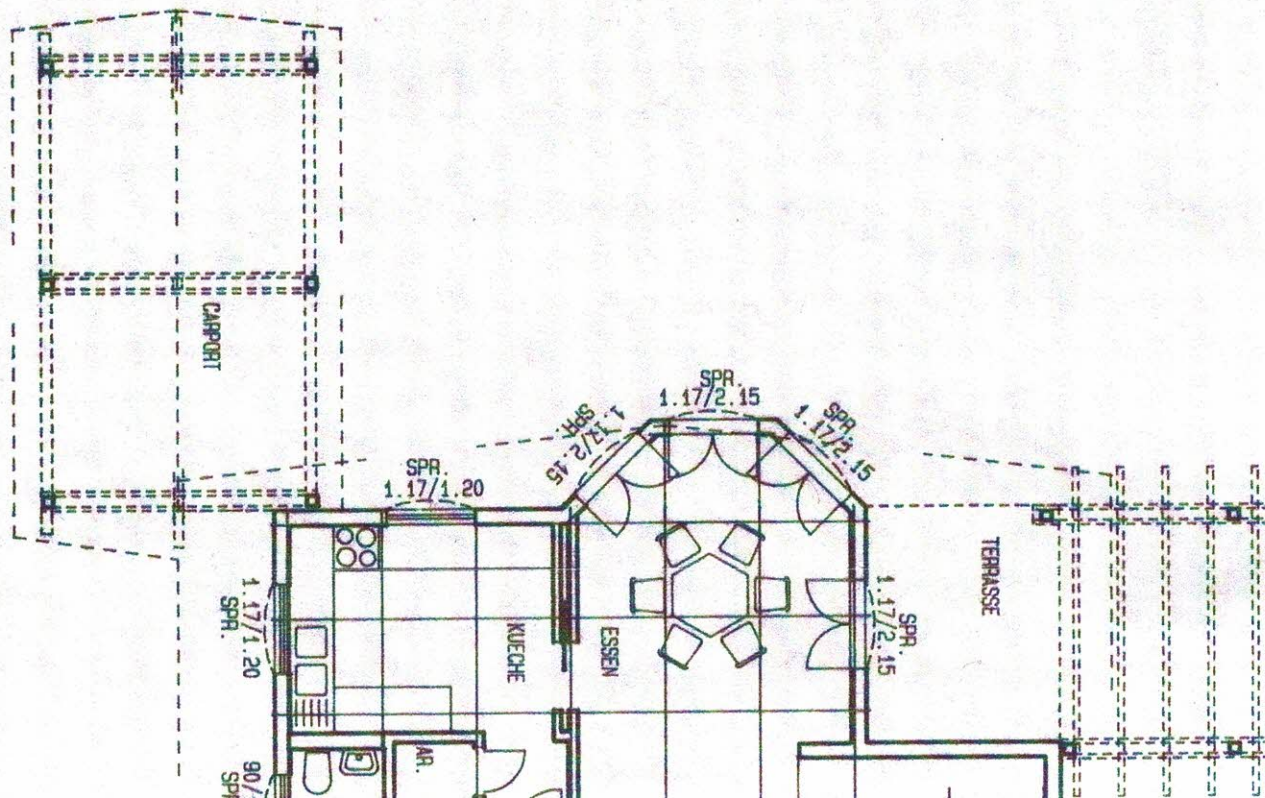
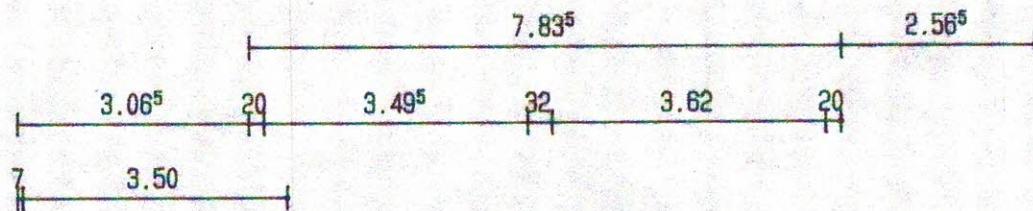
Bar  
Lbr





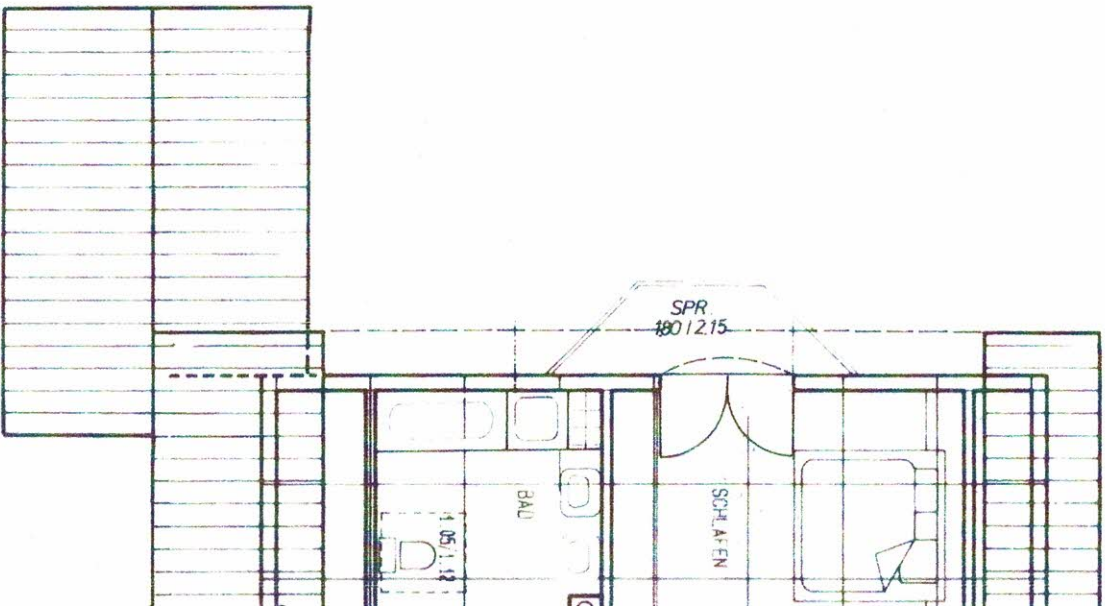
# KELLERGESCHOS





ERD

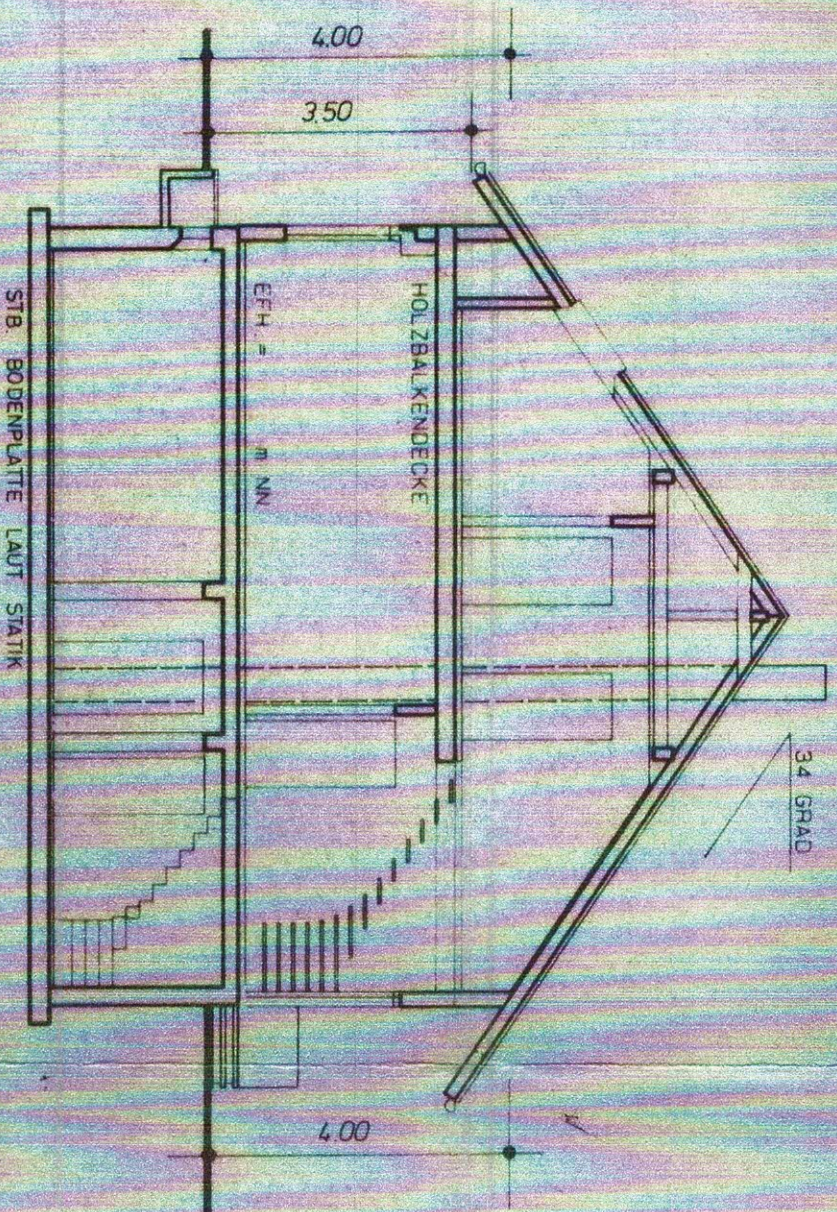
201.18<sup>5</sup> 13 2.99<sup>5</sup> 13 4.66 13.77 20



DACHGESCH

20 4.31  
1.17 3  
20 4.11<sup>2</sup>

20 4.31



SCHNITT A-A

STB. BODENPLATTE LAUF STATIK

EFH = m NN

HOLZBALKENDECKE

34 GRAD

4.00

3.50

4.00