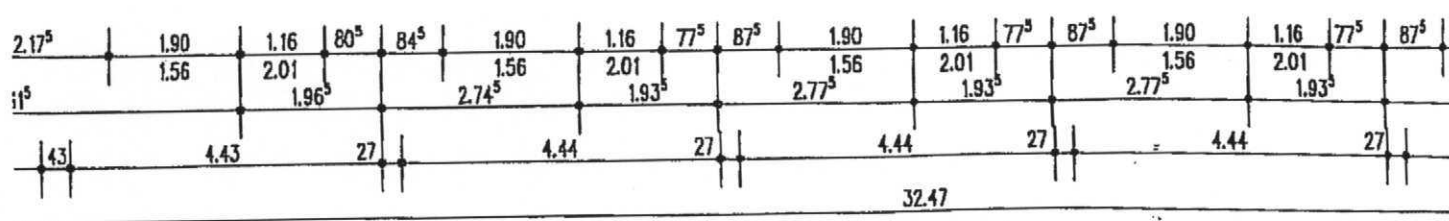
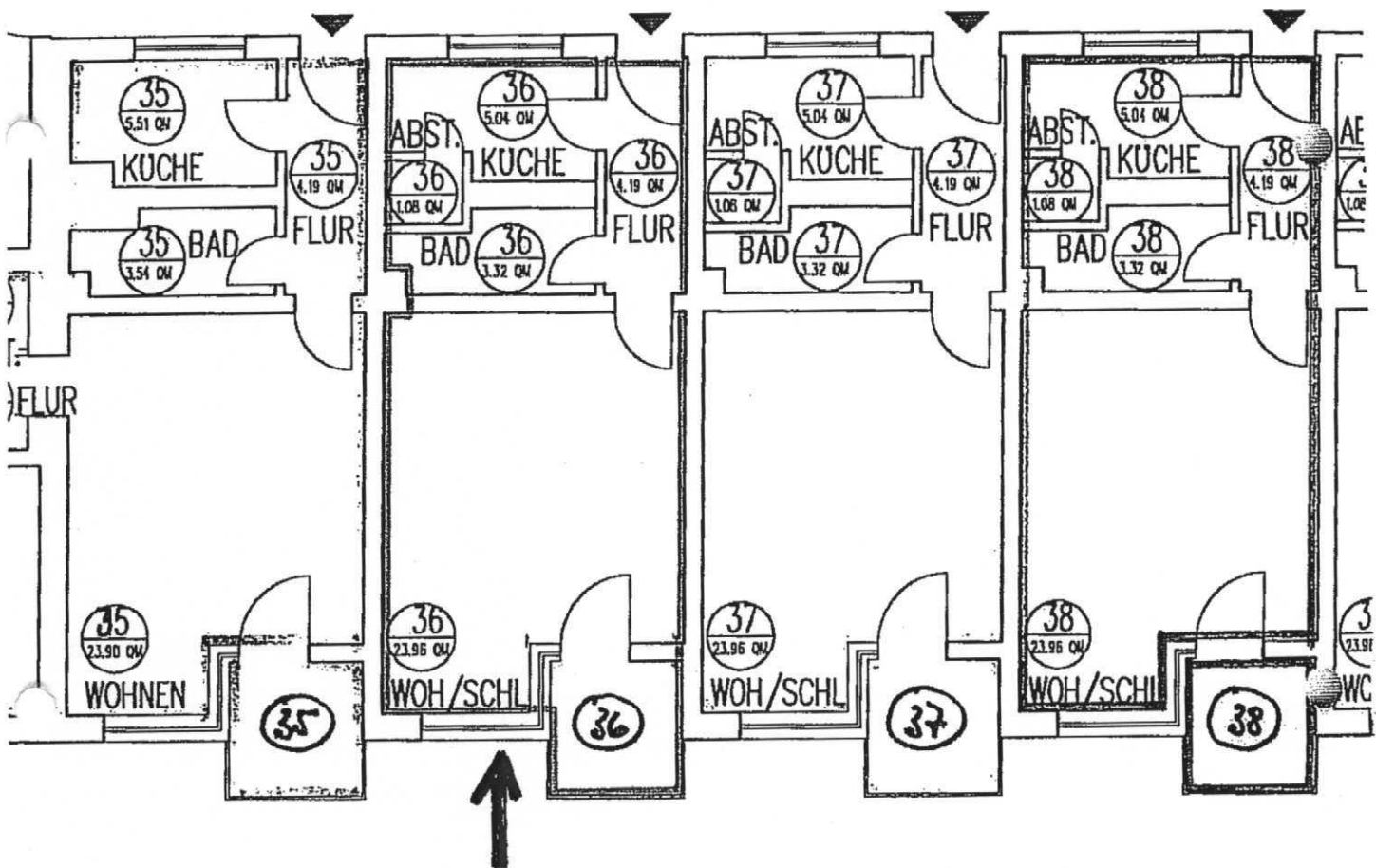
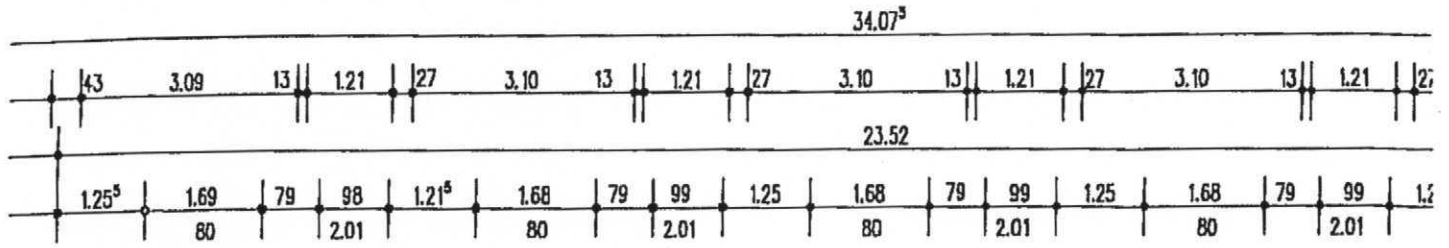
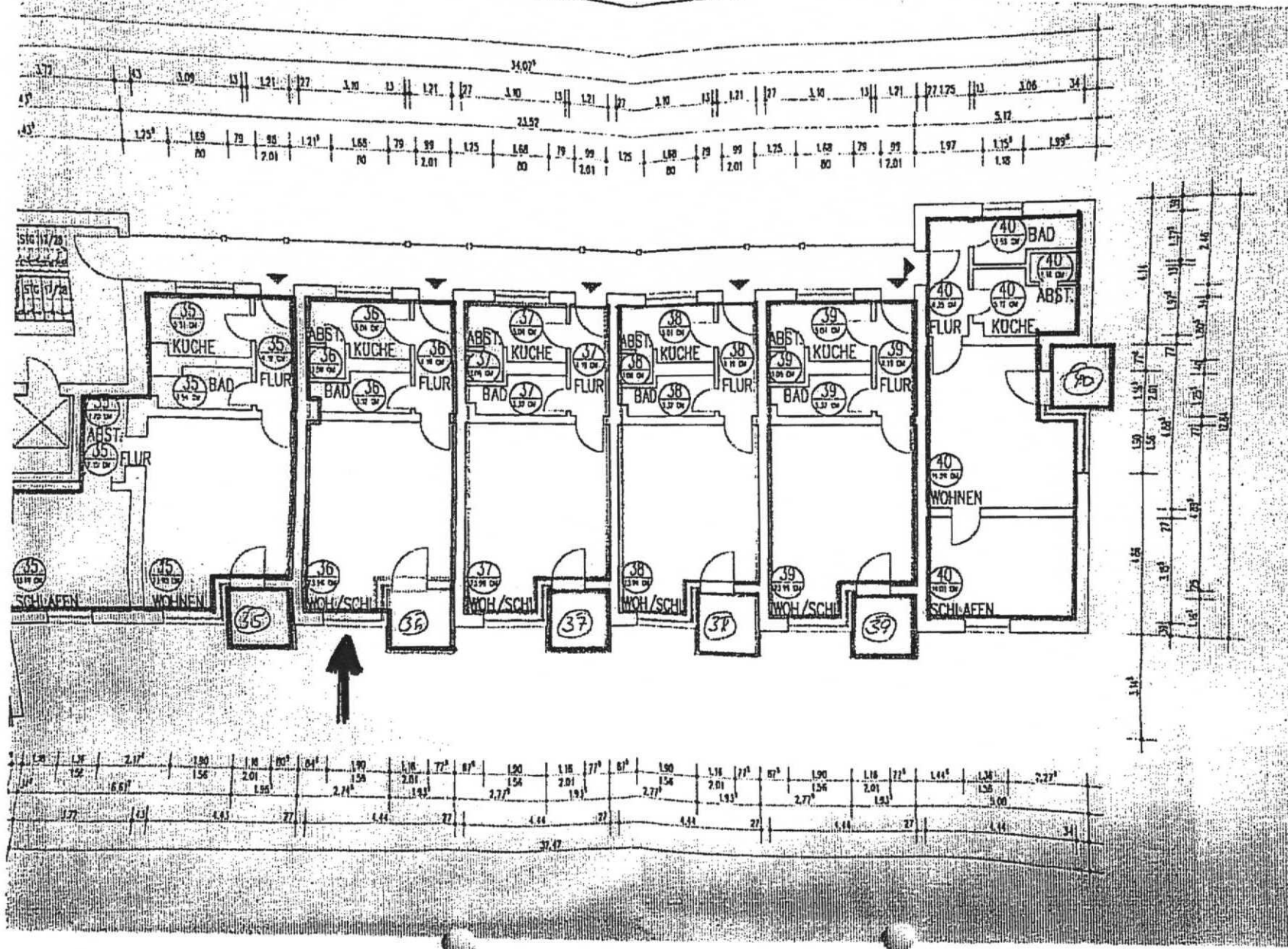
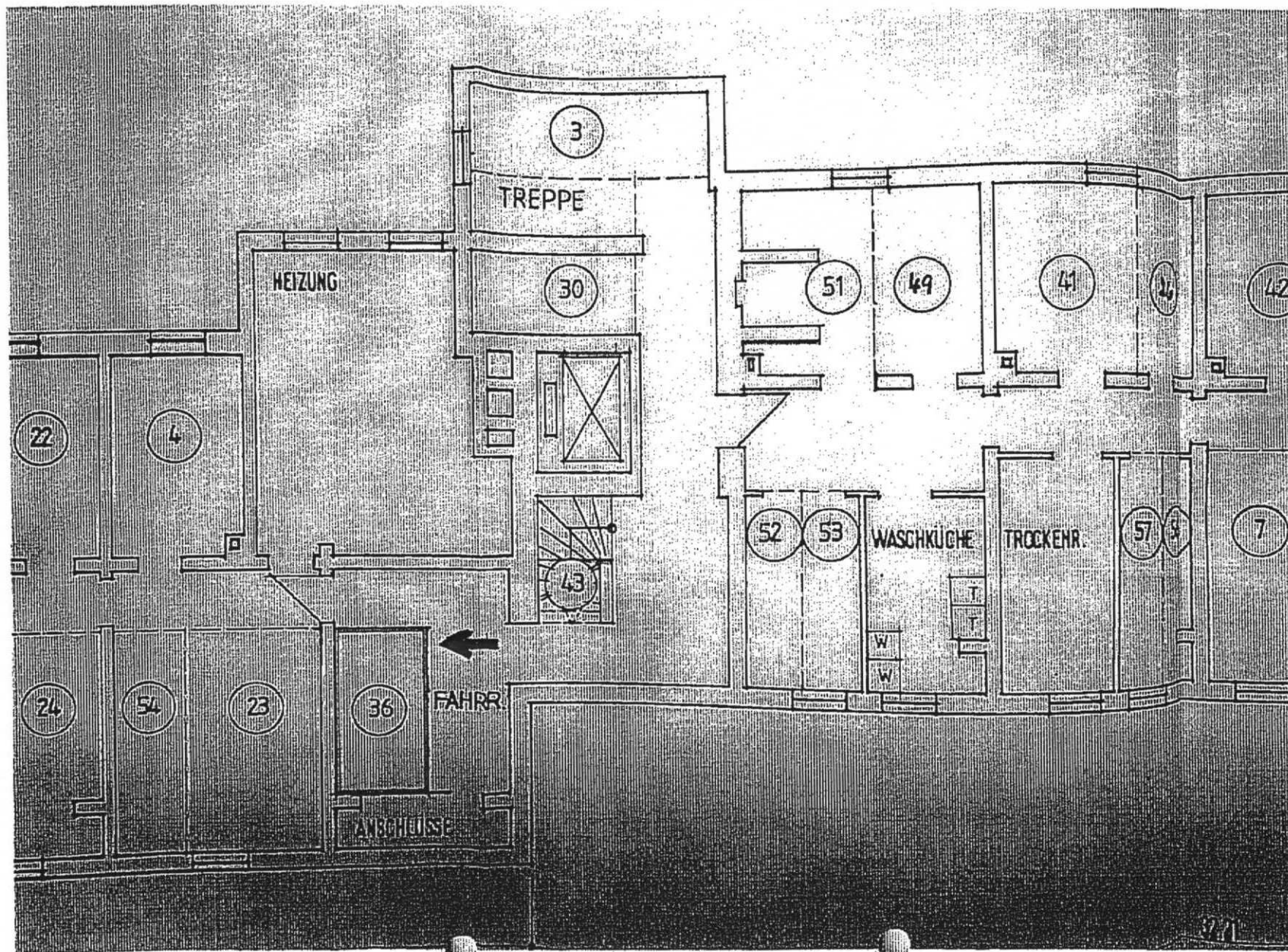


Anlage 3:
 Grundriss Wohnung
 (Whg. 36 - rot gekennzeichn.)





Anlage 4:
 Grundriss 3. OG - rechts
 (Wmg. 36 - rot gekennzeichnet.)



Anlage 5:
 Grundriss Keller
 (Keller 36 - rot gekennzeichnet.)

37/1