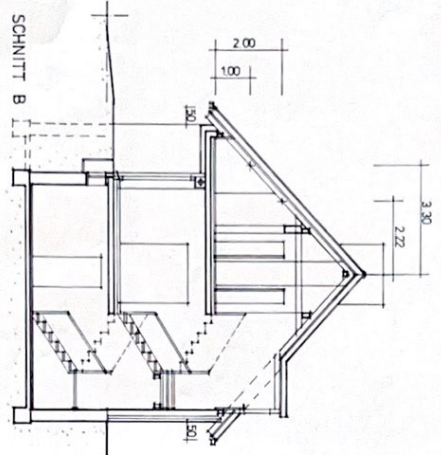
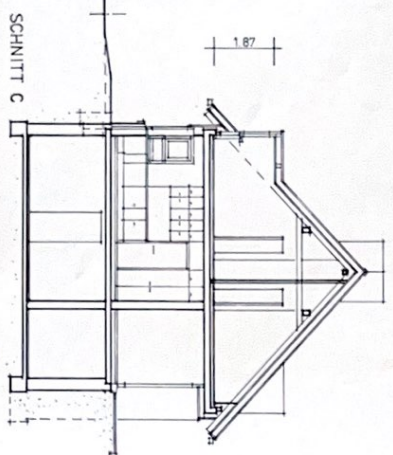


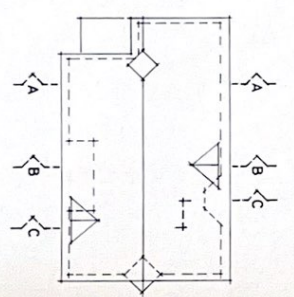
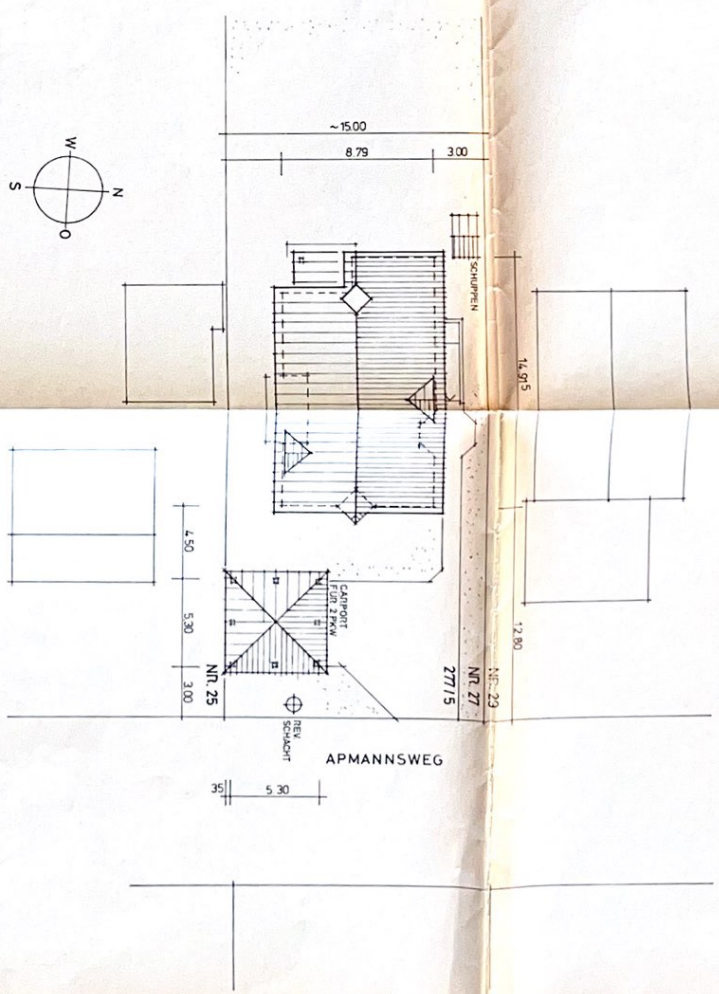
14 16 2.515 18 12.5



12 17 14 16 18 12.5 187
19 2.22 30 2.515 30.5 2.58
2.52 2.82 -7.60 50



7 2.22 30 2.515 16 12.5



SCHNITTE	1 : 100	HAUS TIETZ
LAGEPLAN	1 : 200	BLATT A 3
BAUHERREN	HELGA UND HARALD TIETZ STONSDORFER WEG 15 B 2000 NORDERSTEDT	ARCHITEKT DIPL.-ING. HANS AHNERT OHLSORFER STR. 89 2000 HAMBURG 60 TELEFON 511 90 37
15.3.12		14.3.82
<i>Herrn Helg. Stögers Tietz</i>		<i>Herrn Ahnert</i>