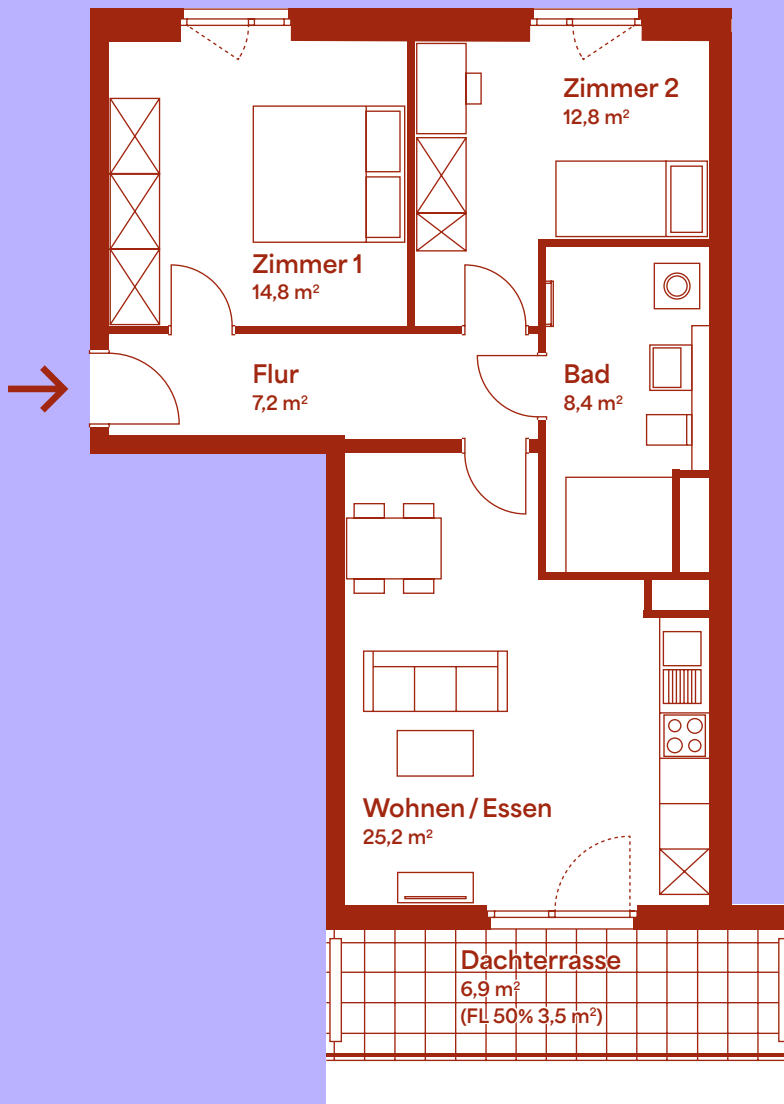


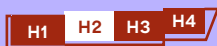
# Wohneinheit 31

4. Obergeschoss | Haus 2 | 3 Zimmer

# ROTEN BLEICHER

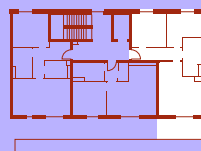


## LAGEPLAN



H5

## 4. OBERGESCHOSS



## ANSICHT WEST



Haus 1 Haus 2 Haus 3

|                    |                     |
|--------------------|---------------------|
| Zimmer 1           | 14,8 m <sup>2</sup> |
| Zimmer 2           | 12,8 m <sup>2</sup> |
| Flur               | 7,2 m <sup>2</sup>  |
| Bad                | 8,4 m <sup>2</sup>  |
| Wohnen / Essen     | 25,2 m <sup>2</sup> |
| Dachterrasse (50%) | 3,5 m <sup>2</sup>  |

**Grundfläche ca. 71,9 m<sup>2</sup>**