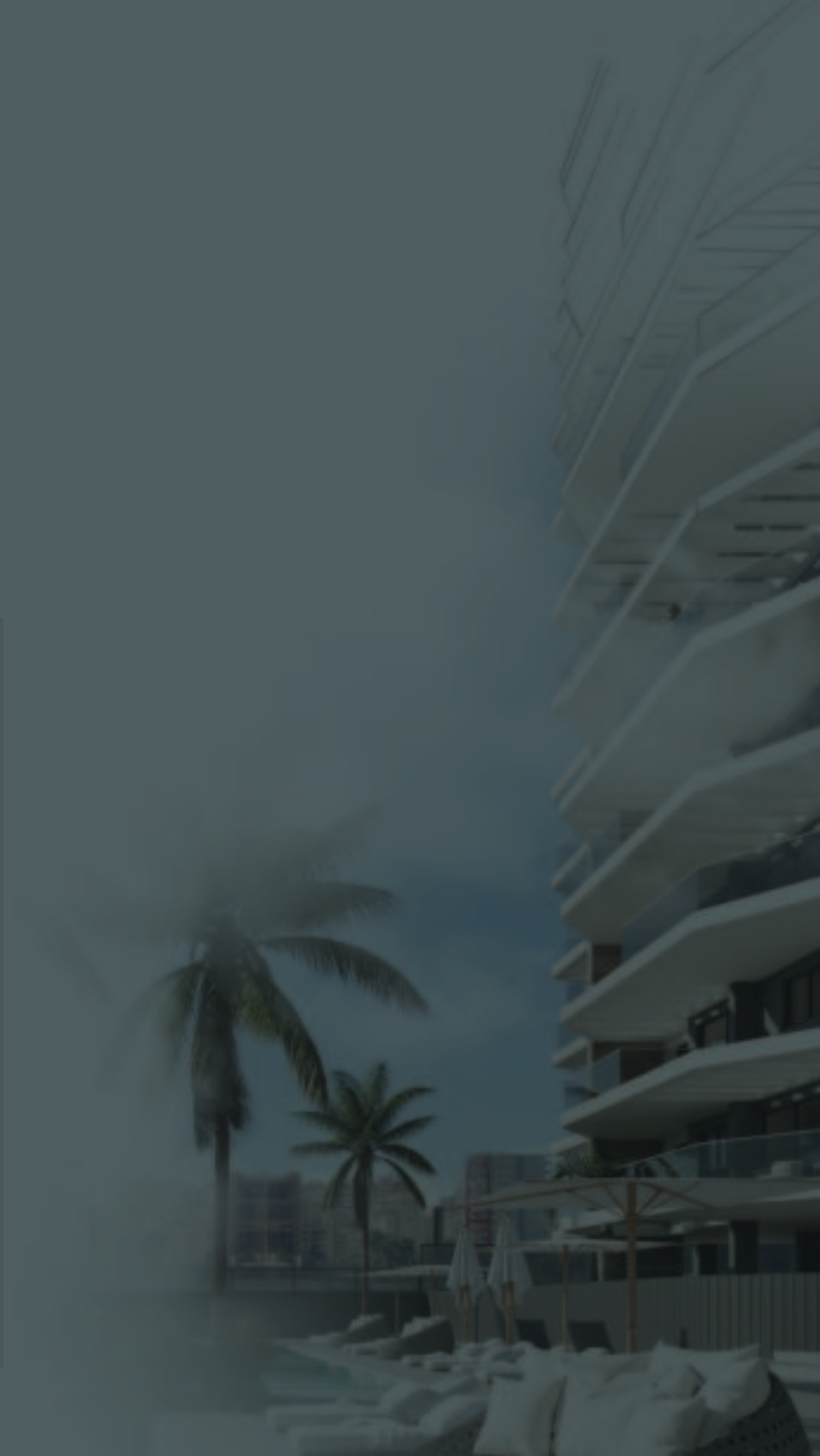


A modern rooftop terrace with a view of a city and a large rock formation. The terrace features two white wicker armchairs with white cushions, a round white coffee table, and a potted plant. The background shows a cityscape with a prominent rock formation and a blue sky.

own your  
*dreams*



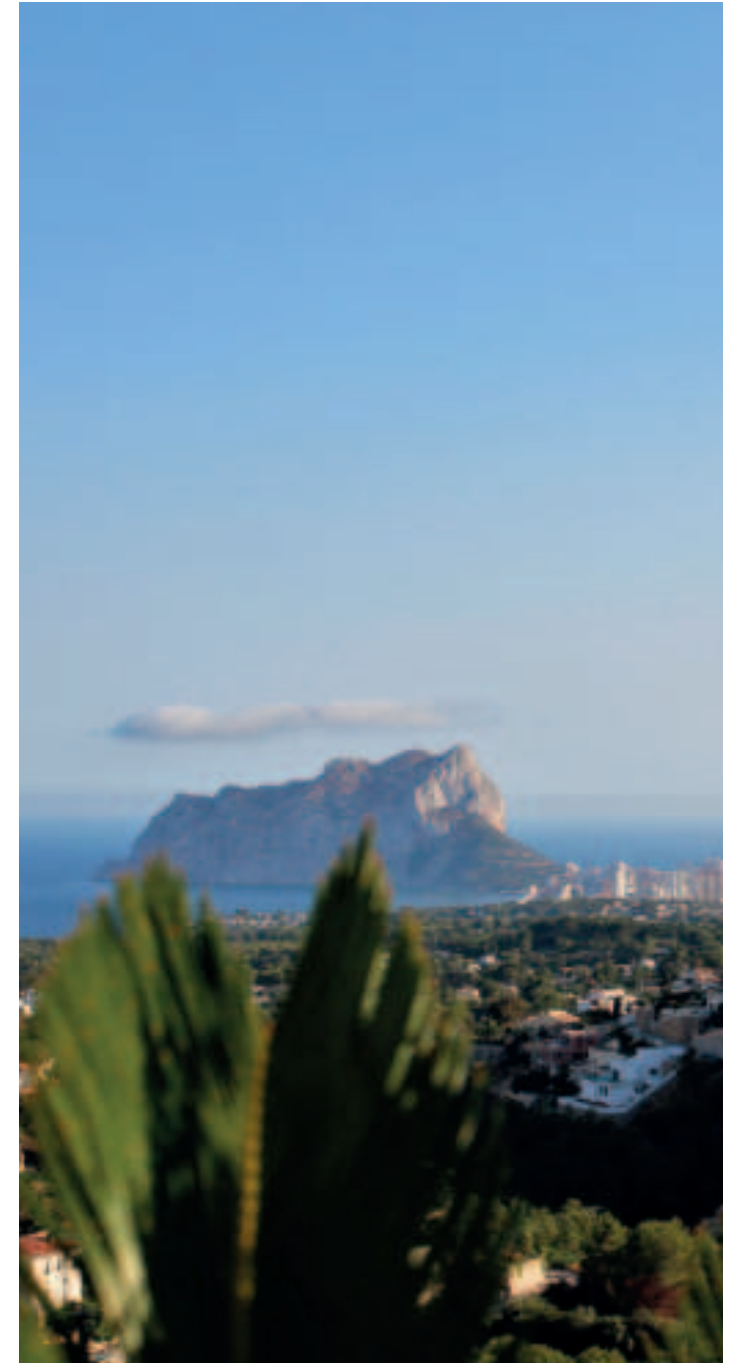
## THE SURROUNDING AREA

# Calpe

Can you imagine being able to enjoy the Mediterranean breeze, fine sand, and crystal-clear waters as soon as you open the door? **Here**, we are less about dreaming and more about making them come true. Making them a reality. And Calpe is the best place to start doing it. Not only because its beaches are certified with the "Q" for Quality and the Blue Flag, but also because of its excellent microclimate, its flora, its fauna, and its incredible location where water sports and activities are already part of the landscape. Escaping to nature from time to time is not the same as being able to live in its midst, surrounded by natural parks and up close with migratory birds such as flamingos, coots, Audouin's gulls, storks... and this is only the beginning of what you can discover in the Natural Park of Las Salinas.

Yes, falling in love every day is possible when you are able to admire the views and landscapes of Calpe. Panoramic views that you can enjoy from the highest point of the Peñón de Ifach, where your eyes can take in the Serra Gelada Natural Park, the protected landscape of Puig Campana and the Sierra de Aitana; the Morro de Toix linked by the Mascarat to the Sierra de Bernia and the Sierra de Oltà; Pedramala, the Montgó Natural Park, the Puig de la Llorença, the Cape of Moraira and on the clearest days even the island of Ibiza.

*Where do we start?*







## LOCATION

# All services

Stop dreaming. Because just 200 metres from **us** you will find the golden sand of the Arenal beach, a small step away from the fishing port at the foot of El Peñón, very close to the town centre and Las Salinas.

A genuine piece of the Mediterranean at your fingertips. You also have at your disposal all kinds of shops, medical services, and a wide range of leisure and restaurant facilities. Here, the most difficult thing is deciding which dream to make real.

Double-height terraces, natural light, fantastic views...  
It's no fantasy, it's **real**. A rebirth of architectural lines,  
carefully designed, with a Mediterranean feel and set in  
an incomparable environment.

**A true paradise halfway between nature and the city.**









## THE COMMON AREAS

# Spaces where you can share your dreams

Spaces where you can share your dream:

1. Beach pool
2. Kid's pool
3. Children's play area
4. Lounger areas
5. Bicycle parking
6. Padel tennis courts
7. Common rooms
8. WC







## THE HOMES

# Welcome to the life you dreamed of

The tranquillity of a present where your home is close to the coast. Or of a future far from the coast, but living in its tranquillity.

### **You choose.**

Because **these** apartments are conceived to encompass an entire dream through their careful, comfortable, and flexible design, in case you feel like walking through the door. Their two towers of bright apartments with two and three bedrooms exist solely for you.



## GENERAL FINISHES

**We have** top quality porcelain floors.  
Top quality exterior carpentry with thermal bridge break to achieve the best comfort and energy efficiency. Automated control of blinds and air conditioning.

### Can you think of anything else?

Perfect. Tell us your ideas. We'll try to make them a reality. Customisation options available on request.





## KITCHEN

### **The ingredient you need to make your dream come true**

All our different types of homes include large kitchens which open to the living room. They have high and low furniture fronts, with self-braking system. Oven column and integrated electrical appliances (fridge, oven, microwave, induction hob and extractor hood), worktop and kitchen front in the same material.

Customisation options available.

## BATHROOM

**A piece of paradise  
in every corner**

Our bathrooms feature top quality porcelain tiles. Vitrified porcelain wall-hung sanitary ware.

Also, large-format white resin showers that include a shower screen.





A collection of material samples including stone, wood, and fabric swatches. At the top, there are four rectangular stone tiles with a speckled pattern. Below them is a large, irregularly shaped stone slab with a reddish-brown and white interior. In the center, there is a piece of weathered wood with a circular metal knob. To the right of the wood are four square color swatches in shades of grey, blue, and brown. At the bottom, there is a piece of light-colored wood with a wavy grain and a piece of burlap fabric.

## CUSTOMISATION AND IMPROVEMENTS

**Here**, you will find the home you were dreaming of. Each room has been designed in detail to allow you enjoy the sun, the sea and luxury finishes.

## CUSTOMISATION AND IMPROVEMENTS



Kitchen worktops  
and fronts



Different flooring  
options



Customisation of  
wall colours



Different options  
for bathroom  
cladding



Airzone air  
conditioning system  
improvements\*



Improvement  
on basic home  
automation pack\*

\* Improvements at customer's request to be budgeted for

## TYPE A APT.

### 3 bedrooms



1. ENTRANCE	s.u. 3,15 m2
2. LIVING/DINING ROOM-KITCHEN	s.u. 28,15 m2
3. HALLWAY	s.u. 2,75m2
4. BEDROOM 01	s.u. 11,60 m2
5. BEDROOM 02	s.u. 9,20 m2
6. BEDROOM 03	s.u. 8,60 m2
7. BATHROOM 01	s.u. 3,35 m2
8. BATHROOM 02	s.u. 4,65 m2

**Total indoor floor area** 71,45 m2

TERRACE 1 s.u. 16,60 m2

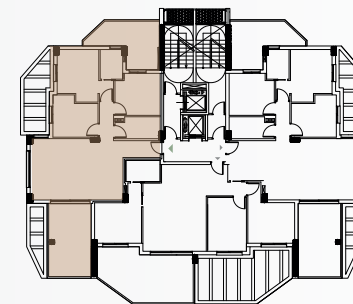
TERRACE 2 s.u. 13,05 m2

**Total terrace floor area** 29,65 m2

Constructed area apt. s.u. 83,10 m2

Terrace area s.u. 29,65 m2

**TOTAL BUILT** 112,75 m2



# TYPE B APT.

## 3 bedrooms



1. LIVING-DINING ROOM-KITCHEN	s.u. 29,40 m2
2. BEDROOM 01	s.u. 10,90 m2
3. BEDROOM 02	s.u. 10,90m2
4. BEDROOM 03	s.u. 10,50 m2
5. HALLWAY	s.u. 1,30 m2
6. BATHROOM 01	s.u. 3,65 m2
7. BATHROOM 02	s.u. 3,50 m2

Total indoor floor area **70,15 m2**

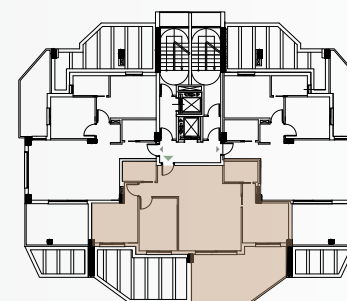
TERRACE s.u. 23,70 m2

Total terrace floor area **23,70 m2**

Constructed area apt. s.u. 80,25 m2

Terrace area s.u. 23,70 m2

**TOTAL BUILT 103,95 m2**



ESCALA



## TYPE C APT.

### 2 bedrooms



1. ENTRANCE	s.u. 3,10 m <sup>2</sup>
2. LIVING-DINING ROOM-KITCHEN	s.u. 27,90 m <sup>2</sup>
3. HALLWAY	s.u. 2,40m <sup>2</sup>
4. BEDROOM 01	s.u. 11,85 m <sup>2</sup>
5. BEDROOM 02	s.u. 9,60 m <sup>2</sup>
6. BATHROOM 01	s.u. 3,70 m <sup>2</sup>
7. BATHROOM 02	s.u. 3,60 m <sup>2</sup>

**Total indoor floor area** 62,15 m<sup>2</sup>

TERRACE 1 s.u. 14,10 m<sup>2</sup>

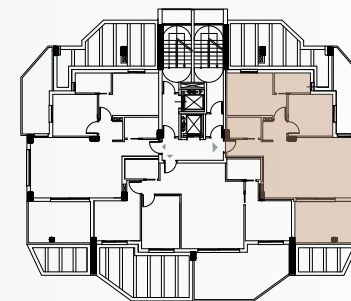
TERRACE 2 s.u. 11,75 m<sup>2</sup>

**Total terrace floor area** 25,85 m<sup>2</sup>

Constructed area apt. s.u. 72,35 m<sup>2</sup>

Terrace area s.u. 25,85 m<sup>2</sup>

**TOTAL BUILT** 98,20 m<sup>2</sup>



ESCALA



# PENTHOUSE A

## 3 bedrooms



1. LIVING-DINING ROOM-KITCHEN	s.u.	45,25 m <sup>2</sup>
2. HALLWAY	s.u.	3,75 m <sup>2</sup>
3. BEDROOM 01	s.u.	11,60 m <sup>2</sup>
4. BEDROOM 02	s.u.	9,20 m <sup>2</sup>
5. BEDROOM 03	s.u.	8,60 m <sup>2</sup>
6. BATHROOM 01	s.u.	3,35 m <sup>2</sup>
7. BATHROOM 02	s.u.	4,00 m <sup>2</sup>

Total indoor floor area **85,75 m<sup>2</sup>**

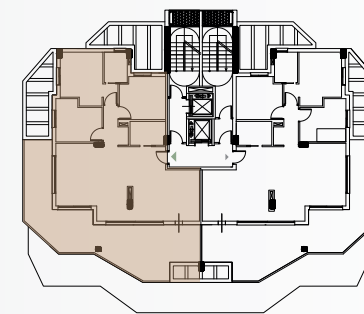
TERRACE s.u. 45,60 m<sup>2</sup>

Total terrace floor area **45,60 m<sup>2</sup>**

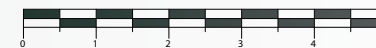
Constructed area apt. s.u. 98,40 m<sup>2</sup>

Terrace area s.u. 45,60 m<sup>2</sup>

**TOTAL BUILT 144,00 m<sup>2</sup>**



ESCALA





A BUILDING THAT TAKES CARE OF YOU

# Find the right balance.

The breeze and the Mediterranean Sea will become part of your daily life, integrated into a careful architectural design where you will enjoy an environmental balance.



## QUALITY

We work with the leading brands on the market



## INNOVATION

DHW production system with aerothermal energy for an efficient home installation.



## EFFICIENCY

Thermally and acoustically insulated enclosures and partitions for greater comfort.





# Payment methods

**6.000€ + VAT**

at the time of booking

**First payment**

on signature of the purchase agreement (consult %)

**Remainder**

on completion and handover of your home

