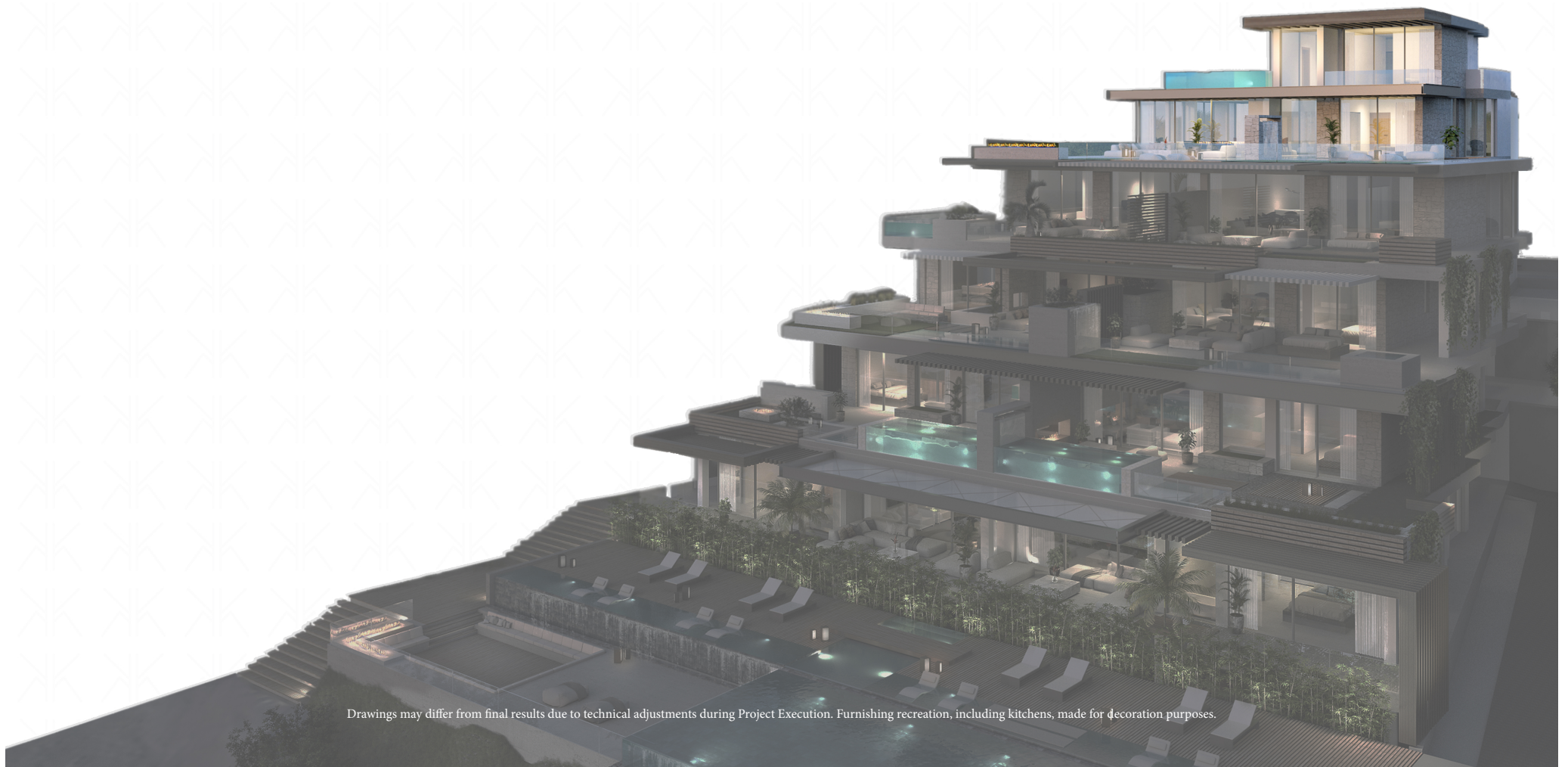
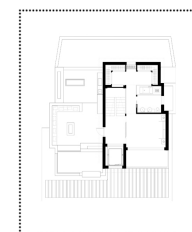
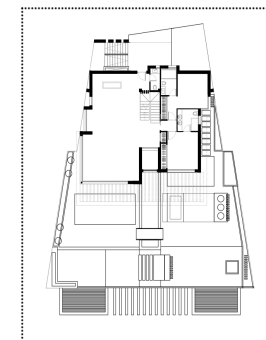
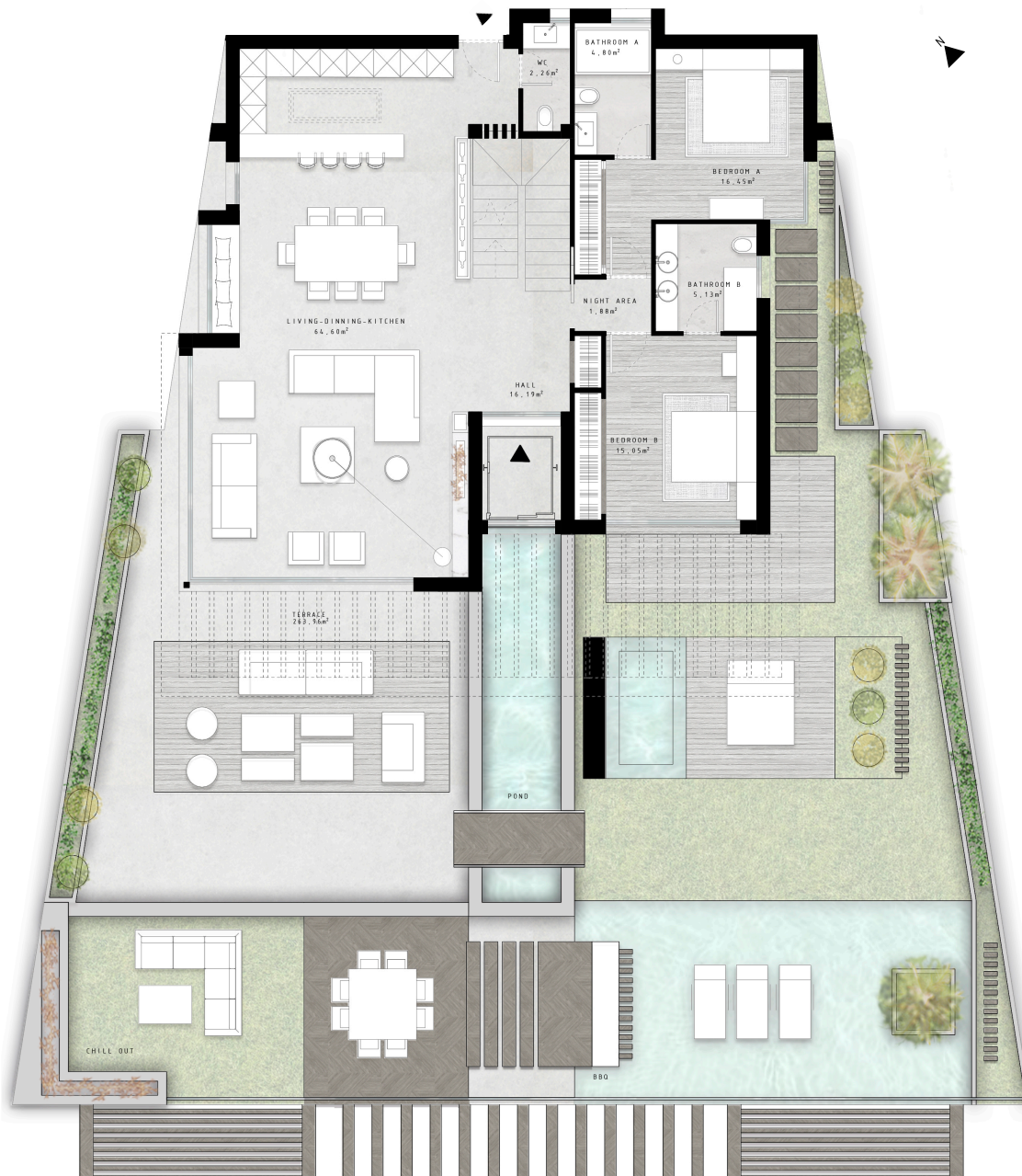


PENTHOUSE, level 1



Drawings may differ from final results due to technical adjustments during Project Execution. Furnishing recreation, including kitchens, made for decoration purposes.



PENTHOUSE, LEVEL 1

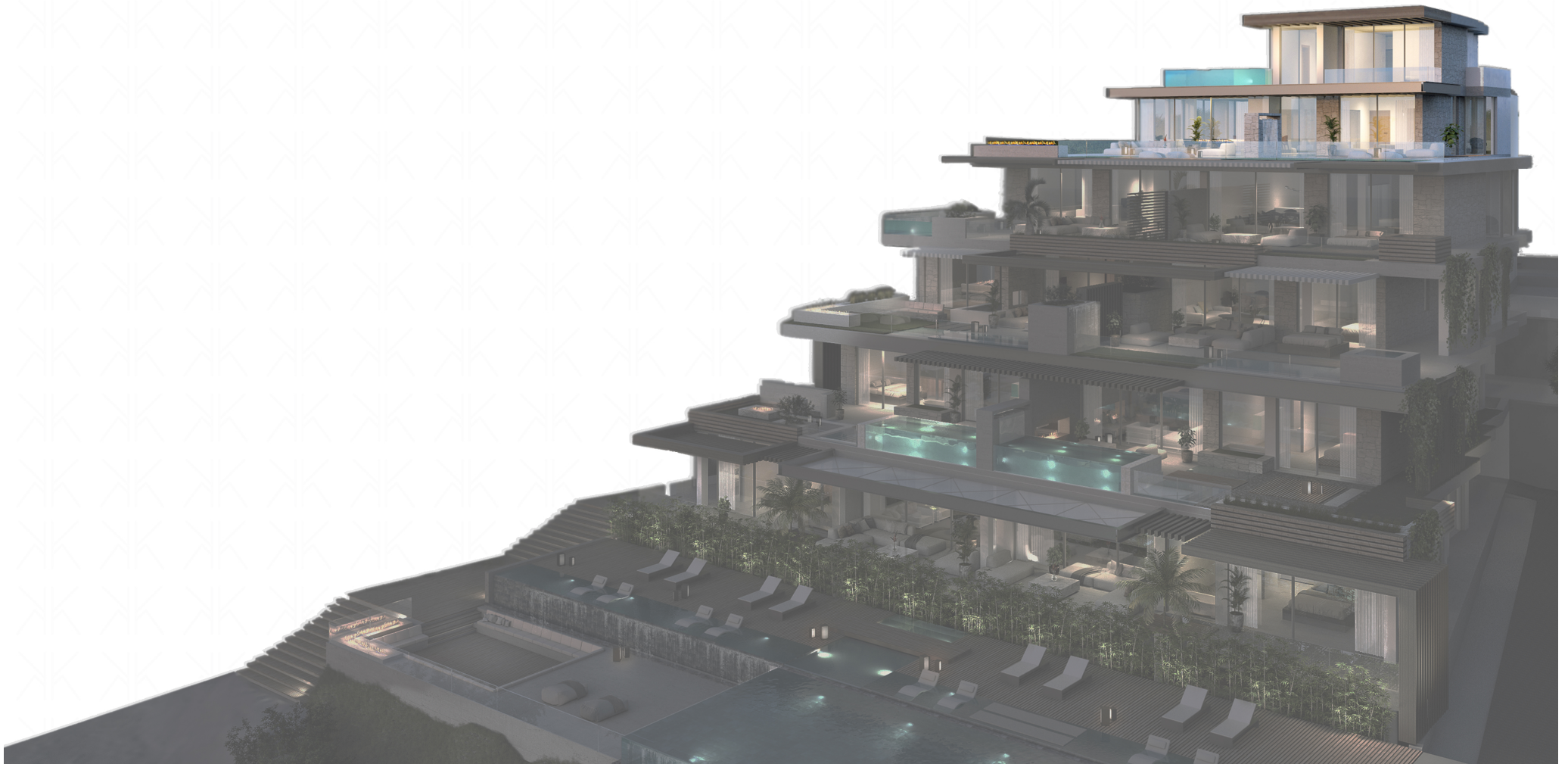
Interior: 145,83 m²
Terrace: 263,96 m²

TOTAL BUILT SURFACE LEVEL 1: 409,79 m²



Drawings may differ from final results due to technical adjustments during Project Execution. Furnishing recreation made for decoration purposes.

PENTHOUSE, level 2

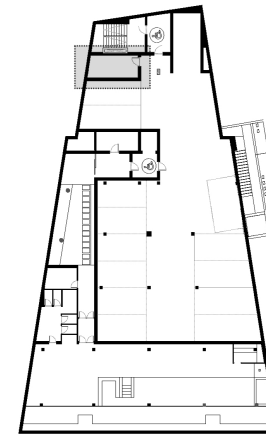




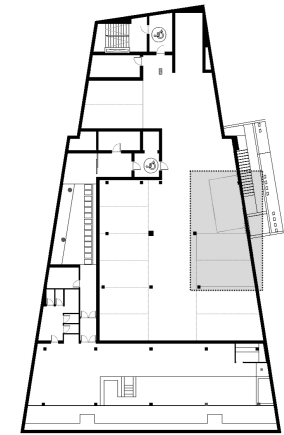
PENTHOUSE, LEVEL 2

Interior: 57,47 m²
Terrace: 80,17 m²

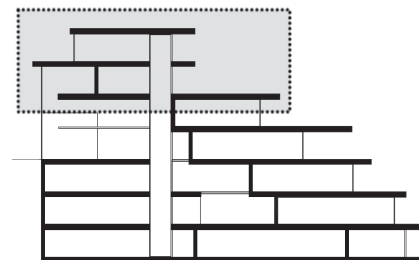
TOTAL BUILT SURFACE LEVEL 2: 137,64 m²



STORAGE ROOM
floor -3



GARAGE
floor -3



Penthouse

Interior: 203,30 m²
Terrace: 344,13 m²

TOTAL BUILT SURFACE: 547,43 m²

* Usable Surface according to Real Decreto 218/2005: 349,25 m²

Storage room: 12,84 m²
Garage 1: 32,10 m²
Garage 2: 18,63 m²

*This apartment come with three garage parking spaces.

Mediterranean Sea