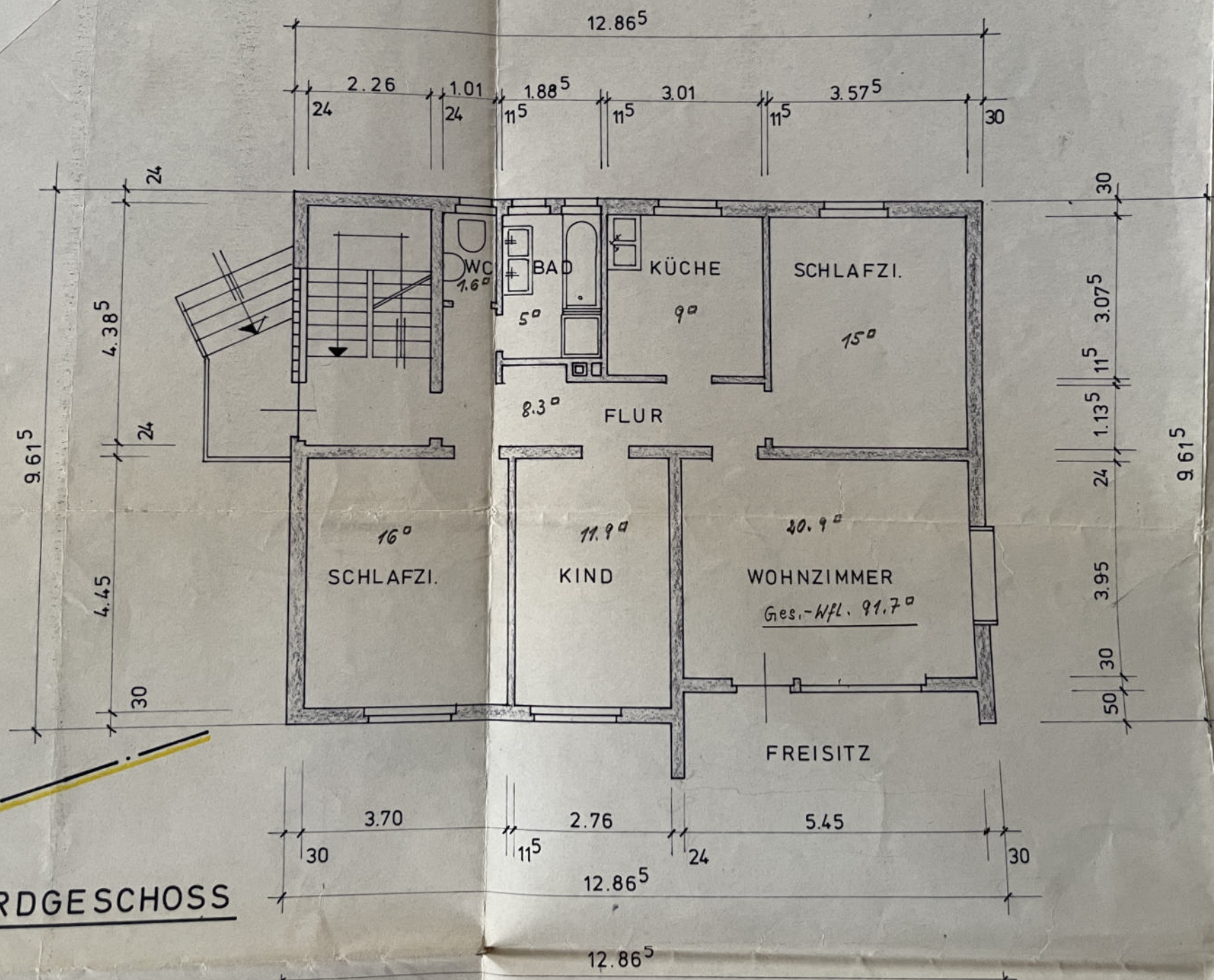
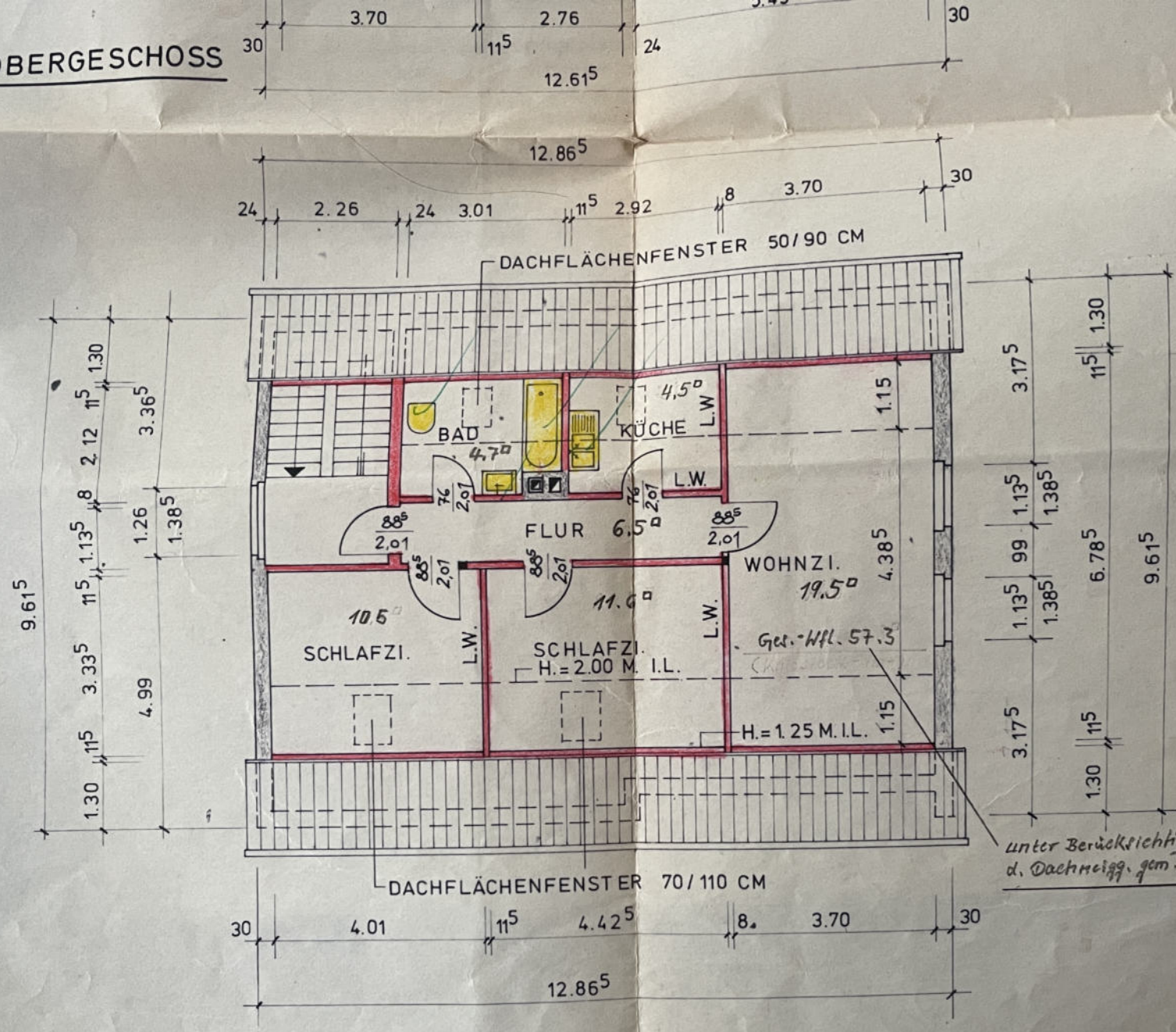


ERDGESCHOSS



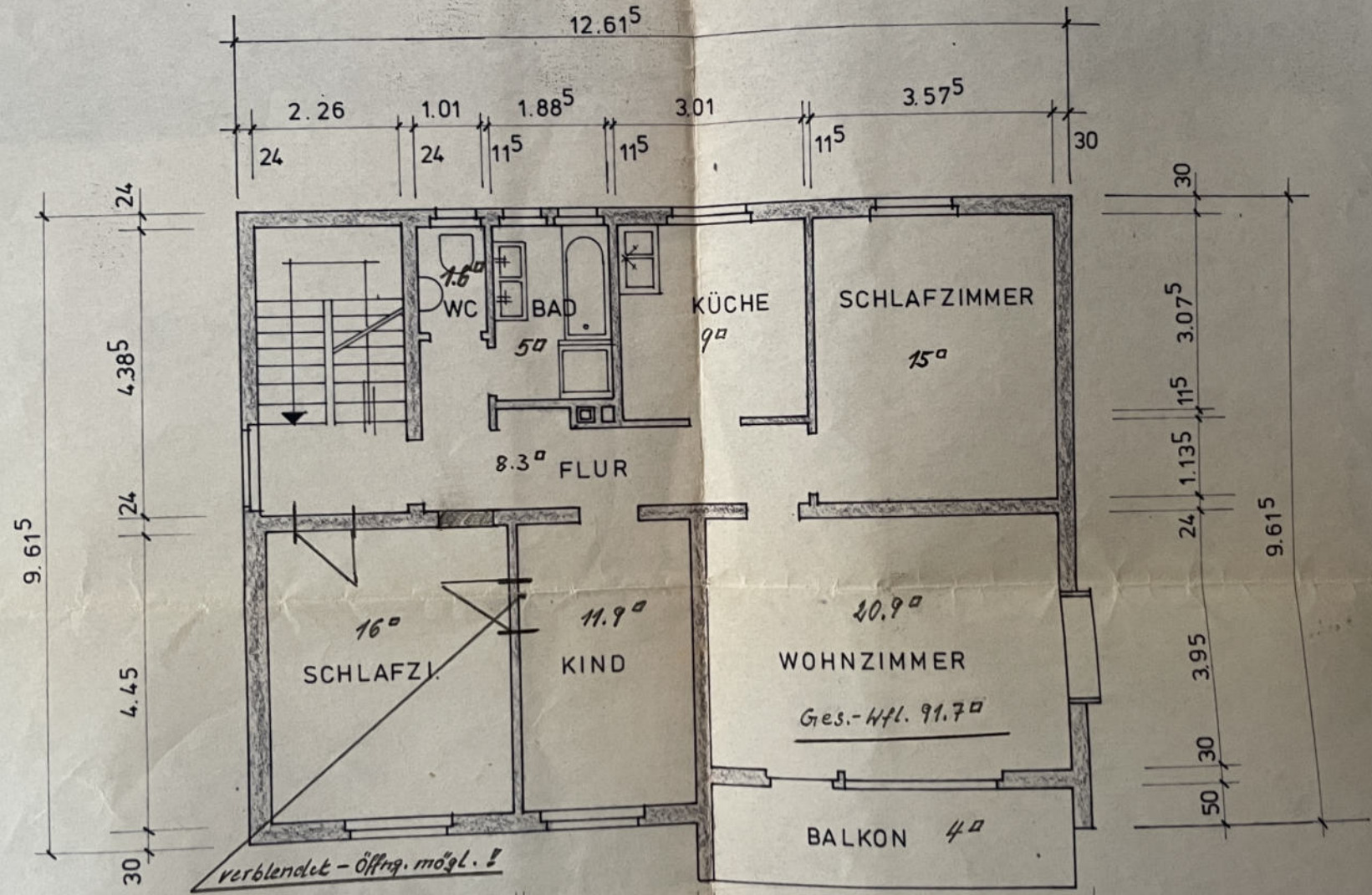
1. OBERGESCHOSS



*unter Berücksichtigung
d. Dachneigg. gem. DIN*

DACHGESCHOSS

ENTLÜFT



1. OBERGESCHOSS

30

3.70

2.76

5.45

12.61⁵

12.86⁵

11⁵

24

30

9.61⁵

4.45

24

4.38⁵

24

9.61⁵

3.95

30

50

3.07⁵

11⁵

24

1.13⁵

30

12.61⁵

2.26

1.01

1.88⁵

3.01

3.57⁵

24

24

11⁵

11⁵

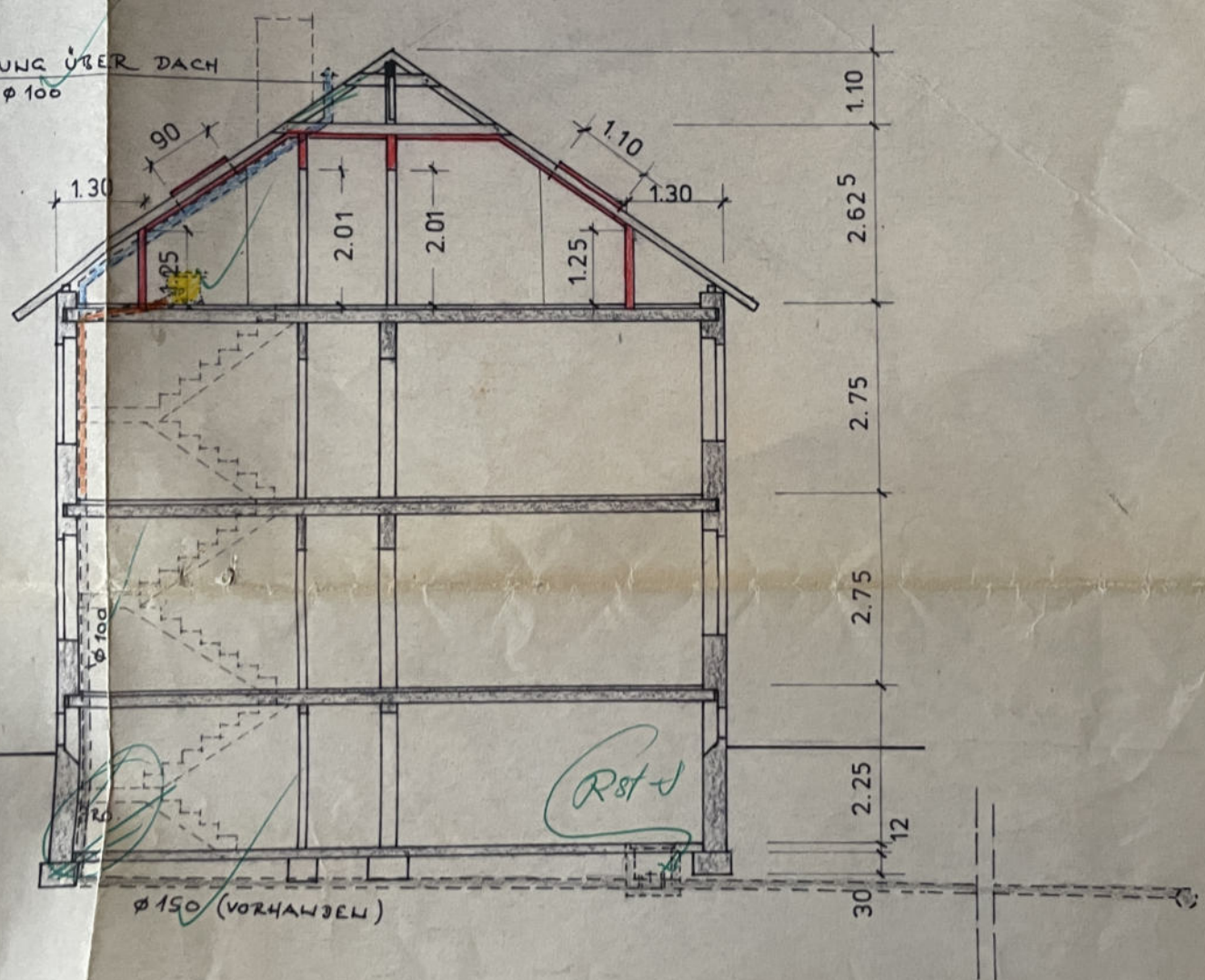
11⁵

30

30

verblendet - Öffnung mögl. !

ENTLÜFTUNG ÜBER DACH
Ø 100



QUERSCHNITT

immer

DE N
NITRO
SAT