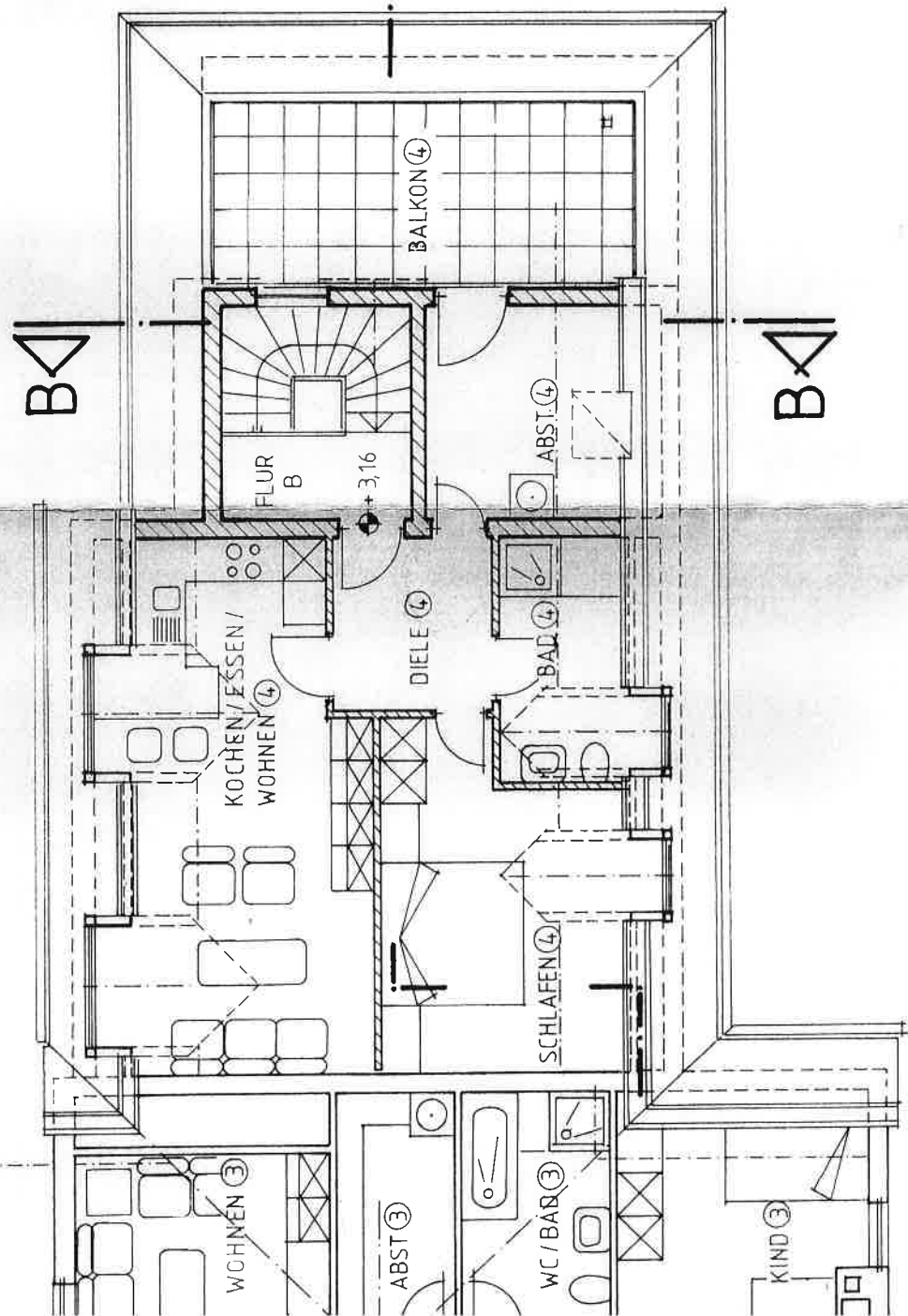


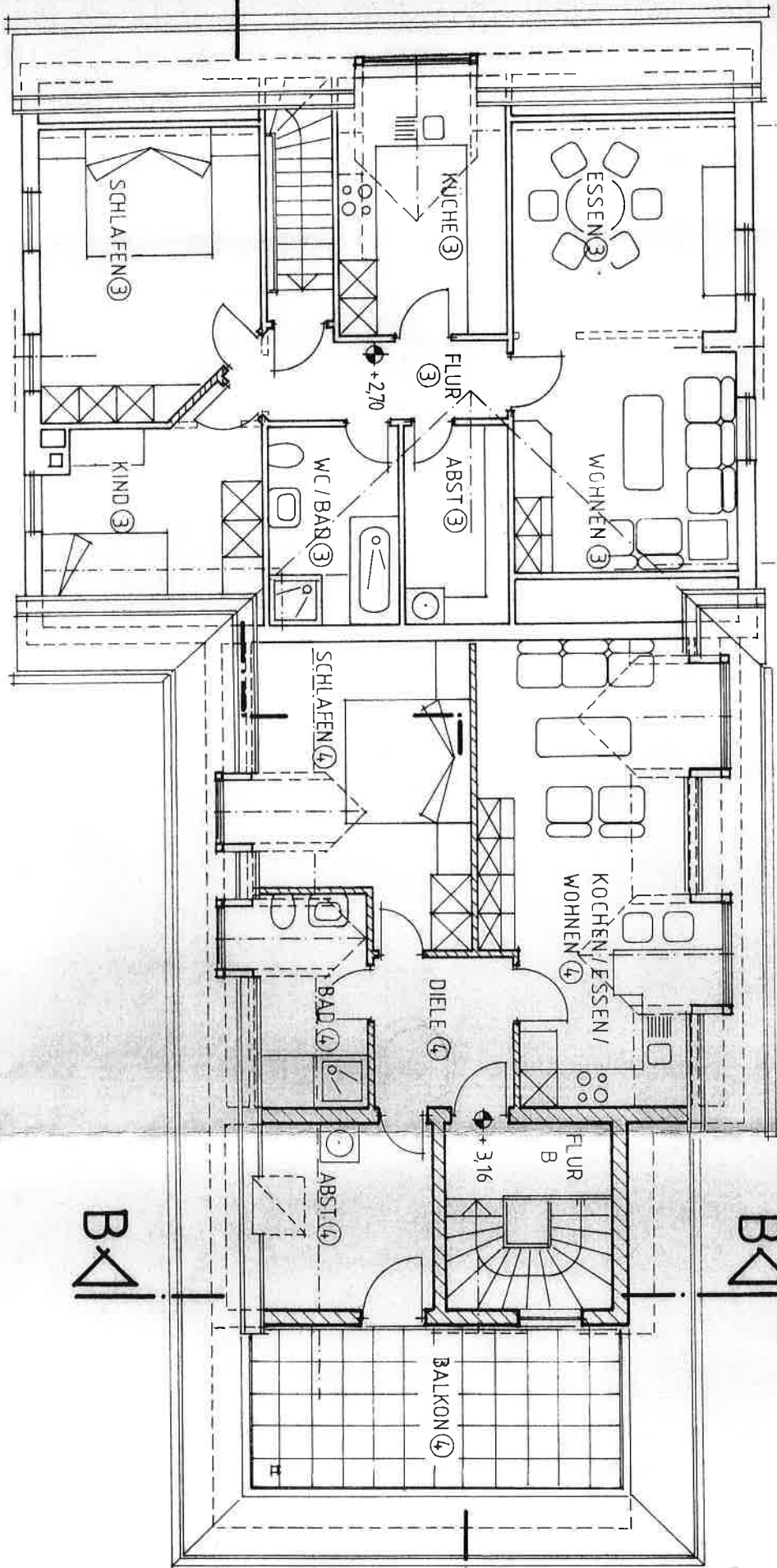
3,30 3,18

7,80



30	2,55	1,01	1,01	1,49	1,01	74	1,81
45	3,51	1,15	1,26	3,485	45	30	
75	1,935	1,15	2,26	2,685	75	30	
30	3,385	24	2,635	24	1,81	30	
8,61							2,80





1.10	3.33	12	1.25	12	2.36	1.10	25	2.00	1.75	1.15	2.00	1.80	30
2.93	95	1.615	95	2.935	1.10	2.00	1.26	1.75	2.00	1.26	1.80	1.80	30
1.25	1.25	1.25	1.25	1.25	1.25	1.26	1.26	1.26	1.26	1.26	1.26	1.26	1.26
9,38													
7,80													
3,30													
3,18													

2.55	1.01	1.49	1.01	74	1.81
2.195	1.26				

