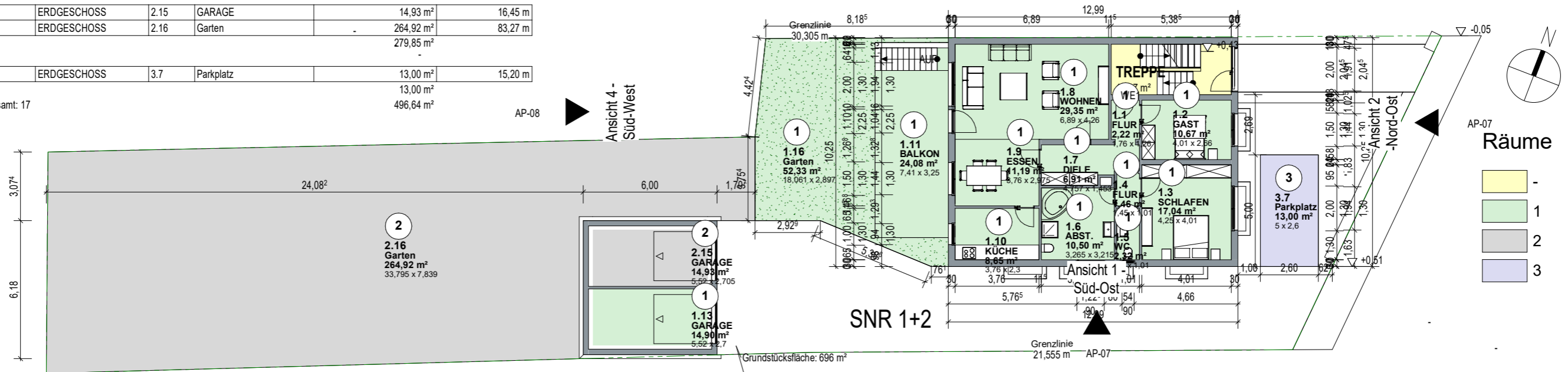


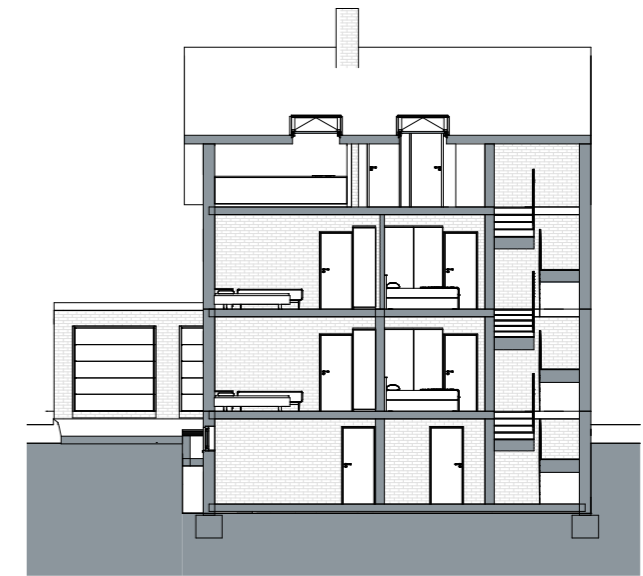
## RÄUME - EG

Abteilung	Ebene	Nr	Name	Brutto	Umfang
-	ERDGESCHOSS	EG.	TREPPE	12,17 m <sup>2</sup>	15,29 m
-				12,17 m <sup>2</sup>	
1	ERDGESCHOSS	1.1	FLUR	2,22 m <sup>2</sup>	6,04 m
1	ERDGESCHOSS	1.2	GAST	10,67 m <sup>2</sup>	13,34 m
1	ERDGESCHOSS	1.3	SCHLAFEN	17,04 m <sup>2</sup>	16,52 m
1	ERDGESCHOSS	1.4	FLUR	1,46 m <sup>2</sup>	4,92 m
1	ERDGESCHOSS	1.5	WC	2,32 m <sup>2</sup>	6,62 m
1	ERDGESCHOSS	1.6	ABST.	10,50 m <sup>2</sup>	12,96 m
1	ERDGESCHOSS	1.7	DIELE	6,91 m <sup>2</sup>	12,42 m
1	ERDGESCHOSS	1.8	WOHNEN	29,35 m <sup>2</sup>	22,30 m
1	ERDGESCHOSS	1.9	ESSEN	11,19 m <sup>2</sup>	13,47 m
1	ERDGESCHOSS	1.10	KÜCHE	8,65 m <sup>2</sup>	12,12 m
1	ERDGESCHOSS	1.11	BALKON	24,08 m <sup>2</sup>	21,32 m
1	ERDGESCHOSS	1.13	GARAGE	14,90 m <sup>2</sup>	16,44 m
1	ERDGESCHOSS	1.16	Garten	52,33 m <sup>2</sup>	41,92 m
1				191,62 m <sup>2</sup>	
2	ERDGESCHOSS	2.15	GARAGE	14,93 m <sup>2</sup>	16,45 m
2	ERDGESCHOSS	2.16	Garten	264,92 m <sup>2</sup>	83,27 m
2				279,85 m <sup>2</sup>	
3	ERDGESCHOSS	3.7	Parkplatz	13,00 m <sup>2</sup>	15,20 m
3				13,00 m <sup>2</sup>	
Gesamt: 17				496,64 m <sup>2</sup>	



## Schnitt 2

M 1 : 200

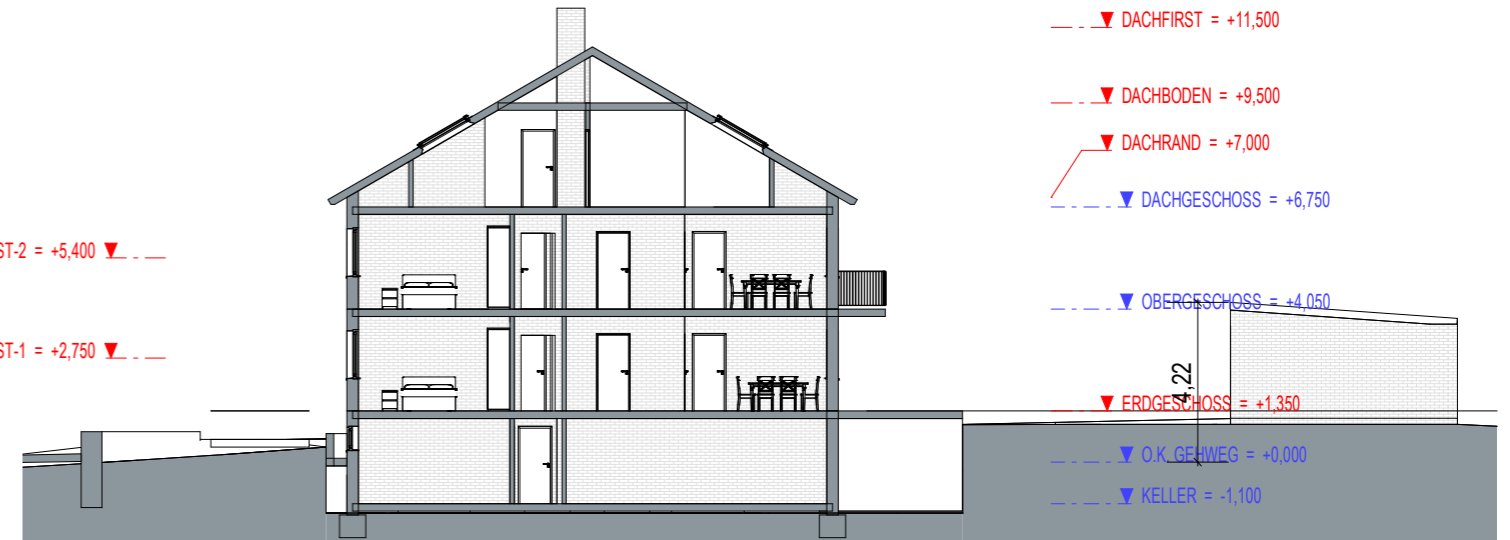


- DACHFIRST = +11,500
- DACHBODEN = +9,500
- DACHRAND = +7,000
- DACHGESCHOSS = +6,750
- OBERGESCHOSS = +4,050
- ERDGESCHOSS = +1,350
- O.K. GEHWEG = +0,000
- KELLER = -1,100

- BODEST-2 = +5,400
- BODEST-1 = +2,750

## Schnitt 1

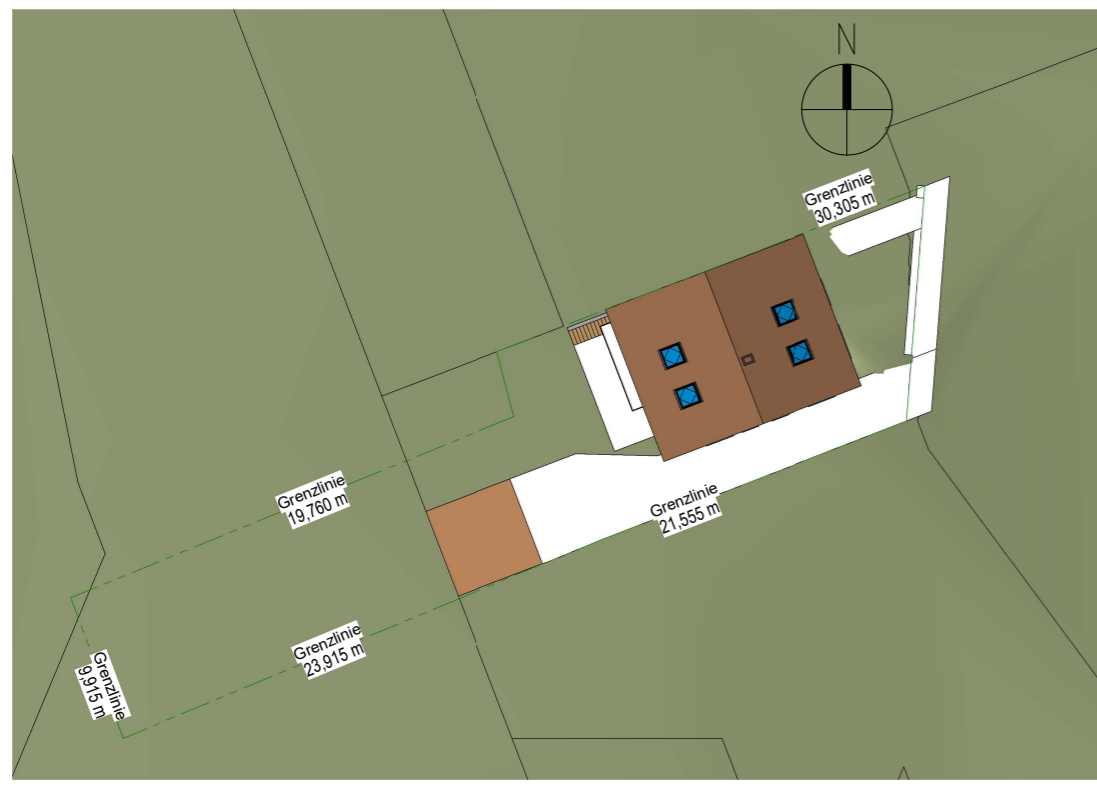
M 1 : 200



- DACHFIRST = +11,500
- DACHBODEN = +9,500
- DACHRAND = +7,000
- DACHGESCHOSS = +6,750
- OBERGESCHOSS = +4,050
- ERDGESCHOSS = +1,350
- O.K. GEHWEG = +0,000
- KELLER = -1,100

## Lageplan

M 1 : 500



0,420 x 0,297 = 0,12 m<sup>2</sup>