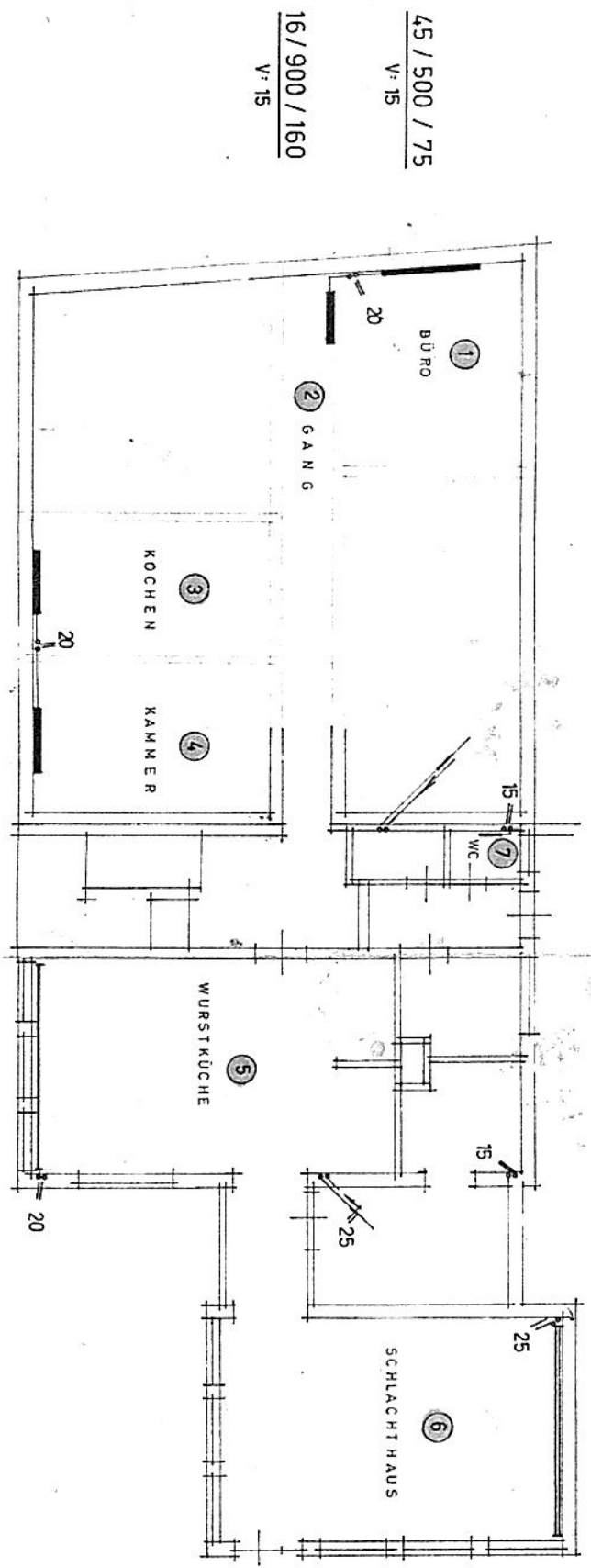


GRUPPE: NEUBAU LOEWE - PUMPE V 344 R,

1 FLEXCON - 80/1,

0,5 m PL.NA. 500 - I
V: 10

4,5 m PL.NA. 1000 - II
V: 25



45 / 500 / 75
V: 15

16 / 900 / 160
V: 15

32 / 500 / 75
V: 15

32 / 500 / 75
V: 15

4,5 m PL.NA. 750 - I
V: 20

EG.

