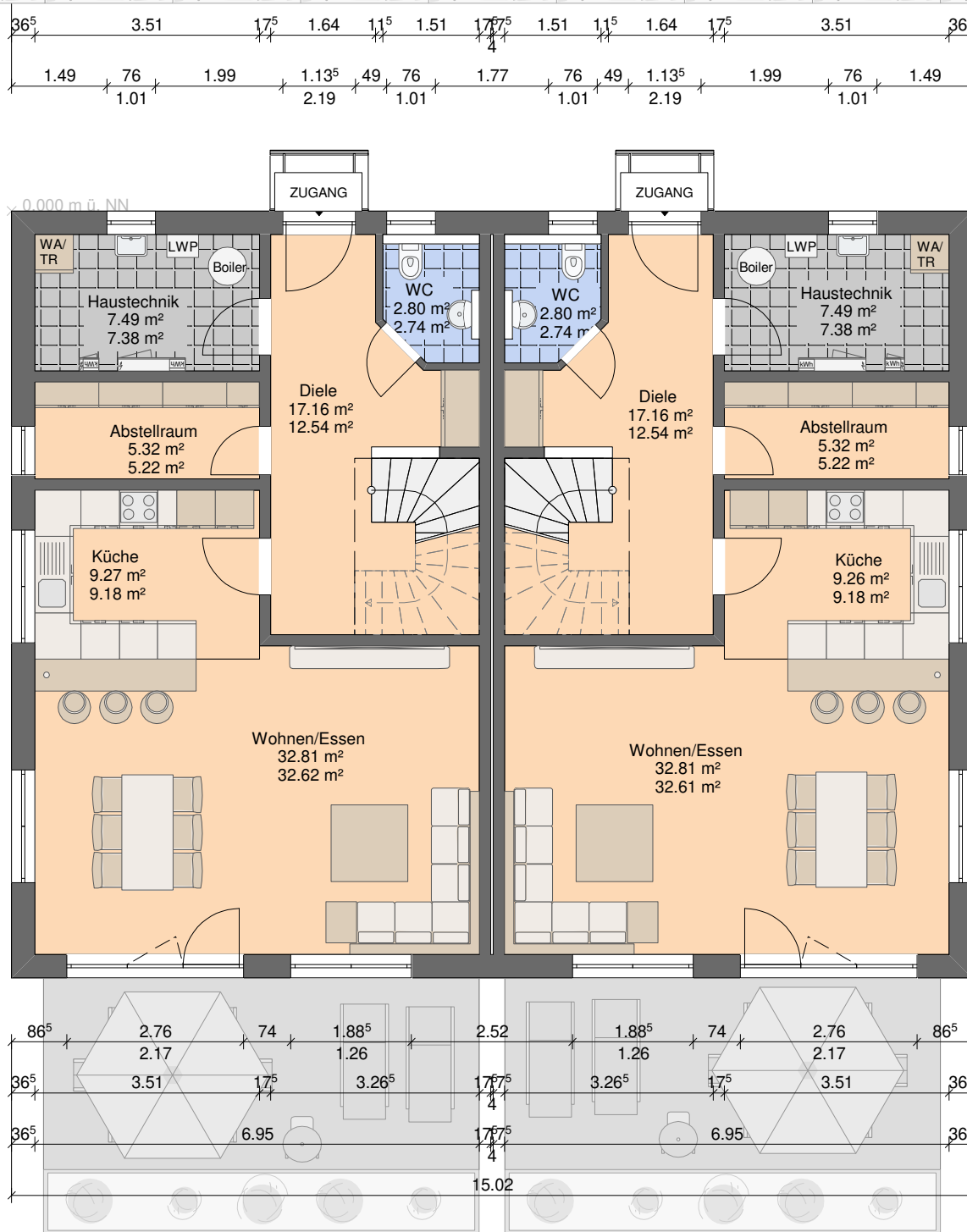


L/B = 11.99 / 7.49 m: Wohnfläche = je DHH 129.50 m<sup>2</sup> (ohne Haustechnik); DN = 22°; Kniestock H = 2 m

Entwurf Nr.3 - M 1:100 - Gez. Hechtel N. - Datum 27.09.2024

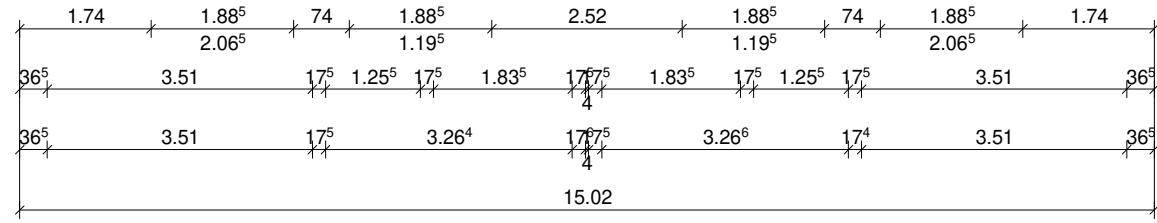
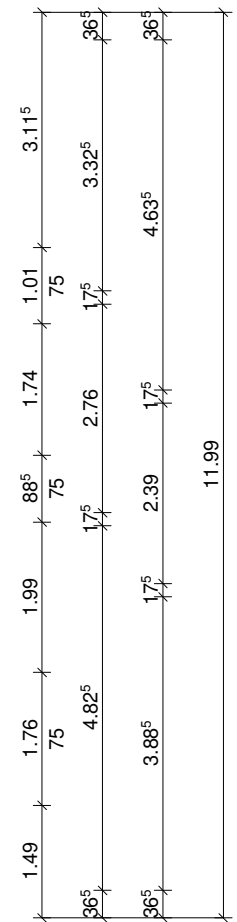
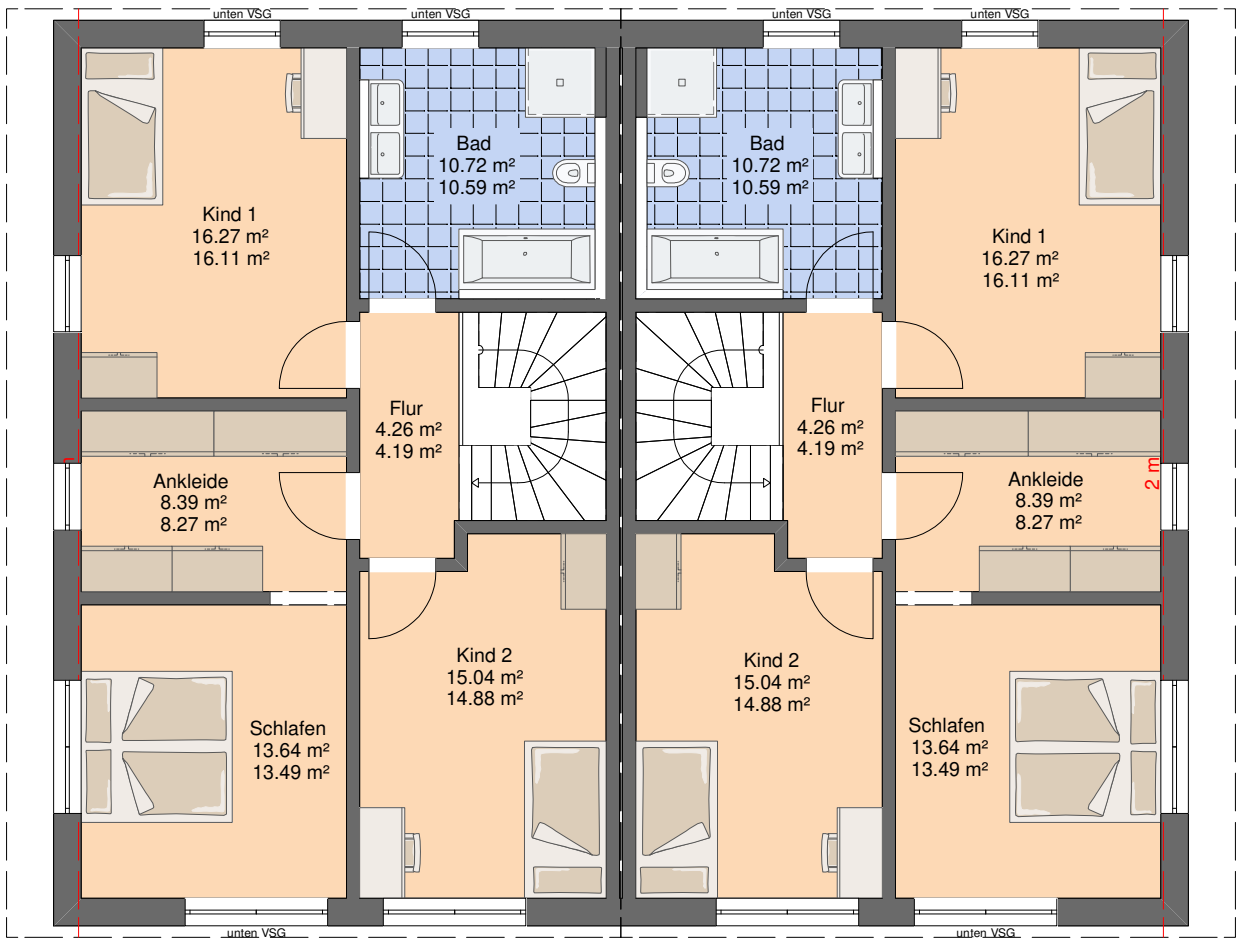
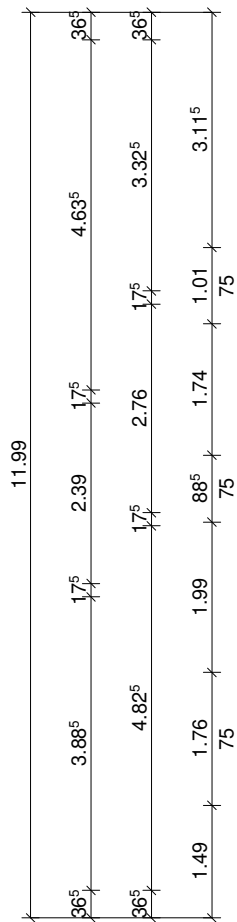
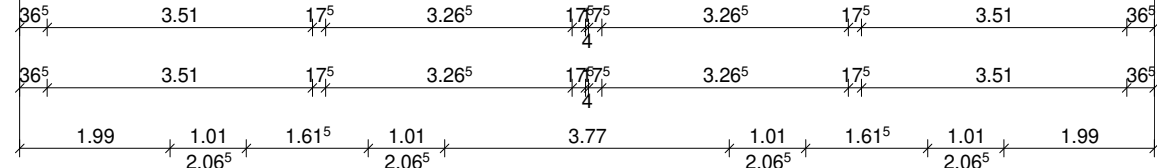
**DHH 1+3**  
**62.00 m<sup>2</sup>**  
**(ohne Haustechnik.)**



**Erdgeschoss**

**DHH 2+4**  
**62.00 m<sup>2</sup>**  
**(ohne Haustechnik.)**

Entwurf Nr.3 - M 1:100 - Gez. Hechtel N. - Datum 27.09.2024  
 LB = 11.99 / 7.49 m; Wohnfläche = je DHH 129.50 m<sup>2</sup> (ohne Haustechn.); DN = 22°; Kniesock H = 2 m



**DHH 1+3**  
**67.50 m<sup>2</sup>**  
**(ohne Haustechn.)**

**Obergeschoss**

**DHH 2+4**  
**67.50 m<sup>2</sup>**  
**(ohne Haustechn.)**