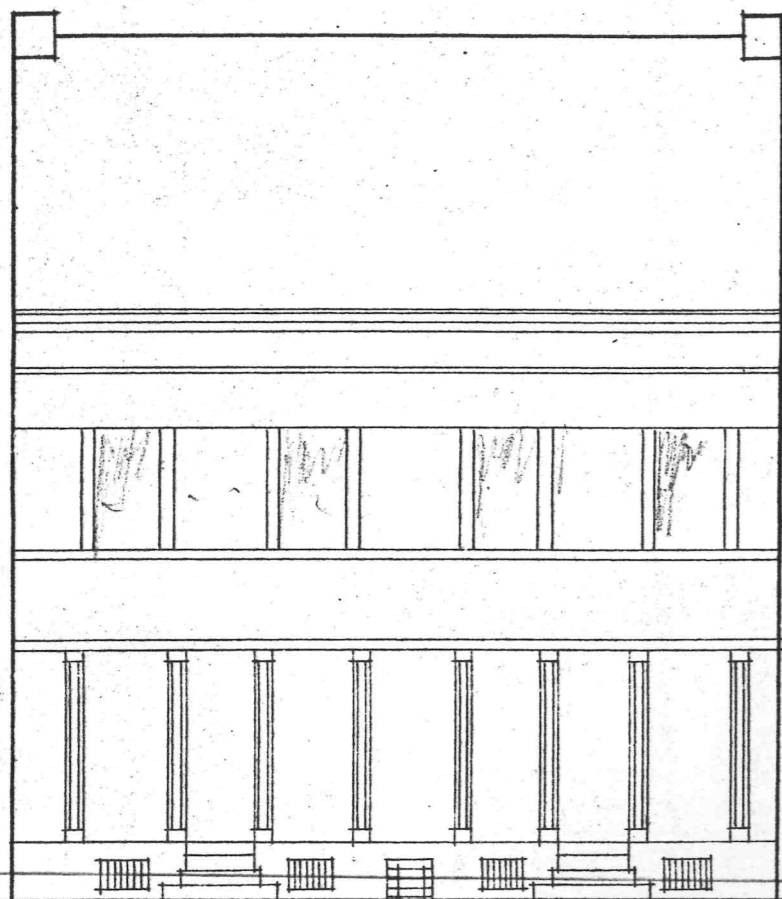


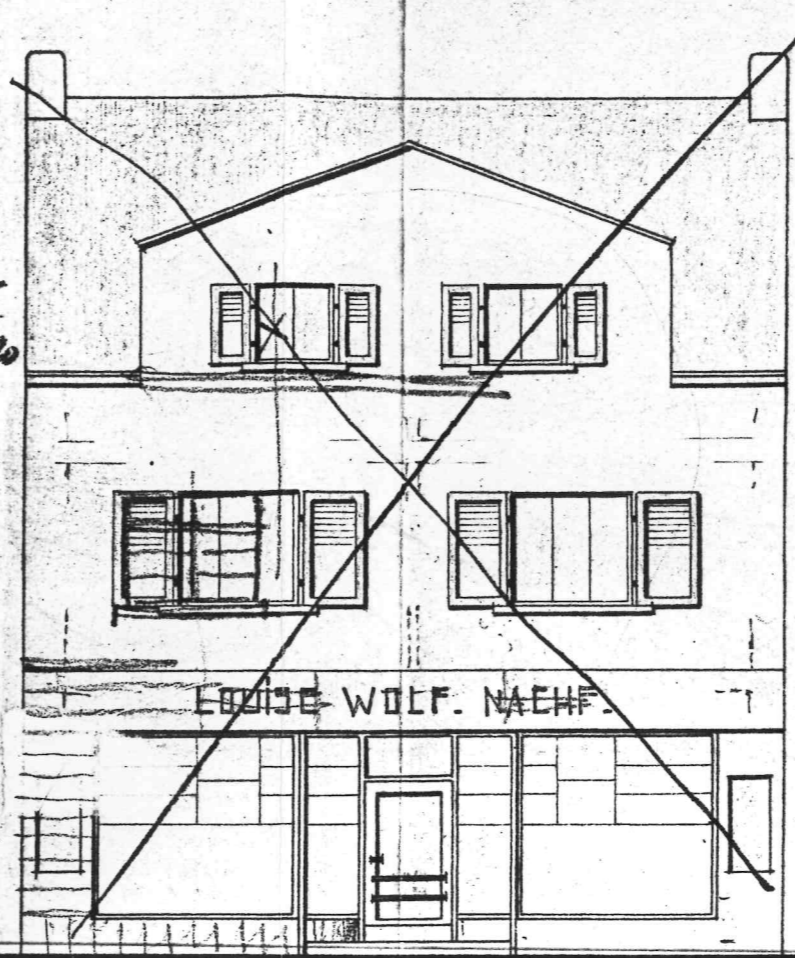
BAUZEICHNUNG ZU EINEM GESCHÄFT



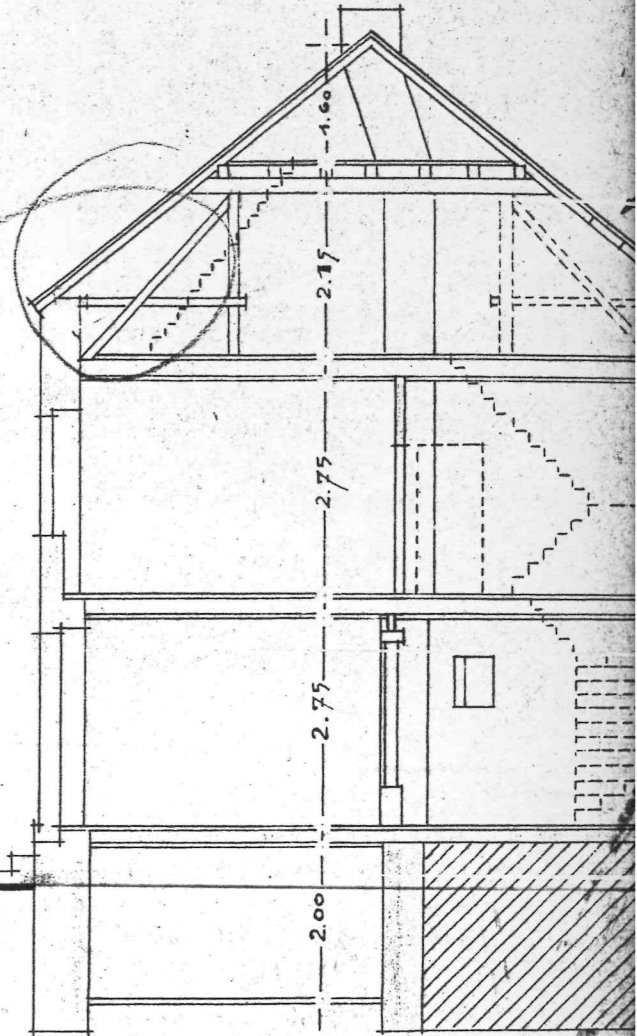
ANSICHT.



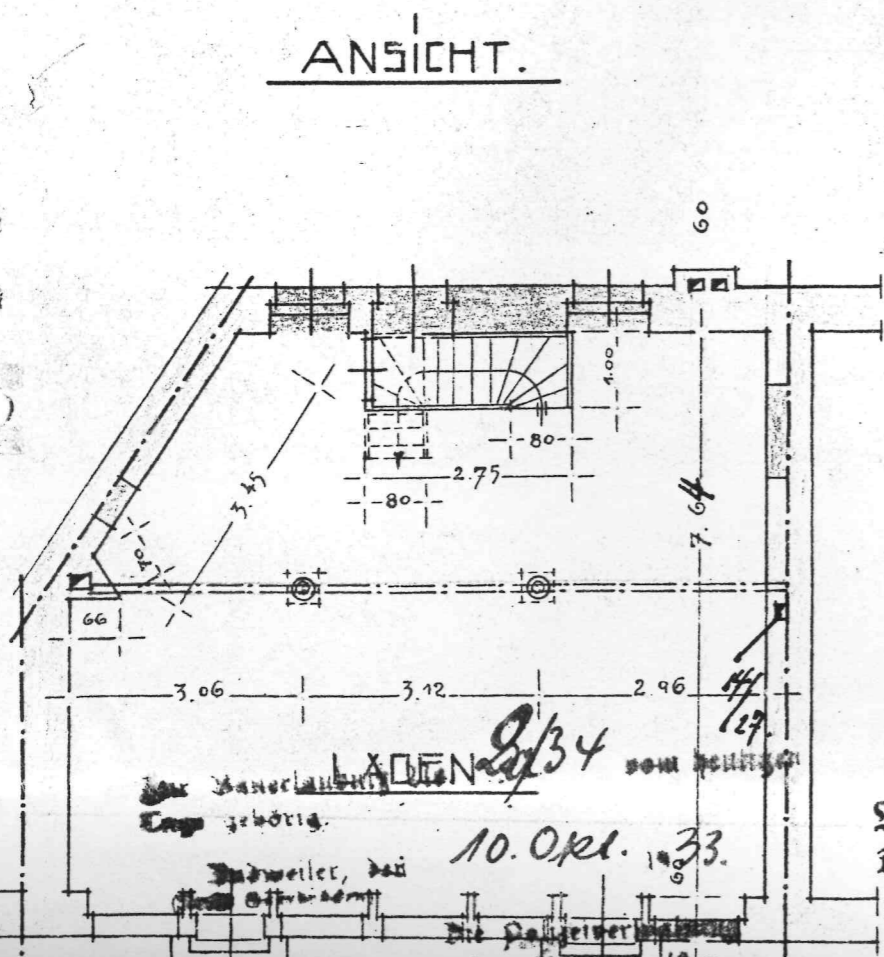
1.35 / 1.35



LOUISE WOLF. NACHF.



QUERSCHNITT.

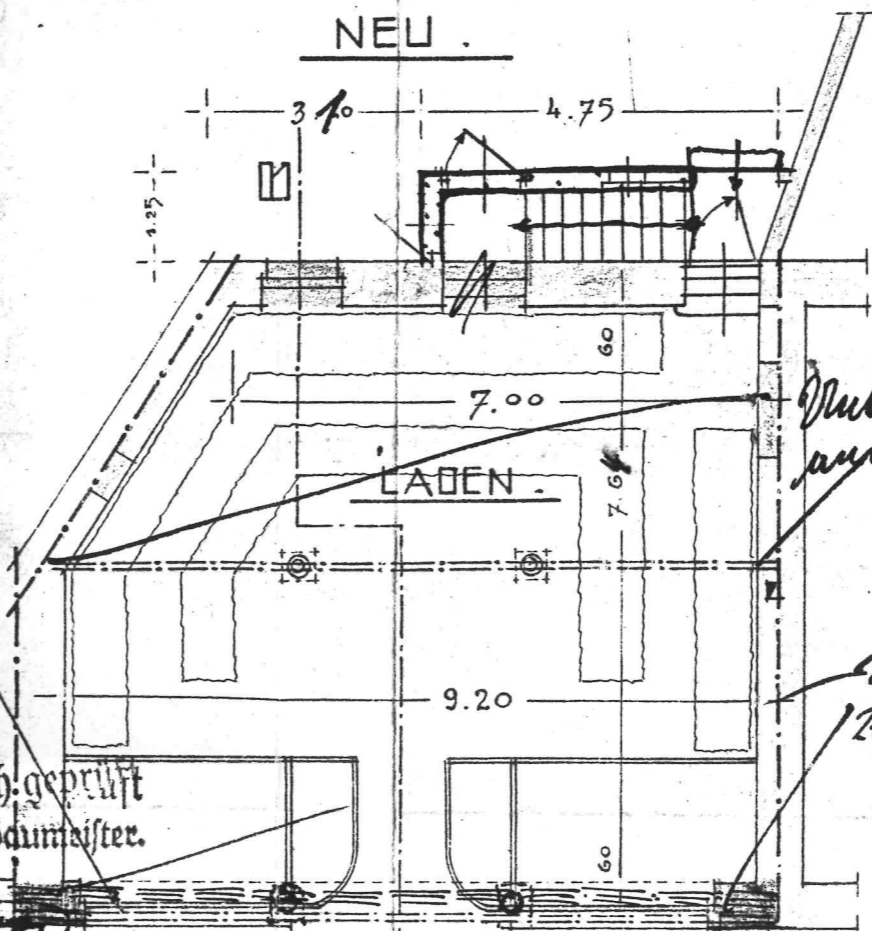


LADEN

10. Okt. 1933

5. N. 18
HAUPTTRÄGER NR. 24

Baupolizeilich geprüft
Der Gemeindebauamtsleiter.

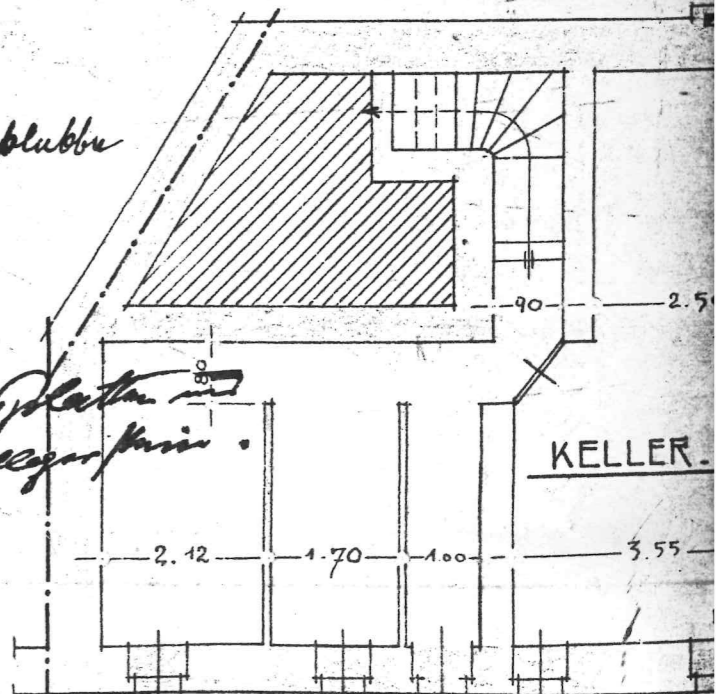


NEU.

LADEN

*Überlag platte
ausstrichen*

*an bilag platte
Betonanfertigung*



KELLER.