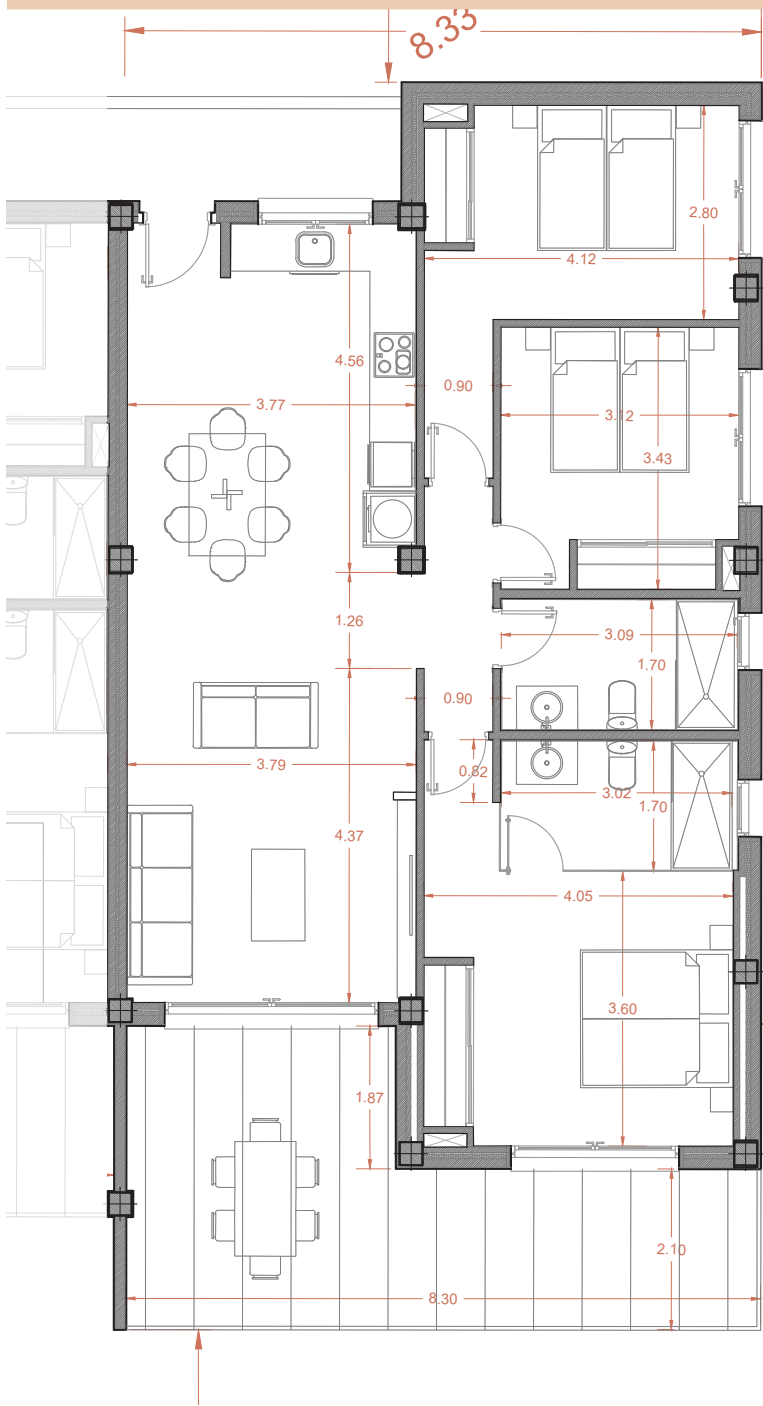


# HOUSE N.16 (TYPE A) 1ST FLOOR - BLOCK 1

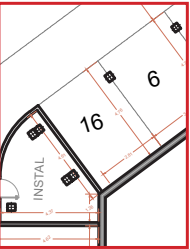


## 1ST FLOOR

TYPE A



1 X BASEMENT PARKING



THE IMAGES REFER TO APPROXIMATE SOLUTIONS AND ARE NOT BINDING WITH THE FINAL PROJECT

## BUILT SURFACE

129 M2

LIVING ROOM KITCHEN	38,40 M2
BEDROOM 1	16,25 M2
BEDROOM 2	13,20 M2
BEDROOM 3	10,50 M2
BATHROOM 1	5,15 M2
BATHROOM 2	5,25 M2
CORRIDOR	3,00 M2
COVERED TERRACE 50%	12,00 M2
TOTAL USABLE SURFACE	103,75 M2

