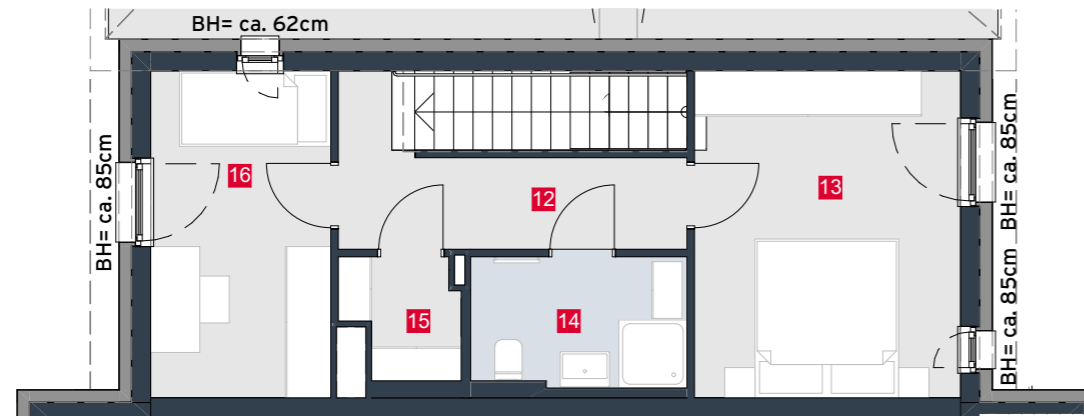


HAUS 04 TOP 06

Wohnfläche	129,98m ²
Terrasse	10,50m ²
Garten	24,47m ²

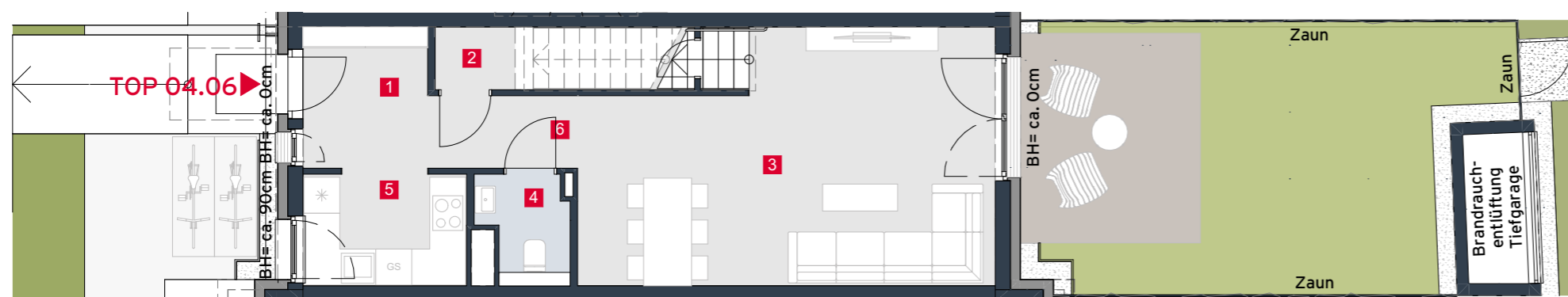
EG	1	Vorraum	5,16m ²
	2	AR	4,22m ²
	3	Wohnzimmer	26,69m ²
	4	WC	2,15m ²
	5	Küche	5,46m ²
	6	Gang	2,90m ²
OG1	7	Gang	9,07m ²
	8	Zimmer	14,03m ²
	9	Bad	5,59m ²
	10	WC	2,30m ²
DG	11	Zimmer	12,78m ²
	12	Gang	6,70m ²
	13	Zimmer	15,05m ²
	14	AR	2,98m ²
	15	Bad	4,39m ²
	16	Zimmer	10,51m ²



2. Obergeschoss



1. Obergeschoss



Erdgeschoss

