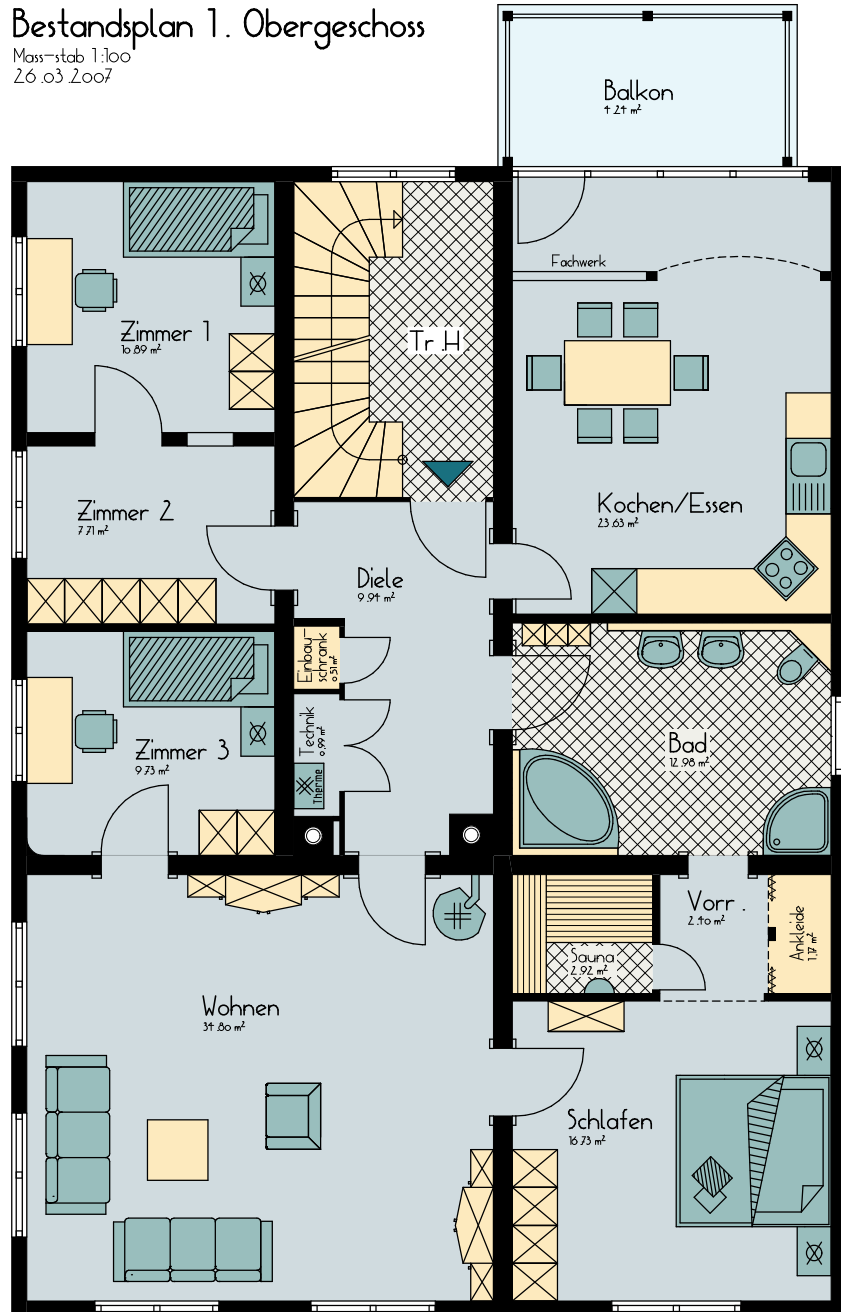
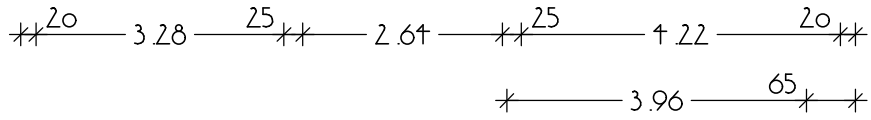


# Bestandsplan 1. Obergeschoss

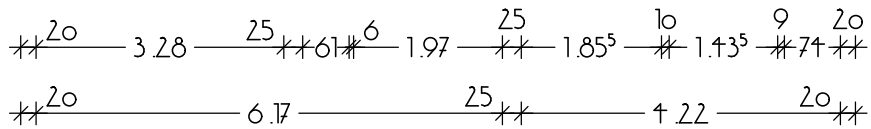
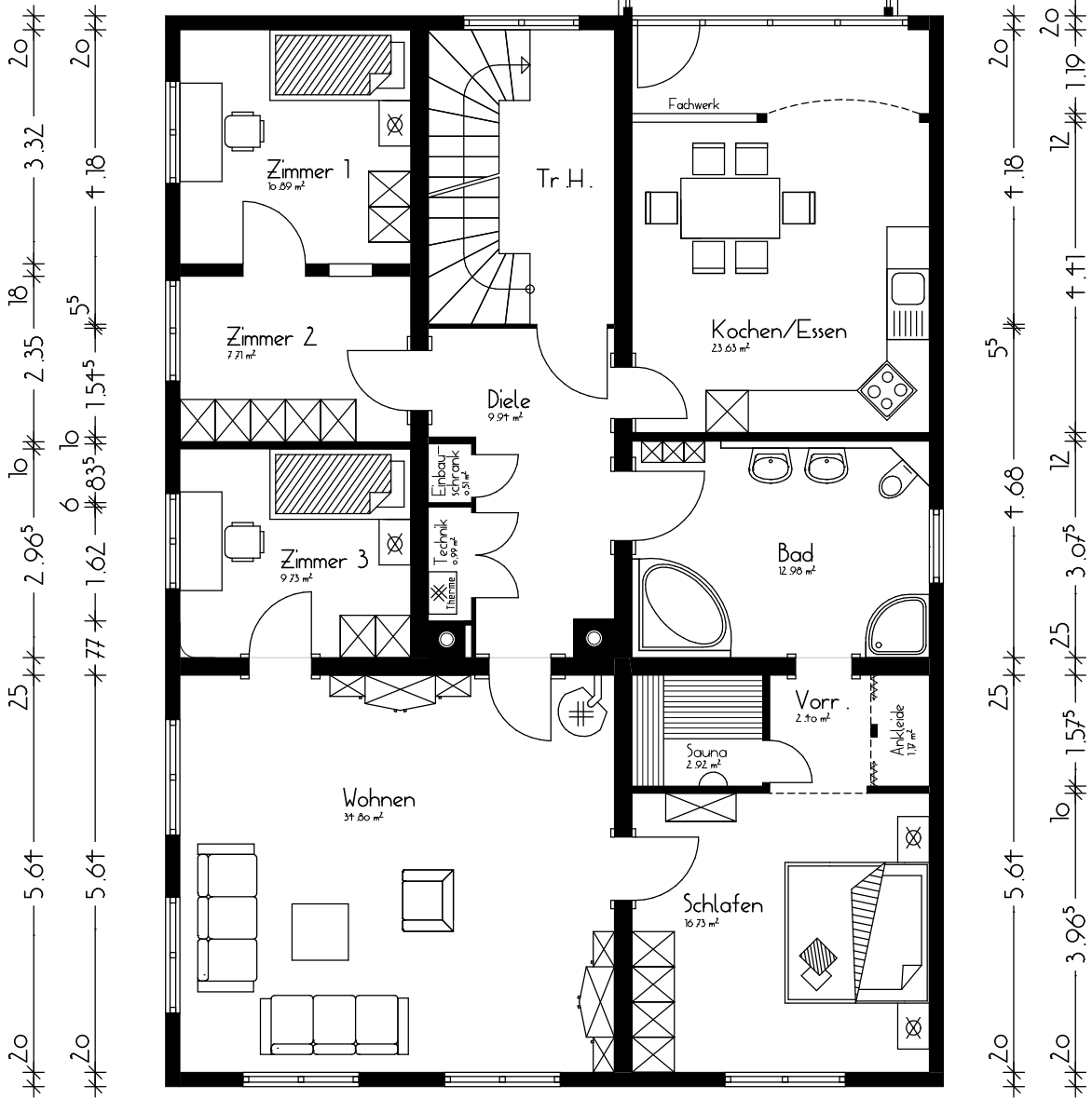
Massstab 1:100  
26.03.2007





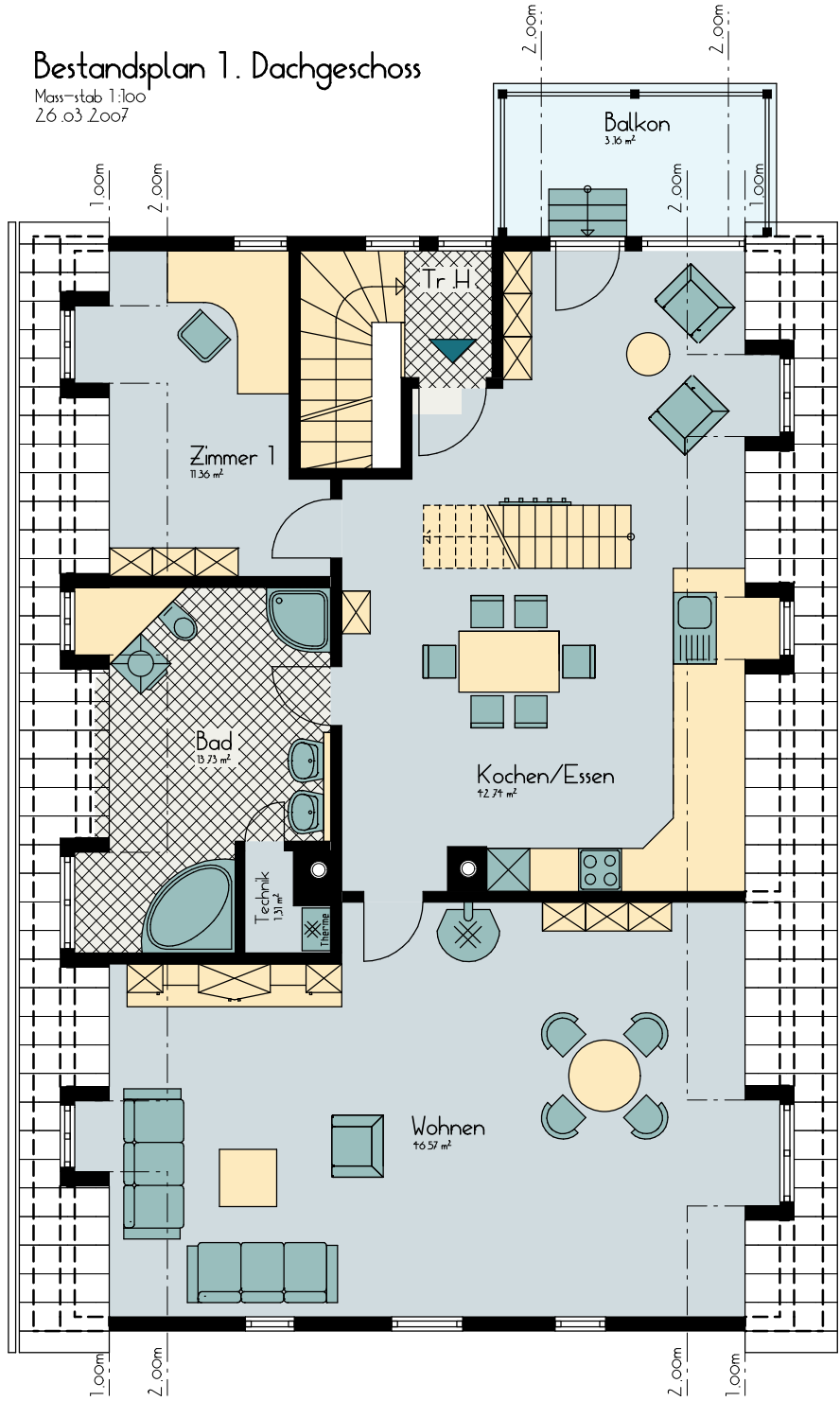
### Bestandsplan 1. Obergeschoss

Massstab 1:100  
26.03.2007



# Bestandsplan 1. Dachgeschoss

Massstab 1:100  
26.03.2007

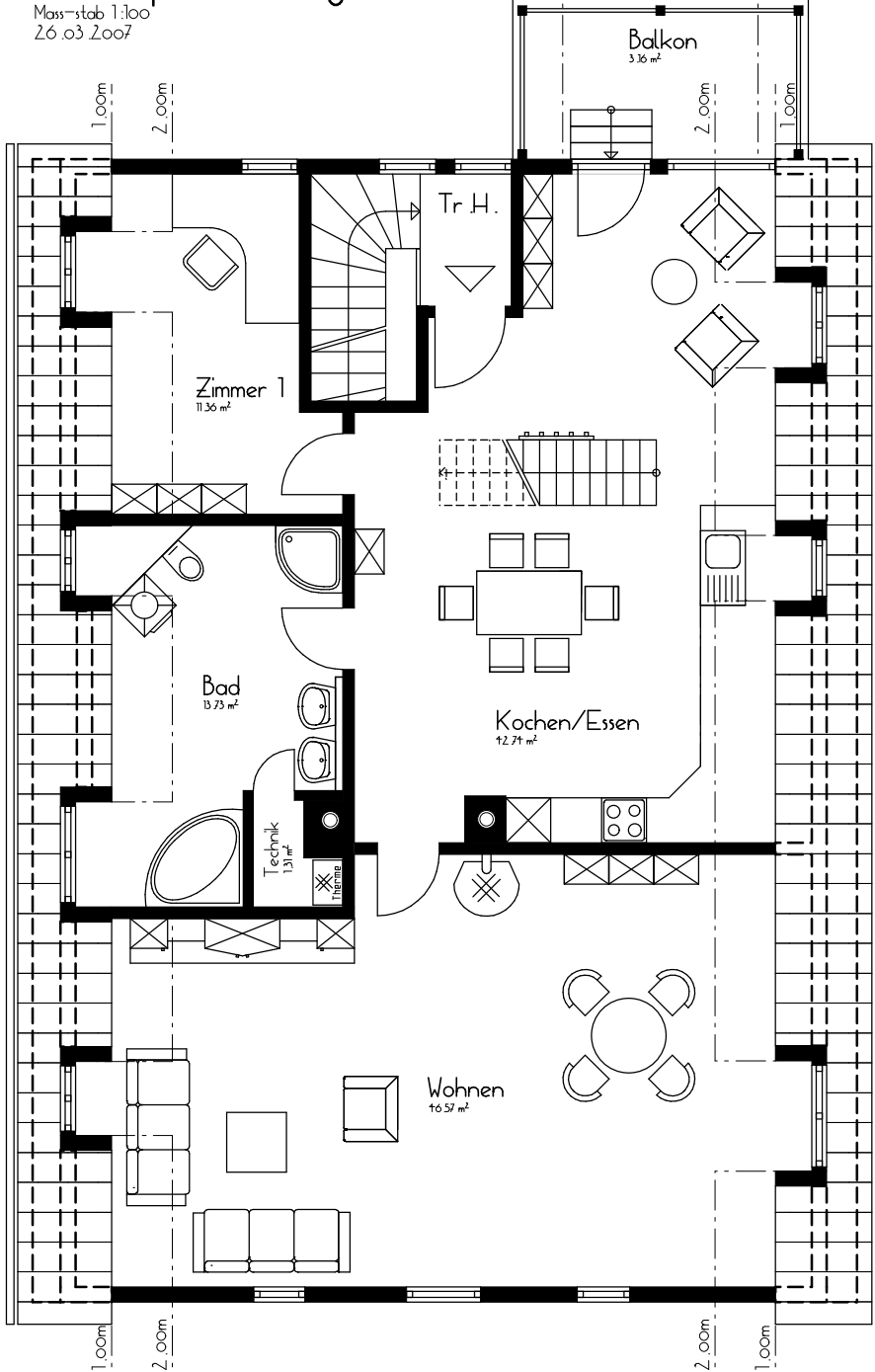


$20$  —  $2.03$  —  $1.99$  —  $1.91^5$  —  $1.40^5$  —  $2.76$  —  $0.94$  —  $1.55$  —  $2.70^5$  —  $1.08$  —  $0.77$  —  $20$   
 $20$  —  $4.93^5$  —  $5.10^5$  —  $4.55^5$  —  $20$   
 $20$  —  $4.93^5$  —  $1.42^5$  —  $1.36$  —  $1.55$  —  $3.04$  —  $20$

$20$  —  $3.00$  —  $1.55$  —  $2.68$  —  $1.55$  —  $3.87$  —  $20$   
 $20$  —  $3.00$  —  $1.55$  —  $1.41$  —  $1.55$  —  $5.11$  —  $20$   
 $20$  —  $3.58$  —  $1.55$  —  $1.14^5$  —  $2.90$  —  $2.08$  —  $20$   
 $3.96$  —  $24^5$   
 $20$  —  $81$  —  $7.27$  —  $81$  —  $20$   
 $48^5$

### Bestandsplan 1. Dachgeschoss

Massstab 1:100  
 26.03.2007



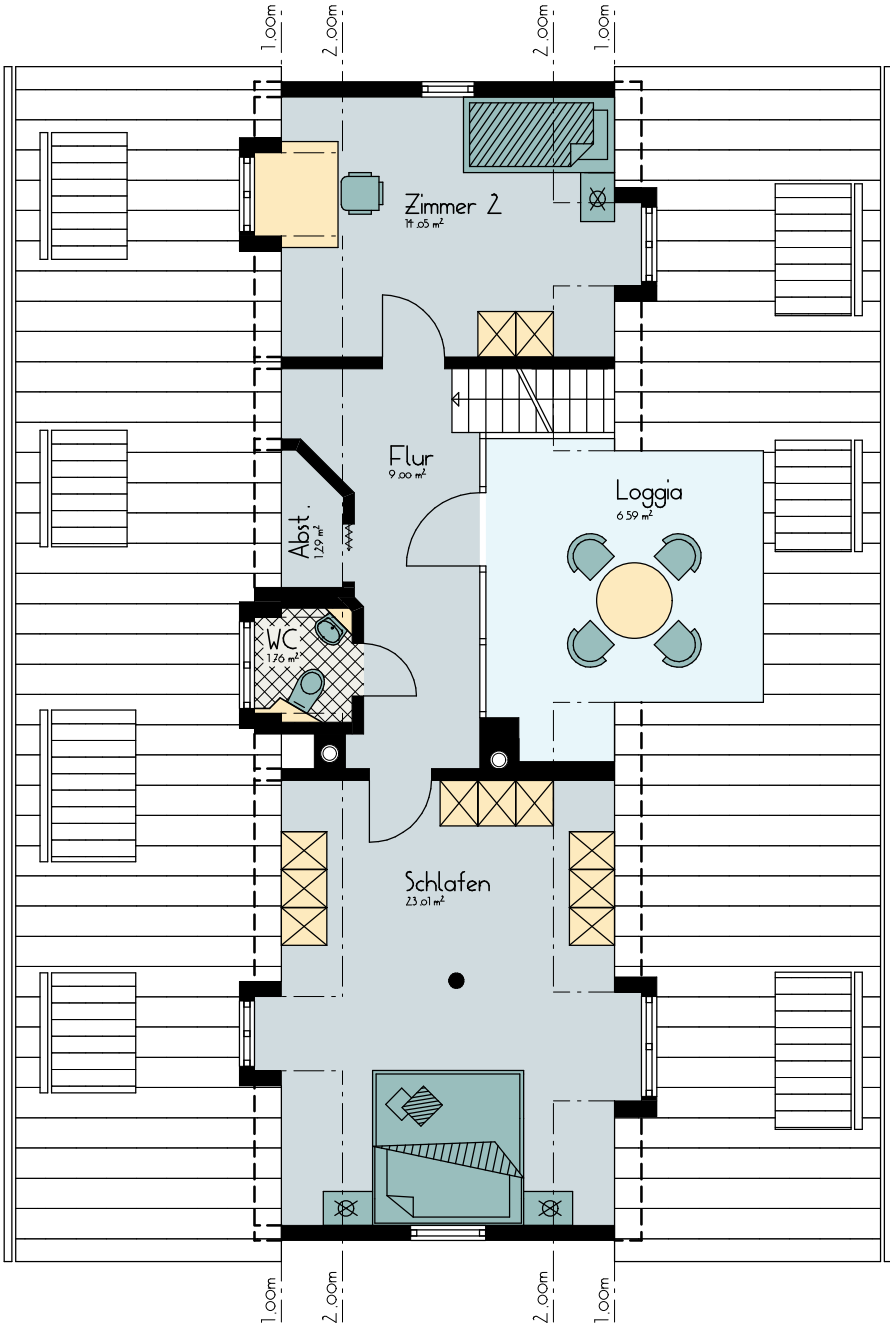
$15^5$  —  $5.76$  —  $3.04$  —  $20$   
 $15^5$  —  $4.51^5$  —  $1.63^5$  —  $1.77$  —  $20$   
 $15^5$  —  $8.95^5$  —  $20$   
 $15^5$  —  $3.24$  —  $2.24^5$  —  $1.14^5$  —  $1.45$  —  $2.14$  —  $20$   
 $20$  —  $1.55$  —  $1.48$  —  $2.76^5$  —  $3.24$  —  $87^5$  —  $2.24^5$  —  $1.14^5$  —  $1.45$  —  $2.14$  —  $20$

$20$  —  $3.36$  —  $1.55$  —  $6.12^5$  —  $20$   
 $20$  —  $2.24^5$  —  $1.20$  —  $1.55$  —  $6.12^5$  —  $20$   
 $20$  —  $9.86$  —  $20$

# Bestandsplan Dachspitz

Massstab 1:100

26.03.2007

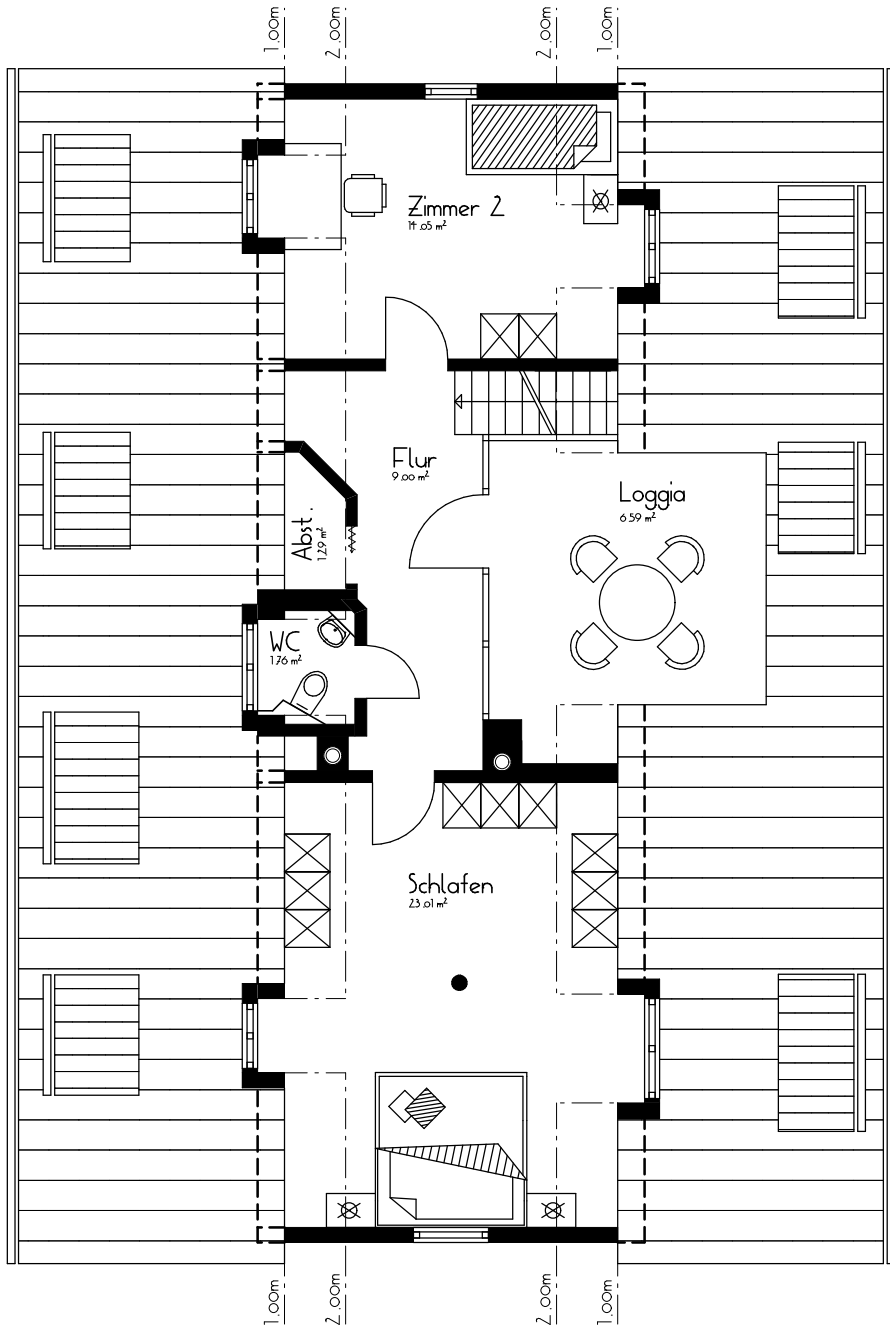


14<sup>5</sup>  
 \* 1.17<sup>5</sup> \* 1.66 \* 3.67 \*  
 \* 5.12 \*

# Bestandsplan Dachspitz

Massstab 1:100  
 26.03.2007

20  
 \* 2.04<sup>5</sup> \* 98 \* 2.86 \* 15<sup>5</sup> \* 11<sup>5</sup> 27<sup>5</sup> \* 14<sup>5</sup> \* 15<sup>5</sup> \* 20  
 \* 5.88<sup>5</sup> \* 1.27 \* 1.82 \* 93 \* 1.60 \* 1.10 \* 74 \*  
 \* 20 \* 15<sup>5</sup> \* 27<sup>5</sup> \* 14<sup>5</sup> \* 15<sup>5</sup> \* 20 \*  
 \* 5.88<sup>5</sup> \* 1.50<sup>5</sup> \* 1.82 \* 93 \* 3.44 \*  
 \* 20 \* 16 \* 15<sup>5</sup> \* 5.29 \* 3.44 \* 20 \*  
 \* 5.88<sup>5</sup> \* 15<sup>5</sup> \* 3.44 \* 20 \*



20  
 \* 5.88<sup>5</sup> \* 25 \* 4.27 \* 8 \* 84<sup>5</sup> \* 15<sup>5</sup> \* 3.44 \* 20 \*  
 \* 1.64<sup>5</sup> \* 1.14 \* 2.80 \* 25 \* 78 \* 3.33 \* 16 \* 84<sup>5</sup> \* 94 \* 1.10 \* 1.10 \* 20 \*  
 \* 8 \* 1.40 \*

15<sup>5</sup>  
 \* 1.29 \* 1.53<sup>5</sup> \* 3.67 \*  
 \* 5.12 \*