

15.61⁵

8.37⁵

7.24

36⁵
2.51

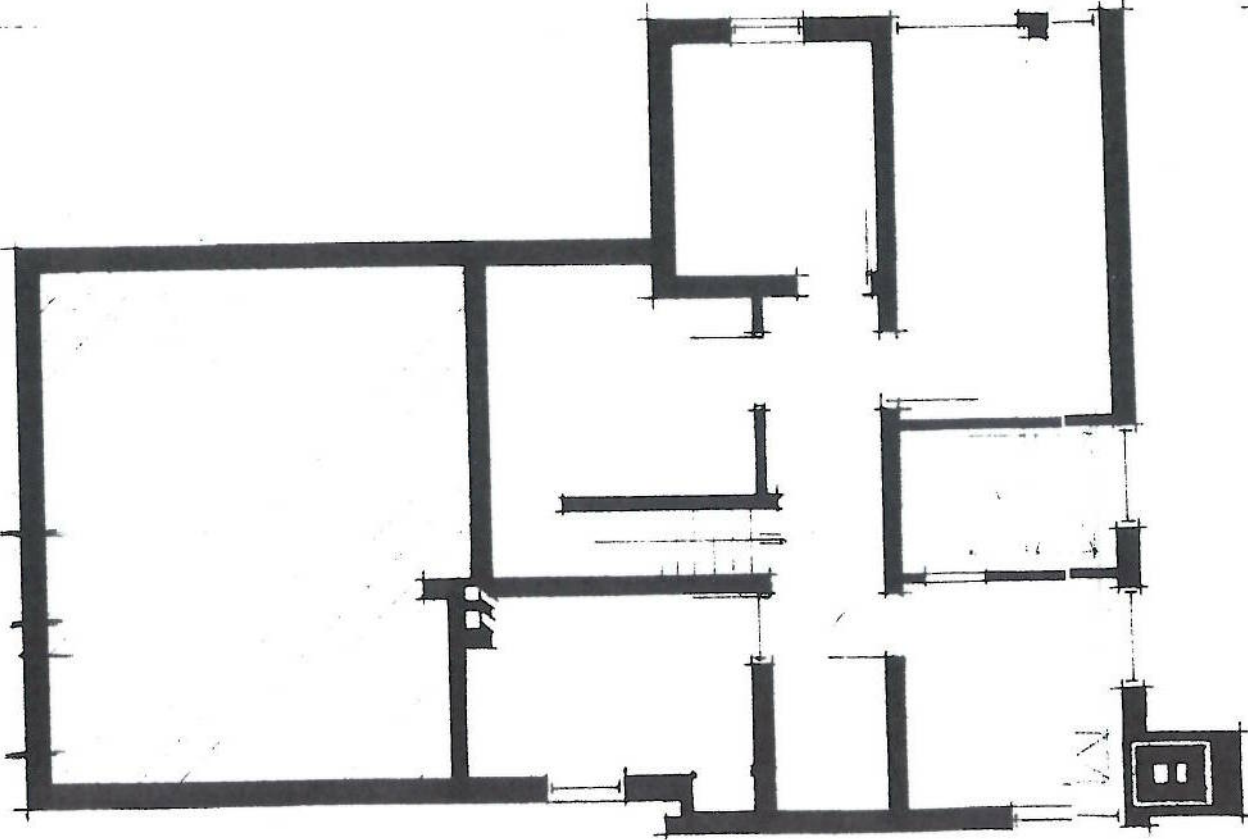
36⁵

24

24

3.76

36⁵



36⁵

5.01

11.5

1.005

11.5

3.6

KELLER.

36⁵

5.26

24

2.51

36⁵

0.76

24

1.51

24

3.76

36⁵

8.37⁵

7.24

15.61⁵