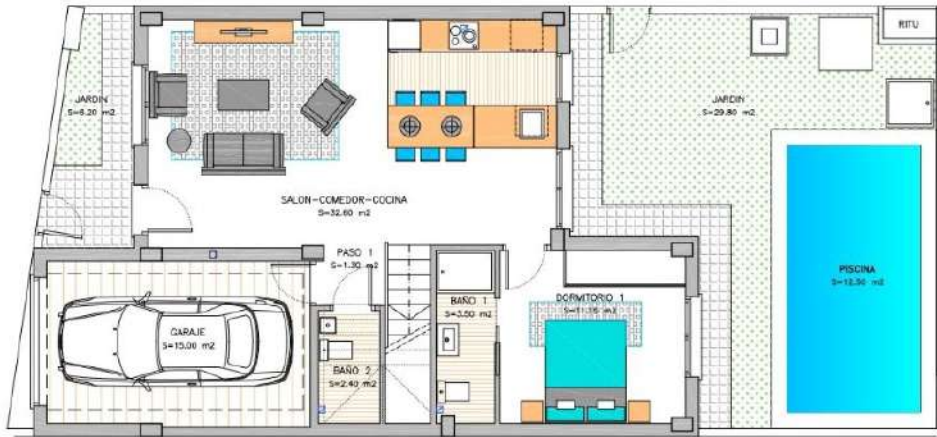
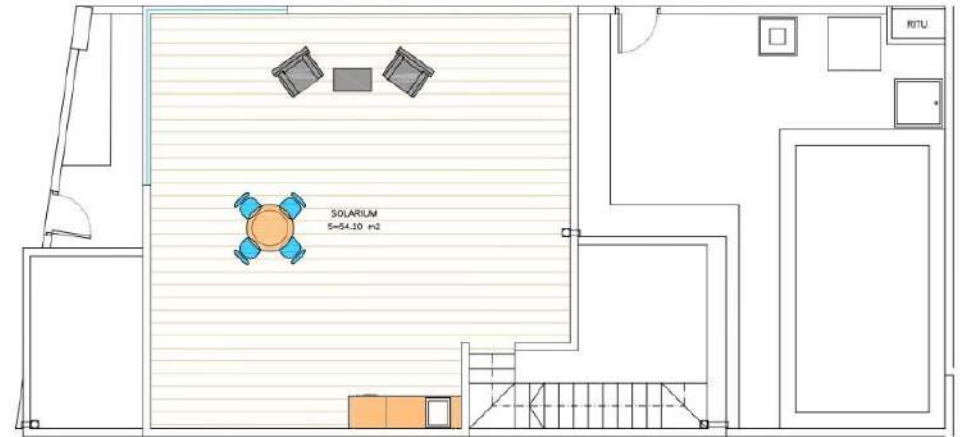


Vivienda 1



Planta Baja

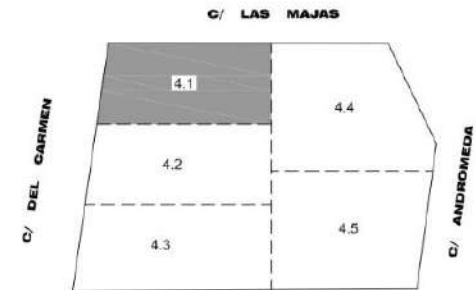


Planta Solarium



Planta Primera

		SUPERFICIE CONSTRUIDA
VIVIENDA 4.1	PLANTA BAJA	55.50 m ²
	PLANTA PRIMERA	54.20 m ²
	TOTAL VIVIENDA	109.70 m ²
	CARAJE	18.30 m ²



PARCELA 4.1: 135,60 m²